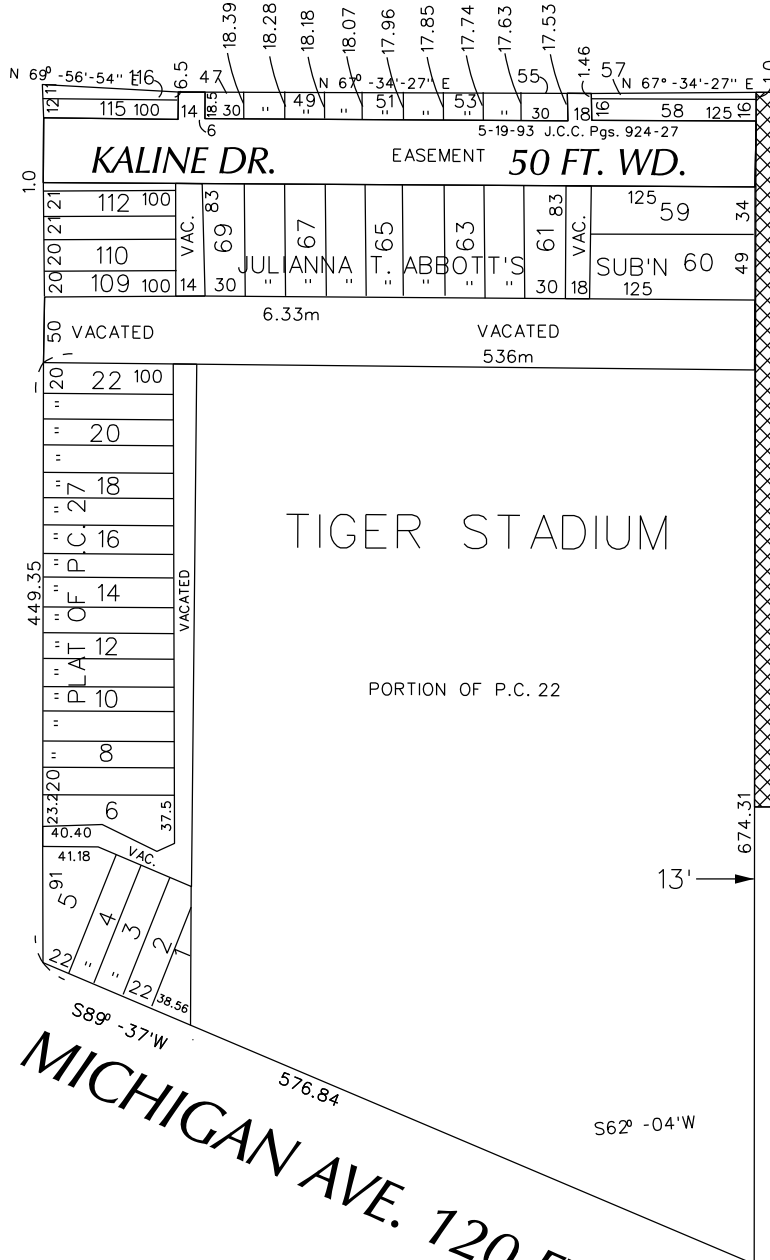


PETITION NO. 1812  
 LARSON REALTY  
 C/O GIFFELS WEBSTER  
 28 W. ADAMS, SUITE 1200  
 DETROIT, MICHIGAN 48226  
 C/O MATT WOJCIECHOWSKI  
 PHONE NO. 313 962-4442



FISHER FREEWAY  
 W. FISHER FWY. SERVICE DR.

COCHRANE AVE. 65 FT. WD.



TRUMBULL AVE. 100 FT. WD.

MICHIGAN AVE. 120 FT. WD.



- OUTRIGHT VACATION

(FOR OFFICE USE ONLY)

CARTO 29 D

REQUEST TO OUTRIGHT VACATE  
 A PORTION OF TRUMBULL AVE. 100 FT. WD.  
 IN THE AREA BOUND BY  
 COCHRANE, TRUMBULL, MICHIGAN AVE.  
 AND W. FISHER FWY. SERVICE DR.

CITY OF DETROIT	
CITY ENGINEERING DEPARTMENT	
SURVEY BUREAU	
JOB NO.	01-01
DRWG. NO.	X 1812

B					
A					
DESCRIPTION		DRWN	CHKD	APPD	DATE
REVISIONS					
DRAWN BY	WLW	CHECKED			
DATE	01-26-18	APPROVED			