

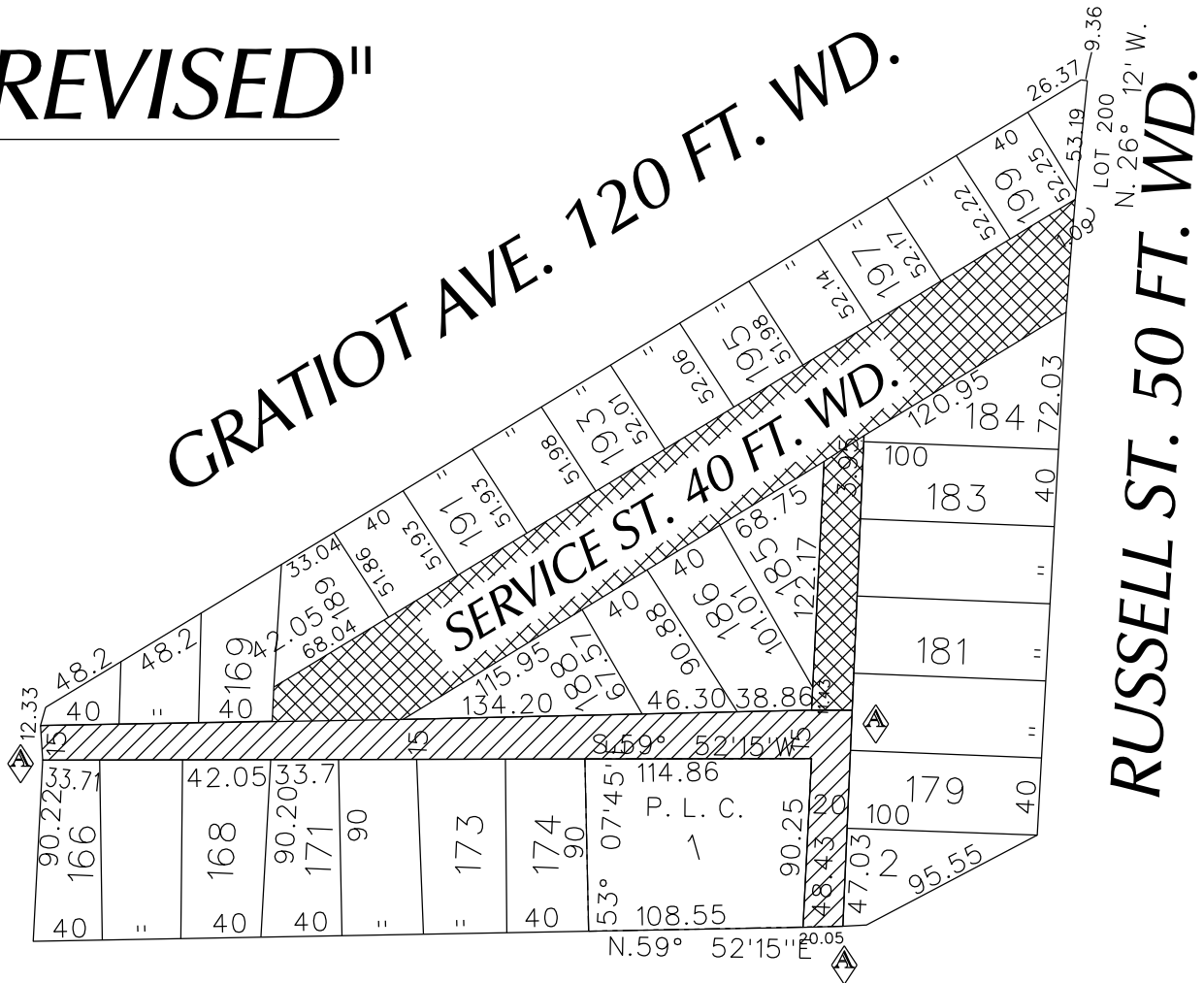
PETITION NO. 1801
 PARKSTONE DEVELOPMENT PARTNERS
 C/O DEVELOP DETROIT
 28 W. ADAMS AVE. SUITE 1300
 DETROIT, MICHIGAN 48226
 C/O BEN PHILLIPS
 PHONE NO. 313 960-7700



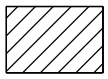
"REVISED"

RIVARD ST. 50 FT. WD.

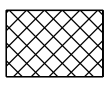
GRATIOT AVE. 120 FT. WD.



MAPLE ST. 50 FT. WD.



- CONVERSION TO EASEMENT



- OUTRIGHT VACATION

(FOR OFFICE USE ONLY)

CARTO 38 C

REQUEST TO OUTRIGHT VACATE
 SERVICE ST. 50 FT. WD. AND A PORTION OF THE
 NORTH/SOUTH PUBLIC ALLEY 20 FT. WD.
 AND REQUEST CONVERSION TO EASEMENT
 A PORTION OF THE NORTH/SOUTH PUBLIC ALLEY 20 FT. WD.
 AND THE EAST/WEST PUBLIC ALLEY, 15 FT. WD.
 IN THE AREA BOUND BY
 RUSSELL, MAPLE, RIVARD ST.
 AND GRATIOT AVE.

CITY OF DETROIT
CITY ENGINEERING DEPARTMENT
SURVEY BUREAU
 JOB NO. 01-01
 DRWG. NO. X 1801

B					
A	CHANGING FROM OUTRIGHT VACATION TO CONVERSION TO EASEMENT THE EASTWEST AND A PORTION OF THE NORTH/SOUTH PUBLIC ALLEY	WLW	KSM	KSM	1/26/18
DESCRIPTION		DRWN	CHKD	APPD	DATE
REVISIONS					
DRAWN BY	WLW	CHECKED			
DATE	12-21-17	APPROVED			