

TO: City Engineering Division, DPW
900 Cadillac Tower Building
65 Cadillac Square
Detroit, Michigan 48226-2873
Survey Bureau: 313-224-3970
Fax: 313-224-3471

Petition No. 1801REV

The proposed change in property (referred to above) would affect our services as follows:

- Not Involved.
- Involved; but asking you to hold action on this petition until further notice.
- Involved; the nature of our services, and the estimated costs of removing and/or rerouting such services are:
- Involved; have no objection to the request to outright vacate Service St. 40 ft wide and a portion of the north/south public alley 20 ft wide and request conversion to easement a portion of the north/south public alley 20 ft wide and the east/west public alley, 15 ft wide in the area bound by Russell, Maple, Rivard St. and Gratiot Ave. as shown on drawing no. x1801 dated 12/21/2017 and revised on 1/26/2018 provided that 100% signatures of abutting and affected property owners are secured.

Traffic Engineering Division - DPW
(Utility or City Department)

Ashok Patel
By

Sunny Jacob

City Traffic Engineer
Title

February 16, 2018
Date

313 224-1610
Area code-Telephone number

JL/jl

PETITION NO. 1801
 PARKSTONE DEVELOPMENT PARTNERS
 C/O DEVELOP DETROIT
 28 W. ADAMS AVE. SUITE 1300
 DETROIT, MICHIGAN 48226
 C/O BEN PHILLIPS
 PHONE NO. 313 960-7700



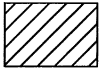
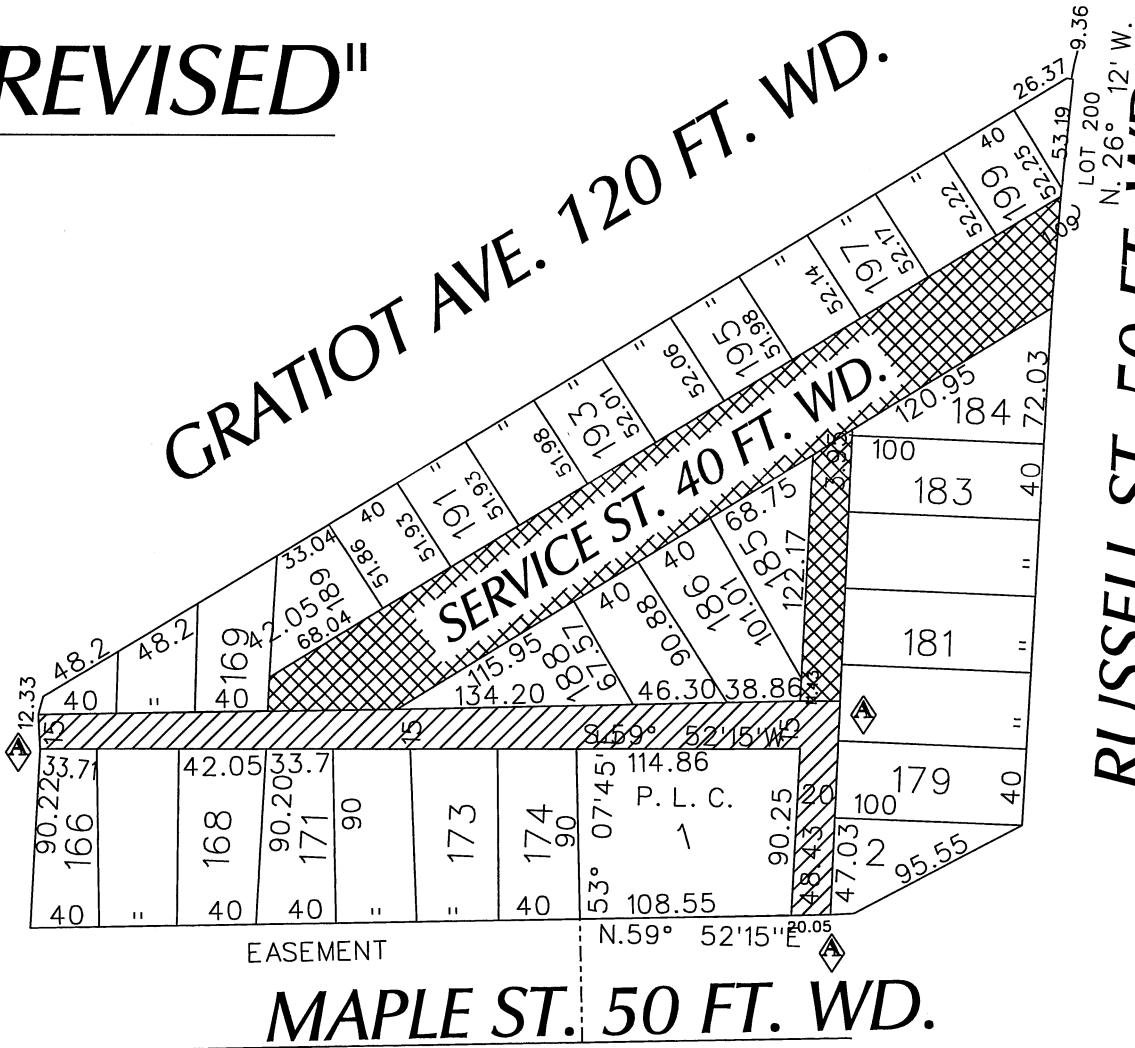
"REVISED"

RIVARD ST. 50 FT. WD.

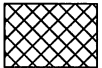
GRATIOT AVE. 120 FT. WD.

SERVICE ST. 40 FT. WD.

RUSSELL ST. 50 FT. WD.



- CONVERSION TO EASEMENT



- OUTRIGHT VACATION

(FOR OFFICE USE ONLY)

CARTO 38 C

B					
A	CHANGING FROM OUTRIGHT VACATION TO CONVERSION TO EASEMENT THE EASTWEST AND A PORTION OF THE NORTH/SOUTH PUBLIC ALLEY	WLW	KSM	KSM	1/26/18
REVISIONS					
DESCRIPTION	DRWN	CHKD	APPD	DATE	
DRAWN BY	WLW	CHECKED			
DATE	12-21-17	APPROVED			

REQUEST TO OUTRIGHT VACATE
 SERVICE ST. 40 FT. WD. AND A PORTION OF THE
 NORTH/SOUTH PUBLIC ALLEY 20 FT. WD.
 AND REQUEST CONVERSION TO EASEMENT
 A PORTION OF THE NORTH/SOUTH PUBLIC ALLEY 20 FT. WD.
 AND THE EAST/WEST PUBLIC ALLEY, 15 FT. WD.
 IN THE AREA BOUND BY
 RUSSELL, MAPLE, RIVARD ST.
 AND GRATIOT AVE.

CITY OF DETROIT	
CITY ENGINEERING DEPARTMENT	
SURVEY BUREAU	
JOB NO.	01-01
DRWG. NO.	X 1801