

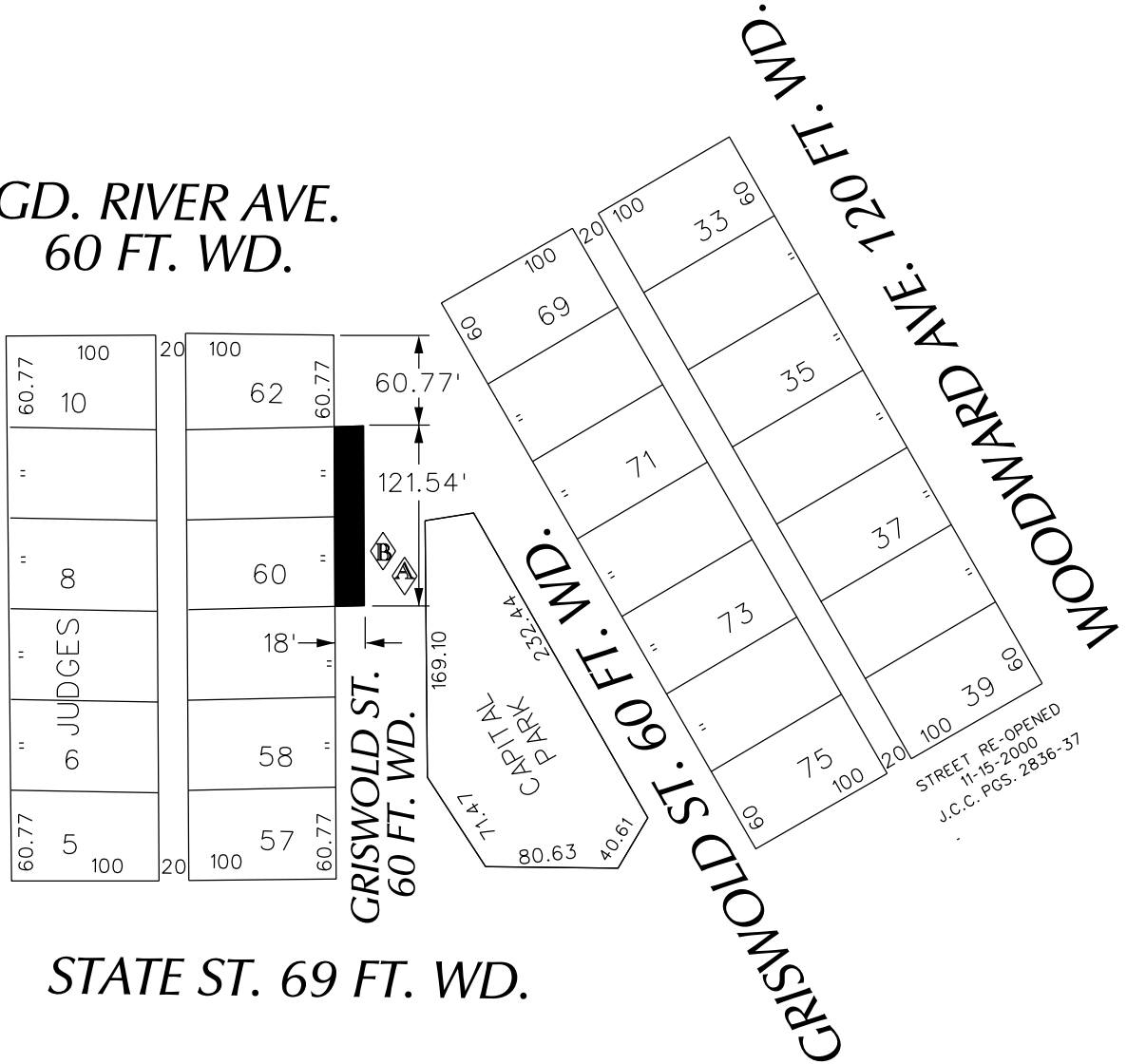
PETITION NO. 1772
 CAPITAL PARK PARTNERSHIP
 C/O GIFFELS WEBSTER
 28 W. ADAMS, SUITE 1200
 DETROIT, MICHIGAN 48226
 C/O MATT WOJCIECHOWSKI
 PHONE NO. 313 962-4442

"REVISED"



WASHINGTON BLVD. 195 FT. WD.

GD. RIVER AVE.
 60 FT. WD.



STATE ST. 69 FT. WD.



- REQUEST ENCROACHMENT

(FOR OFFICE USE ONLY)

CARTO 28 B

B	REDUCING THE WIDTH OF THE ENCROACHMENT FROM 30' TO 18'	WLW	KSM	KSM	10/22/18
A	REDUCING THE WIDTH OF THE ENCROACHMENT FROM 40' TO 30'	WLW	KSM	KSM	9/13/18
DESCRIPTION		DRWN	CHKD	APPD	DATE
REVISIONS					
DRAWN BY	WLW	CHECKED		KSM	
DATE	01-30-18	APPROVED			

REQUEST ENCROACHMENT
 INTO GRISWOLD
 AT 1249 GRISWOLD

CITY OF DETROIT
 CITY ENGINEERING DEPARTMENT
 SURVEY BUREAU

JOB NO. 01-01

DRWG. NO. X 1772