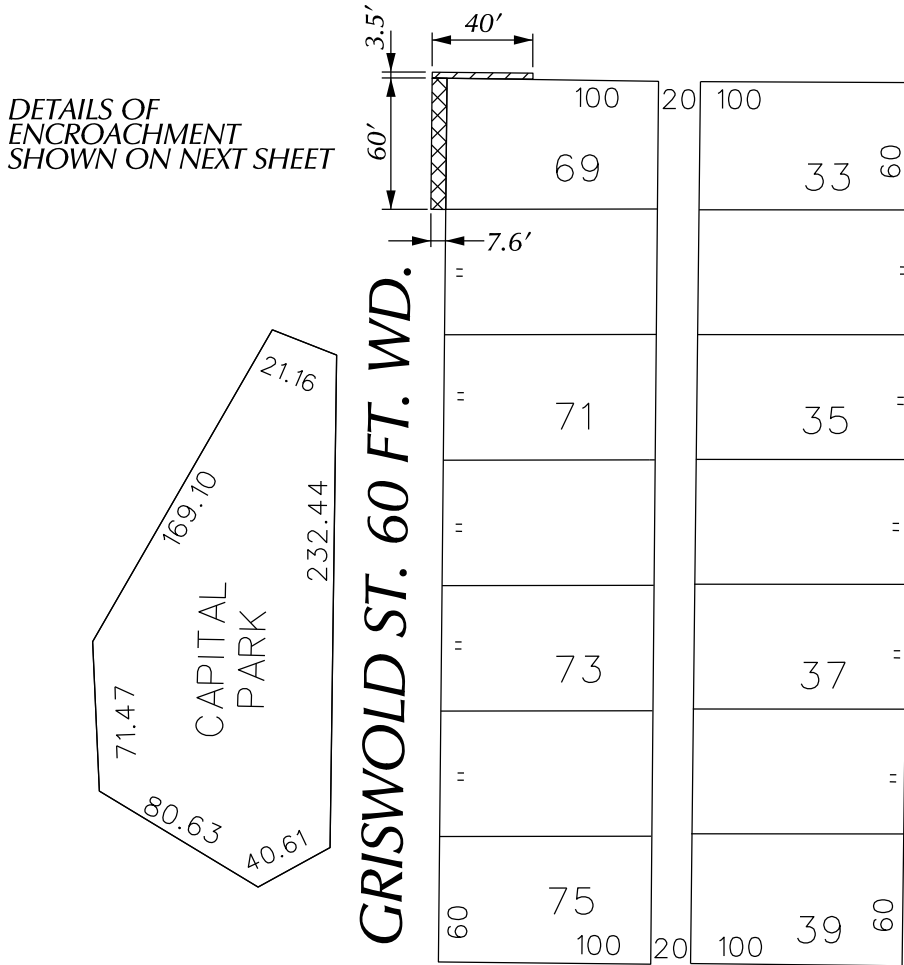


PETITION NO. 1770  
 GRAND RIVER LLC  
 C/O GIFFELS WEBSTER  
 28 W. ADAMS, SUITE 1200  
 DETROIT, MICHIGAN 48226  
 C/O MICHAEL MARKS P.E.  
 PHONE NO. 313 980-1469



**W. GRAND RIVER AVE. 60 FT. WD.**

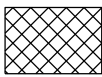


DETAILS OF ENCROACHMENT SHOWN ON NEXT SHEET

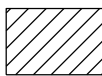
**GRISWOLD ST. 60 FT. WD.**

**WOODWARD AVE. 120 FT. WD.**

**STATE ST. 60 FT. WD.**



- REQUEST ENCROACHMENT  
 (With Sidewalk Cafe at Grade and With Exterior Architectural Elements from 8 Feet Above Grade to 78 Feet Above Grade)



- REQUEST ENCROACHMENT  
 (With Exterior Architectural Elements from 8 Feet Above Grade to 78 Feet Above Grade)

(FOR OFFICE USE ONLY)

CARTO 28 B

B					
A					
DESCRIPTION	DRWN	CHKD	APPD	DATE	
REVISIONS					
DRAWN BY	CHECKED				
DATE	APPROVED				
JK					
02-06-18					

**REQUEST ENCROACHMENT ON GRISWOLD ST. AND W. GRAND RIVER AVE.**  
 (For Sidewalk Cafe and Various Architectural Elements)

CITY OF DETROIT CITY ENGINEERING DEPARTMENT SURVEY BUREAU	
JOB NO.	01-01
DRWG. NO.	X 1770