

PETITION NO. 1769
 INDIAN VILLAGE TENNIS CLUB
 1502 PARKER AVE.
 DETROIT, MICHIGAN 48214
 C/O SUE WEBB-DICKSON
 PHONE NO. 313 320-3014

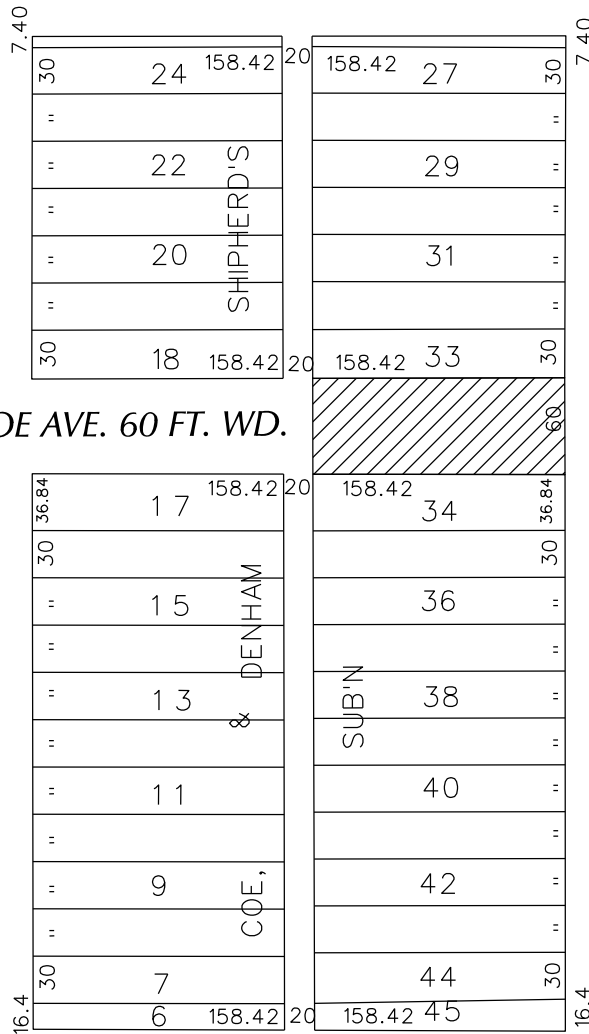


ST. PAUL AVE. 60 FT. WD.

VAN DYKE AVE. 66 FT. WD.

COE AVE. 60 FT. WD.

PARKER AVE. 60 FT. WD.



- CONVERSION TO EASEMENT

(FOR OFFICE USE ONLY)

CARTO 46 B

B					CONVERSION TO EASEMENT THE EAST PORTION OF COE AVE., 60 FT. WD. IN THE AREA BOUND BY ST. PAUL, PARKER, AGNES AND VAN DYKE AVE.	CITY OF DETROIT CITY ENGINEERING DEPARTMENT SURVEY BUREAU
	A					
DESCRIPTION		DRWN	CHKD	APPD	DATE	JOB NO. 01-01
REVISIONS						DRWG. NO. X 1769
DRAWN BY	WLW	CHECKED				
DATE	09-27-17	APPROVED				