

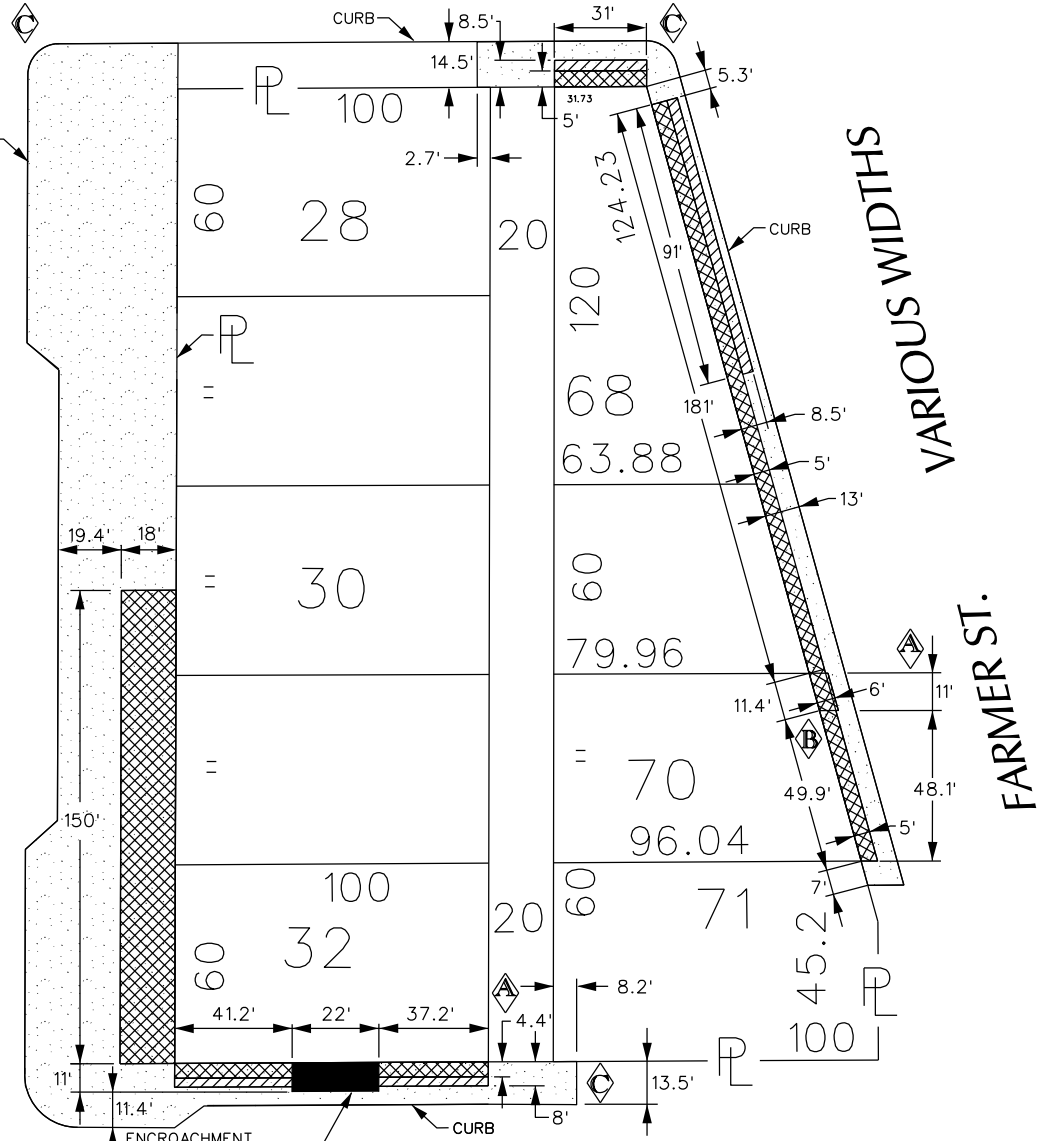
PETITION NO. 1768
 BEDROCK DETROIT
 C/O MANNIK SMITH GROUP
 65 CADILLAC SQUARE SUITE 3311
 DETROIT, MICHIGAN 48226
 C/O DAVID RYZYI
 PHONE NO. 313 961-9500

"REVISED"

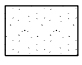

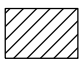
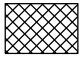


JOHN R. ST. 60 FT. WD.

WOODWARD AVE. 120 FT. WD.



E. GRAND RIVER AVE. 60 FT. WD.

-  - REQUEST ENCROACHMENT (With Tree, Tree Grates At and Below Grade)
-  - REQUEST ENCROACHMENT (With Hotel Entrance Awnings - 10' Above Grade)
-  - REQUEST ENCROACHMENT (With Exterior Lighting and Awnings - 8' Above Grade)
-  - REQUEST ENCROACHMENT (With Outdoor Seating, Planters, Exterior Lighting and Awnings - at Grade)

REVISIONS	DESCRIPTION	DRWN	CHKD	APPD	DATE
C	ADDING ENCROACHMENT AREA	WLW	KSM	KSM	10/2/18
B	PULLING BACK THE AWNING ON FARMER	WLW	KSM	KSM	10/2/18
A	MAINTAINING A 6' WALKWAY ALL AROUND	WLW	KSM	KSM	5/9/18
DRAWN BY		CHECKED			
DATE		APPROVED			

(FOR OFFICE USE ONLY)

**REQUEST ENCROACHMENT
 VARIOUS LOCATIONS
 AT 1400 WOODWARD**

*(With Outdoor Seating, Planters, Exterior Lighting
 Hotel Entrance Awnings, Other Awnings
 and Encroachments)*

CARTO 28 A

CITY OF DETROIT
 CITY ENGINEERING DEPARTMENT
 SURVEY BUREAU

JOB NO. 01-01
 DRWG. NO. X 1768