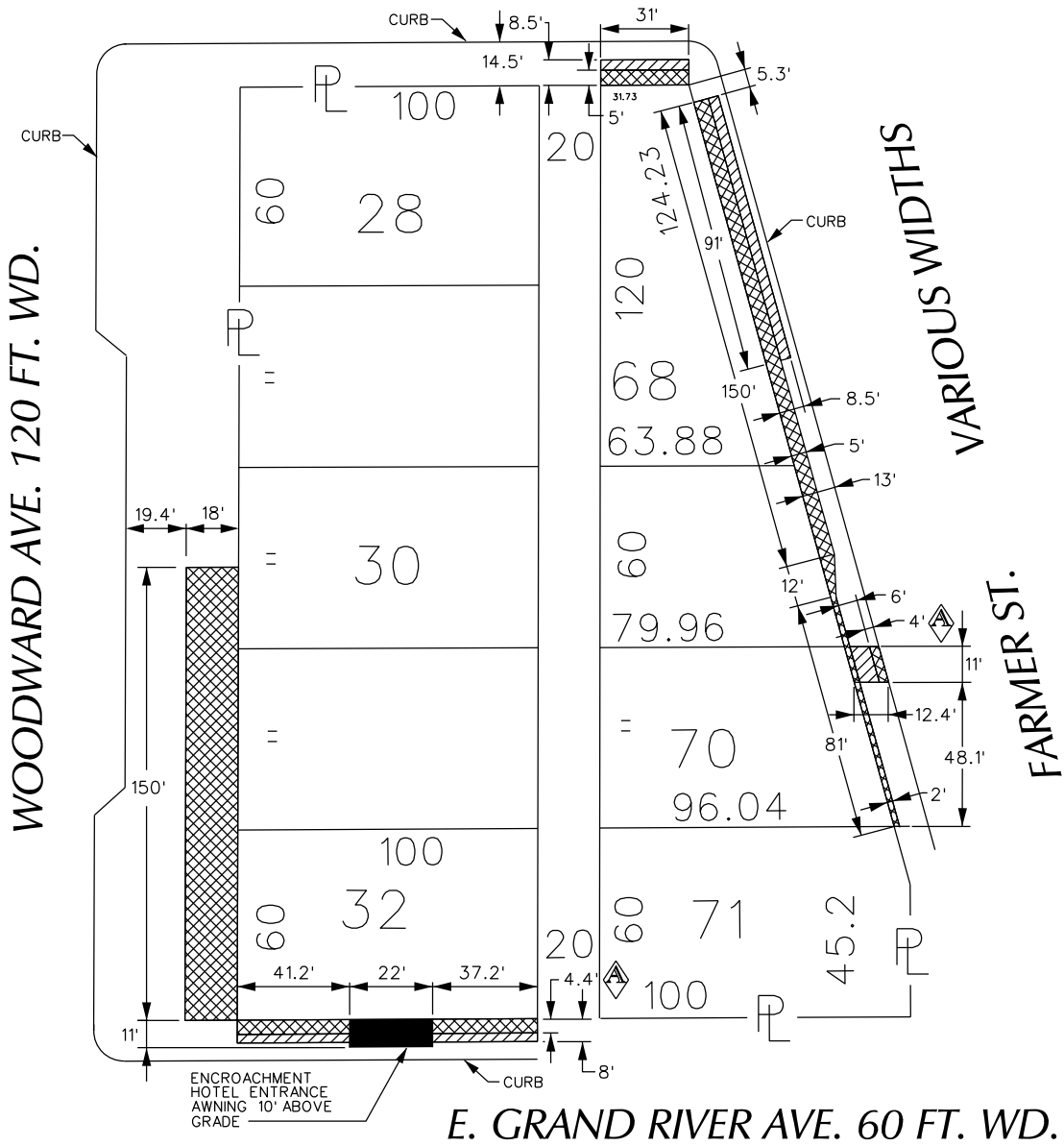


PETITION NO. 1768  
 BEDROCK DETROIT  
 C/O MANNIK SMITH GROUP  
 65 CADILLAC SQUARE SUITE 3311  
 DETROIT, MICHIGAN 48226  
 C/O DAVID RYZYI  
 PHONE NO. 313 961-9500

**"REVISED"**



JOHN R. ST. 60 FT. WD.



- REQUEST ENCROACHMENT  
(With Hotel Entrance Awnings - 10' Above Grade)
- REQUEST ENCROACHMENT  
(With Exterior Lighting and Awnings - 8' Above Grade)
- REQUEST ENCROACHMENT  
(With Outdoor Seating, Planters, Exterior Lighting and Awnings - at Grade)

(FOR OFFICE USE ONLY)

CARTO 28 A

<b>B</b>					
<b>A</b>	MAINTAINING A 6' WALKWAY ALL AROUND	WLW	KSM	KSM	5/9/18
	<b>DESCRIPTION</b>	<b>DRWN</b>	<b>CHKD</b>	<b>APPD</b>	<b>DATE</b>
<b>REVISIONS</b>					
<b>DRAWN BY</b>	WLW	<b>CHECKED</b>			
<b>DATE</b>	04-05-18	<b>APPROVED</b>			

**REQUEST ENCROACHMENT  
 VARIOUS LOCATIONS  
 AT 1400 WOODWARD**  
 (With Outdoor Seating, Planters, Exterior Lighting  
 Hotel Entrance Awnings and Other Awnings)

<b>CITY OF DETROIT    CITY ENGINEERING DEPARTMENT    SURVEY BUREAU</b>	
<b>JOB NO.</b>	01-01
<b>DRWG. NO.</b>	X 1768