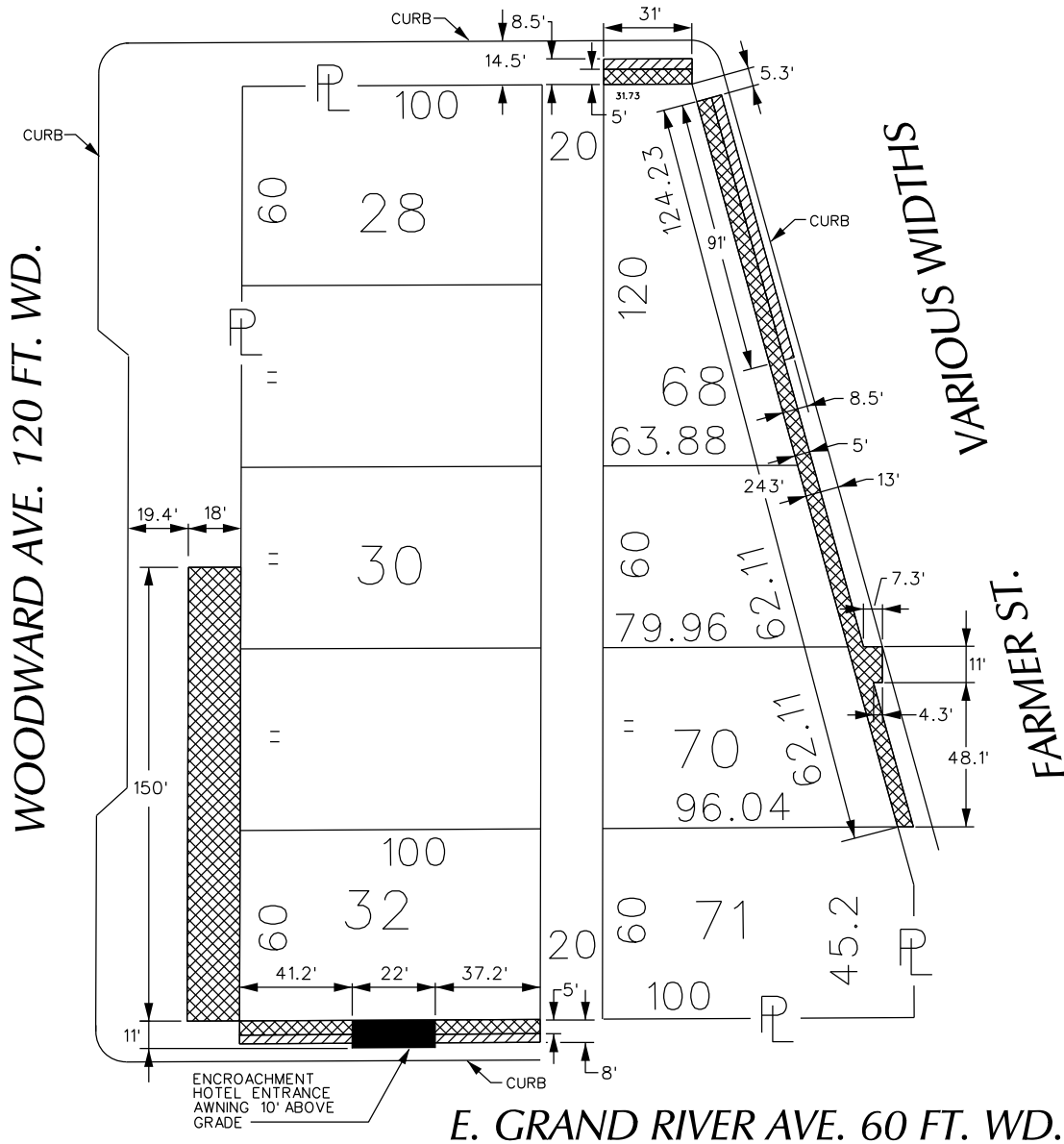





PETITION NO. 1768
 BEDROCK DETROIT
 C/O MANNIK SMITH GROUP
 65 CADILLAC SQUARE SUITE 3311
 DETROIT, MICHIGAN 48226
 C/O DAVID RYZYI
 PHONE NO. 313 961-9500



JOHN R. ST. 60 FT. WD.



-  - REQUEST ENCROACHMENT
(With Hotel Entrance Awnings - 10' Above Grade)
-  - REQUEST ENCROACHMENT
(With Exterior Lighting and Awnings - 8' Above Grade)
-  - REQUEST ENCROACHMENT
(With Outdoor Seating, Planters, Exterior Lighting and Awnings - at Grade)

(FOR OFFICE USE ONLY)

CARTO 28 A

B					REQUEST ENCROACHMENT VARIOUS LOCATIONS AT 1400 WOODWARD <i>(With Outdoor Seating, Planters, Exterior Lighting Hotel Entrance Awnings and Other Awnings)</i>	CITY OF DETROIT CITY ENGINEERING DEPARTMENT SURVEY BUREAU
	A					
DESCRIPTION		DRWN	CHKD	APPD	DATE	JOB NO. 01-01 DRWG. NO. X 1768
REVISIONS						
DRAWN BY		CHECKED				
DATE		APPROVED				
04-05-18						