

PETITION NO. 1761
 DETROIT MT. ELLIOTT REAL ESTATE LLC
 2500 ENTERPRIZE DR.
 ALLEN PARK, MICHIGAN 48101
 C/O CURT FELCH
 PHONE NO. 734 721-3334



GEORGIA AVE. 60 FT. WD.

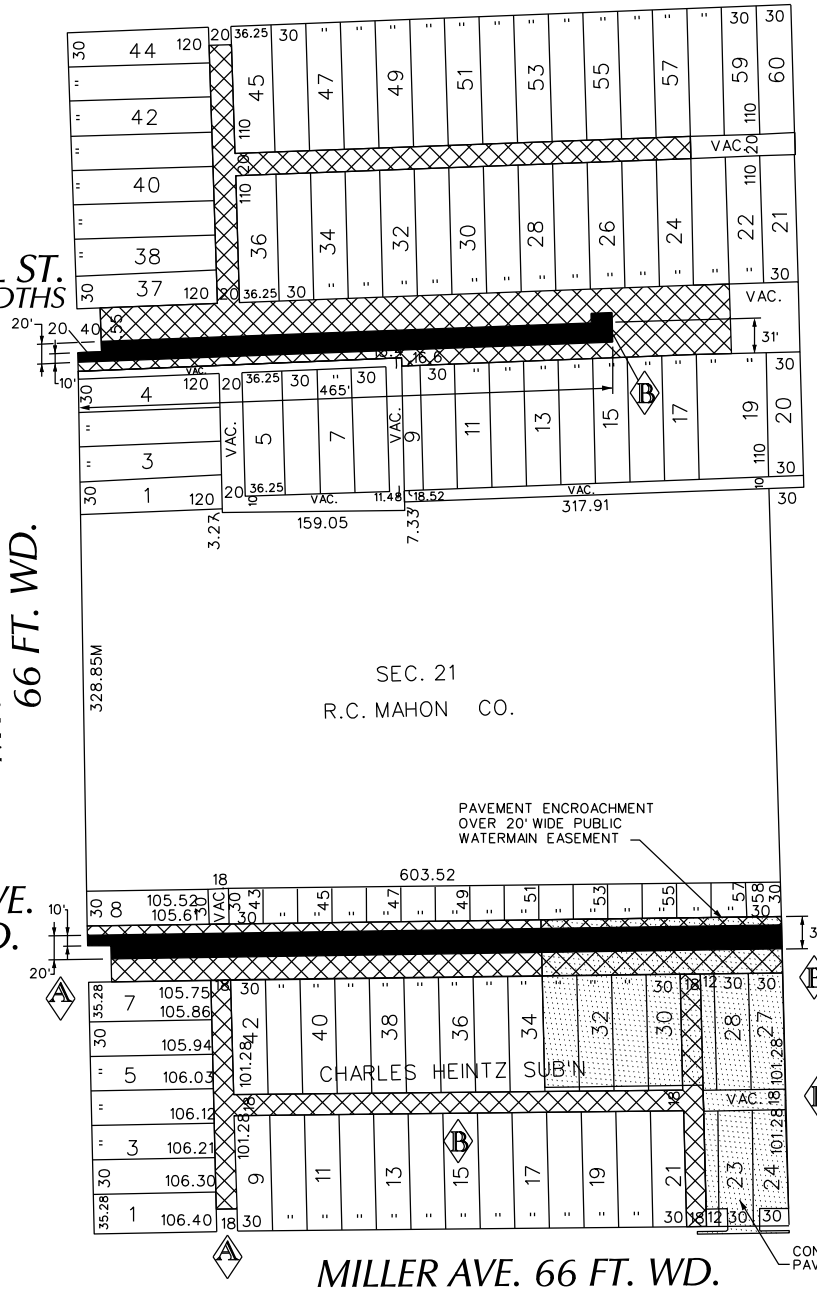
"REVISED"

NEWHALL ST.
 VARIOUS WIDTHS

MT. ELLIOTT AVE.
 66 FT. WD.

HEINTZ AVE.
 50 FT. WD.

NEW YORK CENTRAL R.R.



- WATERMAIN EASEMENT
(With Watermain and Hydrant)
- OUTRIGHT VACATION

(FOR OFFICE USE ONLY)

CARTO 50 E

B	ADDING 20' WIDE WATERMAIN EASEMENT WATERMAIN, HYDRANT AND PAVEMENT ENCROACHMENT.	WLW	KSM	KSM	9/12/18
A	REMOVE HEINTZ ST. AND THE ALLEYS SOUTH OF HEINTZ ST. FROM THE PETITION.	WLW	KSM	KSM	3/6/18
DESCRIPTION		DRWN	CHKD	APPD	DATE
REVISIONS					
DRAWN BY	WLW	CHECKED		KSM	
DATE	09-06-17	APPROVED			

REQUEST TO OUTRIGHT VACATE
VARIOUS PUBLIC STREETS AND ALLEYS
VARIOUS WIDTHS
IN THE AREA BOUND BY
MILLER, MT. ELLIOTT, GEORGIA AVE.
AND NEW YORK CENTRAL R.R.

CITY OF DETROIT CITY ENGINEERING DEPARTMENT SURVEY BUREAU	
JOB NO.	01-01
DRWG. NO.	X 1761