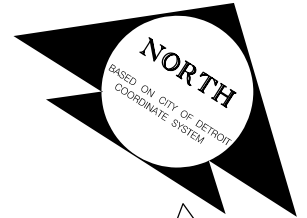
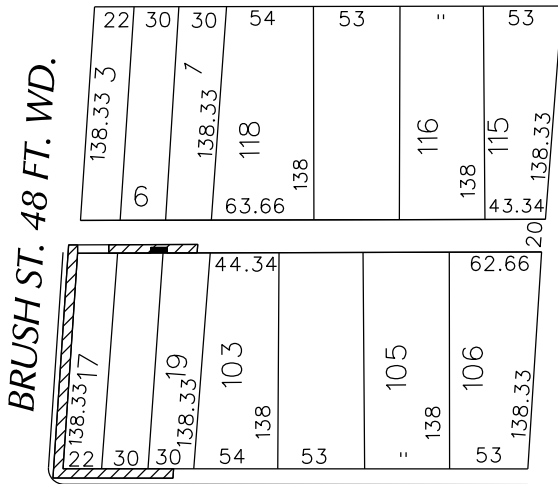


PETITION NO. 1737
 GIFFELS WEBSTER
 28 W. ADAMS, SUITE 1200
 DETROIT, MICHIGAN 48226
 C/O MICHAEL MARKS P.E.
 PHONE NO. 313 962-4442



E. LAFAYETTE AVE. 60 FT. WD.

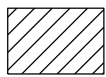


E. FORT ST. 50 FT. WD.

BEAUBIEN ST.
120 FT. WD.

BRUSH ST. 48 FT. WD.

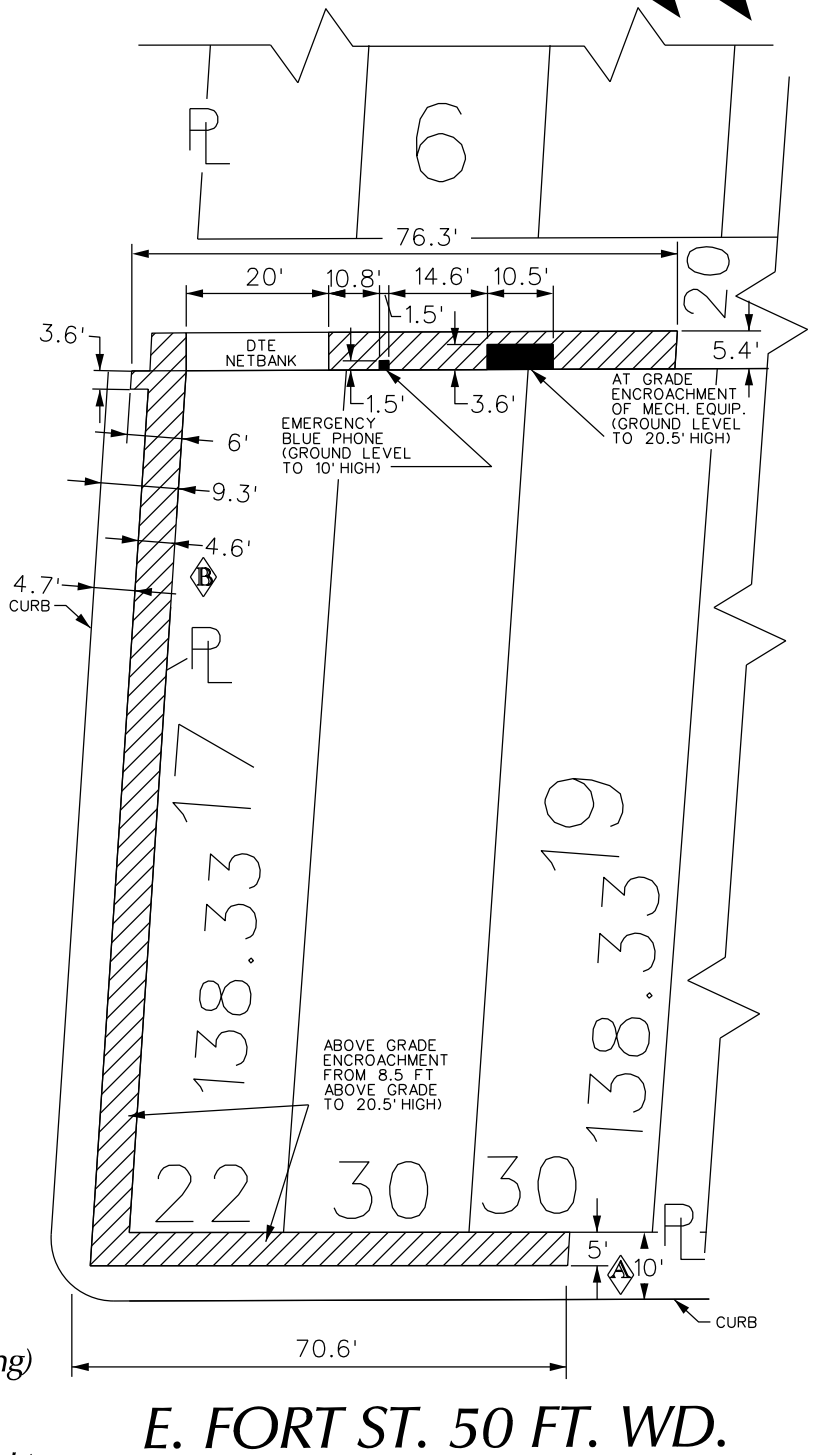
"REVISED"



- REQUEST ENCROACHMENT
 (With Architectural Elements,
 Signs, Lighting, Canopies, etc...
 8.5' Above Grade to Top of Building)



- REQUEST ENCROACHMENT
 (With Emergency Blue Phone
 Duckwork, Exhaust Fan and Bollards)



E. FORT ST. 50 FT. WD.

(FOR OFFICE USE ONLY)

CARTO 28 F

B	REDUCING ENCROACHMENT ON BRUSH ST.	WLW	KSM	KSM	1/17/18
A	REDUCING ENCROACHMENT ON E. FORT ST.	WLW	KSM	KSM	1/17/18
REVISIONS		DRWN	CHKD	APPD	DATE
DRAWN BY	WLW	CHECKED			
DATE	10-03-17	APPROVED			

REQUEST ENCROACHMENT
 A PORTION OF THE EAST/WEST PUBLIC ALLEY
 (With Emergency Blue Phone, Duckwork,
 Exhaust Fan and Bollards)
 AND INTO E. FORT AND BRUSH ST.
 (With Architectural Elements, Signs, Lighting,
 Canopies, etc... 8 1/2' Above Grade to Top of Building)
 AT 407 E. FORT ST.

CITY OF DETROIT	
CITY ENGINEERING DEPARTMENT	
SURVEY BUREAU	
JOB NO.	01-01
DRWG. NO.	X 1737