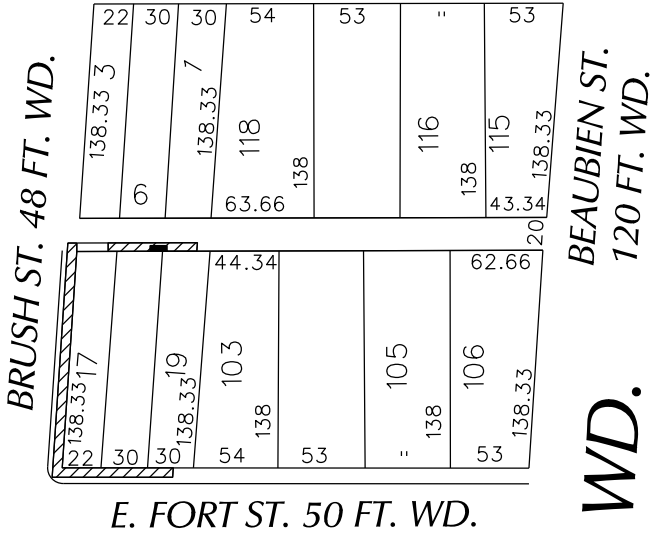


PETITION NO. 1737
 GIFFELS WEBSTER
 28 W. ADAMS, SUITE 1200
 DETROIT, MICHIGAN 48226
 C/O MICHAEL MARKS P.E.
 PHONE NO. 313 962-4442

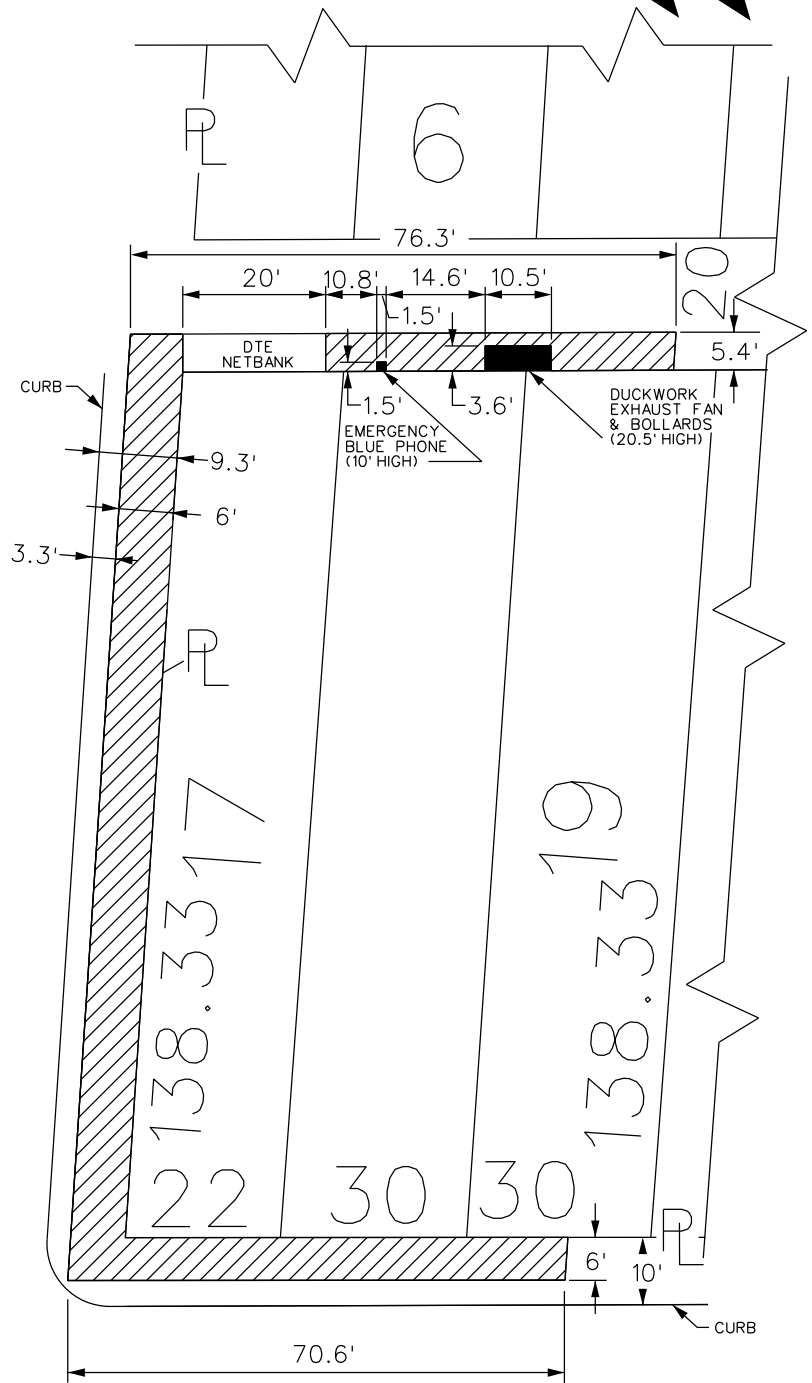


E. LAFAYETTE AVE. 60 FT. WD.

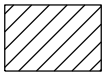


E. FORT ST. 50 FT. WD.

BRUSH ST. 48 FT. WD.



E. FORT ST. 50 FT. WD.



- REQUEST ENCROACHMENT
 (With Architectural Elements,
 Signs, Lighting, Canopies, etc...
 8' Above Grade to Top of Building)



- REQUEST ENCROACHMENT
 (With Emergency Blue Phone
 Duckwork, Exhaust Fan and Bollards)

(FOR OFFICE USE ONLY)

CARTO 28 F

B					
A					
DESCRIPTION		DRWN	CHKD	APPD	DATE
REVISIONS					
DRAWN BY	WLW	CHECKED			
DATE	10-03-17	APPROVED			

REQUEST ENCROACHMENT
 A PORTION OF THE EAST/WEST PUBLIC ALLEY
 (With Emergency Blue Phone, Duckwork,
 Exhaust Fan and Bollards)
 AND INTO E. FORT AND BRUSH ST.
 (With Architectural Elements, Signs, Lighting,
 Canopies, etc... 8' Above Grade to Top of Building)
 AT 407 E. FORT ST.

CITY OF DETROIT CITY ENGINEERING DEPARTMENT SURVEY BUREAU	
JOB NO.	01-01
DRWG. NO.	X 1737