

TO: City Engineering Division, DPW
2 Woodward Ave., Suite 642
Detroit, MI 48226-3462
Survey Bureau: 313-224-3970

Petition No. 1683

The proposed change in property (referred to above) would affect our services as follows:

- () Not Involved.
- () Involved; but asking you to hold action on this petition until further notice.
- () Involved; the nature of our services, and the estimated costs of removing and/or rerouting such services are:
- (X) Involved; have no objection to the requested encroachment into Temple at 2771 Woodward Ave. (with planters, trees, shrubs, railings, bike racks, street lights, removable bollards, pole w/blue light security phone, cameras and warning strip) as shown on drawing no. x1683 dated 1/03/2018 provided that a minimum 6 ft wide clear unobstructed sidewalk shall be maintained for pedestrian traffic at all times.

Traffic Engineering Division - DPW
(Utility or City Department)

Ashok Patel
By

Sunny Jacob

City Traffic Engineer
Title

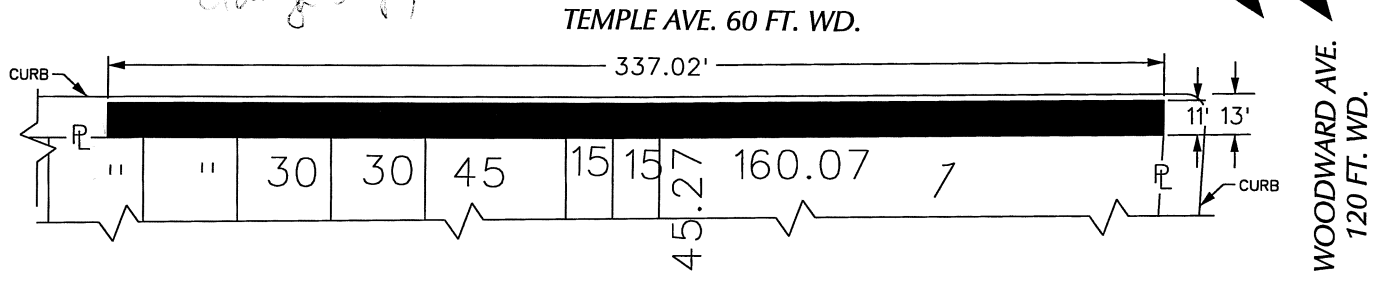
January 17, 2018
Date

313 224-1610
Area code-Telephone number

MA/ma

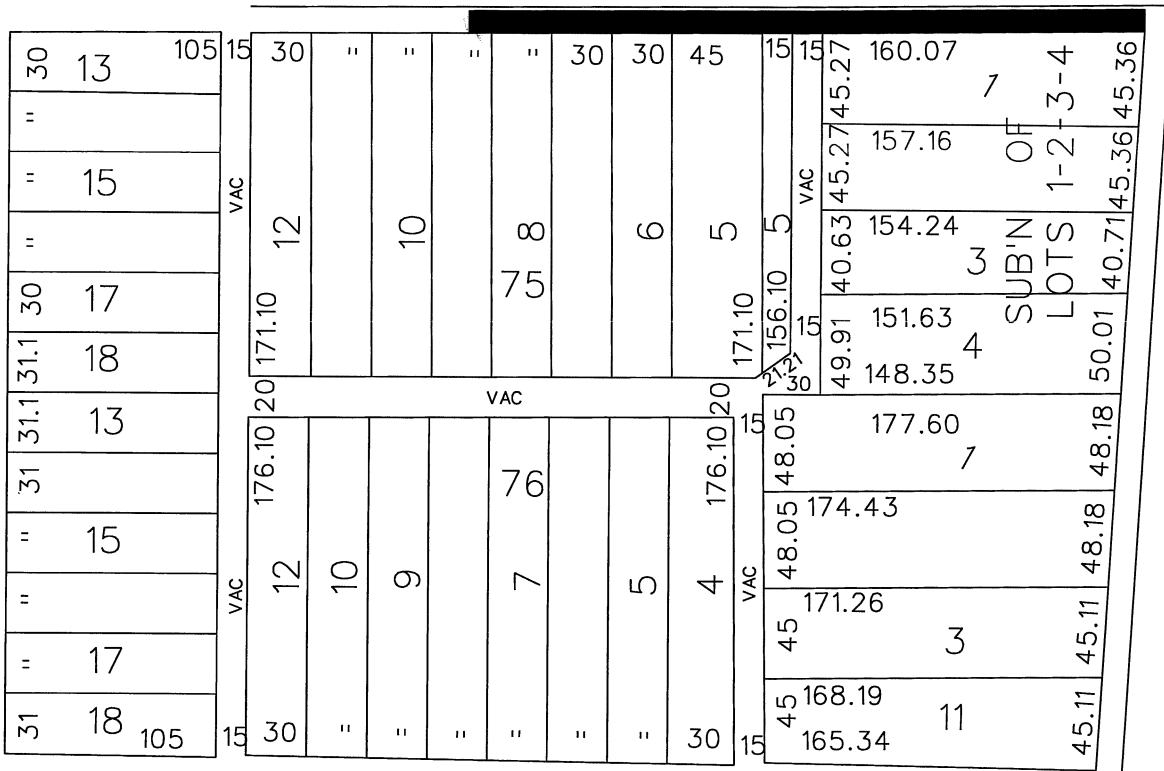
PETITION NO. 1683
 WAYNE STATE UNIVERSITY
 5454 CASS AVE.
 DETROIT, MICHIGAN 48202
 C/O HARRY E. WYATT JR.
 PHONE NO. 313 577-4301

*Mark Ledent (P.M.)
 313-577-5599
 Marc.Ledent@wayne.edu*



TEMPLE AVE. 60 FT. WD.

PARK AVE. 60 FT. WD.



WOODWARD AVE. 120 FT. WD.

SPROAT ST. 50 FT. WD.

EASEMENT



- REQUEST ENCROACHMENT
 (With Planters, Trees, Shrubs, Railings, Bike Racks,
 Street Lights, Removable Bollards, Pole w/Blue Light
 Security Phone, Cameras and Warning Strip)

(FOR OFFICE USE ONLY)

CARTO 29 E

B					
A					
DESCRIPTION		DRWN	CHKD	APPD	DATE
REVISIONS					
DRAWN BY		CHECKED			
DATE		APPROVED			
01-03-18					

**REQUEST ENCROACHMENT
 INTO TEMPLE
 AT 2771 WOODWARD AVE.**
 (With Planters, Trees, Shrubs, Railings, Bike Racks,
 Street Lights, Removable Bollards, Pole w/Blue Light
 Security Phone, Cameras and Warning Strip)

CITY OF DETROIT	
CITY ENGINEERING DEPARTMENT	
SURVEY BUREAU	
JOB NO.	01-01
DRWG. NO.	X 1683