

City of Detroit
OFFICE OF THE CITY CLERK

Janice M. Winfrey
City Clerk

Vivian A. Hudson
Deputy City Clerk

DEPARTMENTAL REFERENCE COMMUNICATION

Tuesday, July 11, 2017

To: The Department or Commission Listed Below

From: Janice M. Winfrey, Detroit City Clerk

The following petition is herewith referred to you for report and recommendation to the City Council.

In accordance with that body's directive, kindly return the same with your report in duplicate within four (4) weeks.

PLANNING AND DEVELOPMENT DEPARTMENT DPW - CITY ENGINEERING DIVISION

1683 *Wayne State University, request for permanent construction within the Temple street right-of-way and permanent construction within the City of Detroit water main easement along Woodward Avenue.*

1/4/18 E MAILED MR. WYATT JR. AND MR. VOGT ON MATTERS INVOLVED W/COST.

1/24/18 - E MAILED MR. WYATT JR. AND MR. VOGT ON DTE MAT. "OBJECTION"

5/3/18 - E MAILED MR. WYATT JR. AND MR. VOGT ON ALL OF THE UTILITY RESPONSES THAT CAME IN.

6/19/18 - TALKED TO WSU. THEY WILL GET IN TOUCH WITH ME AFTER 200 Coleman A. Young Municipal Center • Detroit, Michigan 48226-3400

(313) 224 3260 • Fax (313) 224-1466

THEY TALKED TO THEIR FACILITY MGR.

1/4/19 - TALKED TO MR. VOGT. HE WILL REACT OUT TO DTE

1/23/19 - TALKED TO CHANELLE. SHE WILL PROVIDE REVISIONS TO IT SOON.

29 E
3

→ OVER →

The Honorable City Council
Attn: Office of the City Clerk
Coleman A. Young Municipal Center
2 Woodward Avenue, Suite 200
Detroit, MI 48226

RE: **Wayne State University-Mike Ilitch School of Business (MISB) Petition Request Information**
Project Address: 2771 Woodward Avenue, Detroit, Michigan 48201

The petition request is for permanent construction within the Temple Street right-of-way and permanent construction within the City of Detroit water main easement along Woodward Avenue. The WSU MISB project is located at the southwest corner of Temple Street and Woodward.

The intent of this narrative is to begin the petition request process for construction within the right-of-way and water main easement noted above.

Because of WSU's status as a State University, State of Michigan guidelines and inspectors govern WSU development projects (this applies *only* to work outside the ROW and easement). Therefore, construction within WSU property limits will not be going through typical BSEED review, as the State of Michigan is the Authority Having Jurisdiction (AHJ) for the project.

WSU understands that construction within City of Detroit rights-of-way and easements requires City review. Proposed ROW and easement construction elements are outlined below. The format of this narrative follows City of Detroit document titled "City Council Petition Request Instructions" which requires answers to "who, what, when, where, and why." Please see below.

Who:

- Wayne State University
Harry E. Wyatt, Jr.
Associate Vice President
Facilities Planning & Management
313-577-4301
harry.wyatt@wayne.edu

Where and What:

Temple Ave. ROW (Area between Temple Ave. ROW and Temple Curb). Construction of the following items is proposed:

- Planters, trees, shrubs
- Temple Curbs, pavement (pedestrian and vehicular), railings
- Bike racks between planters
- District street lights
- Removable bollards
- Pole with blue light, security phone, and cameras
- Detectable warning strip

MARKING AGREEMENT
PETITION

WOODWARD TO PARK

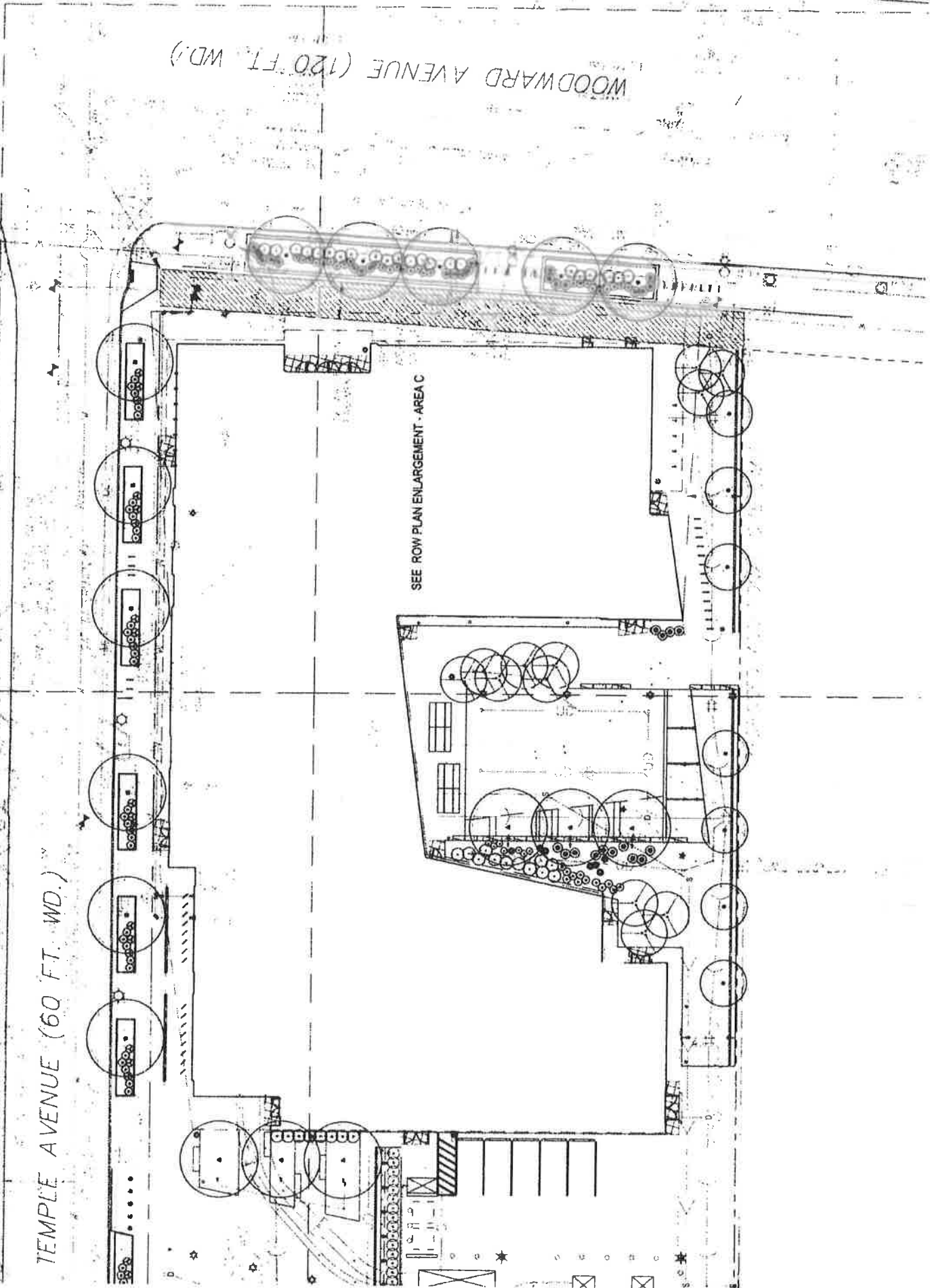
WOODWARD AVENUE (120 FT. WD.)

SEE ROW PLAN ENLARGEMENT - TEMPLE AREA B

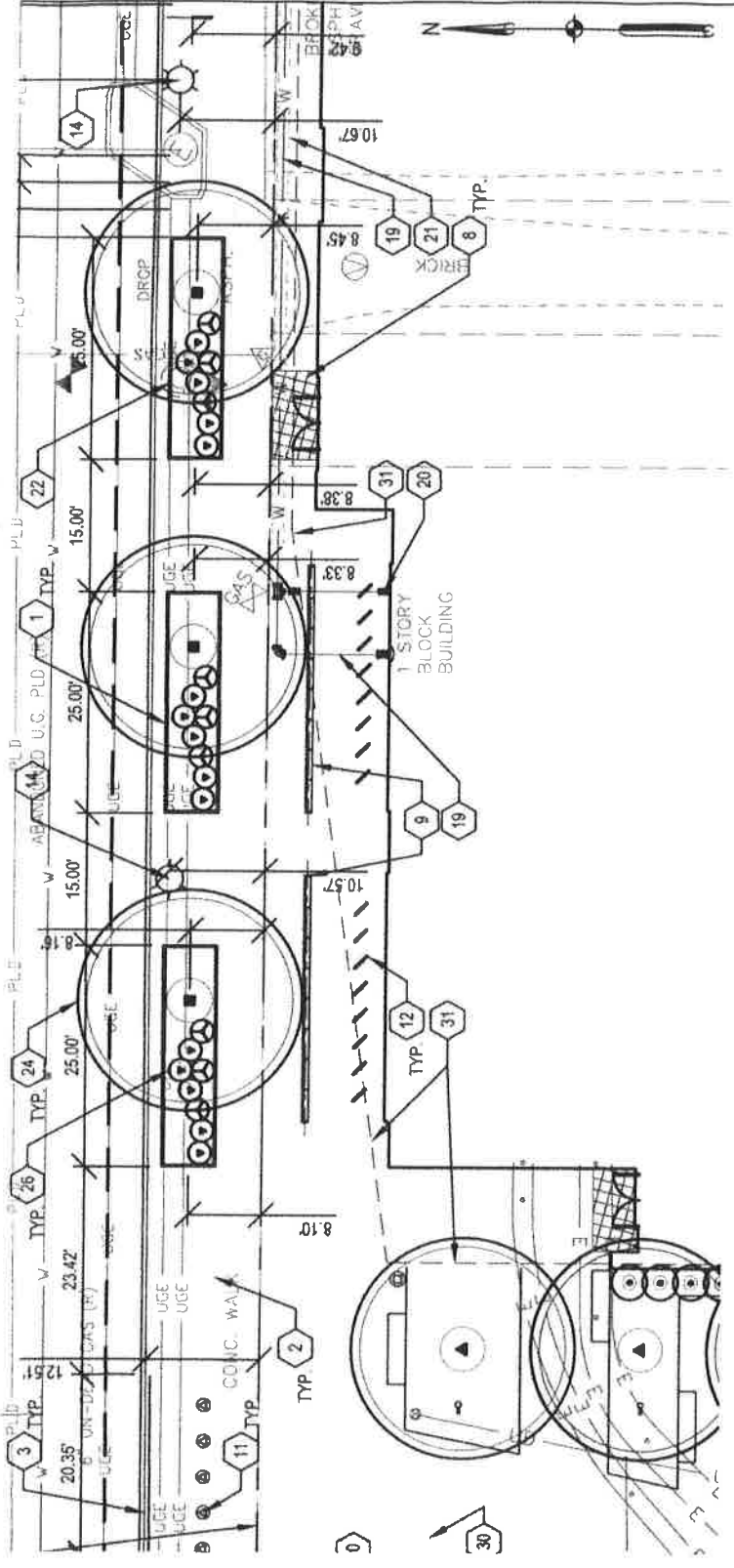
SEE ROW PLAN ENLARGEMENT - TEMPLE AREA A

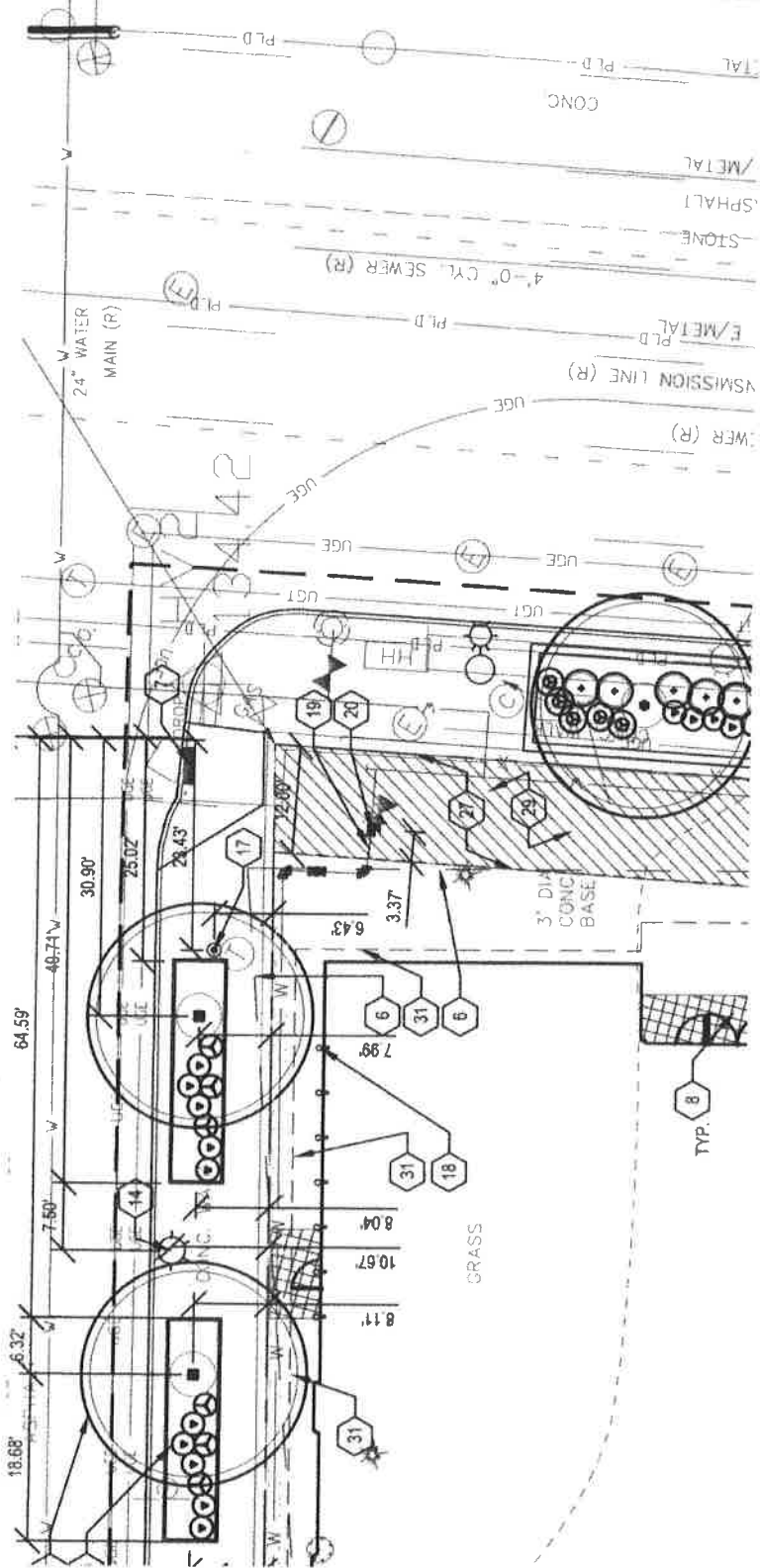
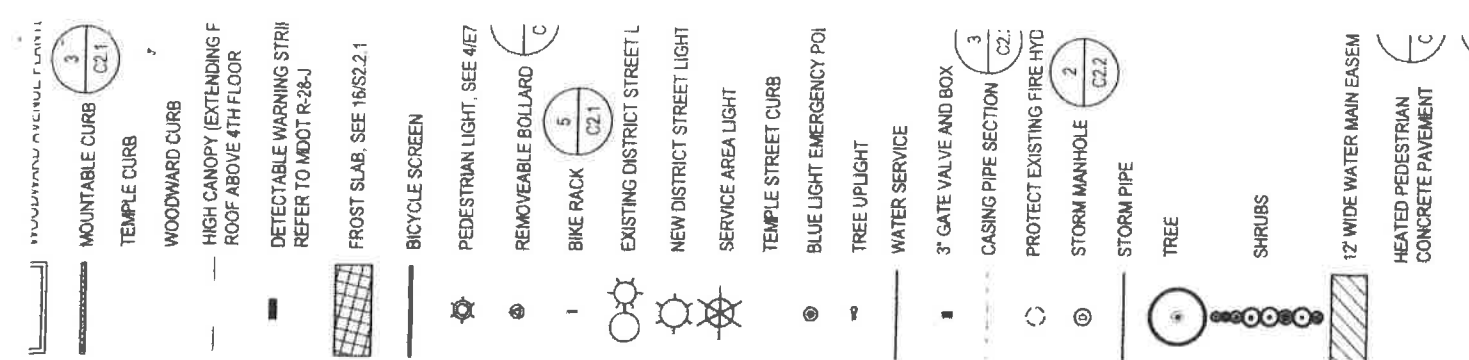
TEMPLE AVENUE (60 FT. WD.)

SEE ROW PLAN ENLARGEMENT - AREA C



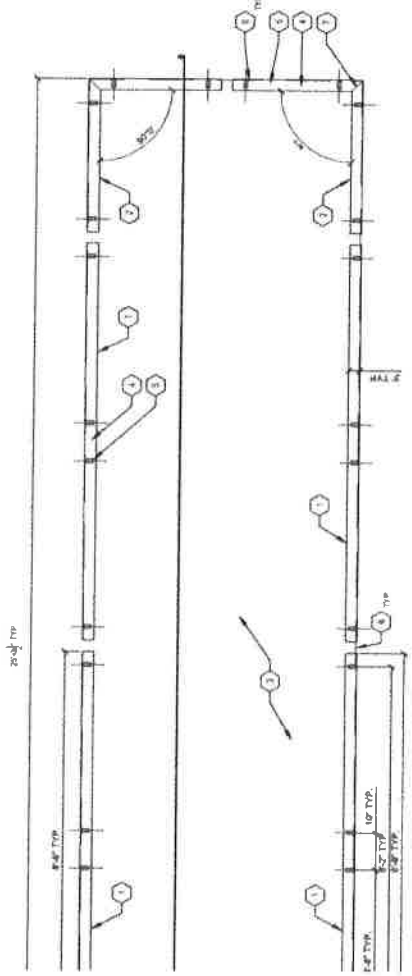
- 1 WOODWARD AVENUE F
- 2 MOUNTABLE CURB
- 3 TEMPLE CURB
- 4 WOODWARD CURB
- 5 HIGH CANOPY (EXTENSIVE) ABOVE 4TH FLOOR
- 6 DETECTABLE WARNING REFER TO MDOT R-28-J
- 7 FROST SLAB, SEE 16/S2
- 8 BICYCLE SCREEN
- 9 PEDESTRIAN LIGHT, SET
- 10 REMOVEABLE BOLLARD
- 11 BIKE RACK
- 12 EXISTING DISTRICT STREET
- 13 NEW DISTRICT STREET
- 14 SERVICE AREA LIGHT
- 15 TEMPLE STREET CURB
- 16 BLUE LIGHT EMERGENCY
- 17 TREE UPLIGHT
- 18 WATER SERVICE
- 19 3" GATE VALVE AND BOX
- 20 CASING PIPE SECTION 1
- 21 PROTECT EXISTING FIRE
- 22 STORM MANHOLE
- 23 STORM PIPE
- 24 TREE
- 25 SHRUBS
- 26 12' WIDE WATER MAIN E
- 27 HEATED PEDESTRIAN CONCRETE PAVEMENT



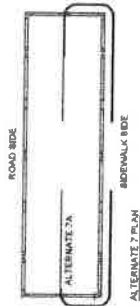


- 1 1-1/2" TUBULAR STEEL POST
- 2 EDGE OF PEBBLE-TAN CONCRETE
- 3 WELD TO WELD CONTINUOUSLY FULLY WELDED JOINTS TO GALVANIZING

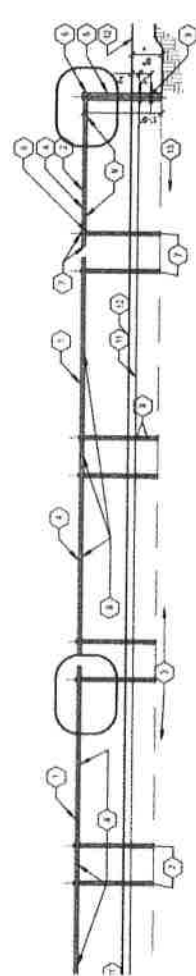
ENTRY COURTYARD
SCALE 1/4" = 1'



- 1 STRAIGHT SEGMENT
- 2 CORNER SEGMENT
- 3 LANDSCAPE AREA, SEE 1710
- 4 1-1/2" TUBULAR STEEL RAIL (CS1)
- 5 1-1/2" TUBULAR STEEL POST
- 6 EDGE OF PEBBLE-TAN CONCRETE
- 7 45° WELD
- 8 METAL FINISHING METALS
- 9 ALL FINISH MATERIALS AND COMPONENTS SHALL BE MADE FROM STEEL TUBING
- 10 FINISH GRADE LANDSCAPE BED SHALL BE 2" BELOW ELEVATION OF CONCRETE
- 11 FINISH GRADE PEBBLE-TAN CONCRETE (CS1)
- 12 PLANTING SOIL MAT

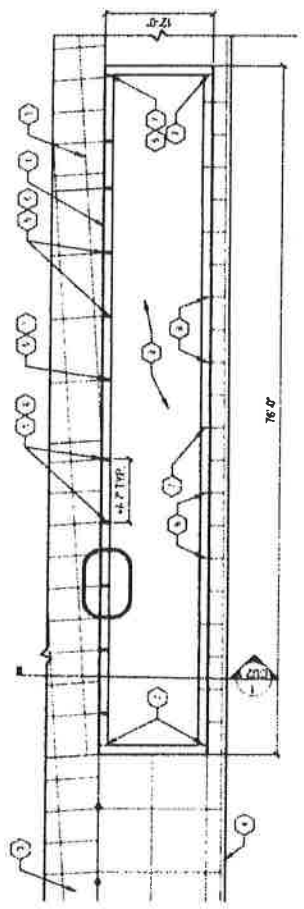


ALTERNATE NOS. 7A AND 7B
SCALE 1/4" = 1'

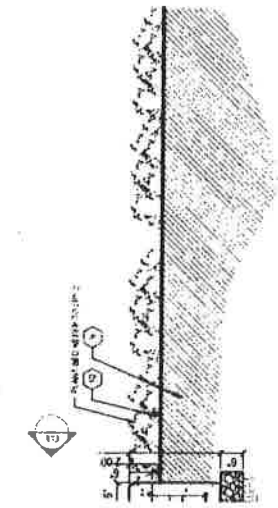


- 1 STRAIGHT SEGMENT
- 2 CORNER SEGMENT
- 3 LANDSCAPE AREA (CS1)
- 4 1-1/2" TUBULAR STEEL RAIL
- 5 1-1/2" TUBULAR STEEL POST
- 6 POST FINISHED THROUGH PANEL CONTINUOUS WELD ON UNDERSIDE, GRIND WELD SMOOTH PRIOR TO PLANTING
- 7 STEEL CAP FOR STEEL RAILS AND PORTS AT ALL OPEN ENDS, CONTINUOUSLY FLEET WELD, GRIND SMOOTH PRIOR TO PLANTING
- 8 2" DRAINAGE HOLES DRILLED ON BOTTOM OF RAIL 24" O.C.
- 9 2" DIA. 1/2" GALVANIZED STEEL REINFORCED ROD WITH WASHERS AND NUTS 24" O.C. (PER POST)
- 10 45° WELD
- 11 FINISH GRADE LANDSCAPE BED SHALL BE 2" BELOW ELEVATION OF CONCRETE
- 12 FINISH GRADE PEBBLE-TAN CONCRETE (CS1)
- 13 PLANTING SOIL MAT

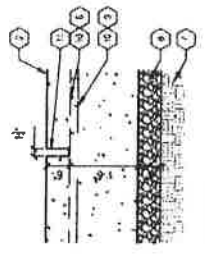
IN - ELEVATION
SCALE 1/4" = 1'



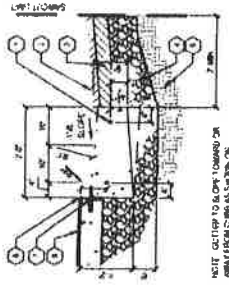
SCALE 1" = 2'-0"



ELEVATION



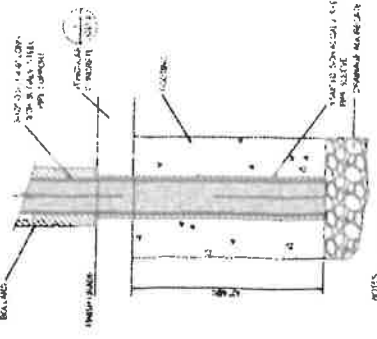
SCALE 1/4" = 1'-0"



NOTE: CUTTER TO BOLT/TORUS ON REAR FROM CURB AS SHOWN ON CONCRETE PLAN.

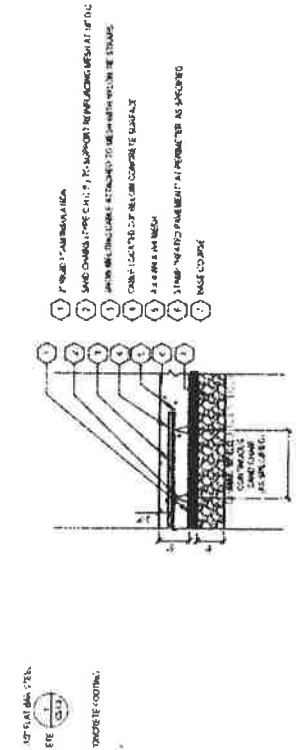
3 MOUNTABLE CURB
SCALE 1/4" = 1'-0"

- 1 REINFORCING BARS
- 2 REINFORCING BARS
- 3 REINFORCING BARS
- 4 REINFORCING BARS
- 5 REINFORCING BARS
- 6 REINFORCING BARS
- 7 REINFORCING BARS
- 8 REINFORCING BARS



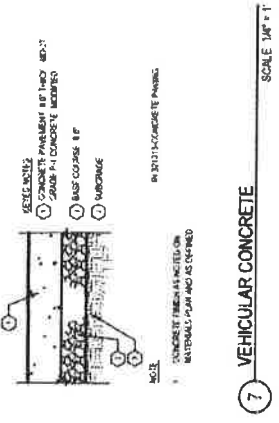
NOTE: 1. BOLLARD TO BE COMPLETELY MANUFACTURED BY MANUFACTURER OF CURB.

4 REMOVABLE BOLLARD
SCALE 1/4" = 1'-0"



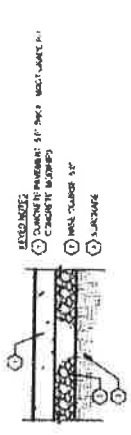
5 HEATED PEDESTRIAN CONCRETE PAVEMENT
SCALE 1/4" = 1'-0"

- 1 2" REINFORCING BARS
- 2 SAND CHANNEL TYPE CURB
- 3 2" SAND CHANNEL TYPE CURB
- 4 2" SAND CHANNEL TYPE CURB
- 5 2" SAND CHANNEL TYPE CURB
- 6 2" SAND CHANNEL TYPE CURB
- 7 2" SAND CHANNEL TYPE CURB



7 VEHICULAR CONCRETE
SCALE 1/4" = 1'-0"

- 1 CONCRETE PAVEMENT 8" THICK
- 2 2" SAND CHANNEL TYPE CURB
- 3 2" SAND CHANNEL TYPE CURB
- 4 2" SAND CHANNEL TYPE CURB



8 PEDESTRIAN CONCRETE
SCALE 1/4" = 1'-0"

- 1 CONCRETE PAVEMENT 8" THICK
- 2 2" SAND CHANNEL TYPE CURB
- 3 2" SAND CHANNEL TYPE CURB
- 4 2" SAND CHANNEL TYPE CURB

2017-07-11

1683

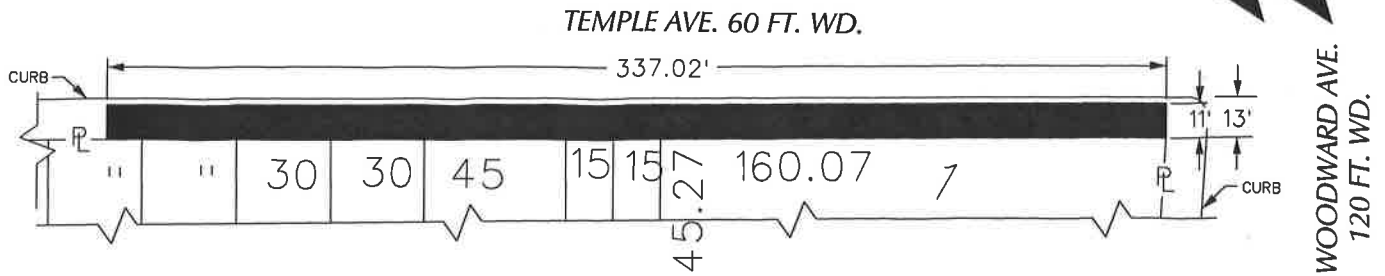
1683

*Petition of Wayne State University,
request for permanent construction
within the Temple street right-of-way
and permanent construction within the
City of Detroit water main easement
along Woodward Avenue.*

REFERRED TO THE FOLLOWING DEPARTMENT(S)

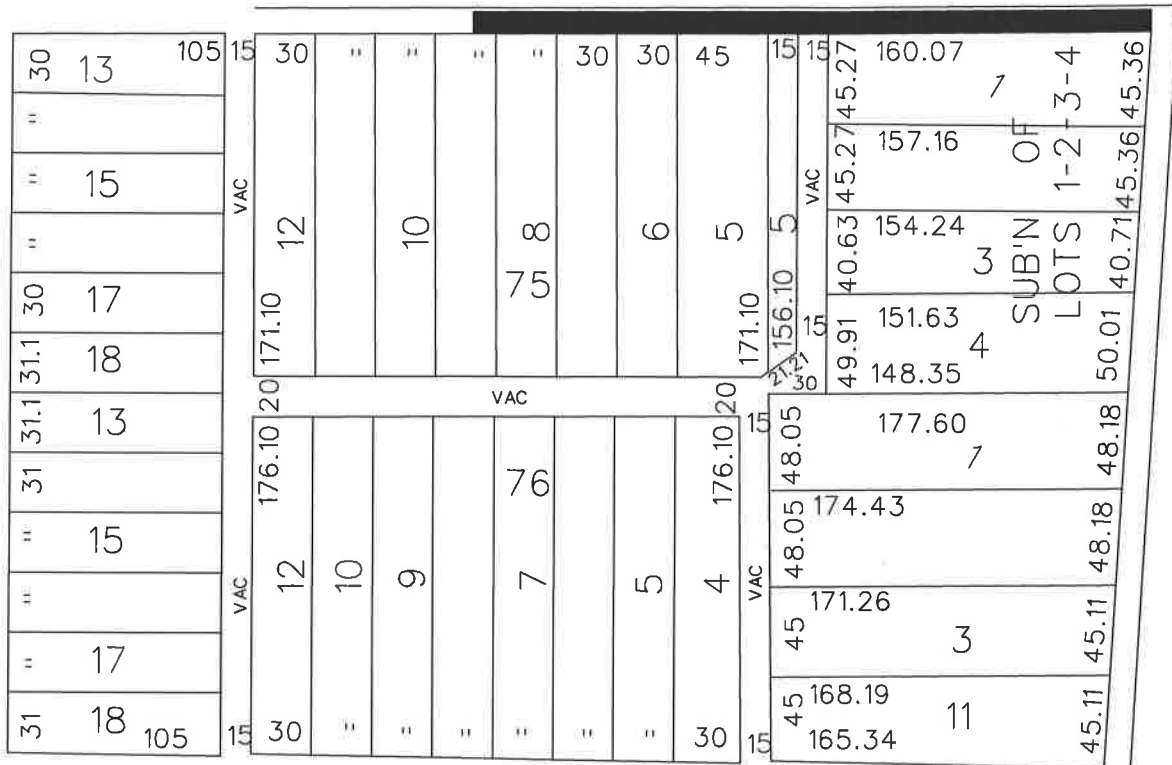
PLANNING AND DEVELOPMENT DEPARTMENT DPW -
CITY ENGINEERING DIVISION

PETITION NO. 1683
 WAYNE STATE UNIVERSITY
 5454 CASS AVE.
 DETROIT, MICHIGAN 48202
 C/O HARRY E. WYATT JR.
 PHONE NO. 313 577-4301



TEMPLE AVE. 60 FT. WD.

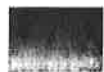
PARK AVE. 60 FT. WD.



SPROAT ST. 50 FT. WD.

EASEMENT

WOODWARD AVE. 120 FT. WD.



- REQUEST ENCROACHMENT
 (With Planters, Trees, Shrubs, Railings, Bike Racks,
 Street Lights, Removable Bollards, Pole w/Blue Light
 Security Phone, Cameras and Warning Strip)

(FOR OFFICE USE ONLY)

CARTO 29 E

B					REQUEST ENCROACHMENT INTO TEMPLE AT 2771 WOODWARD AVE. (With Planters, Trees, Shrubs, Railings, Bike Racks, Street Lights, Removable Bollards, Pole w/Blue Light Security Phone, Cameras and Warning Strip)	CITY OF DETROIT CITY ENGINEERING DEPARTMENT SURVEY BUREAU
	A					
DESCRIPTION		DRWN	CHKD	APPD	DATE	JOB NO. 01-01
REVISIONS						
DRAWN BY WLW		CHECKED				DRWG. NO. X 1683
DATE 01-03-18		APPROVED				