

City of Detroit

OFFICE OF THE CITY CLERK

Janice M. Winfrey
City Clerk

Vivian A. Hudson
Deputy City Clerk

DEPARTMENTAL REFERENCE COMMUNICATION

Tuesday, July 11, 2017

To: The Department or Commission Listed Below

From: Janice M. Winfrey, Detroit City Clerk

The following petition is herewith referred to you for report and recommendation to the City Council.

In accordance with that body's directive, kindly return the same with your report in duplicate within four (4) weeks.

PLANNING AND DEVELOPMENT DEPARTMENT DPW - CITY ENGINEERING DIVISION

1683 *Wayne State University, request for permanent construction within the Temple street right-of-way and permanent construction within the City of Detroit water main easement along Woodward Avenue.*

The Honorable City Council
Attn: Office of the City Clerk
Coleman A. Young Municipal Center
2 Woodward Avenue, Suite 200
Detroit, MI 48226

RE: **Wayne State University-Mike Ilitch School of Business (MISB) Petition Request Information**
Project Address: 2771 Woodward Avenue, Detroit, Michigan 48201

The petition request is for permanent construction within the Temple Street right-of-way and permanent construction within the City of Detroit water main easement along Woodward Avenue. The WSU MISB project is located at the southwest corner of Temple Street and Woodward.

The intent of this narrative is to begin the petition request process for construction within the right-of-way and water main easement noted above.

Because of WSU's status as a State University, State of Michigan guidelines and inspectors govern WSU development projects (this applies *only* to work outside the ROW and easement). Therefore, construction within WSU property limits will not be going through typical BSEED review, as the State of Michigan is the Authority Having Jurisdiction (AHJ) for the project.

WSU understands that construction within City of Detroit rights-of-way and easements requires City review. Proposed ROW and easement construction elements are outlined below. The format of this narrative follows City of Detroit document titled "City Council Petition Request Instructions" which requires answers to "who, what, when, where, and why." Please see below.

Who:

- Wayne State University
Harry E. Wyatt, Jr.
Associate Vice President
Facilities Planning & Management
313-577-4301
harry.wyatt@wayne.edu

Where and What:

Temple Ave. ROW (Area between Temple Ave. ROW and Temple Curb). Construction of the following items is proposed:

- Planters, trees, shrubs
- Temple Curbs, pavement (pedestrian and vehicular), railings
- Bike racks between planters
- District street lights
- Removable bollards
- Pole with blue light, security phone, and cameras
- Detectable warning strip

Woodward Ave. water main easement (Area between DWSD Utility Easement and Woodward Right of Way). Construction of the following items is proposed.

- Storm pipes, storm manhole structure, water main line and gate valve and box
- Canopy encroachments at the DWSD easement on Woodward
- District street lights
- Pavement (pedestrian and heated pedestrian concrete)
- Frost slabs

When:

Construction of elements in the right-of-way and easement is anticipated to begin around October 1, 2017

Why:

The Mike Ilitch School of Business will be an integral part of the District Detroit. Because it is located just north of the new Little Caesars Arena, the streetscape near the WSU MISB will be consistent with the patterns and site language defined by the arena. The work in the ROW and water main easement will enhance the pedestrian experience. Proposed vegetated planters foster an inviting streetscape and aesthetic backdrop as they improve air quality and help capture rain events to ease sewer demands. Overhead shade trees follow suit as they lower surface temperatures on hot summer days. The result is a robust urban environment that becomes a local and regional attraction, catalyzing new business development and defining a cultural sense of place.

TEMPLE AVENUE (60 FT. WD.)

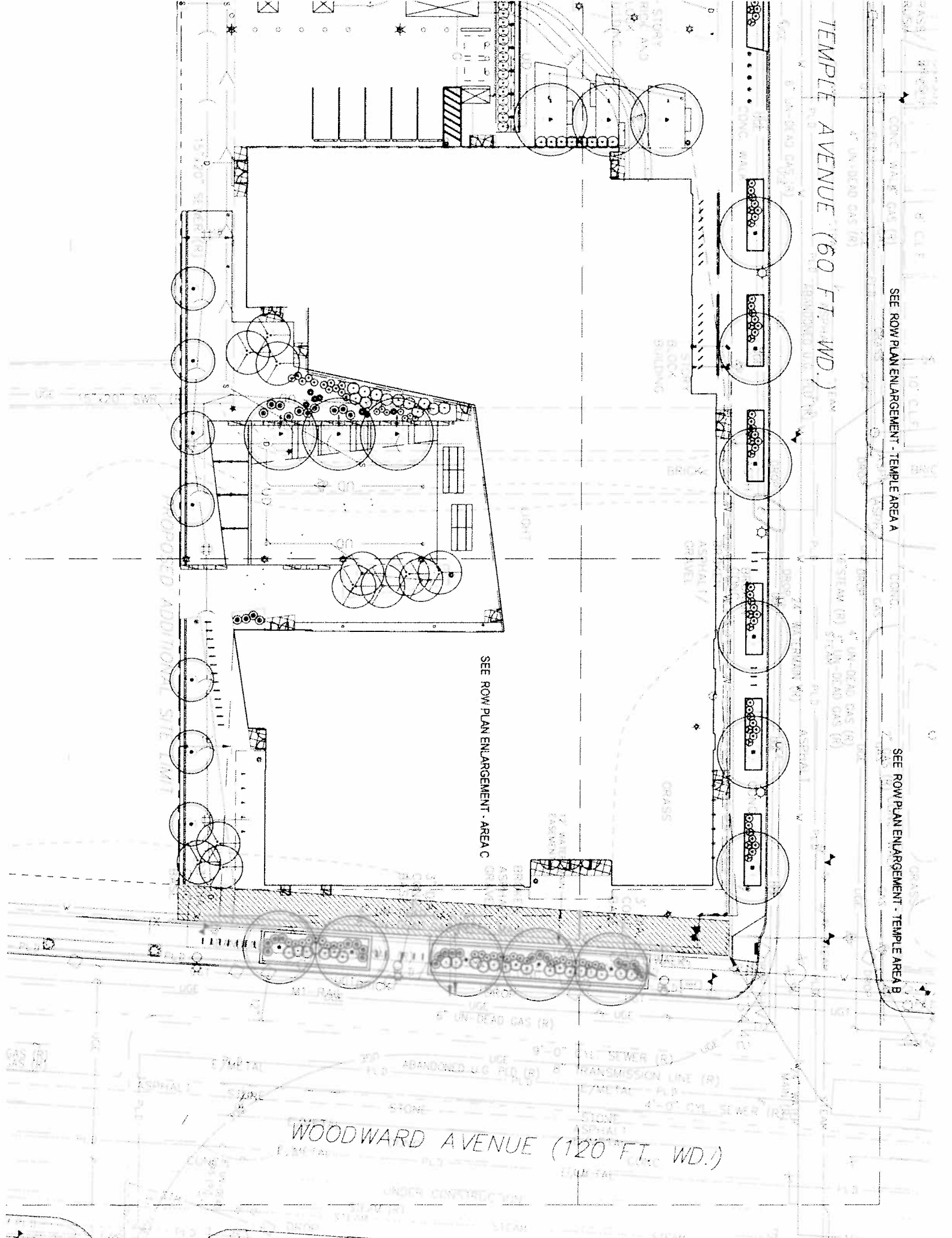
SEE ROW PLAN ENLARGEMENT - TEMPLE AREA A

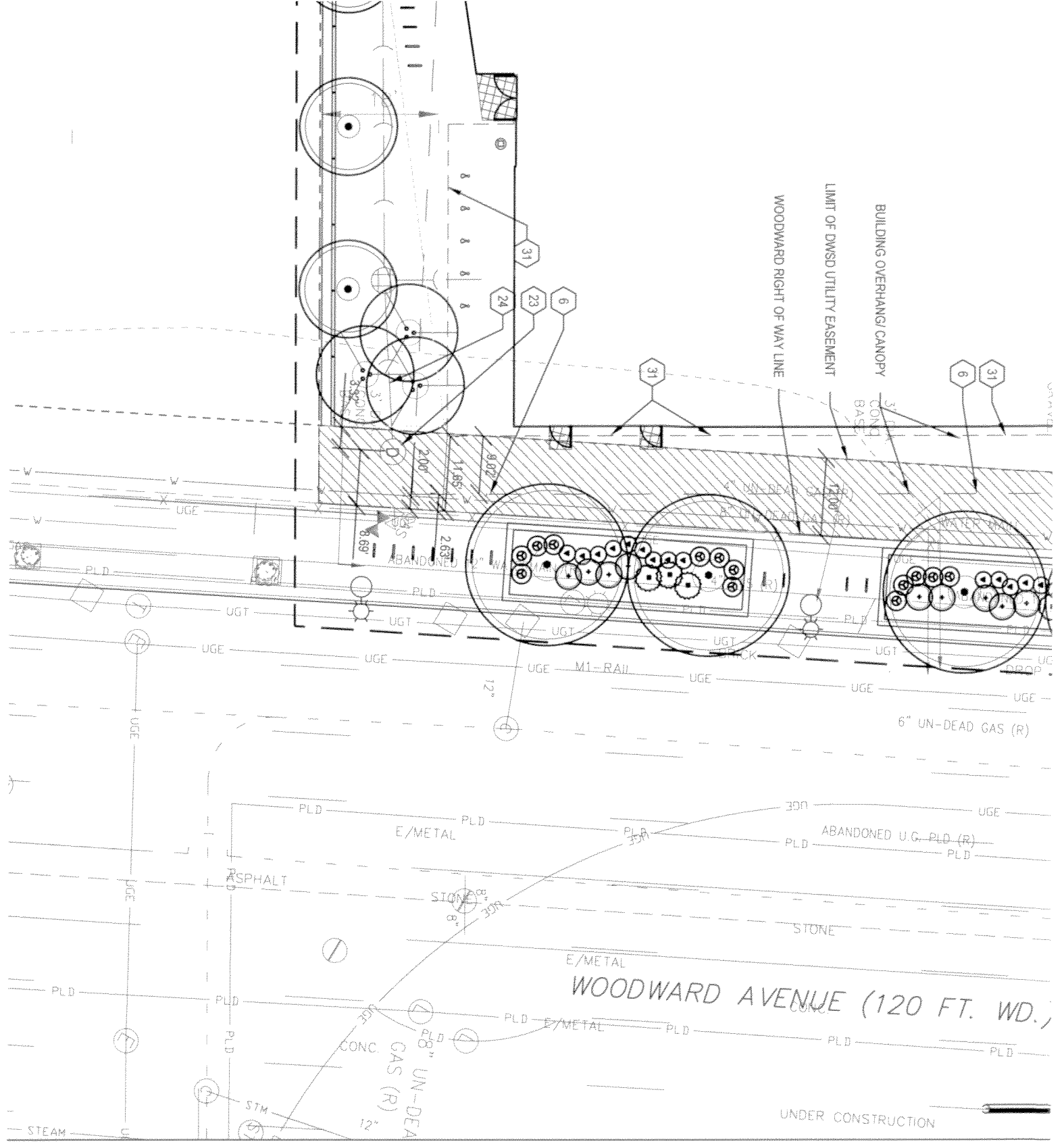
SEE ROW PLAN ENLARGEMENT - TEMPLE AREA B

SEE ROW PLAN ENLARGEMENT - AREA C

PROPOSED ADDITIONAL SITE LIMIT

WOODWARD AVENUE (120 FT. WD.)

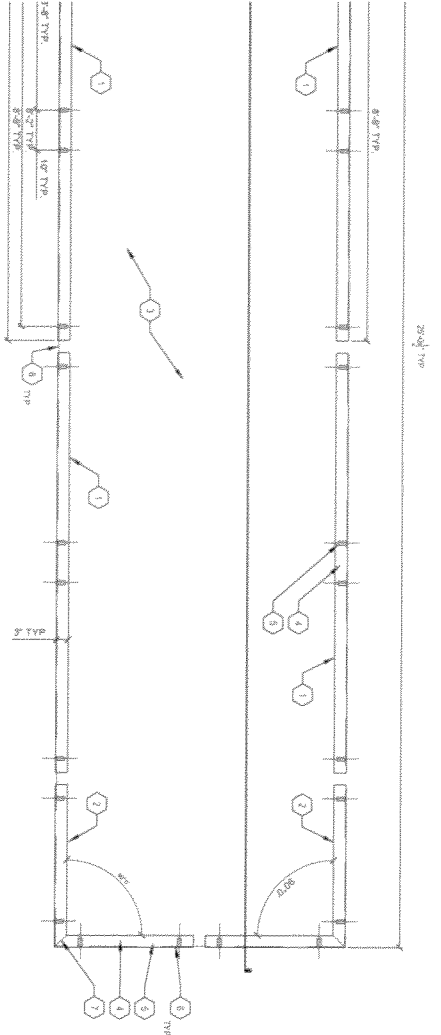




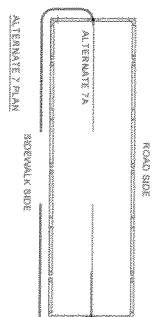
	WOODWARD AVENUE CURBSIDE
	MOUNTABLE CURB C2.1
	TEMPLE CURB
	WOODWARD CURB
	HIGH CANOPY (EXTENDING F ROOF ABOVE 4TH FLOOR
	DETECTABLE WARNING STRIP REFER TO MDOT R-28-J
	FROST SLAB, SEE 16/S2.2.1
	BICYCLE SCREEN
	PEDESTRIAN LIGHT, SEE 4/E7
	REMOVEABLE BOLLARD C
	BIKE RACK C2.1
	EXISTING DISTRICT STREET L
	NEW DISTRICT STREET LIGHT
	SERVICE AREA LIGHT
	TEMPLE STREET CURB
	BLUE LIGHT EMERGENCY POI
	TREE UPRIGHT
	WATER SERVICE
	3" GATE VALVE AND BOX
	CASING PIPE SECTION C2.2
	PROTECT EXISTING FIRE HYD
	STORM MANHOLE C2.2
	STORM PIPE
	TREE
	SHRUBS
	12" WIDE WATER MAIN EASEM
	HEATED PEDESTRIAN CONCRETE PAVEMENT

- 1 STRAIGHT SEGMENT
- 2 CORNER SEGMENT
- 3 LANDSCAPE AREA
- 4 1 1/2" X 7" TUBULAR STEEL POST
- 5 1" X 7" TUBULAR STEEL POST
- 6 EDGE OF PEDIESTAL CONCRETE
- 7 45° WELD
- 8 METAL BRACKETS
- 9 REINFORCING BARS AND CONCRETE SHALL BE MADE FROM STEEL REBARING
- 10 FINISH SHALL BE SHOP PAINTED WITH INDUSTRIAL GRADE HIGH PERFORMANCE PRIMER AND TOP COATING
- 11 ALTERNATE 7A TO REMOVE BALUNES ALONG SIDEWALK SIDE OF COURTYARD ONLY (SEE REDUCTION)
- 12 ALTERNATE 7B TO REMOVE BALUNES FROM SCOPE OF PROJECT

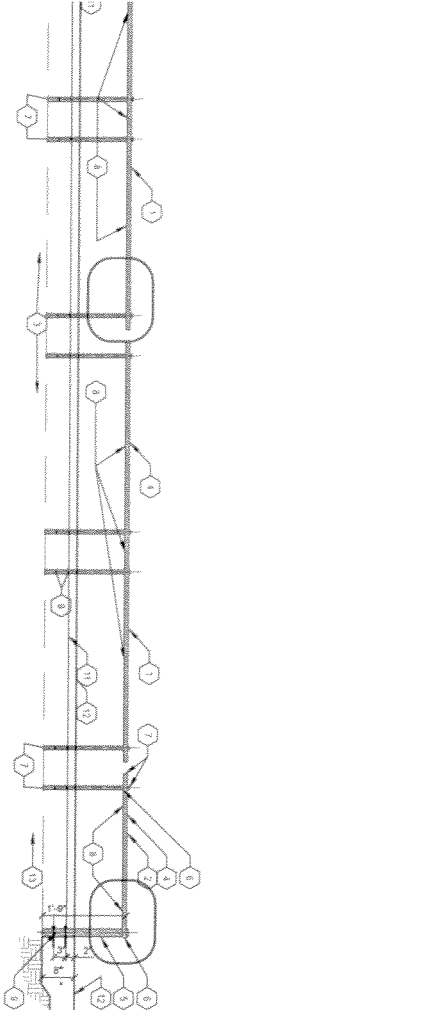
ENTRY COURTYARD
SCALE: 1/4" = 1'



- 1 STRAIGHT SEGMENT
- 2 CORNER SEGMENT
- 3 LANDSCAPE AREA SEE (P. 6)
- 4 1 1/2" X 7" TUBULAR STEEL POST (CS13)
- 5 1" X 7" TUBULAR STEEL POST
- 6 EDGE OF PEDIESTAL CONCRETE
- 7 45° WELD
- 8 METAL BRACKETS
- 9 REINFORCING BARS AND CONCRETE SHALL BE MADE FROM STEEL REBARING
- 10 FINISH SHALL BE SHOP PAINTED WITH INDUSTRIAL GRADE HIGH PERFORMANCE PRIMER AND TOP COATING
- 11 ALTERNATE 7A TO REMOVE BALUNES ALONG SIDEWALK SIDE OF COURTYARD ONLY (SEE REDUCTION)
- 12 ALTERNATE 7B TO REMOVE BALUNES FROM SCOPE OF PROJECT



ALTERNATE NOS. 7A AND 7B
SCALE: 1/4" = 1'



- 1 STRAIGHT SEGMENT
- 2 CORNER SEGMENT
- 3 LANDSCAPE AREA (CS13)
- 4 1 1/2" X 7" TUBULAR STEEL POST
- 5 1" X 7" TUBULAR STEEL POST
- 6 POST FINISHED THROUGH RAIL & CONTINUOUS WELD ON UNDERSIDE. GRIND WELD SMOOTH FINISH TO ALL FINISHES.
- 7 STEEL CAP FOR STEEL RAIL AND POSTS AT ALL OPEN ENDS. CONTINUOUSLY FILET WELD. GRIND SMOOTH FINISH TO GALVANIZING.
- 8 1" BRASSURE HOLES DRILLED ON BOTTOM OF RAIL AT O.C.
- 9 1" DIA. X 8" GALVANIZED STEEL THREADED ROD WITH WASHERS AND NUTS AT O.C. (2 PER POST)
- 10 NEOPRENE WASHER BETWEEN POST AND CONCRETE
- 11 FINISH GRADE LANDSCAPE BED SHALL BE 7" BET. ON ELEVATION OF CONCRETE
- 12 FINISH GRADE FINISH FROM CONCRETE (CS13)
- 13 PLANTING SOIL MIX (CS13)

N - ELEVATION
SCALE: 1/4" = 1'

SCALE: 1/4" = 1'

2017-07-11

1683

1683 *Petition of Wayne State University,
request for permanent construction
within the Temple street right-of-way
and permanent construction within the
City of Detroit water main easement
along Woodward Avenue.*

REFERRED TO THE FOLLOWING DEPARTMENT(S)

PLANNING AND DEVELOPMENT DEPARTMENT DPW -
CITY ENGINEERING DIVISION