

The Honorable City Council
Attn: Office of the City Clerk
Coleman A. Young Municipal Center
2 Woodward Avenue, Suite 200
Detroit, MI 48226

**RE: Wayne State University-Mike Ilitch School of Business (MISB) Petition Request Information
Project Address: 2771 Woodward Avenue, Detroit, Michigan 48201**

The petition request is for permanent construction within the Temple Street right-of-way and permanent construction within the City of Detroit water main easement along Woodward Avenue. The WSU MISB project is located at the southwest corner of Temple Street and Woodward.

The intent of this narrative is to begin the petition request process for construction within the right-of-way and water main easement noted above.

Because of WSU's status as a State University, State of Michigan guidelines and inspectors govern WSU development projects (this applies *only* to work outside the ROW and easement). Therefore, construction within WSU property limits will not be going through typical BSEED review, as the State of Michigan is the Authority Having Jurisdiction (AHJ) for the project.

WSU understands that construction within City of Detroit rights-of-way and easements requires City review. Proposed ROW and easement construction elements are outlined below. The format of this narrative follows City of Detroit document titled "City Council Petition Request Instructions" which requires answers to "who, what, when, where, and why." Please see below.

Who:

- Wayne State University
Harry E. Wyatt, Jr.
Associate Vice President
Facilities Planning & Management
313-577-4301
harry.wyatt@wayne.edu

Where and What:

Temple Ave. ROW (Area between Temple Ave. ROW and Temple Curb). Construction of the following items is proposed:

- Planters, trees, shrubs
- Temple Curbs, pavement (pedestrian and vehicular), railings
- Bike racks between planters
- District street lights

- Removable bollards
- Pole with blue light, security phone, and cameras
- Detectable warning strip

Woodward Ave. water main easement (Area between DWSD Utility Easement and Woodward Right of Way). Construction of the following items is proposed.

- Storm pipes, storm manhole structure, water main line and gate valve and box
- Canopy encroachments at the DWSD easement on Woodward
- District street lights
- Pavement (pedestrian and heated pedestrian concrete)
- Frost slabs

When:

Construction of elements in the right-of-way and easement is anticipated to begin around October 1, 2017

Why:

The Mike Ilitch School of Business will be an integral part of the District Detroit. Because it is located just north of the new Little Caesars Arena, the streetscape near the WSU MISB will be consistent with the patterns and site language defined by the arena. The work in the ROW and water main easement will enhance the pedestrian experience. Proposed vegetated planters foster an inviting streetscape and aesthetic backdrop as they improve air quality and help capture rain events to ease sewer demands. Overhead shade trees follow suit as they lower surface temperatures on hot summer days. The result is a robust urban environment that becomes a local and regional attraction, catalyzing new business development and defining a cultural sense of place.



Mike Ilitch
School of Business

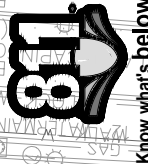
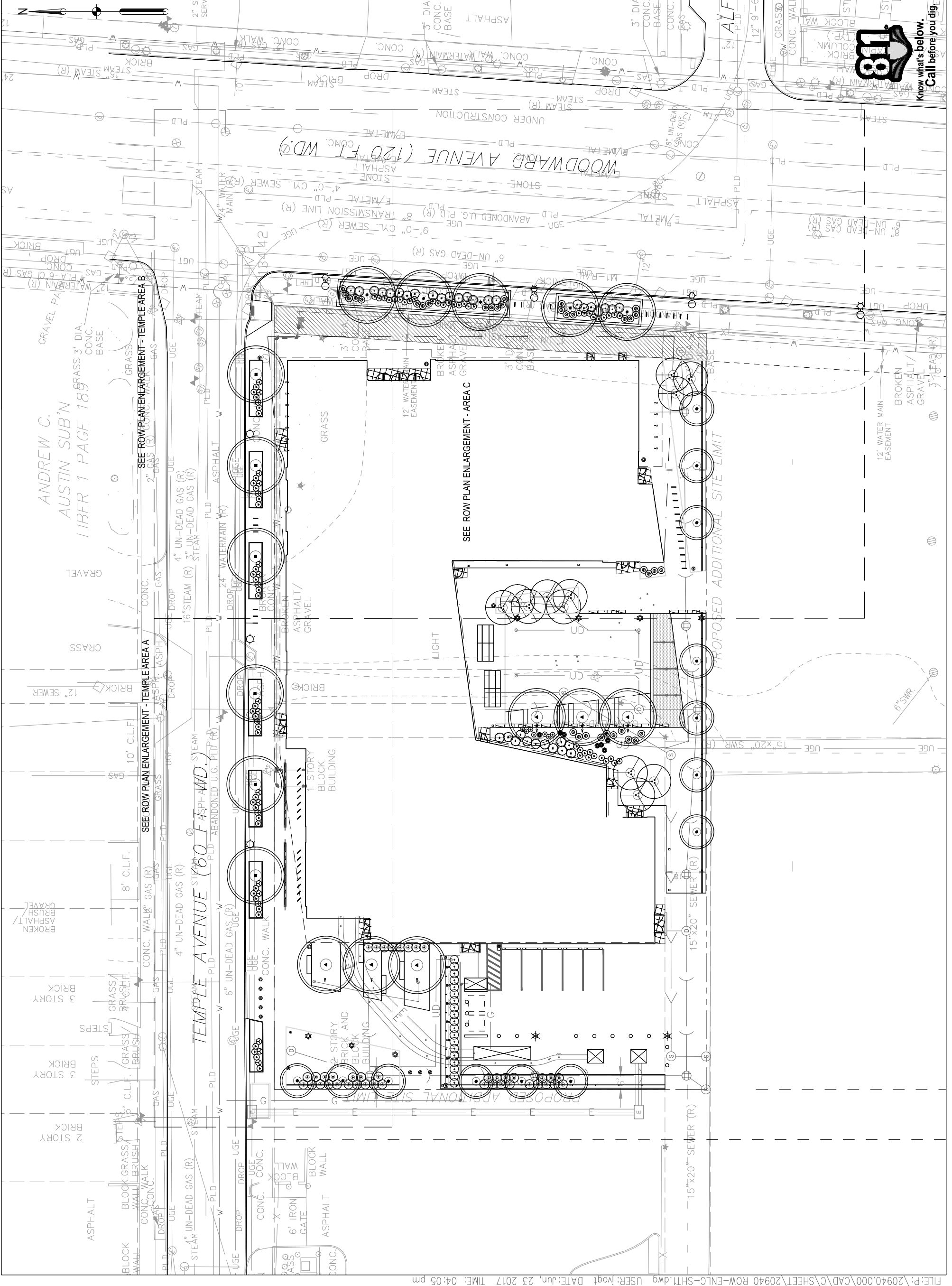
WAYNE STATE UNIVERSITY
MIKE ILITCH SCHOOL OF BUSINESS
2771 WOODWARD AVENUE
DETROIT, MI 48201-3012

FACILITIES PLANNING & MANAGEMENT BUILDING
5454 CASS AVENUE
DETROIT, MI 48202-3646
313.577.4310
www.facilities.wayne.edu

SMITHGROUP JJR
201 DEPOT STREET
SECOND FLOOR
ANN ARBOR, MI 48104
734.662.4457
www.smithgroupjjr.com

ROW OVERALL PLAN

DRAWING TITLE	ROW OVERALL PLAN
ISSUED WITH	
DRAWING REFERENCE	0' 20' 40'
SCALE	
DRAWING SCALE	
DATE	06-20-2017
PROJECT NAME	WSU MISB
PROJECT NUMBER	20940.000
DRAWING NUMBER	C1.0



Know what's below.
Call before you dig.



Mike Ilitch
School of Business
 WAYNE STATE UNIVERSITY
 MIKE ILITCH SCHOOL OF BUSINESS
 2771 WOODWARD AVENUE
 DETROIT, MI 48201-3012

FACILITIES PLANNING & MANAGEMENT BUILDING
 5454 CASS AVENUE
 DETROIT, MI 48202-3646
 313.577.4310
 www.facilities.wayne.edu

SMITHGROUP JJR
 201 DEPOT STREET
 SECOND FLOOR
 ANN ARBOR, MI 48104
 734.662.4457
 www.smithgroupjjr.com

ROW PLAN
ENLARGEMENT -
TEMPLE AREA A

ISSUED WITH _____

DRAWING REFERENCE 0' 10' 20'
SCALE
 DRAWING SCALE

06-20-2017
 DATE

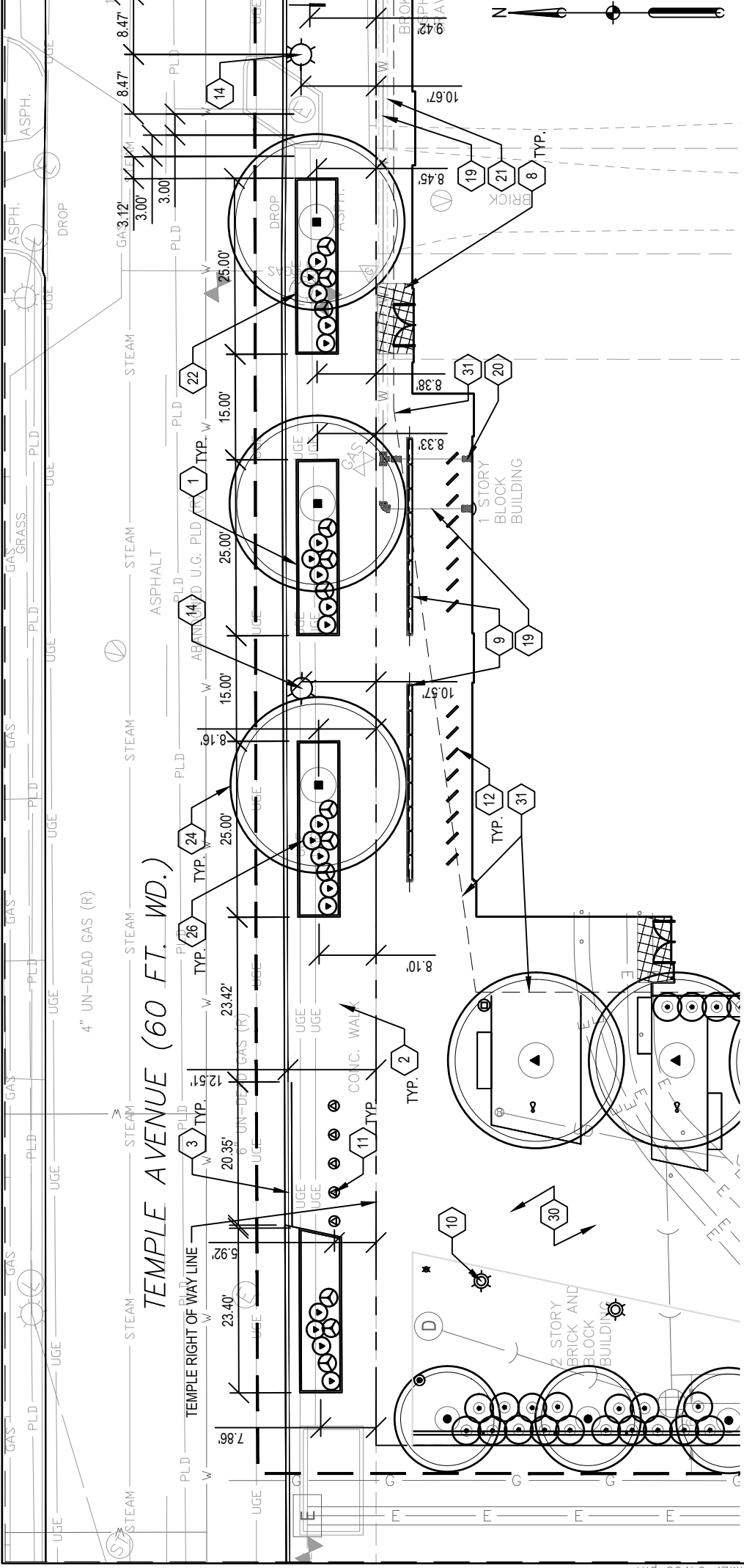
WSU MISB
 PROJECT NAME

20940.000
 PROJECT NUMBER

C1.1
 DRAWING NUMBER

KEYED NOTES

- 1 SITE CONSTRUCTION LIMITS
- 2 RIGHT OF WAY LINE
- 3 WATER EASEMENT LINE
- 4 TEMPLE STREET PLANTER C2.0
- 5 WOODWARD AVENUE PLANTER C2.1
- 6 MOUNTABLE CURB C2.1
- 7 TEMPLE CURB
- 8 WOODWARD CURB
- 9 HIGH CANOPY (EXTENDING FROM ROOF ABOVE 4TH FLOOR)
- 10 DETECTABLE WARNING STRIP, REFER TO MDOT R-28-J
- 11 FROST SLAB, SEE 16S2.2.1
- 12 BICYCLE SCREEN
- 13 PEDESTRIAN LIGHT, SEE 4/E7.0
- 14 REMOVEABLE BOLLARD C2.1
- 15 BIKE RACK C2.1
- 16 EXISTING DISTRICT STREET LIGHT
- 17 NEW DISTRICT STREET LIGHT
- 18 SERVICE AREA LIGHT
- 19 TEMPLE STREET CURB
- 20 BLUE LIGHT EMERGENCY POLE
- 21 TREE UPLIGHT
- 22 WATER SERVICE
- 23 3" GATE VALVE AND BOX C2.2
- 24 CASING PIPE SECTION C2.2
- 25 PROTECT EXISTING FIRE HYDRANT
- 26 STORM MANHOLE C2.2
- 27 STORM PIPE
- 28 TREE
- 29 SHRUBS
- 30 12' WIDE WATER MAIN EASEMENT
- 31 HEATED PEDESTRIAN CONCRETE PAVEMENT C2.1
- 32 PEDESTRIAN CONCRETE C2.1
- 33 VEHICULAR CONCRETE C2.1
- 34 LOW CANOPY (EXTENDS BETWEEN 1ST AND 2ND FLOORS)



Know what's below.
 Call before you dig.



Mike Ilitch
School of Business

WAYNE STATE UNIVERSITY
MIKE ILITCH SCHOOL OF BUSINESS
2771 WOODWARD AVENUE
DETROIT, MI 48201-3012

FACILITIES PLANNING & MANAGEMENT BUILDING
5454 CASS AVENUE
DETROIT, MI 48202-3646
313.577.4310
www.facilities.wayne.edu

SMITHGROUP JJR

201 DEPOT STREET
SECOND FLOOR
ANN ARBOR, MI 48104
734.662.4457
www.smithgroupjjr.com

**ROW PLAN
ENLARGEMENT -
TEMPLE AREA B**

DRAWING TITLE

ISSUED WITH

DRAWING REFERENCE

SCALE

DRAWING SCALE

06-20-2017

DATE

WSU MISB

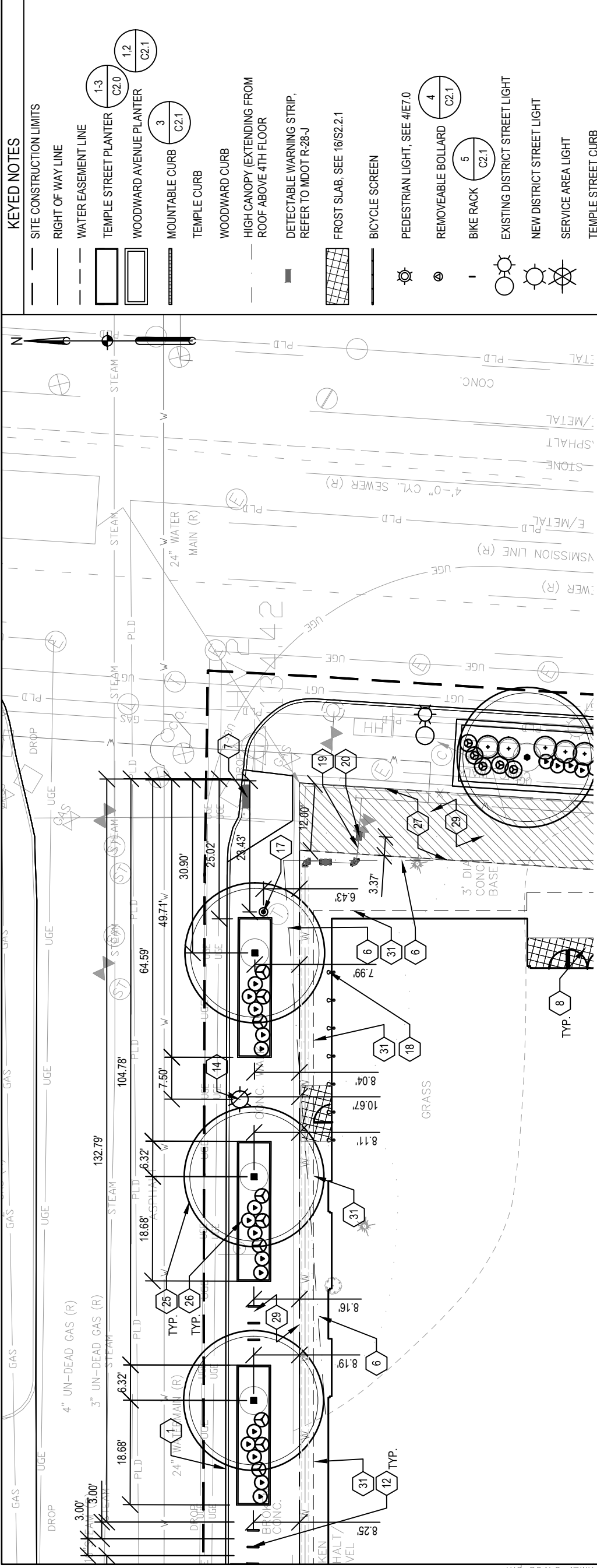
PROJECT NAME

20940.000

PROJECT NUMBER

C1.2

DRAWING NUMBER



KEYED NOTES

- SITE CONSTRUCTION LIMITS
- RIGHT OF WAY LINE
- WATER EASEMENT LINE
- 1-3 TEMPLE STREET PLANTER C2.0 C2.1
- WOODWARD AVENUE PLANTER 1.2 C2.1
- 3 MOUNTABLE CURB C2.1
- TEMPLE CURB
- WOODWARD CURB
- HIGH CANOPY (EXTENDING FROM ROOF ABOVE 4TH FLOOR)
- DETECTABLE WARNING STRIP, REFER TO MDOT R-28-J
- FROST SLAB, SEE 16/S2.2.1
- BICYCLE SCREEN
- PEDESTRIAN LIGHT, SEE 4/E7.0
- REMOVEABLE BOLLARD 4 C2.1
- BIKE RACK 5 C2.1
- EXISTING DISTRICT STREET LIGHT
- NEW DISTRICT STREET LIGHT
- SERVICE AREA LIGHT
- TEMPLE STREET CURB
- BLUE LIGHT EMERGENCY POLE
- TREE UPLIGHT
- WATER SERVICE
- 3" GATE VALVE AND BOX 1 C2.2
- CASING PIPE SECTION 3 C2.2
- PROTECT EXISTING FIRE HYDRANT
- STORM MANHOLE 2 C2.2
- STORM PIPE
- TREE
- SHRUBS
- 12' WIDE WATER MAIN EASEMENT
- HEATED PEDESTRIAN CONCRETE PAVEMENT 6 C2.1
- PEDESTRIAN CONCRETE 7 C2.1
- VEHICULAR CONCRETE 8 C2.1
- LOW CANOPY (EXTENDS BETWEEN 1ST AND 2ND FLOORS)



Know what's below.
Call before you dig.



Mike Ilitch
School of Business

WAYNE STATE UNIVERSITY
MIKE ILITCH SCHOOL OF BUSINESS
2771 WOODWARD AVENUE
DETROIT, MI 48201-3012

FACILITIES PLANNING & MANAGEMENT BUILDING
5454 CASS AVENUE
DETROIT, MI 48202-3646
313.577.4310
www.facilities.wayne.edu

SMITHGROUP JJR

201 DEPOT STREET
SECOND FLOOR
ANN ARBOR, MI 48104
734.662.4457
www.smithgroupjjr.com

ROW PLAN
ENLARGEMENT - AREA
C

DRAWING TITLE

ISSUED WITH

DRAWING REFERENCE 0' 10' 20'

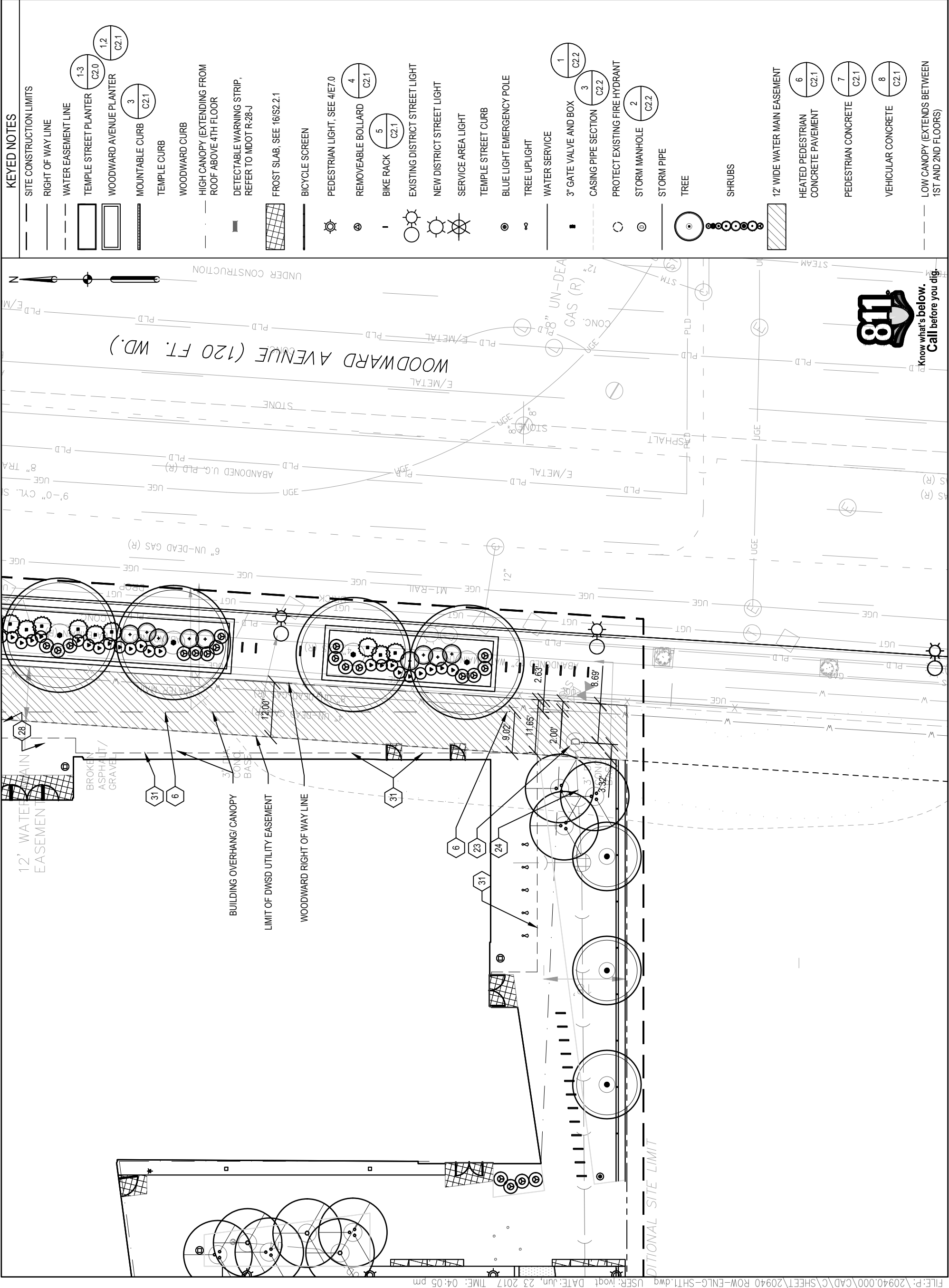
SCALE
DRAWING SCALE

06-20-2017
DATE

WSU MISB
PROJECT NAME

20940.000
PROJECT NUMBER

C1.3
DRAWING NUMBER



KEYED NOTES	
[Symbol]	SITE CONSTRUCTION LIMITS
[Symbol]	RIGHT OF WAY LINE
[Symbol]	WATER EASEMENT LINE
[Symbol]	TEMPLE STREET PLANTER (1-3 C2.0, 1.2 C2.1)
[Symbol]	WOODWARD AVENUE PLANTER (3 C2.1)
[Symbol]	MOUNTABLE CURB (3 C2.1)
[Symbol]	TEMPLE CURB
[Symbol]	WOODWARD CURB
[Symbol]	HIGH CANOPY (EXTENDING FROM ROOF ABOVE 4TH FLOOR)
[Symbol]	DETECTABLE WARNING STRIP, REFER TO MDOT R-28-J
[Symbol]	FROST SLAB, SEE 16/S2.2.1
[Symbol]	BICYCLE SCREEN
[Symbol]	PEDESTRIAN LIGHT, SEE 4/E7.0
[Symbol]	REMOVEABLE BOLLARD (4 C2.1)
[Symbol]	BIKE RACK (5 C2.1)
[Symbol]	EXISTING DISTRICT STREET LIGHT
[Symbol]	NEW DISTRICT STREET LIGHT
[Symbol]	SERVICE AREA LIGHT
[Symbol]	TEMPLE STREET CURB
[Symbol]	BLUE LIGHT EMERGENCY POLE
[Symbol]	TREE UPLIGHT
[Symbol]	WATER SERVICE
[Symbol]	3" GATE VALVE AND BOX (1 C2.2)
[Symbol]	CASING PIPE SECTION (3 C2.2)
[Symbol]	PROTECT EXISTING FIRE HYDRANT
[Symbol]	STORM MANHOLE (2 C2.2)
[Symbol]	STORM PIPE
[Symbol]	TREE
[Symbol]	SHRUBS
[Symbol]	12' WIDE WATER MAIN EASEMENT
[Symbol]	HEATED PEDESTRIAN CONCRETE PAVEMENT (6 C2.1)
[Symbol]	PEDESTRIAN CONCRETE (7 C2.1)
[Symbol]	VEHICULAR CONCRETE (8 C2.1)
[Symbol]	LOW CANOPY (EXTENDS BETWEEN 1ST AND 2ND FLOORS)



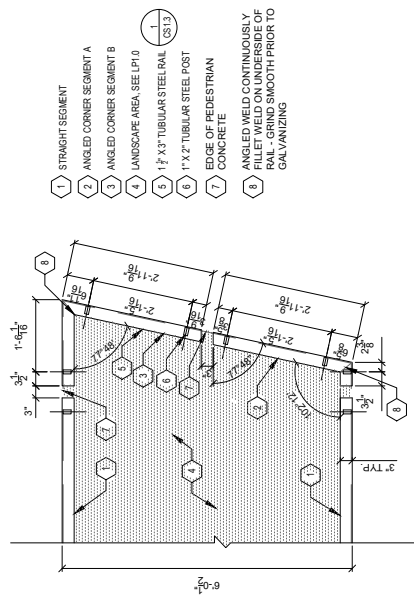
Mike Ilitch
School of Business
 WAYNE STATE UNIVERSITY
 MIKE ILITCH SCHOOL OF BUSINESS
 2771 WOODWARD AVENUE
 DETROIT, MI 48201-3012

FACILITIES PLANNING & MANAGEMENT BUILDING
 5454 CASS AVENUE
 DETROIT, MI 48202-3646
 313.577.4310
 www.facilities.wayne.edu

SMITHGROUP JJR
 201 DEPOT STREET
 SECOND FLOOR
 ANN ARBOR, MI 48104
 734.662.4457
 www.smithgroupjir.com

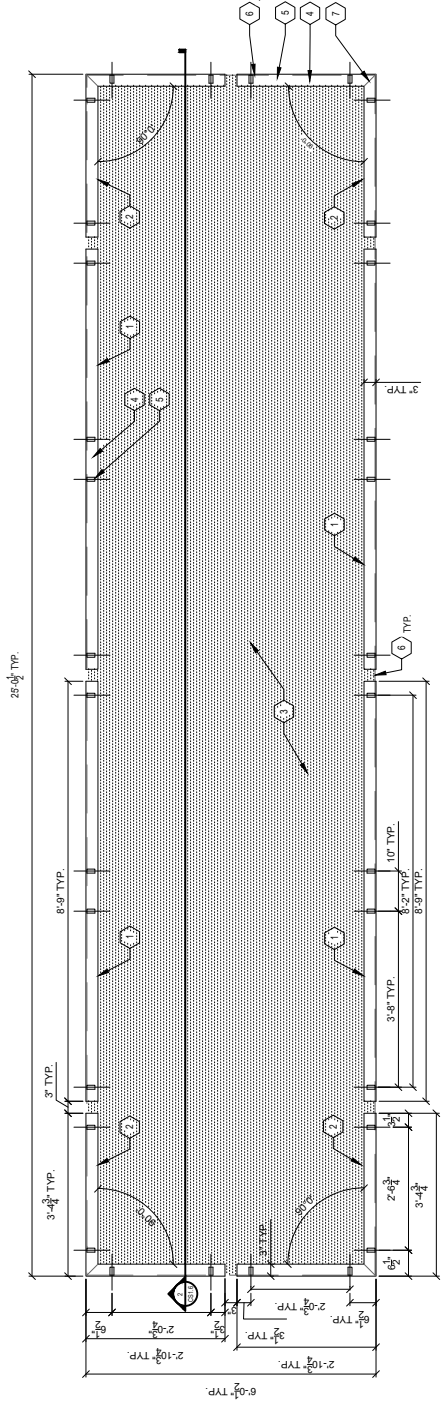
ROW DETAILS 1

DRAWING TITLE	ROW DETAILS 1
ISSUED WITH	
DRAWING REFERENCE	
SCALE AS NOTED	SCALE AS NOTED
DRAWING SCALE	
DATE	06-20-2017
PROJECT NAME	WSU MISB
PROJECT NUMBER	20940.000
DRAWING NUMBER	C2.0

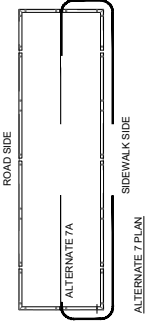


- 1 STRAIGHT SEGMENT
- 2 ANGLED CORNER SEGMENT A
- 3 ANGLED CORNER SEGMENT B
- 4 LANDSCAPE AREA, SEE LPI 0
- 5 1 1/2" X 3" TUBULAR STEEL RAIL (CS13)
- 6 1" X 2" TUBULAR STEEL POST
- 7 CONCRETE
- 8 ANGLED WELD CONTINUOUSLY FILET WELD ON UNDERSIDE OF RAIL - GRIND SMOOTH PRIOR TO GALVANIZING

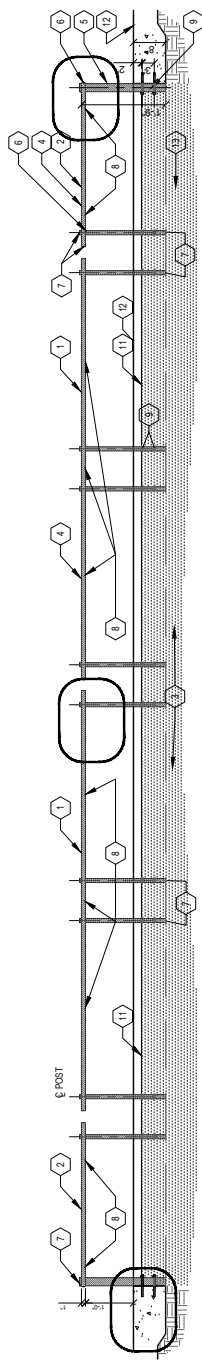
1 TEMPLE STREET PLANTER RAILING PLAN- ENTRY COURTYARD
 SCALE: 1/4" = 1'



- 1 STRAIGHT SEGMENT
 - 2 CORNER SEGMENT
 - 3 LANDSCAPE AREA, SEE LPI 0
 - 4 1 1/2" X 3" TUBULAR STEEL RAIL (CS13)
 - 5 1" X 2" TUBULAR STEEL POST
 - 6 EDGE OF PEDESTRIAN CONCRETE
 - 7 45° WELD
- METAL RAILING NOTES:
 ALL RAILING MATERIALS AND COMPONENTS SHALL BE MADE FROM STEEL TUBING.
 ALL RAILING MATERIALS SHALL BE GALVANIZED AND FINISH PAINTED.
 RAILING SHALL BE SHOP PAINTED WITH THREMG ENDOUR SHIELD.
 HIGH PERFORMANCE PRIMER AND TOP COATING.
- METAL RAILING ALTERNATE 7A, 7B:
 ALTERNATE 7A TO INCLUDE RAILINGS ALONG SIDEWALK SIDE OF PLANTER ONLY (85% REDUCTION)
 ALTERNATE 7B TO REMOVE RAILINGS FROM SCOPE OF PROJECT.



2 TEMPLE STREET PLANTER RAILING PLAN - ALTERNATE NOS. 7A AND 7B
 SCALE: 1/4" = 1'



- 1 STRAIGHT SEGMENT
- 2 CORNER SEGMENT
- 3 LANDSCAPE AREA (CS13)
- 4 1 1/2" X 3" TUBULAR STEEL RAIL
- 5 1" X 2" TUBULAR STEEL POST
- 6 POST FRAMED THROUGH RAIL & CONTINUOUS WELD ON UNDERSIDE. GRIND WELD SMOOTH PRIOR TO GALVANIZING
- 7 STEEL CAP FOR STEEL RAILS AND POSTS AT ALL OPEN ENDS, CONTINUOUSLY FILET WELD. GRIND SMOOTH PRIOR TO GALVANIZING
- 8 2" DRAINAGE HOLES DRILLED ON BOTTOM OF RAIL 24" O.C.
- 9 7/8" DIA. X 8" GALVANIZED STEEL THREADED ROD WITH WASHERS AND NUTS, 24" O.C. PER POST. DRILLED AND INSTALLED WITH EPOXY
- 10 NEOPRENE WASHER BETWEEN POST AND CONCRETE
- 11 FINISH GRADE. LANDSCAPE BED SHALL BE 2" BELOW ELEVATION OF CONCRETE
- 12 FINISH GRADE PEDESTRIAN CONCRETE (CS13)
- 13 PLANTING SOIL MIX

3 TEMPLE STREET PLANTER RAILING SECTION - ELEVATION
 SCALE: 1/4" = 1'



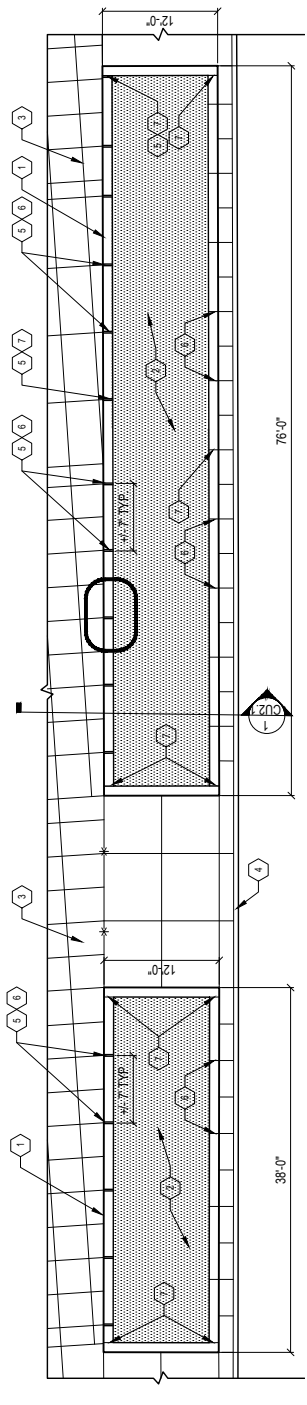
Mike Ilitch
School of Business
 WAYNE STATE UNIVERSITY
MIKE ILITCH SCHOOL OF BUSINESS
 2771 WOODWARD AVENUE
 DETROIT, MI 48201-3012

FACILITIES PLANNING & MANAGEMENT BUILDING
 5454 CASS AVENUE
 DETROIT, MI 48202-3646
 313.577.4310
 www.facilities.wayne.edu

SMITHGROUP JJR
 201 DEPOT STREET
 SECOND FLOOR
 ANN ARBOR, MI 48104
 734.662.4457
 www.smithgroupjjr.com

- 1 WOODWARD AVENUE PLANTER CURB (CS.19)
- 2 PLANT BED, SEE LPI 10
- 3 PEDESTRIAN CONCRETE (CS.13)
- 4 WOODWARD AVENUE CURB
- 5 1" DRAINAGE GAP ALIGNED WITH PEDESTRIAN CONTROL JOINT
- 6 CONSTRUCTION JOINT ALIGNED WITH PEDESTRIAN CONCRETE JOINTS, APX. 7' O.C.
- 7 EXPANSION JOINT

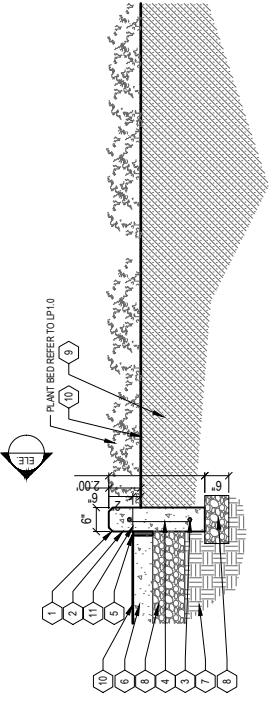
NOTE: EXPANSION JOINT ELEVATION OF DRAINAGE GAP TO MATCH ELEVATION OF PEDESTRIAN CONCRETE



1 WOODWARD AVENUE PLANTER CURB PLAN
 SCALE: 1" = 20'

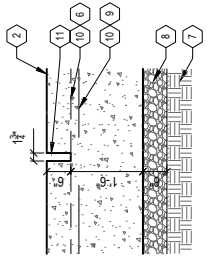
- 1 1" CHAMFER (BOTH SIDES)
- 2 CONCRETE CURB, CAST IN PLACE, BROOM FINISH
- 3 #4 HORIZONTAL BARS @ 12" O.C.
- 4 #4 VERTICAL BARS @ 12" O.C.
- 5 EXPANSION JOINT (CS.13)
- 6 PEDESTRIAN CONCRETE (CS.13)
- 7 SUBGRADE
- 8 BASE COURSE
- 9 BISHWALE SOIL MIX
- 10 FINISH GRADE
- 11 DRAINAGE GAP

NOTES:
 PAINTING BED FINISHED GRADE TO BE 2" BELOW FINISH GRADE OF PEDESTRIAN CONCRETE



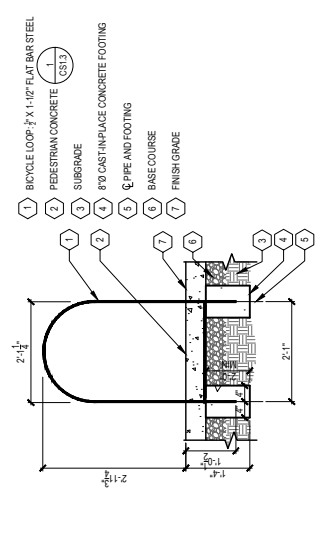
ELEVATION

- 1 PLANT BED (SEE LPI 10)
- 2 PEDESTRIAN CONCRETE (CS.13)
- 3 SUBGRADE
- 4 BASE COURSE
- 5 FINISH GRADE
- 6 PEDESTRIAN CONCRETE (CS.13)
- 7 SUBGRADE
- 8 BASE COURSE
- 9 FINISH GRADE
- 10 PEDESTRIAN CONCRETE (CS.13)
- 11 SUBGRADE

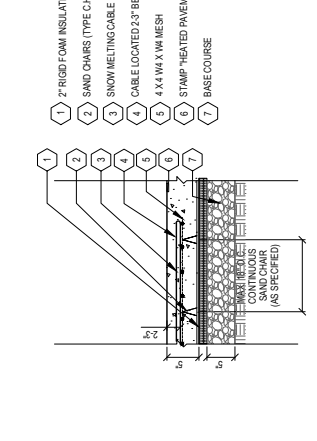


ELEVATION

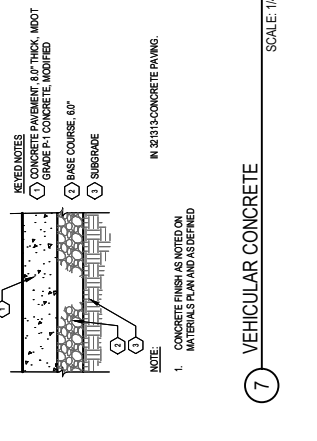
2 WOODWARD AVENUE PLANTER CURB SECTION
 SCALE: 1/4" = 1"



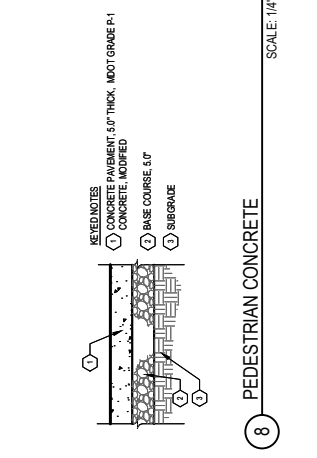
5 BIKE RACK
 SCALE: 1/4" = 1"



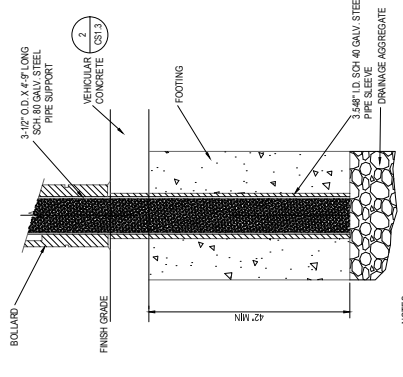
6 HEATED PEDESTRIAN CONCRETE PAVEMENT
 SCALE: 1/4" = 1"



7 VEHICULAR CONCRETE
 SCALE: 1/4" = 1"

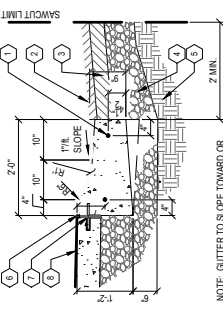


8 PEDESTRIAN CONCRETE
 SCALE: 1/4" = 1"



4 REMOVEABLE BOLLARD
 SCALE: 1/8" = 1"

- 1 #4 BAR CONTINUOUS
- 2 BITUMINOUS WEARING COURSE
- 3 BITUMINOUS LEVING COURSE
- 4 BASE COURSE
- 5 SUBGRADE
- 6 FINISH GRADE
- 7 EXPANSION JOINT (CS.13)
- 8 PEDESTRIAN CONCRETE (CS.13)



NOTE: GUTTER TO SLOPE TOWARD OR AWAY FROM CURB AS SHOWN ON GRADING PLAN.

3 MOUNTABLE CURB
 SCALE: 1/4" = 1"

ROW DETAILS 2

DRAWING TITLE	_____
ISSUED WITH	_____
DRAWING REFERENCE	_____
SCALE AS NOTED	_____
DRAWING SCALE	_____
DATE	06-20-2017
PROJECT NAME	WSU MISB
PROJECT NUMBER	20940.000
DRAWING NUMBER	C2.1

