

TO: City Engineering Division, DPW
2 Woodward Ave., Suite 642
Detroit, MI 48226-3462
Survey Bureau: 313-224-3970

Petition No. 1663

The proposed change in property (referred to above) would affect our services as follows:

- () Not Involved.
- () Involved; but asking you to hold action on this petition until further notice.
- () Involved; the nature of our services, and the estimated costs of removing and/or rerouting such services are:
- (X) Involved; have no objection to the requested encroachment various locations in the area bound by Sherwood, Huber, St. Cyril and Georgia rd. (with drive approach) as shown on drawing no. x1663 dated 12-20-2017 provided that 100% signatures of abutting property owners are secured.

Traffic Engineering Division - DPW
(Utility or City Department)

Ashok Patel
By

Sunny Jacob

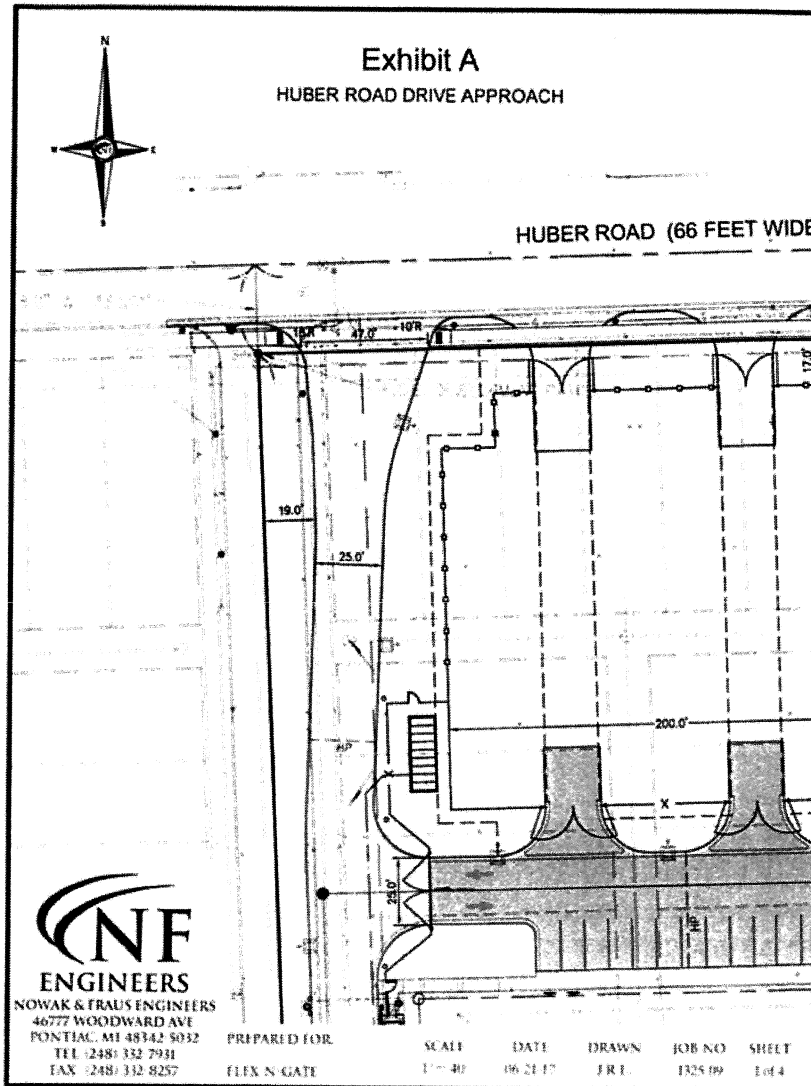
City Traffic Engineer
Title

December 20, 2017
Date

313 224-1610
Area code-Telephone number

MA/ma

PETITION NO. 1663
 FLEX-N-GATE
 NOWAK & FRAUS ENGINEERS
 46777 WOODWARD AVE.
 PONTIAC, MICHIGAN 48342
 C/O JASON R. LONGHURST
 PHONE NO. 248 332-7931



REQUEST ENCROACHMENT
 (With Drive Approach)

(FOR OFFICE USE ONLY)

CARTO 50 F

B						
A						
DESCRIPTION	DRWN	CHKD	APPD	DATE		
REVISIONS						
DRAWN BY	WLW	CHECKED				
DATE	12-20-17	APPROVED				

REQUEST ENCROACHMENT
 VARIOUS LOCATIONS
 IN THE AREA BOUND BY
 SHERWOOD, HUBER, ST. CYRIL
 AND GEORGIA RD.
 (With Drive Approach)

CITY OF DETROIT CITY ENGINEERING DEPARTMENT	
SURVEY BUREAU	
JOB NO.	01-01
DRWG. NO.	X 1663