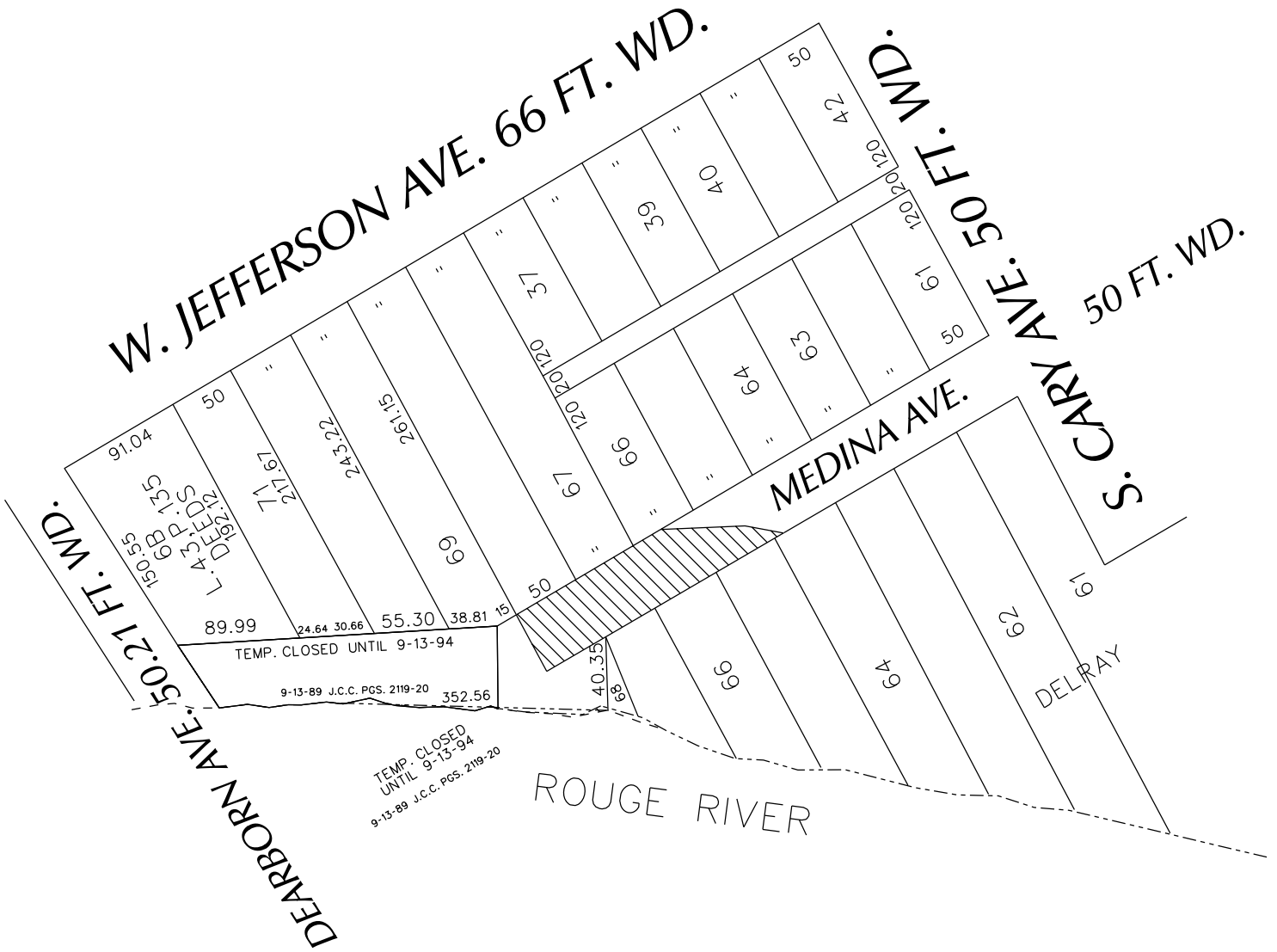


PETITION NO. 1659
 U.S. ENVIRONMENTAL PROTECTION AGENCY
 9311 GROH RD.
 GROSSE ILE., MICHIGAN 48138
 C/O JAMIE BEAVER
 PHONE NO. 971 409-2478



- AREA OF ENCROACHMENT

(FOR OFFICE USE ONLY)

CARTO 1 A & F

B					
A					
DESCRIPTION		DRWN	CHKD	APPD	DATE
REVISIONS					
DRAWN BY	WLW	CHECKED			
DATE	01-02-18	APPROVED			

REQUEST ENCROACHMENT
 INTO MEDINA
 AT 8150 MEDINA ST.
 (With Tiebacks and Deadmans)

CITY OF DETROIT CITY ENGINEERING DEPARTMENT SURVEY BUREAU	
JOB NO.	01-01
DRWG. NO.	X 1659