

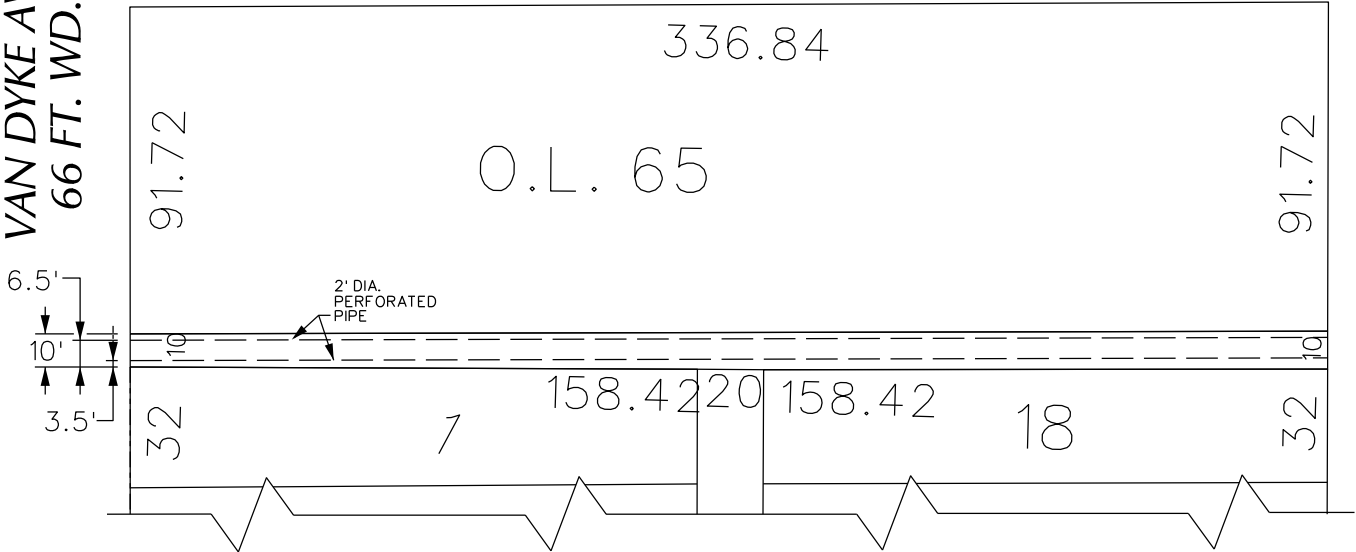
PETITION NO. 1622  
 ECOWORKS  
 C/O MANNIK SMITH GROUP  
 65 CADILLAC SQUARE, SUITE 3311  
 DETROIT, MICHIGAN 48226  
 C/O DAVID A. RYZYI P.E.  
 PHONE NO. 313 961-9500



VAN DYKE AVE.  
 66 FT. WD.

KERCHEVAL AVE. 80 FT. WD.

PARKER AVE. 66 FT. WD.



ST. PAUL AVE. 60 FT. WD.

VAN DYKE AVE. 66 FT. WD.

KERCHEVAL AVE. 80 FT. WD.

30.08	30	9	158.42	158.42	10	30.08	30
	7	7	HOGG		12		7
	5	5	SUB'N		14		5
	3	3			16		3
	30	7			18		30
32.42	32	9	158.42	158.42	10	32.42	32
	7	7	HART		12		7
	5	5	RESUB'N		14		5
	3	3			16		3
	32	7			18		32
91.72	336.84		0.L. 65		91.72		336.84

PARKER AVE. 66 FT. WD.



- CONVERSION TO EASEMENT

(FOR OFFICE USE ONLY)

CARTO 47 E

B					
A					
DESCRIPTION		DRWN	CHKD	APPD	DATE
REVISIONS					
DRAWN BY		CHECKED			
DATE		APPROVED			
09-22-17					

CONVERSION TO EASEMENT  
 THE EAST/WEST PUBLIC ALLEY, 10 FT. WD.  
 IN THE BLOCK BOUND BY  
 KERCHEVAL, PARKER, ST. PAUL  
 AND VAN DYKE AVE.

CITY OF DETROIT  
 CITY ENGINEERING DEPARTMENT  
 SURVEY BUREAU  
 JOB NO. 01-01  
 DRWG. NO. X 1622