

**DTE Energy – Gas Co.
Data Integrity and Technology
One Energy Plaza, 838-GO
City of Detroit, MI 48226**

August 7, 2017

Richard Doherty, CED DPW Head Engineer
City Engineering Division, DPW
2 Woodward Ave, Suite 642
Detroit, Michigan 48226-3462

**RE: Petition #1615: Request to Vacate to Easement the south portion of the north/south public alley, 17' wd.
in the block bound by Owen, Woodward Ave., Leicester Ct. and John R St.**

- Not involved. **See Remarks**
- Involved: but asking you to hold action on this petition until further notice.
- Involved but have no objection to the property change - - provided that an easement of the full width of the public right-of-way (street, alley or other public place) is reserved.
- Involved: the nature of our services, and the estimated costs of removing, rerouting or abandonment of such all gas mains and/or services

REMARKS:

**DTE Energy–Gas Company has no involvement, nor objection to Petition #1580 as mentioned above.
See enclosed strip print and attached notice of public hearing, for your use and information.**

**Please abide by Public Act 174, three (3) working days before you dig, dial toll free MISS DIG
at: 1 – 800 – 482 – 7171.**

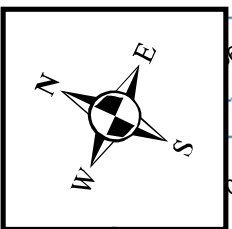
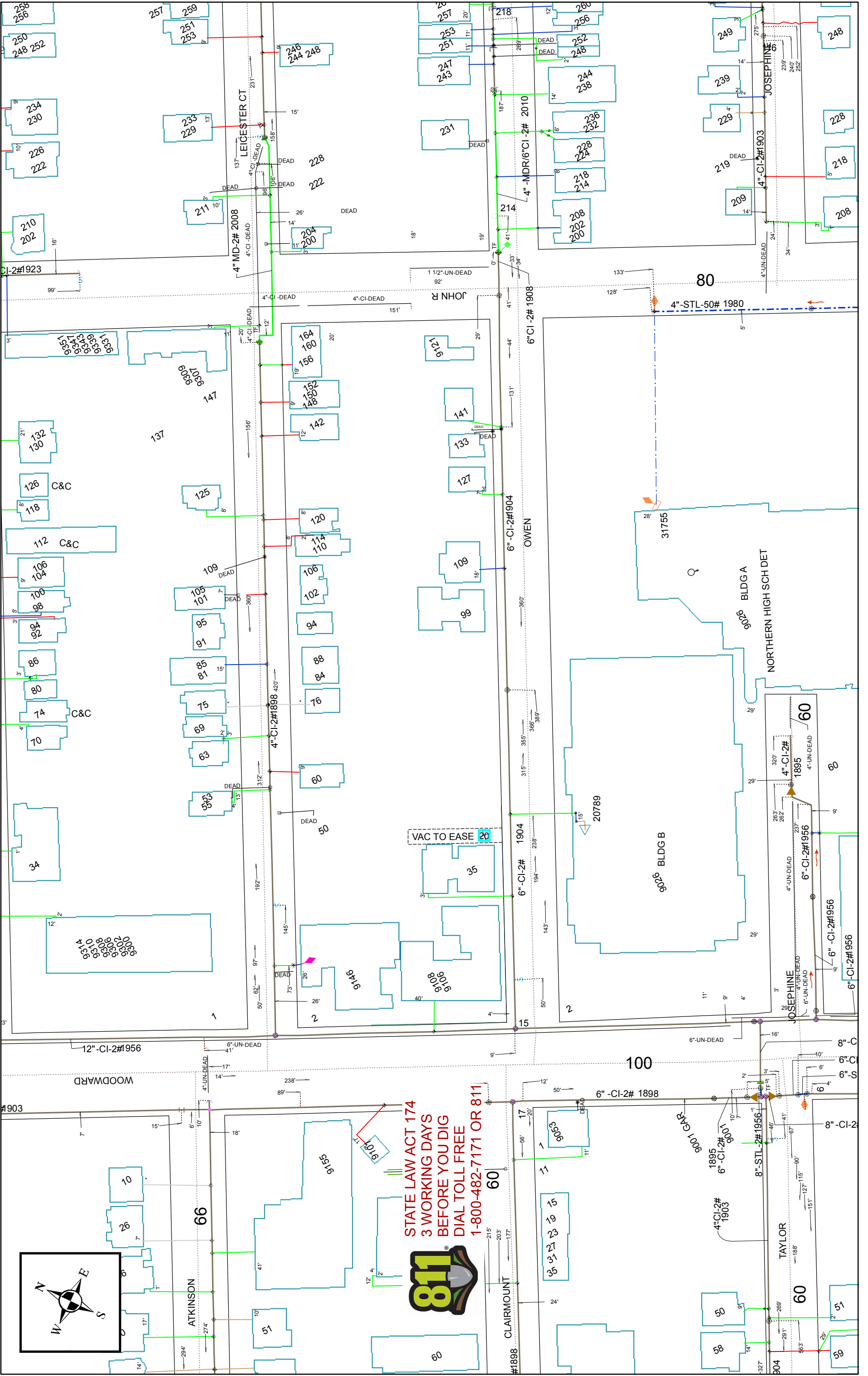
DTE Energy Gas Leak Emergency Phone Number: 1- 800 – 947 – 5000.

Sincerely,

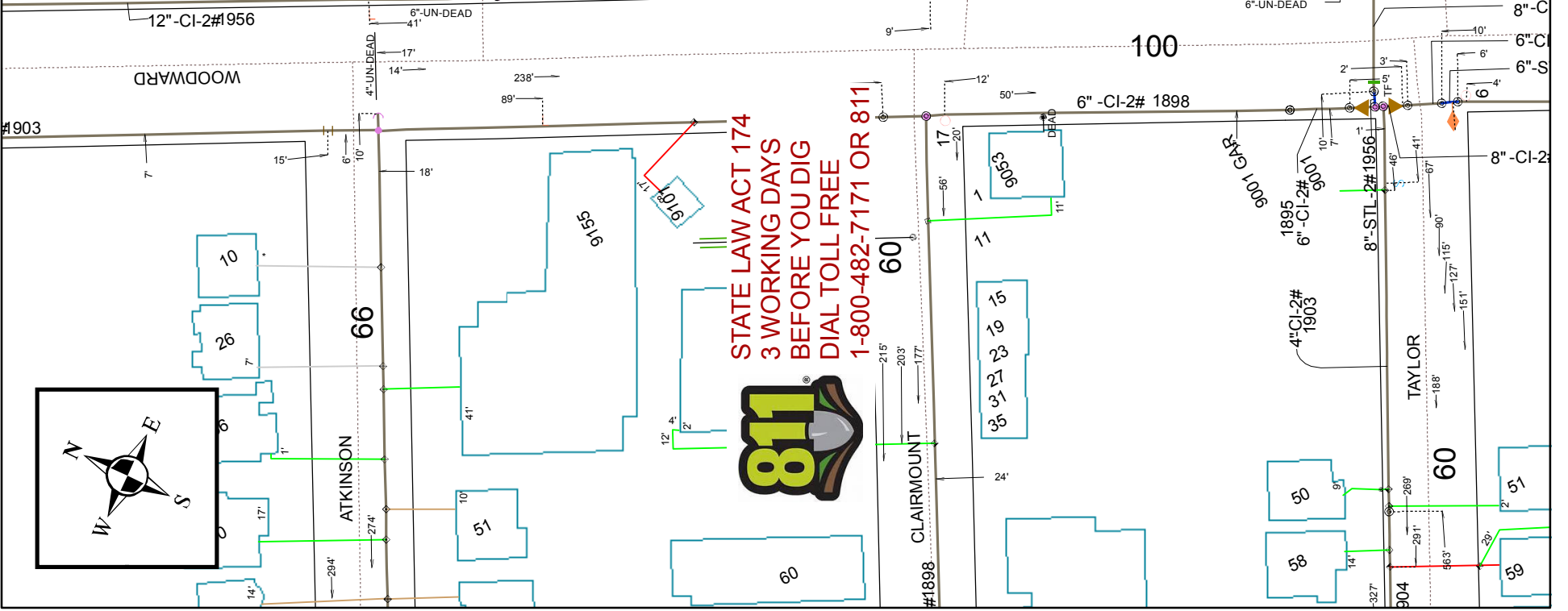
/s/ Karl A Schneider

Drafter
Data Integrity and Technology

RET/
Enclosure



STATE LAW ACT 174
 3 WORKING DAYS
 BEFORE YOU DIG
 DIAL TOLL FREE
 1-800-482-7171 OR 811



Gas GIS Legend

Service Symbols

- EndCap
- LoopedService
- Section
- EFV
- Relief Valve
- AbandonedService
- Aban. Service pipe

NOTE: Service line style is the same as the main it is tied into

Customer Events

- Service Event
- CUTCAP (Cctype, location)

AbandonedGasPipeSymbol

- Abandoned Gas Device
- End Cap
- Section Symbol

Gas Pipe Protection

- Casing
- Shield
- Sleeve

Land

- Bridge
- DrainCreek
- Easement
- LotLine
- RailRoad
- RightOfWay
- Tunnel
- Water
- Street Centerline
- Building
- Landmark
- BrownField

DTE Energy Known Sites of Environmental Contamination

CPAnode

- Single
- Multiple

CP Rectifier

- Rectifier

Test Point

- DOT
- Regular TW

Tracer Wire

- Tracer Wire

Gas Valve

- Main, Closed
- Main, Open
- Service, Closed
- Service, Open

Regulator Station

- District
- Secondary
- Service

Controllable Fitting

- PCF Pressure Control Fitting
- SSF Short Stop
- Stopple Fitting
- Distribution Tiein
- Subtransmission Tiein
- Transmission Tiein

NonControllableFitting

- Branch
- Cap
- Coupling
- Ell
- Insulated
- Reducer
- Section
- Tee
- Transition
- <all other values>

Material Type

- CU - Copper
- CI - Cast Iron
- PLA - Plastic
- STL - Bare Steel
- STL - Coated Steel
- PLA - Plastic, Joint Trench
- OTR - Other
- UN - Unknown
- WI - Wrought Iron
- <all other values>
- Inactive - all material types

Main Lines Styles

- In Design Main (Proposed)
- Distribution Main
- Distribution - Joint Trench
- Subtransmission Main
- Transmission
- Exposed Pipe (Coated Steel)
- Pipe Lining (CI or WI)
- AbandonedGasPipe

Other Symbols

- Drip
- Flow Arrow
- Foreign Utility Pipe
- Public Improvement
- Pressure Monitoring Device
- Leak Report - Leak Repair
- Automated Repairs
- LowPoint
- Summit

Scaled Areas

- 10
- 30
- 50 SCALE