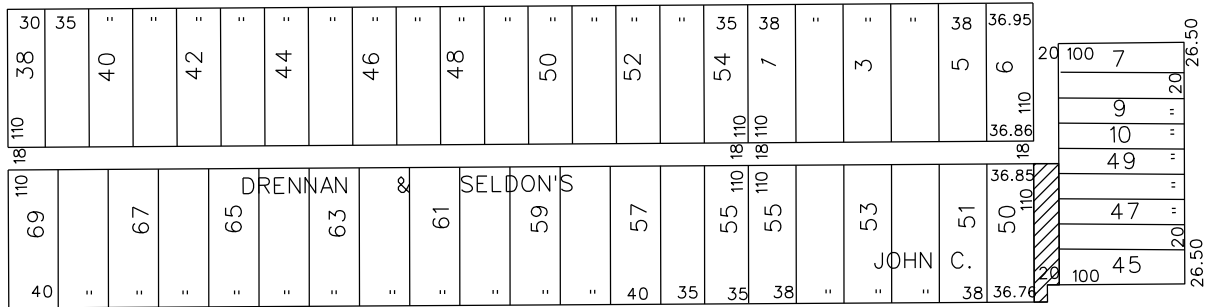


PETITION NO. 1593
 MICHALE JEWEL
 12001 GUNSTON AVE.
 DETROIT, MICHIGAN 48205
 PHONE NO. 313 753-5323



ELMO AVE. 50 FT. WD.

MINDEN AVE. 60 FT. WD.



CHRISTY AVE. 60 FT. WD.

GUNSTON AVE. 80 FT. WD.



- VACATE TO EASEMENT

(FOR OFFICE USE ONLY)

CARTO 59 A

B					
A					
DESCRIPTION	DRWN	CHKD	APPD	DATE	
REVISIONS					
DRAWN BY	WLW	CHECKED			
DATE	07-24-17	APPROVED			

REQUEST TO VACATE TO EASEMENT
 THE SOUTH PORTION OF THE
 NORTH/SOUTH PUBLIC ALLEY, 20 FT. WD.
 IN THE BLOCK BOUND BY
 CHRISTY, ELMO, MINDEN
 AND GUNSTON AVE.

CITY OF DETROIT CITY ENGINEERING DEPARTMENT SURVEY BUREAU	
JOB NO.	01-01
DRWG. NO.	X 1593