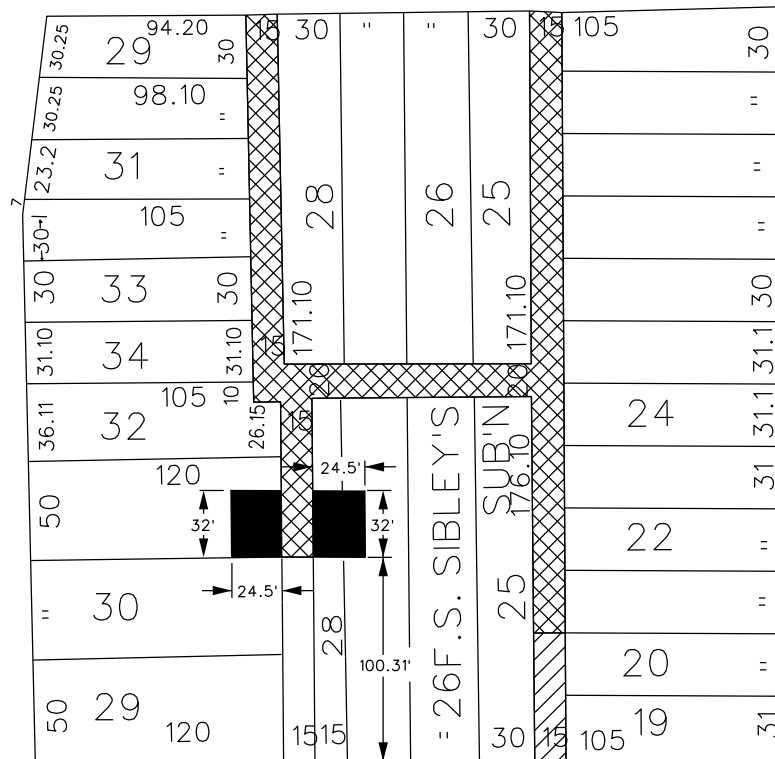


PETITION NO. 1590  
 ODM PARKING, LLC  
 C/O INTERSECTION CONSULTING GROUP  
 2211 WOODWARD AVE.  
 DETROIT, MICHIGAN 48201  
 BRIAN ELLISON  
 PHONE NO. 313 397-5863



**TEMPLE AVE. 60 FT. WD.**

**CLIFFORD ST. 60 FT. WD.**



**PARK AVE. 60 FT. WD.**

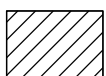
**SPROAT ST. 50 FT. WD.**



- OUTRIGHT VACATION



- REQUESTED FOR DEDICATION



- REQUESTED CONVERSION TO EASEMENT

(FOR OFFICE USE ONLY)

CARTO 29 E

| B           |          |          |      |      |  |
|-------------|----------|----------|------|------|--|
| A           |          |          |      |      |  |
| DESCRIPTION | DRWN     | CHKD     | APPD | DATE |  |
| REVISIONS   |          |          |      |      |  |
| DRAWN BY    | WLW      | CHECKED  | KSM  |      |  |
| DATE        | 12-07-18 | APPROVED |      |      |  |

REQUEST TO OUTRIGHT VACATE  
 THE EAST/WEST PUBLIC ALLEY, 20 FT. WD. AND A PORTION OF THE  
 NORTH/SOUTH PUBLIC ALLEYS, 15 FT. WD.  
 REQUEST TO CONVERT TO EASEMENT  
 A PORTION OF THE NORTH/SOUTH PUBLIC ALLEY, 15 FT. WD. AND  
 REQUEST FOR DEDICATION  
 IN THE BLOCK BOUND BY  
 PARK AVE, SPROAT, CLIFFORD ST.  
 AND TEMPLE AVE.

**CITY OF DETROIT**  
**CITY ENGINEERING DEPARTMENT**  
**SURVEY BUREAU**

**JOB NO. 01-01**

**DRWG. NO. X 1590**