



CITY OF DETROIT
DEPARTMENT OF PUBLIC WORKS
CITY ENGINEERING DIVISION

COLEMAN A. YOUNG MUNICIPAL CENTER
2 WOODWARD AVE. SUITE 601
DETROIT, MICHIGAN 48226
PHONE: (313) 224-3949 • TTY:711
FAX: (313) 224-3471
WWW.DETROITMI.GOV

May 5th, 2020

Petitioner,

RE: Petition No. x1590

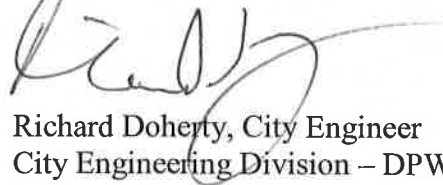
Petition No. x1590 1145 ODM Parking Properties, LLC, request to vacate part of the alley bounded by Temple Street, Clifford Street, Park Avenue, and vacated Sproat Street.

The petition was referred to the City Engineering Division – DPW for investigation (utility review) and report. This is our report.

The review of petition x1590 has concluded that the current proposal does not coordinate with the approved petition to vacate Sproat Street. It is advised that the petitioner contact the Department of Public Works: Maps and Records Office for a planning consultation on how to proceed with the petitioners objectives.

The Department of Public Works, City Engineering Division **denies** this petition request. Please receive and file this report for you reference.

Respectfully submitted,



Richard Doherty, City Engineer
City Engineering Division – DPW

JMK/

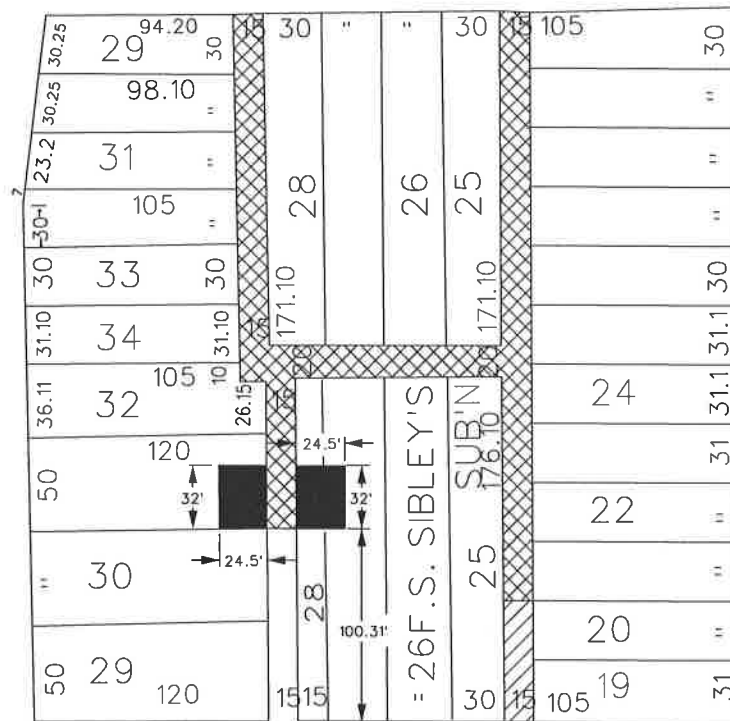
Cc: Ron Brundidge, Director – DPW
Mayor's Office – City Council Liaison

PETITION NO. 1590
 ODM PARKING, LLC
 C/O INTERSECTION CONSULTING GROUP
 2211 WOODWARD AVE.
 DETROIT, MICHIGAN 48201
 BRIAN ELLISON
 PHONE NO. 313 397-5863



TEMPLE AVE. 60 FT. WD.

CLIFFORD ST. 60 FT. WD.



PARK AVE. 60 FT. WD.

SPROAT ST. 50 FT. WD.



- OUTRIGHT VACATION



- REQUESTED FOR DEDICATION



- REQUESTED CONVERSION TO EASEMENT

(FOR OFFICE USE ONLY)

CARTO 29 E

B					
A					
DESCRIPTION	DRWN	CHKD	APPD	DATE	
REVISIONS					
DRAWN BY	WLW	CHECKED	KSM		
DATE	12-07-18	APPROVED			

REQUEST TO OUTRIGHT VACATE
 THE EAST/WEST PUBLIC ALLEY, 20 FT. WD. AND A PORTION OF THE
 NORTH/SOUTH PUBLIC ALLEYS, 15 FT. WD.
 REQUEST TO CONVERT TO EASEMENT
 A PORTION OF THE NORTH/SOUTH PUBLIC ALLEY, 15 FT. WD. AND
 REQUEST FOR DEDICATION
 IN THE BLOCK BOUND BY
 PARK AVE, SPROAT, CLIFFORD ST.
 AND TEMPLE AVE.

CITY OF DETROIT	
CITY ENGINEERING DEPARTMENT	
SURVEY BUREAU	
JOB NO.	01-01
DRWG. NO.	X 1590