

**DTE Energy – Gas Co.  
Data Integrity and Technology  
One Energy Plaza, 838-GO  
City of Detroit, MI 48226**

**May 19, 2017**

**Richard Doherty, CED DPW Head Engineer**  
City Engineering Division, DPW  
2 Woodward Ave, Suite 642  
Detroit, Michigan 48226-3462

**RE: Petition #1537: Request to Convert to Easement the East/West public alleys, 20 Ft. Wd and the North/South public alley, 20 Ft. Wd in the area bounded by E. Davison, Sherwood, Brimson Ave and New York Central R.R.**

- Not involved. **See Remarks**
- Involved: but asking you to hold action on this petition until further notice.
- Involved but have no objection to the property change - - provided that an easement of the full width of the public right-of-way (street, alley or other public place) is reserved.
- Involved: the nature of our services, and the estimated costs of removing, rerouting or abandonment of such all gas mains and/or services

**REMARKS:**

**DTE Energy–Gas Company has no involvement, nor objection to Petition #1537 as mentioned above. See enclosed strip print and attached notice of public hearing, for your use and information.**

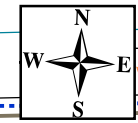
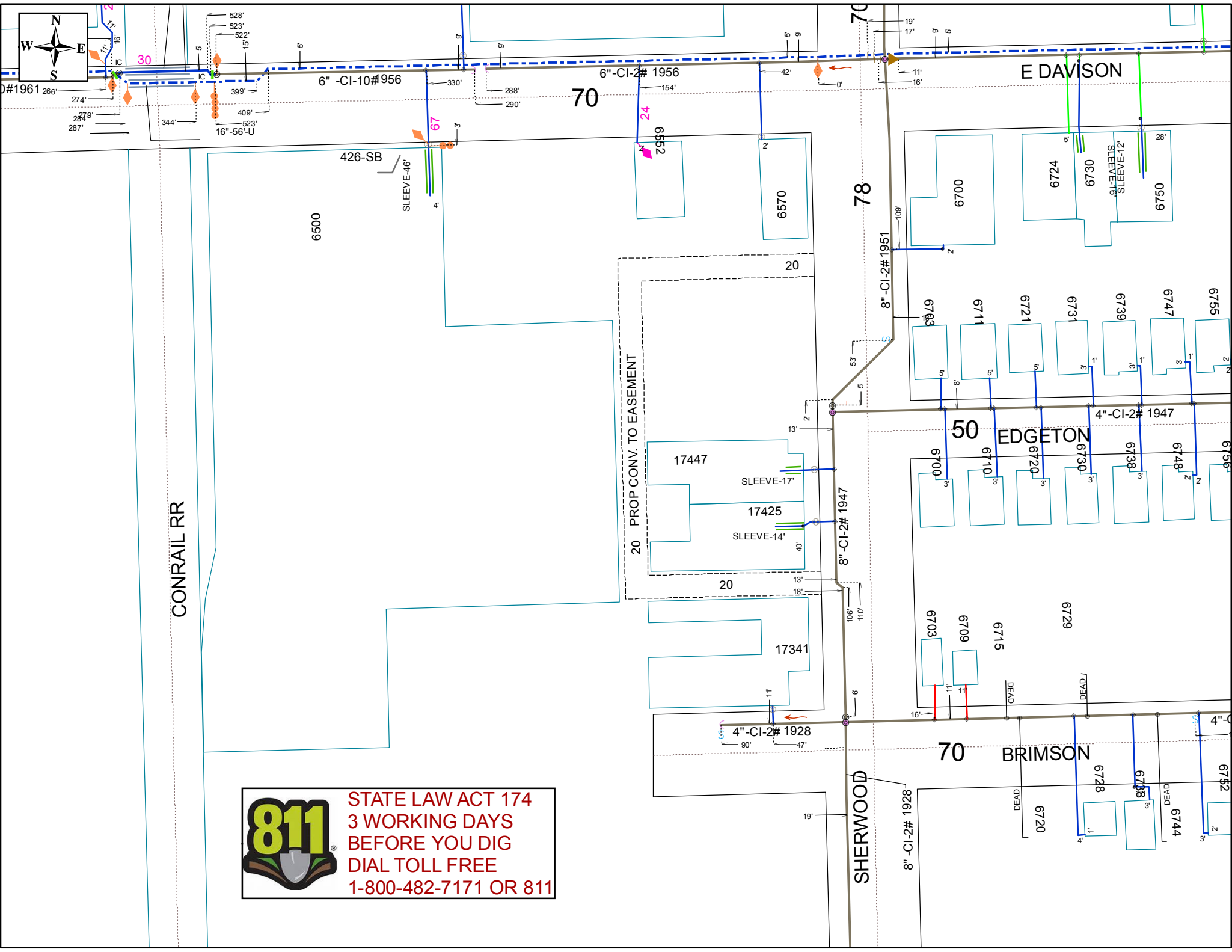
**Please abide by Public Act 174, three (3) working days before you dig, dial toll free MISS DIG at: 1 – 800 – 482 – 7171.**

**DTE Energy Gas Leak Emergency Phone Number: 1- 800 – 947 – 5000.**

Sincerely,

***/s/ Russell E Thornton***  
Drafter  
Data Integrity and Technology

RET/  
Enclosure




**STATE LAW ACT 174**  
**3 WORKING DAYS**  
**BEFORE YOU DIG**  
**DIAL TOLL FREE**  
**1-800-482-7171 OR 811**

# Gas GIS Legend

## Service Symbols

- EndCap
- LoopedService
- Section
- EFV Relief Valve
- AbandonedService
- Aban. Service pipe

NOTE: Service line style is the same as the main it is tied into

## Customer Events

- Service Event
- CUTCAP (CCtype, location)

## AbandonedGasPipeSymbol

- Abandoned Gas Device
- End Cap
- Section Symbol

## Gas Pipe Protection

- Casing
- Shield
- Sleeve

## Land

- Bridge
- DrainCreek
- Easement
- LotLine
- RailRoad
- RightOfWay
- Tunnel
- Water
- Street Centerline
- Building
- Landmark
- BrownField
- Known Sites of Environmental Contamination DEQ Dec2008

## CPAnode

- Single
- Multiple

## CP Rectifier

- Rectifier

## Test Point

- DOT
- Regular TW

## Tracer Wire

- Tracer Wire

## Gas Valve

- Main, Closed
- Main, Open
- Service, Closed
- Service, Open

## Regulator Station

- District
- Secondary
- Service

## Controllable Fitting

- PCF Pressure Control Fitting
- SSF Short Stop
- Stopple Fitting
- Distribution Tiein
- Subtransmission Tiein
- Transmission Tiein

## NonControllableFitting

- Branch
- Cap
- Coupling
- Ell
- Insulated
- Reducer
- Section
- Tee
- Transition
- <all other values>

## Material Type

- CU - Copper
- CI - Cast Iron
- PLA - Plastic
- STL - Bare Steel
- STL - Coated Steel
- PLA - Plastic, Joint Trench
- OTR - Other
- UN - Unknown
- WI - Wrought Iron
- <all other values>
- Inactive - all material types

## Main Lines Styles

- In Design Main (Proposed)
- Distribution Main
- Distribution - Joint Trench
- Subtransmission Main
- Transmission
- Exposed Pipe (Coated Steel)
- Pipe Lining (CI or WI)
- AbandonedGasPipe

## Other Symbols

- Drip
- Flow Arrow
- Foreign Utility Pipe
- Public Improvement
- Pressure Monitoring Device
- Leak Report - Leak Repair
- Automated Repairs
- LowPoint
- Summit

## Scaled Areas

- 10, 30, 50 SCALE