

TO: City Engineering Division, DPW
900 Cadillac Tower Building
65 Cadillac Square
Detroit, Michigan 48226-2873
Survey Bureau: 313-224-3970
Fax: 313-224-3471

Petition No. 1502

The proposed change in property (referred to above) would affect our services as follows:

- Not Involved.
- Involved; but asking you to hold action on this petition until further notice.
- Involved; the nature of our services, and the estimated costs of removing and/or rerouting such services are:
- Involved; have no objection to requested encroachment into Woodward at 500-650 Woodward (with streetscape improvements) as shown on drawing no. x1502 dated 10/30/2017.

Traffic Engineering Division - DPW
(Utility or City Department)

Ashok Patel *Sunny Jacob*
By

City Traffic Engineer
Title

January 19, 2018
Date

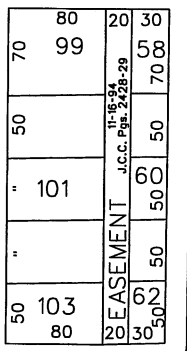
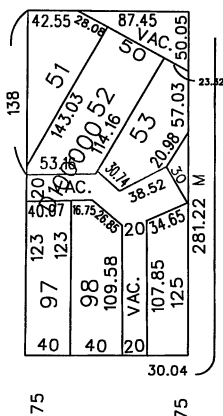
313 224-1610
Area code-Telephone number

MA/ma

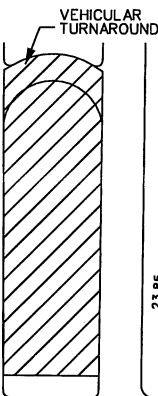
PETITION NO. 1502
 DOWNTOWN DETROIT PARTNERSHIP
 ONE CAMPUS MARTIUS, SUITE 380
 DETROIT, MICHIGAN 48226
 C/O ERIC B. LARSON
 PHONE NO. 313 566-8250



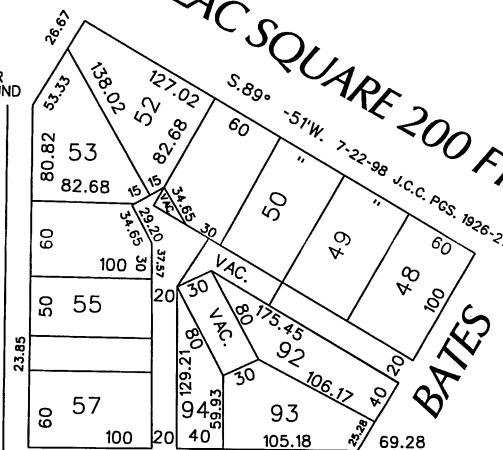
GRISWOLD ST. VARIOUS WIDTHS



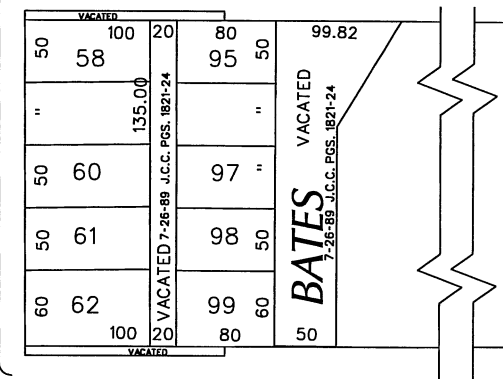
WOODWARD AVE.
190 FT. WD.



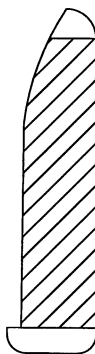
CADILLAC SQUARE 200 FT. WD.



CONGRESS ST. 60 FT. WD.



LARNED ST. 60 FT. WD.



RANDOLPH ST.
120 FT. WD.



- REQUEST ENCROACHMENT
 (With Streetscape Improvements)

(FOR OFFICE USE ONLY)

CARTO 28 B

B					
A					
DESCRIPTION	DRWN	CHKD	APPD	DATE	
REVISIONS					
DRAWN BY	WLW	CHECKED			
DATE	10-30-17	APPROVED			

**REQUEST ENCROACHMENT
 INTO WOODWARD
 AT 500 - 650 WOODWARD
 (With Streetscape Improvements)**

CITY OF DETROIT	
CITY ENGINEERING DEPARTMENT	
SURVEY BUREAU	
JOB NO.	01-01
DRWG. NO.	X 1502