

City of Detroit  
**City Engineering Division, Department of Public Works**  
**Survey Bureau**

NOTICE OF PROPOSED CHANGE IN PROPERTY

Date: 10/30/2017

Petition: x1502

- |  |  |
|--|--|
| <input type="checkbox"/> AT&T Telecommunication            |  |
| <input type="checkbox"/> Comcast Television (CATV)         | <input type="checkbox"/> Berm Use                |
| <input checked="" type="checkbox"/> Detroit Edison (DTE)   |  |
| <input type="checkbox"/> Fire Department                   | <input type="checkbox"/> Conversion to Easement  |
| <input type="checkbox"/> Great Lakes Water Authority       |  |
| <input type="checkbox"/> Land Bank Authority               | <input type="checkbox"/> Dedication              |
| <input type="checkbox"/> Michcon (DTE)                     |  |
| <input type="checkbox"/> Planning & Development Department | <input checked="" type="checkbox"/> Encroachment |
| <input type="checkbox"/> Public Lighting Authority         |  |
| <input type="checkbox"/> Public Lighting Department        | <input type="checkbox"/> Outright Vacation       |
| <input type="checkbox"/> Police Department                 |  |
| <input type="checkbox"/> Solid Waste Division, DPW         | <input type="checkbox"/> Temporary Closing       |
| <input type="checkbox"/> Street Design Bureau, DPW         |  |
| <input type="checkbox"/> Street Maintenance Division, DPW  |  |
| <input type="checkbox"/> Traffic Engineering Division, DPW |  |
| <input type="checkbox"/> Water and Sewerage Department     |  |
| <input type="checkbox"/> _____                             |  |

A petition drawing is attached. Property shown on the attached print is proposed to be changed as indicated. Kindly report (using the back of this sheet) the nature of your services, if any affected by the proposed change and the estimated costs of removing and rerouting such services (if necessary).

Please return one copy to City Engineering Division, DPW within two weeks of the submittal date. Retain one copy and print for you file.

Ron Brundidge, Director, Department of Public Works

By: Richard Doherty, CED DPW  
City Engineer

**TO: City Engineering Division, DPW  
2 Woodward Ave., Suite 642  
Detroit, Michigan 48226-3462  
Survey Bureau: 313-224-3970**

**Petition: x1502**

The proposed change in property (referred to on the other side of this sheet) would affect our services as follows:

- Not Involved
- Involved; but asking you to hold action on this petition until further notice.
- Involved; but no objections to the property change.
- Involved; objection to the property change.
- Involved; but no objections to the property change...provided as easement of the full width of the public right-of-way (street, alley or other public place) is reserved.
- Involved; the nature of our services and the estimated costs of removing and/or rerouting such services are:

DTE Energy  
(Utility or City Department)

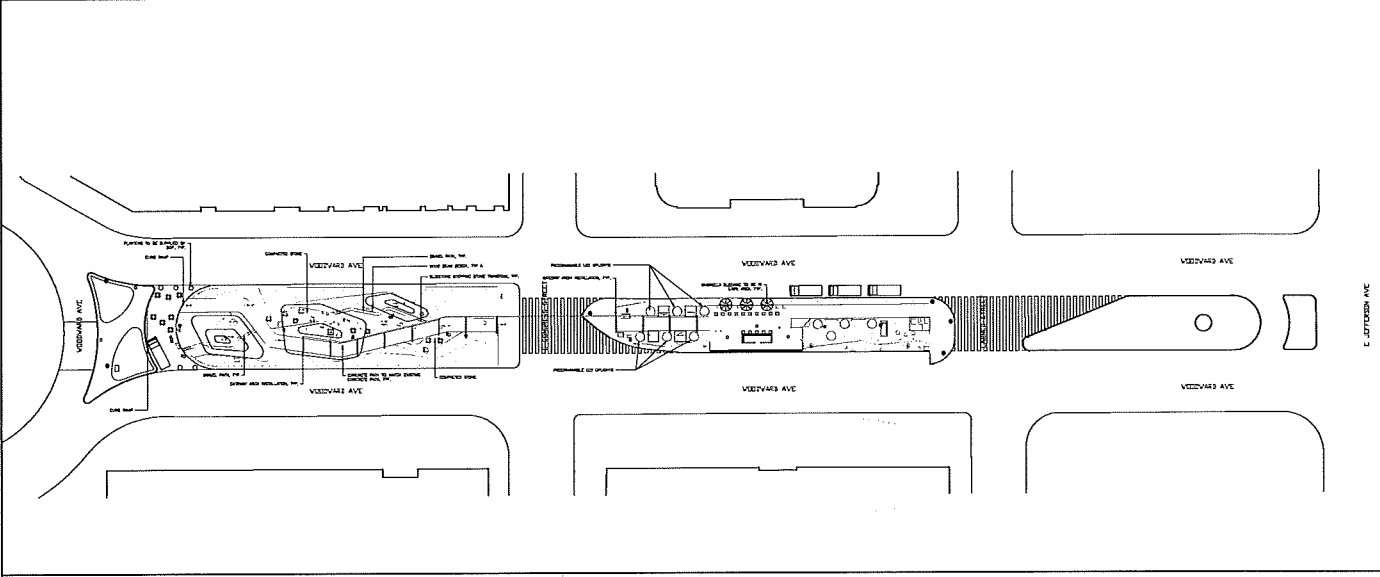
Non lxr  
By

Staff Engineer  
Title

2/21/2018  
Date

313.235.1884  
Area code – Telephone number

**CONGRESS ST. STATION**  
 WOODWARD AVENUE & CONGRESS ST.  
 DETROIT, MI 48226



These drawings are instruments of service and are not to be used for other projects, for addition to the project or completion of this project, by others. This is a trademark design.

REVISION #1 03-13-2017  
 DATE: 03-07-17  
 DRAWN BY: MJ  
 SCALE: 1" = 32'-0"  
 DESIGNED BY: MJC  
 CHECKED BY: MJC  
 APPROVED BY: MJC

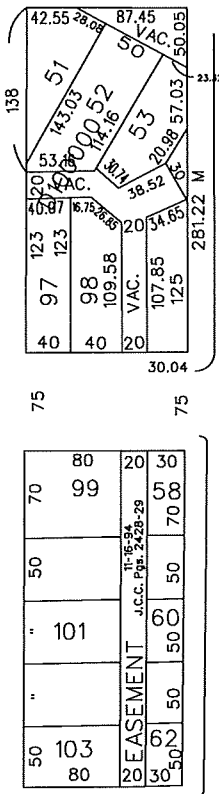
[Symbol]	LEGEND
[Symbol]	PERMANENT PLANTING BEES
[Symbol]	TEMP PLANTING
[Symbol]	MOVABLE SITE FURNISHINGS
[Symbol]	SITE BOUNDARIES
[Symbol]	SITE CHANGES
[Symbol]	WASTEWATER (SEWAGE) TREATMENT ELEMENTS
[Symbol]	ARCHITECTURAL CONTROL BOX
[Symbol]	GRID OUTLETS
[Symbol]	ELECTRIC & DATA FOR ARCH LIGHTING TRAY
[Symbol]	WATER OVERSEER'S LOG

ANNOTATED  
 SITE PLAN  
 DRAWING FOR CONSTRUCTION ONLY

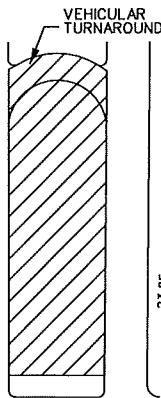
PETITION NO. 1502  
 DOWNTOWN DETROIT PARTNERSHIP  
 ONE CAMPUS MARTIUS, SUITE 380  
 DETROIT, MICHIGAN 48226  
 C/O ERIC B. LARSON  
 PHONE NO. 313 566-8250



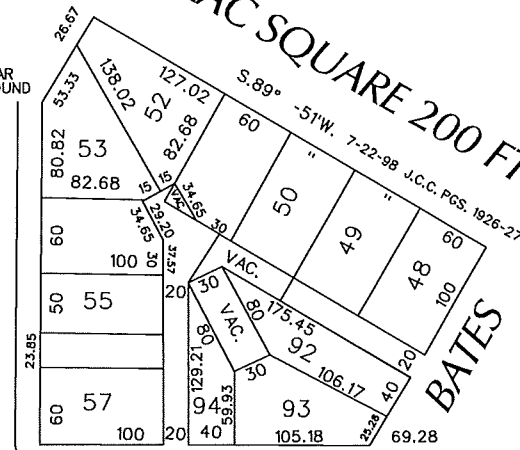
GRISWOLD ST. VARIOUS WIDTHS



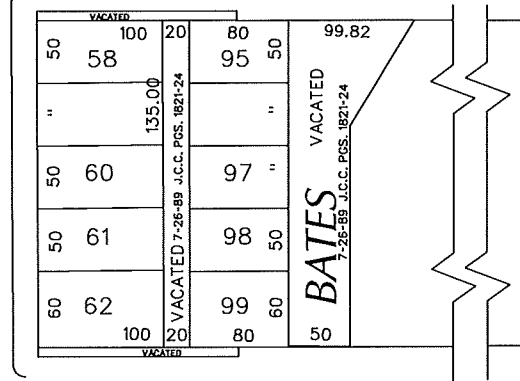
WOODWARD AVE.  
 190 FT. WD.



CADILLAC SQUARE 200 FT. WD.



CONGRESS ST. 60 FT. WD.



RANDOLPH ST.  
 120 FT. WD.

LARNED ST. 60 FT. WD.

 - REQUEST ENCROACHMENT  
 (With Streetscape Improvements)

(FOR OFFICE USE ONLY)

CARTO 28 B

B					
A					
DESCRIPTION	DRWN	CHKD	APPD	DATE	
REVISIONS					
DRAWN BY	WLW	CHECKED			
DATE	10-30-17	APPROVED			

REQUEST ENCROACHMENT  
 INTO WOODWARD  
 AT 500 - 650 WOODWARD  
 (With Streetscape Improvements)

CITY OF DETROIT CITY ENGINEERING DEPARTMENT	
SURVEY BUREAU	
JOB NO.	01-01
DRWG. NO.	X 1502



March 10, 2017

SENT VIA HAND DELIVERY

Detroit City Council  
Coleman A. Young Municipal Center  
2 Woodward Avenue  
Detroit, Michigan, 48226

**RE: Woodward Avenue Median Enhancements - Petition for Right of Way Encroachment Approval**

Dear Honorable Council:

The Downtown Detroit Partnership (DDP), in partnership with the City of Detroit, private sector partners and funders, would like to conduct a streetscape improvement project in Downtown Detroit, with the goal of enhancing and beautifying the two traffic medians within the Woodward Avenue right of way, from the Fort Street right of way to the Larned Street right of way. The proposed streetscape improvements would be undertaken immediately, in concert with the opening of the QLINE, which is scheduled to open May 12<sup>th</sup> of this year.

The proposed streetscape improvements include the installation of ornamental trees and flowers, lawn areas, pedestrian pathways using non-standard and standard paving materials, furnishings such as benches, swings, moveable chairs and tables, and public art such as archways and artistic seating objects.

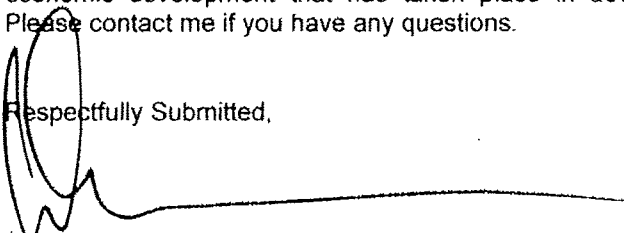
The proposed improvements also include an updated irrigation system and the installation of underground electrical system to power various outlets and the archways within both medians.

Also proposed, subject to approval from the Traffic Engineering Division of the Department of Public Works, are new traffic controls/equipment, signal timing, and striping to safely warrant vehicular movements and pedestrian traffic coming to and from the median areas from both sides of the street and from median to median.

As part of this proposal, the DDP would like to have the vehicular turnaround lane located north of the northernmost median closed to allow safe pedestrian movement between medians.

DDP respectfully requests that the Honorable Council adopt a resolution authorizing the proposed encroachments in order to situate the various elements within the Woodward Avenue medians as described above and as described in Attachment A to this petition letter. DDP believes that this project adds to the tremendous work and economic development that has taken place in downtown through public-private partnership arrangements. Please contact me if you have any questions.

Respectfully Submitted,

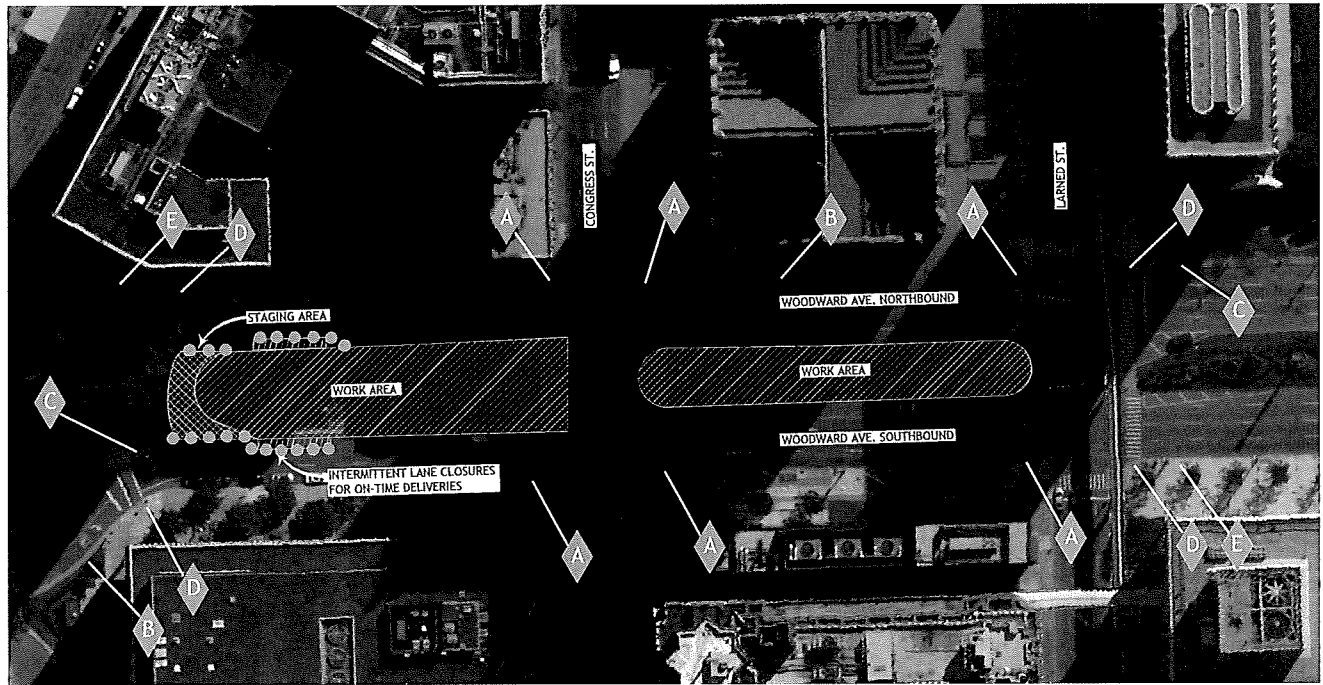








Eric B. Larson  
CEO

Attachments: A- Woodward Avenue Median Enhancement Conceptual Plans & Details

One Campus Martius  
Suite 380  
Detroit, MI 48236

Tel: 313.566.8250  
Fax: 313.567.3474  
[downtowndetroit.org](http://downtowndetroit.org)



- |   |  |   |                                       |
|---|--|---|---------------------------------------|
|  | <b>SIDEWALK CLOSED</b><br>R9-9         |  | <b>SIDEWALK CLOSED AHEAD</b><br>R9-11 |
|  | <b>LEFT LANE CLOSED AHEAD</b><br>W20-5 |  | <b>END ROAD WORK</b><br>G20-2         |
|  | <b>WORK ZONE BEGINS</b><br>R5-18C      |  | <b>CHANNELIZATION DEVICE</b>          |

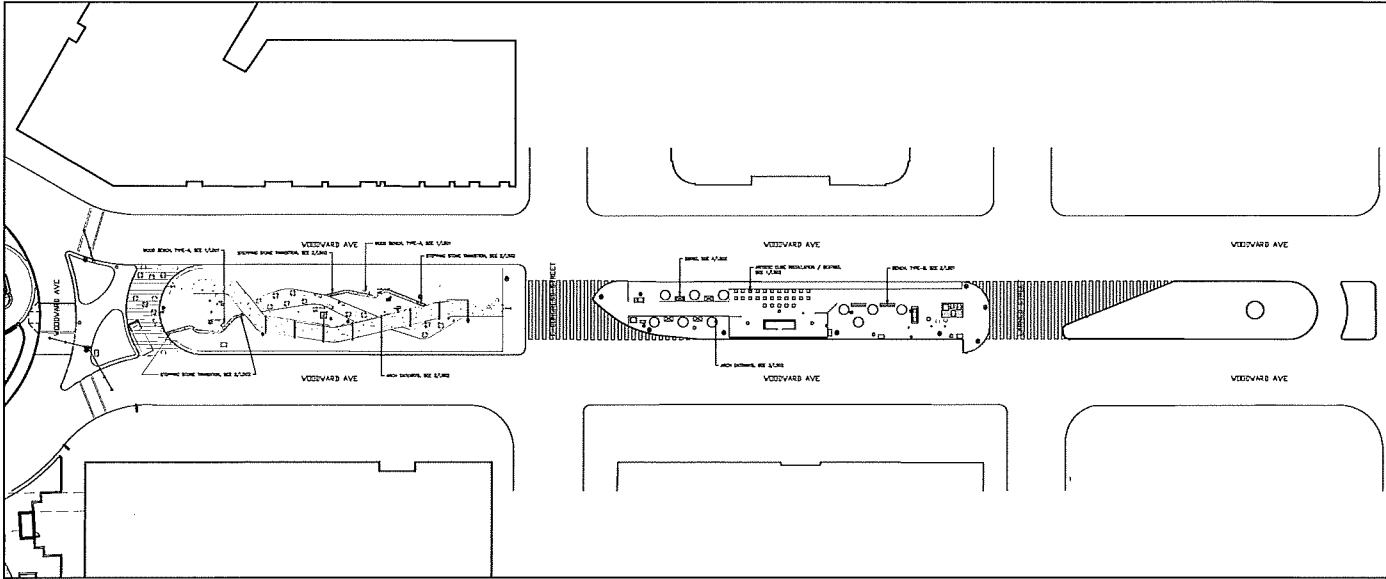
**SITE DATA**

WORK HOURS 7:30 AM TO 3:30 PM  
 START DATE 4-7-17  
 END DATE 5-8-17  
 MONDAYS THROUGH SATURDAYS ONLY

STREET INFORMATION, SIGN, SIGNALS AND TRAFFIC CONTROL DEVICES ARE THE PROPERTY OF THE CITY OF DETROIT. THE CITY OF DETROIT IS NOT RESPONSIBLE FOR THE DESIGN OR CONSTRUCTION OF ANY SIGN OR SIGNALS. THE CITY OF DETROIT IS NOT RESPONSIBLE FOR THE DESIGN OR CONSTRUCTION OF ANY SIGN OR SIGNALS. THE CITY OF DETROIT IS NOT RESPONSIBLE FOR THE DESIGN OR CONSTRUCTION OF ANY SIGN OR SIGNALS.

**811**  
 CALL BEFORE YOU DIG  
 1-800-482-7171

PROJECT NUMBER	3-27-17
DATE	3-27-17
SCALE	1" = 30'
DESIGNED BY	M. BROCK
CHECKED BY	M. BROCK
IN CHARGE	
APP'D FOR	
REVISIONS	
ENGINEERING FOR RESULTS 13500 BEECH ROAD SOUTHGATE, MI 48196 TEL: 313-487-5555 FAX: 313-487-5566 WWW.ENGFORRESULTS.COM	
HENNESSY  HENNESSY, INC.	
TITLE SIGN AND STAGING PLAN CONGRESS STREET STATION CITY OF DETROIT WAYNE COUNTY, MICHIGAN	
SHEET CE1	

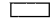


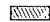


**GROUNDSWELL**  
 DESIGN GROUP | PHILADELPHIA, USA | EST. 08  
 CORPORATION | Groundswell Group, Inc., LLC

**CONGRESS ST. STATION**  
 WOODWARD AVENUE & CONGRESS ST.  
 DETROIT, MI 48226

This drawing is the property of Groundswell and is not to be used for other projects, for additions to this project or completion of this project by others. This is a design concept.

FOUNDER #1 02.13.2017  
 DATE 03.27.17  
 DRAWN BY JM  
 SCALE 1" = 32'-0"  
 DESCRIPTION 100% CONCEPT MATERIALS PLAN  
 APPROVED BY: MD

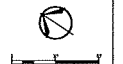
- LEGEND**
-  C.I.P. CONCRETE PATH TO MATCH EXISTING CONCRETE PATH, SEE ENGINEER'S DWGS FOR DETAILS
  -  STONE FINES PAVING, SEE ENGINEER'S DWGS FOR DETAILS, MATERIAL COLOR TO BE APPROVED BY GROUNDSWELL
  -  GRAVEL GARDEN PATH
  -  EXISTING ASPHALT PAVING TO BE PAINTED, OPEN CALL TO ARTISTS OPPORTUNITY

  
 CONCEPTUAL MATERIALS PLAN  
 DESIGNED FOR CONSTRUCTION ONLY

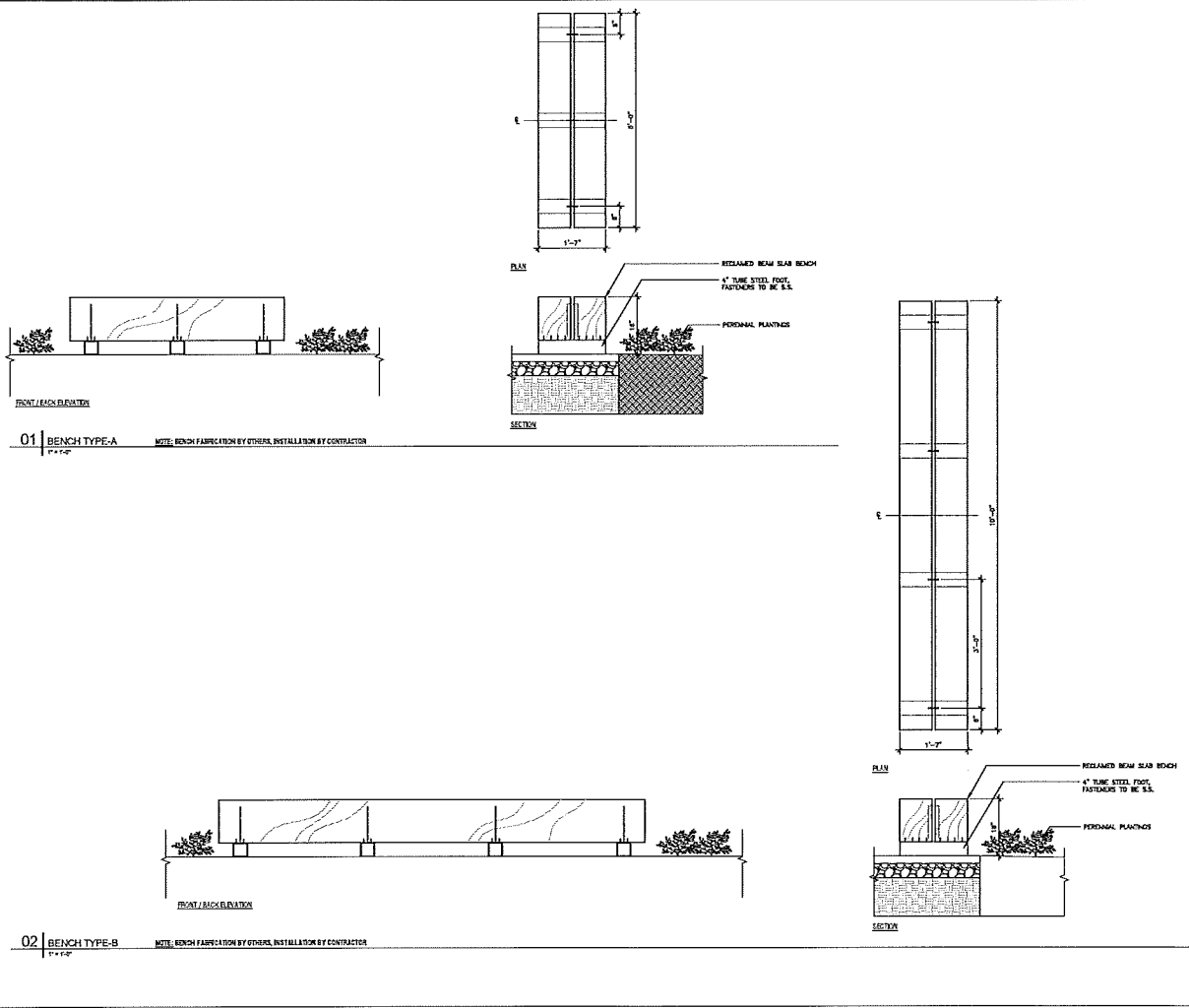
L-301

These drawings are instruments of service and as such may not be used for other projects, for additions to this project or completion of this project without the trademark design.

DATE:	03.07.17
DRAWN BY:	MM
SCALE:	1" = 32'-0"
DESCRIPTION:	100% CONCEPT DESIGN PACKAGE
APPROVED BY:	ADC



CONCEPTUAL  
 SHOP DRAWINGS  
 DRAWING FOR COORDINATION ONLY



**01 BENCH TYPE-A**  
 1'-0"  
 NOTE: BENCH FABRICATION BY OTHERS, INSTALLATION BY CONTRACTOR

**02 BENCH TYPE-B**  
 1'-0"  
 NOTE: BENCH FABRICATION BY OTHERS, INSTALLATION BY CONTRACTOR



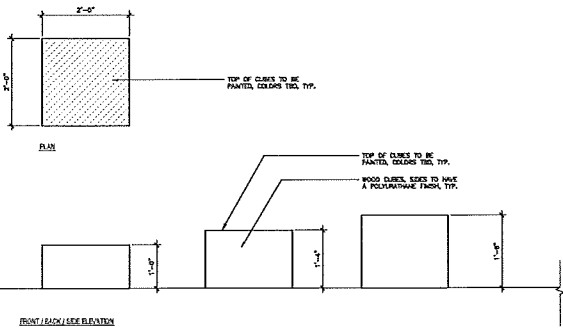
CONGRESS ST. STATION  
WOODWARD AVENUE & CONGRESS ST.  
DETROIT, MI 48226

These drawings are instruments of service and as such may not be used for other projects, for additions to this project or completion of this project by others. This is a trademark design.

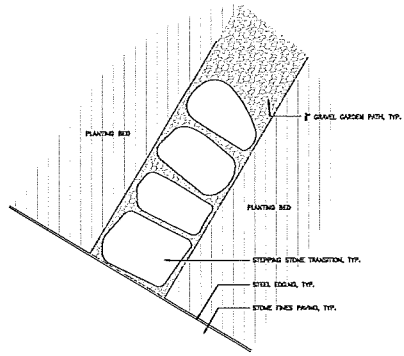
DATE	03.07.17
DRAWN BY	MJ
SCALE	1" = 32'-0"
DESIGNATION	1000-CONCRETE RELEASE PACKAGE
APPROVED BY	MJC



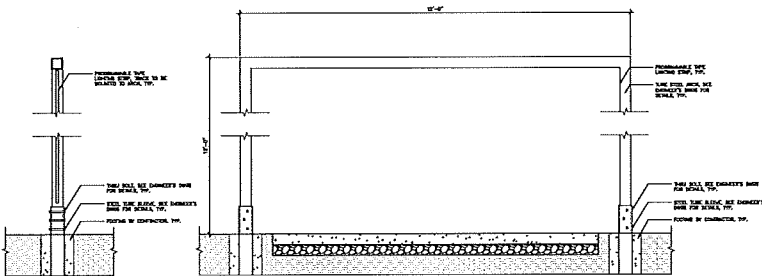
CONCEPTUAL  
SHOP DRAWINGS  
DRAWING FOR COORDINATION ONLY



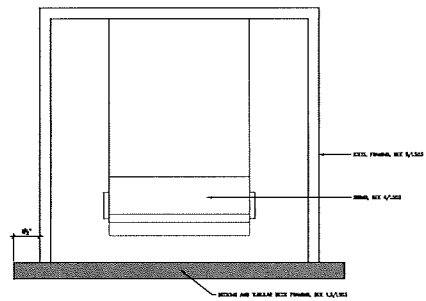
01 ARTISTIC CUBE INSTALLATIONS NOTE: CUBE FABRICATOR BY OTHERS, INSTALLATION BY CONTRACTOR



02 STEPPING STONE TRANSITION



03 GATEWAY ARCHES NOTE: GATEWAY ARCH FABRICATOR BY OTHERS, INSTALLATION BY CONTRACTOR



04 SWINGS NOTE: SWING STRUCTURE FABRICATOR BY OTHERS, INSTALLATION BY CONTRACTOR

# SORELLA

## Product Data Sheet



Classic in form. Sleek in steel. Sorella is the lovely Italian word for "sister" and an apt name for this attractive family group. Sorella planters are related in their construction and softly curved rectilinear profile, complementary in their individual shapes and sizes.

### Sorella

- Sorella planters may be specified in powdercoated metal.
- Planters available in rectangle or square shapes, in 18" and 30" heights.
- Fabricated, welded and ground steel panels attach to a recycled plastic base, with glides and optional drain holes.
- Planter bases and glides are compression-molded recycled plastic resulting from an innovative, patented melting process that utilizes 100% post-consumer and post-industrial waste.
- This unique process blends several material types, channeling more discarded plastics away from the landfill and into new life.
- Bases are 100% recyclable.



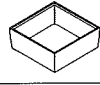

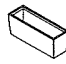
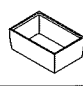



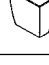


### Finishes

- All metal is finished with Landscape Forms' proprietary Pangard II<sup>®</sup> polyester powdercoat, a hard yet flexible finish that resists rusting, chipping, peeling and fading.
- A wide range of standard, optional and custom colors are available.

### To Specify

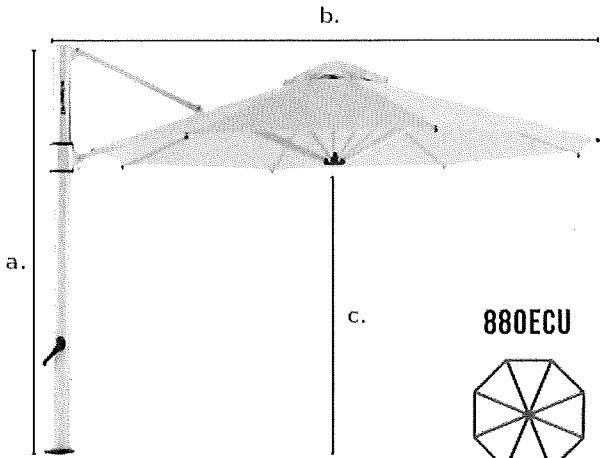
- Select Sorella planter, product description and size.
- Select powdercoat metal color.
- Specify with or without drain holes.

Designed by Robert Chipman, ASLA

	STYLE	DEPTH	WIDTH	HEIGHT	PRODUCT WEIGHT
	freestanding	15"	15"	18"	29 lb
	freestanding	30"	30"	18"	74 lb
	freestanding	45"	45"	18"	129 lb
	freestanding	30"	15"	18"	48 lb
	freestanding	45"	15"	18"	67 lb
	freestanding	45"	30"	18"	96 lb
	surface mounted	15"	15"	30"	39 lb
	freestanding	30"	30"	30"	96 lb
	freestanding	45"	45"	30"	165 lb
	surface mounted	30"	15"	30"	65 lb
	surface mounted	45"	15"	30"	90 lb
	freestanding	45"	30"	30"	125 lb

# ECLIPSE SERIES

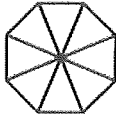
COMMERCIAL CANTILEVER



ITEM NUMBERS:

**880ECU**

**883ECU-SQ**



Octagon

Square

**DIMENSIONS OF OPEN UMBRELLA:**

Width Of Canopy	13'	10'X10'
a: Overall Height	105"	105"
b: Distnace From Rear Mast To Edge	159"	135"
c: Canopy To Ground Clearece (90° Angle)	80"	82"
Mast Diameter	3.25" X 5"	3.25" X 5"
Weight	140LBS.	120LBS.

13.5' DIAGONAL



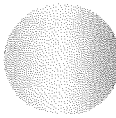
**DIMENSIONS OF CLOSED UMBRELLA:**

d: Canopy To Ground Clearance	25"	31"
e: Distnace From Rear Mast To Edge	13"	11"

**PACKING DIMENSIONS:**

Dimensions of Cardboard Package	115"X 20"X11"	115"X 20"X11"
Individual Umbrella Packaged Weight	165LBS.	145LBS.
Maximum Umbrella Per Package	1	1
Maximum Umbrella Pacakged Weight	165LBS.	145LBS.

FRAME FINISH:



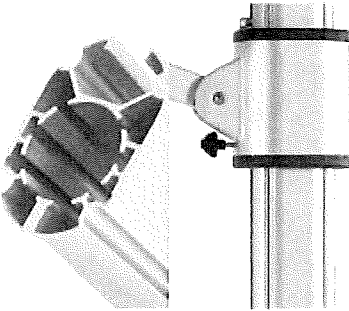
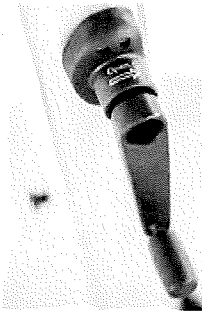
SILVER MATTE

**KEY FEATURES:**

- 9oz. Marine Grade Acrylic Fabric
- Marine Grade Corrosion Resistant Aluminum Frame
- Full 360° Rotation
- Multiple Mounting Options Available
- 20MPH Wind Rating

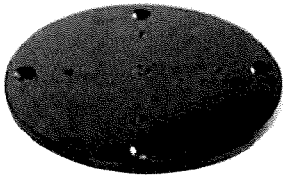
**DETAILS:**

- Smooth & Easy Crank Lift
- Extruded Aluinum Mast
- Commercial Tilt Locking

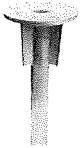


Mounting Options for the Eclipse –

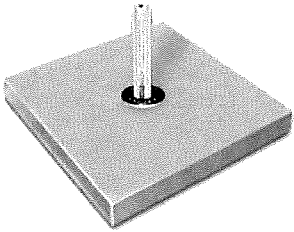
Deck Plate (to be installed per specifications on concrete or wood deck) - \$102.92



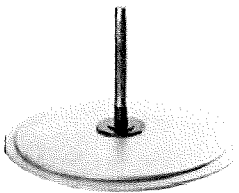
In-Ground Mount (to be installed under soil or concrete) - \$129.82



44" Square Galvanized Steel Base - \$1,163.73

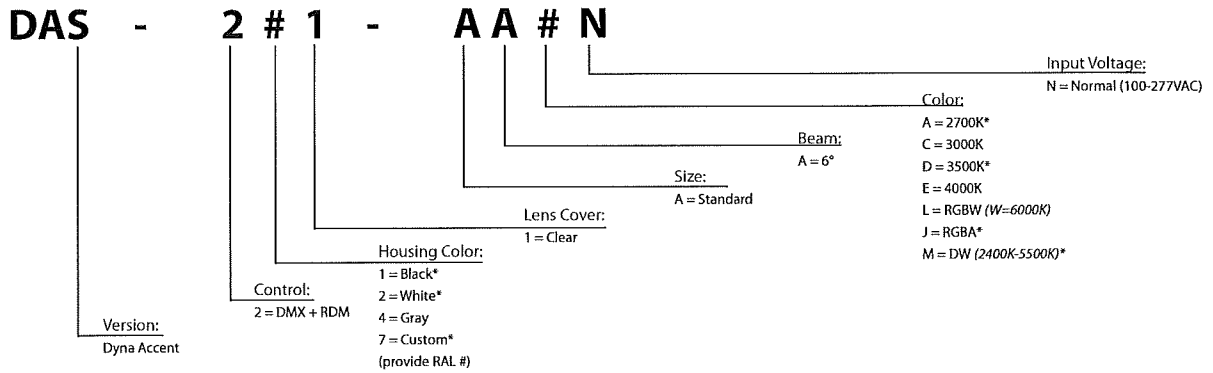


Galvanized Steel Bases - \$1,581.77

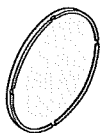


## ORDER CODES

\* Indicates Special Order

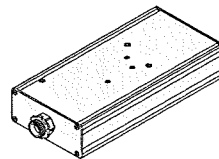


## RELATED COMPONENTS



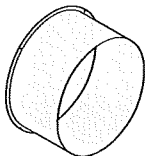
### Spread Lenses

20° Beam: DASSL20  
40° Beam: DASSL40  
60° Beam: DASSL60  
10° x 60° Beam: DASSL1060



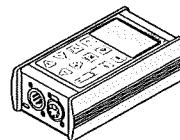
### UDM

Converts 0-10V (sink or source) to DMX  
100-277VAC Input



### Full Snoot

Gray: DAFSG  
Black: DAFSB  
White: DAFSW  
Custom: DAFSC (provide RAL #)



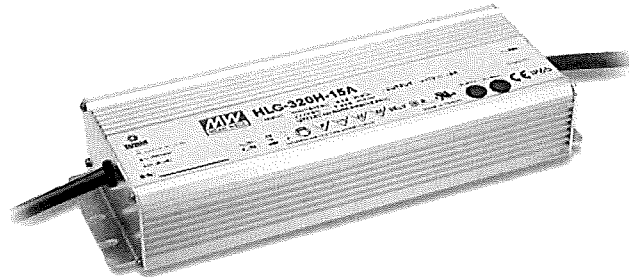
### XMT350

DMX+RDM Addressing and Testing Tool  
9V Battery Included



320W Constant Voltage + Constant Current LED Driver

# HLG-320H series



SELV IP65 IP67



CBC CE

## Features

- Constant Voltage + Constant Current mode output
- Metal housing with class I design
- Built-in active PFC function
- IP67 / IP65 rating for indoor or outdoor installations
- Function options: output adjustable via potentiometer; 3 in 1 dimming
- Typical lifetime > 62000 hours
- 7 years warranty

## Applications

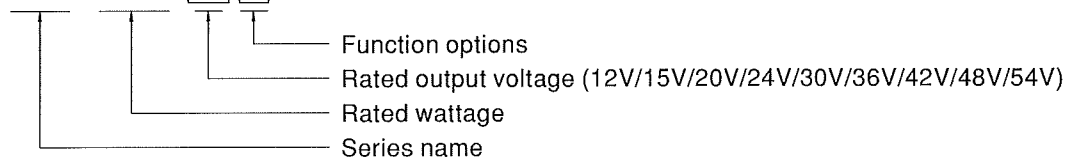
- LED street lighting
- LED high-bay lighting
- Parking space lighting
- LED fishing lamp
- LED greenhouse lighting
- Type "HL" for use in Class I , Division 2 hazardous (Classified) location.

## Description

HLG-320H series is a 320W AC/DC LED driver featuring the dual mode constant voltage and constant current output. HLG-320H operates from 90 ~ 305VAC and offers models with different rated voltage ranging between 12V and 54V. Thanks to the high efficiency up to 94%, with the fanless design, the entire series is able to operate for -40°C ~ +90°C case temperature under free air convection. The design of metal housing and IP67/IP65 ingress protection level allows this series to fit both indoor and outdoor applications. HLG-320H is equipped with various function options, such as dimming methodologies, so as to provide the optimal design flexibility for LED lighting system.

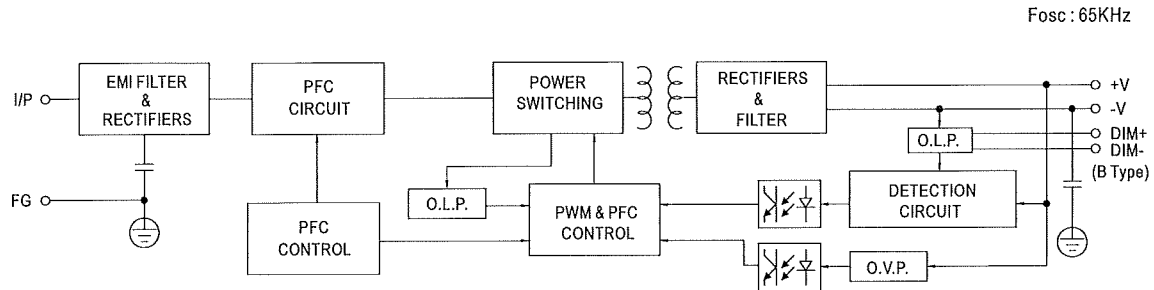
## Model Encoding

HLG - 320H - 15 A



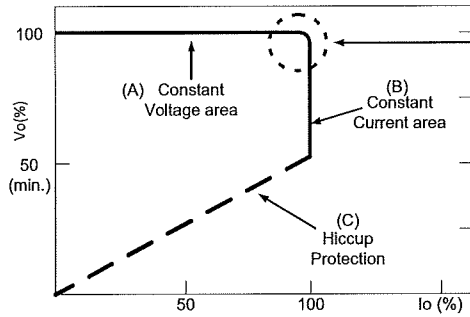
Type	IP Level	Function	Note
Blank	IP67	Io and Vo fixed	In Stock
A	IP65	Io and Vo adjustable through built-in potentiometer	In Stock
B	IP67	3 in 1 dimming function (1~10VDC, 10V PWM signal and resistance)	In Stock
C	-----	Terminal block for I/O connection. Output voltage and constant current level can be adjusted through internal potentiometer.	By request
D	IP67	Timer dimming function, contact MEAN WELL for details(safety pending).	By request

## ■ BLOCK DIAGRAM



## ■ DRIVING METHODS OF LED MODULE

※ This series is able to work in either Constant Current mode (a direct drive way) or Constant Voltage mode (usually through additional DC/DC driver) to drive the LEDs.



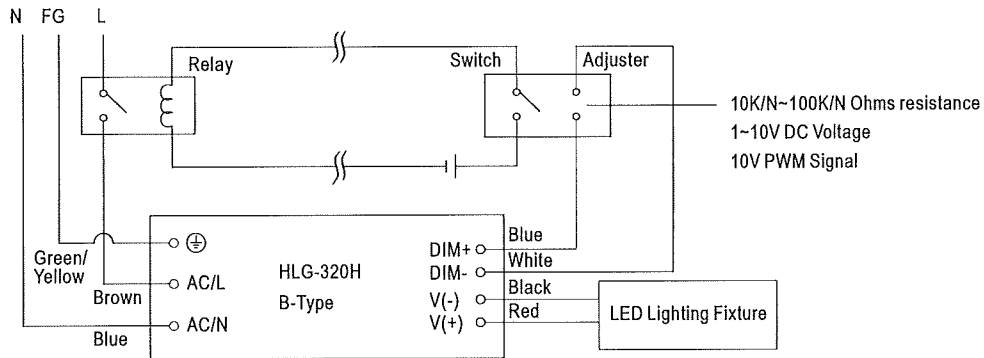
Typical output current normalized by rated current (%)

In the constant current region, the highest voltage at the output of the driver depends on the configuration of the end systems.

Should there be any compatibility issues, please contact MEAN WELL.



Note: In the case of turning the lighting fixture down to 0% brightness, please refer to the configuration as follow, or please contact MEAN WELL for other options.

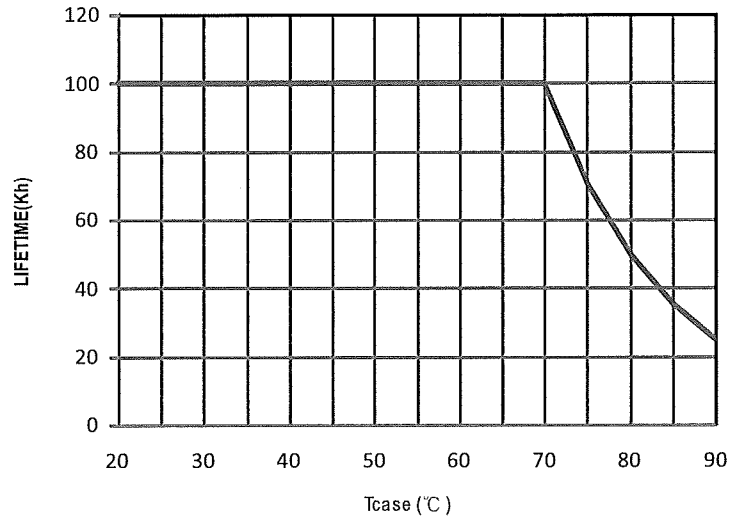


Using a switch and relay can turn ON/OFF the lighting fixture.

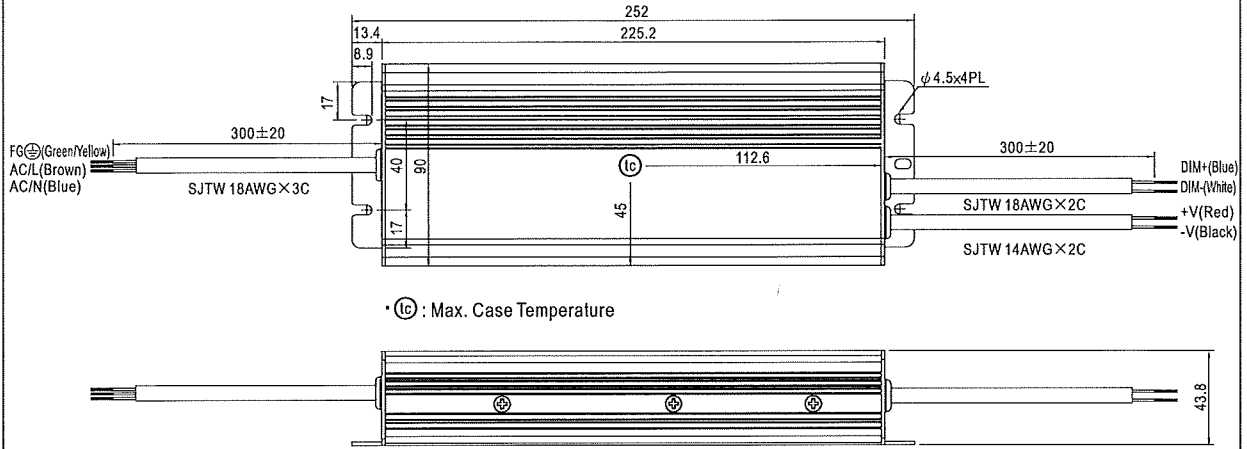




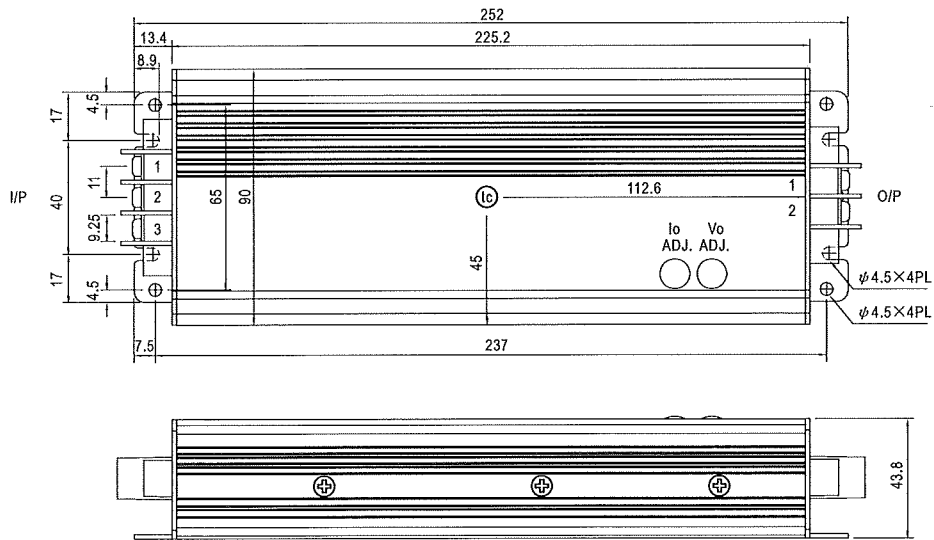
■ LIFETIME



※B-Type



※C-Type



AC Input Terminal Pin No. Assignment

Pin No.	Assignment
1	FG ⚡
2	AC/L
3	AC/N

DC Output Terminal Pin No. Assignment

Pin No.	Assignment
1	+V
2	-V

# Mouser Electronics

Authorized Distributor

Click to View Pricing, Inventory, Delivery & Lifecycle Information:

## Mean Well:

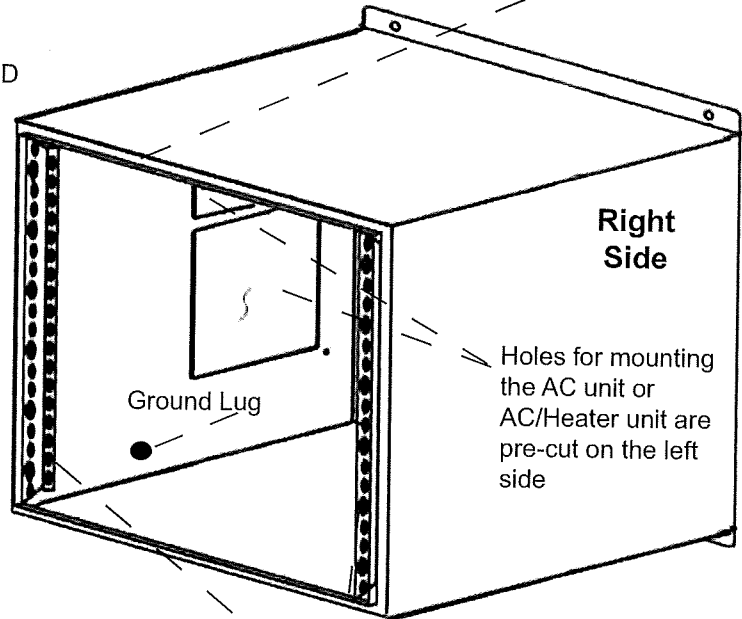
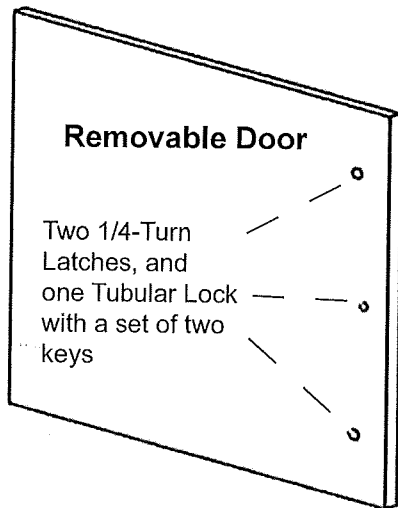
[HLG-320H-12](#) [HLG-320H-12A](#) [HLG-320H-12B](#) [HLG-320H-12C](#) [HLG-320H-12D](#) [HLG-320H-15](#) [HLG-320H-15A](#)  
[HLG-320H-15B](#) [HLG-320H-15C](#) [HLG-320H-15D](#) [HLG-320H-20](#) [HLG-320H-20A](#) [HLG-320H-20B](#) [HLG-320H-20C](#)  
[HLG-320H-20D](#) [HLG-320H-24](#) [HLG-320H-24A](#) [HLG-320H-24B](#) [HLG-320H-24C](#) [HLG-320H-24D](#) [HLG-320H-30](#)  
[HLG-320H-30A](#) [HLG-320H-30B](#) [HLG-320H-30C](#) [HLG-320H-30D](#) [HLG-320H-36](#) [HLG-320H-36A](#) [HLG-320H-36B](#)  
[HLG-320H-36C](#) [HLG-320H-36D](#) [HLG-320H-42](#) [HLG-320H-42A](#) [HLG-320H-42B](#) [HLG-320H-42C](#) [HLG-320H-42D](#)  
[HLG-320H-48](#) [HLG-320H-48A](#) [HLG-320H-48B](#) [HLG-320H-48C](#) [HLG-320H-48D](#) [HLG-320H-54](#) [HLG-320H-54A](#)  
[HLG-320H-54B](#) [HLG-320H-54C](#) [HLG-320H-54D](#) [HLG-320H-C1750](#) [HLG-320H-C3500](#) [HLG-320H-C2800](#) [HLG-320H-C1050](#) [HLG-320H-C2100](#) [HLG-320H-C1400](#) [HLG-320H-C700](#)

## BW-RACKACE and BW-RACKACHT

### Dimensions and Weight

- Outside dimensions *without* AC attached: 22"W x 24"H x 24"D
- Outside dimensions *with* AC unit attached are: 33"W x 24"H x 24"D
- Inside dimensions are: 21.5"W x 23.7"H x 23.8"D
- Rack rails are 12RU, 19" wide
- Enclosure weighs 105 lbs
- AC unit weighs 60 lbs
- Shipping skid weighs 45 lbs

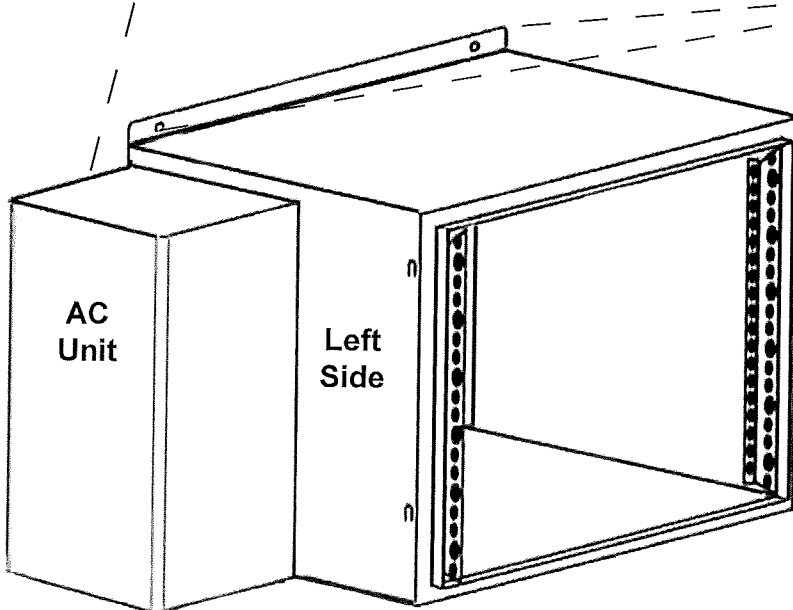
Rain-Channel and bulb-seal gasket for a tight fit with the door when the two 1/4-turn latches are closed



12 RU Rack-Rails

BW-RACKACE and BW-RACKACHT with AC unit or AC & Heater unit attached on the left-hand side

External 0.580" mounting hole dimensions are: 20" center-to-center from left to right and 25 3/8" center-to-center from top to bottom



### Mounting options

- Wall-Mount
- Free-Standing using angle-iron or pole-iron and a concrete slab (pictured)
- Pole-Mount using angle iron

