

DTE Energy - Gas Co.
Data Integrity and Technology
One Energy Plaza, 838-GO
City of Detroit, MI 48226

April 28, 2017

Richard Doherty, CED DPW Head Engineer
City Engineering Division, DPW
2 Woodward Ave, Suite 642
Detroit, Michigan 48226-3462

RE: Petition #1483

Dated: 4/19/2017

- Not involved. **See Remarks**
- Involved: but asking you to hold action on this petition until further notice.
- Involved but have no objection to the property change - - provided that an easement of the full width of the public right-of-way (street, alley or other public place) is reserved.
- Involved: the nature of our services, and the estimated costs of removing, rerouting or abandonment of such all gas mains and/or services

REMARKS:

Involved but have no objections to the property change, provided that the request to Convert to Easement in the North/South public alley, 20 ft. wd. in the block bounded by Temple, Cass Ave, Ledyard St and 2nd Ave. Reason being is that, DTE Energy Gas Co. has an existing Gas Main Line (3"- PLA/6"-CI-10# 1993). Otherwise, contact DTE Energy Gas Company Public Improvement Department: Kayla Shelton at 313-389-7211 (Supervisor) or Laura Forrester at 313-389-7261 (Gas Planner), for the estimated cost of our services in abandoning/removing/ and/or relocating/rerouting, including the survey, design and drawing of our utilities. See enclosed strip prints for your use and information regarding our gas main locations.

Please abide by Public Act 174, three (3) working days before you dig, dial toll free MISS DIG at: 1 – 800 – 482 – 7171.

DTE Energy Gas Leak Emergency Phone Number: 1- 800 – 947 – 5000.

Sincerely,

***RS* Russell E Thornton**

Drafter
Data Integrity and Technology

RET/
Enclosure



MASONIC TEMPLE DET

512

TEMPLE

3" -PLA/4"CI -10# 1981

100

3" -PLA/4"CI -10# 1993

2" -PLA/6"CI -10#1993

3" -PLA/6"STL -10# 1993

1993 3" -PLA-10#

1993 3" -PLA/6"CI -10#

PROP CONV TO EASEMENT 20

GN2

2" -PLA/4"CI -10# 1993

CASS

CLIFFORD

PROP 8" STL-60#
14' JPB 45204906

SPROAT

PROP 8" HD-60#
GAS MAIN
14' JOB 43089051

HD-60#

PROP 8" GAS MAIN

238 JOB 45204906

LEDYARD

71

60

SIBLEY

3" UN-DEAD

SHIELDING-6'

3" UN-DEAD

3" -PLA/6"CI -10# 1993

3" MD-10# 2015

3" MD-10# 2016

3" MD-10# 2015

60

6" UN-DEAD

3" -PLA/4"CI -1



STATE LAW ACT 174
3 WORKING DAYS
BEFORE YOU DIG
DIAL TOLL FREE
1-800-482-7171 OR 811

2560

DEAD

A19

A51

A45

A23

A17

A15

A13

A01

2625

2619

2615

2613

3" -10#

4" UN-DEAD

167

2" -PL 1992

2930
2920
2914
2906

10' NNBW 445 TEMPLE

145

155

60

13

4

17

2720

2716

12'

7

10'

14'

105'

14

14'

16'

14'

14'

167

6" UN-DEAD

3" -PLA/4"CI -1

167

80

11'

33'

56'

8" UN-DEAD

33'

10'

4'

4" UN-DEAD

30'

10'

24'

44'

17'

10'

7

14'

105'

14

14'

14'

16'

14'

14'

167

6" UN-DEAD

3" -PLA/4"CI -1

167

CI -10#

1993

3'

12'

19'

18'

10'

11'

34'

9'

15'

10'

4'

4" UN-DEAD

3" -PLA/4"CI -10# 1993

3'

10'

12'

7

10'

14'

105'

14

14'

14'

16'

14'

14'

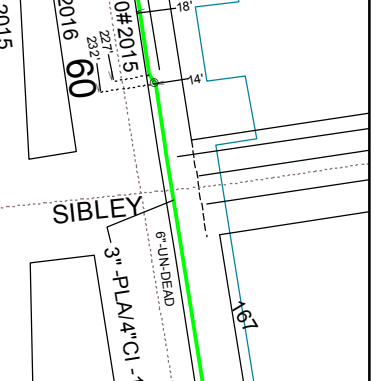
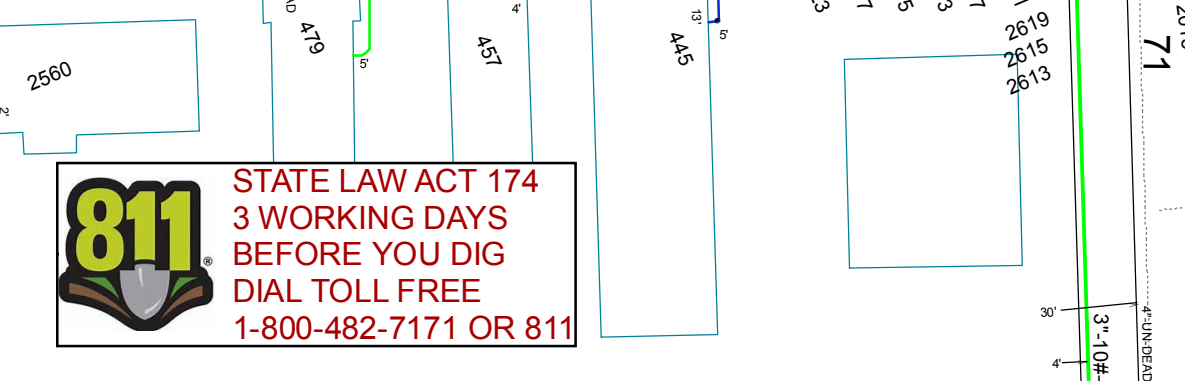
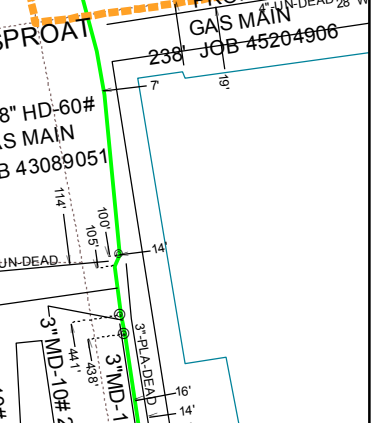
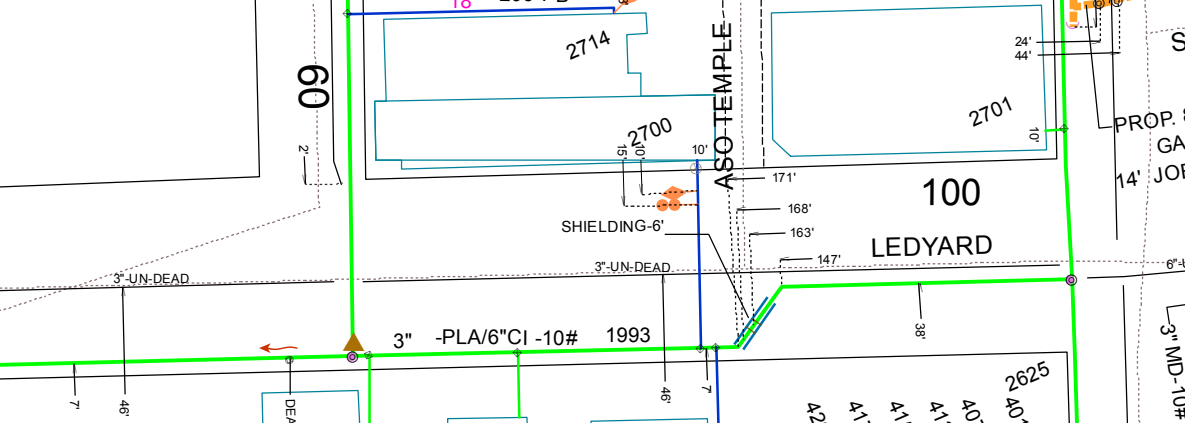
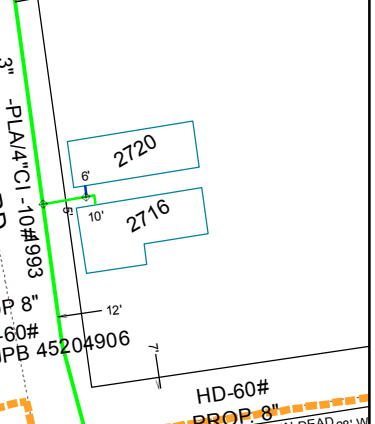
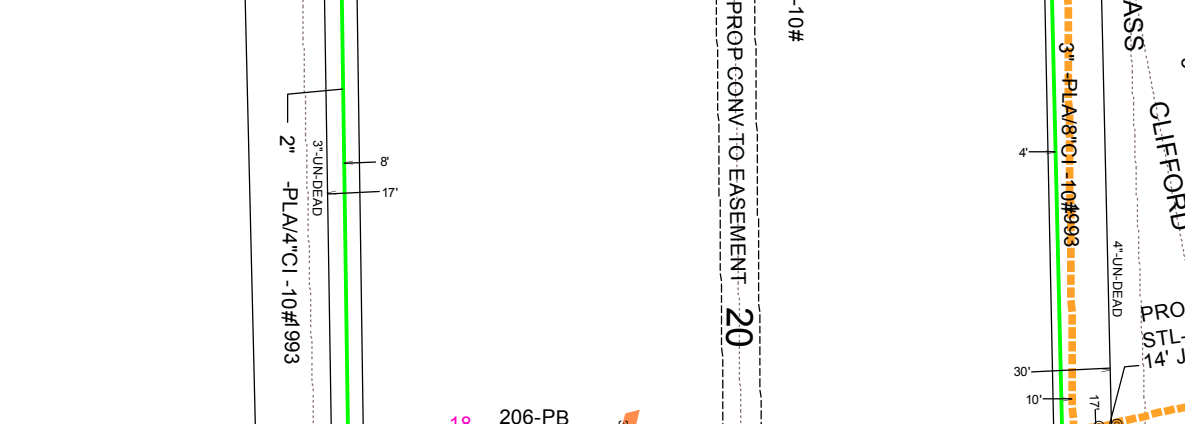
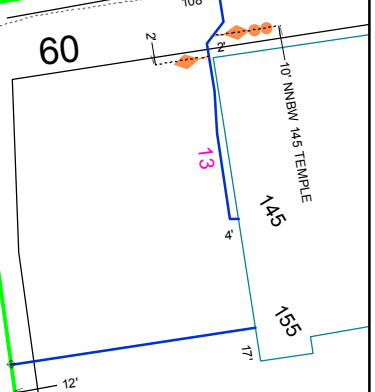
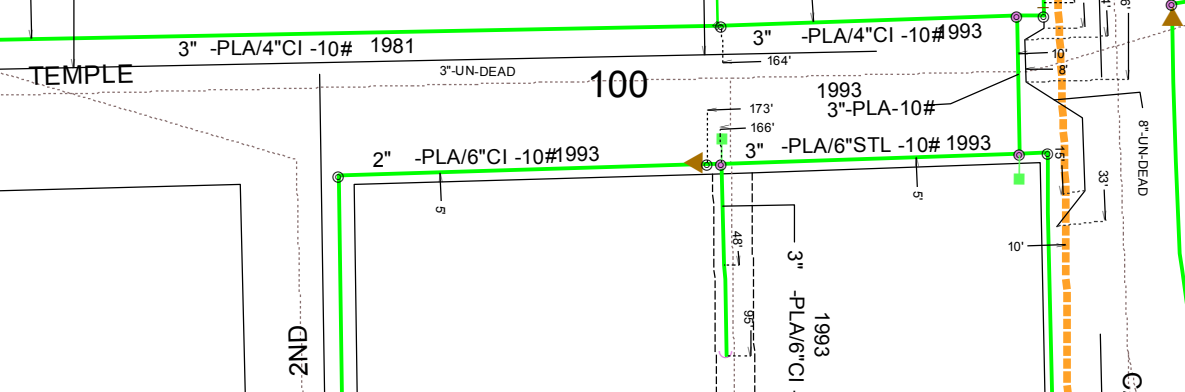
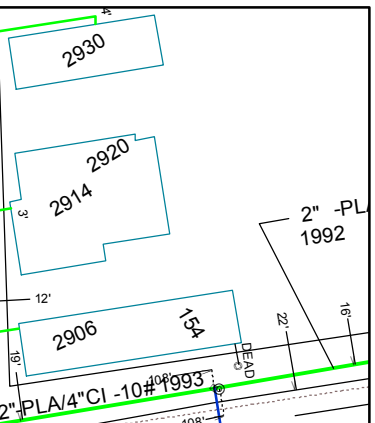
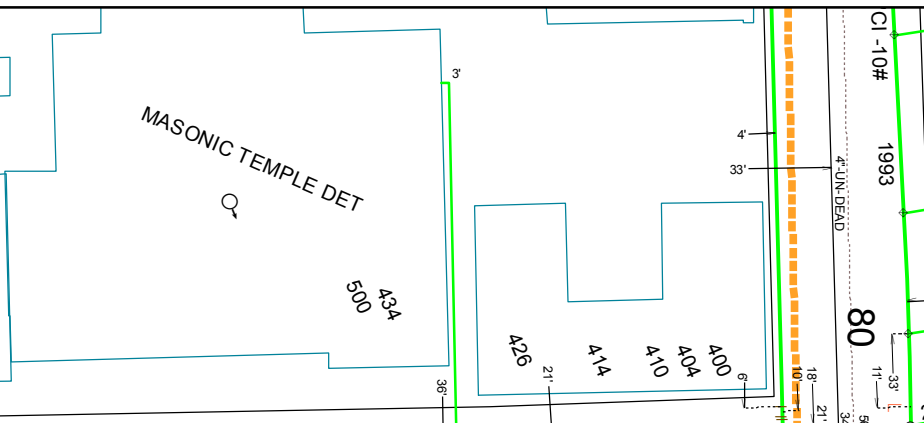
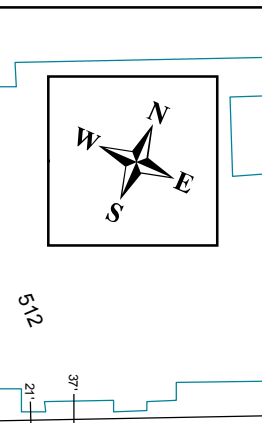
167

6" UN-DEAD

3" -PLA/4"CI -1

167

167



Gas GIS Legend

Service Symbols

- EndCap
- LoopedService
- Section
- EFV Relief Valve
- AbandonedService
- Aban. Service pipe

NOTE: Service line style is the same as the main it is tied into

Customer Events

- Service Event
- CUTCAP (CCtype, location)

AbandonedGasPipeSymbol

- Abandoned Gas Device
- End Cap
- Section Symbol

Gas Pipe Protection

- Casing
- Shield
- Sleeve

Land

- Bridge
- DrainCreek
- Easement
- LotLine
- RailRoad
- RightOfWay
- Tunnel
- Water
- Street Centerline
- Building
- Landmark
- BrownField
- Known Sites of Environmental Contamination DEQ Dec2008

CPAnode

- Single
- Multiple

CP Rectifier

- Rectifier

Test Point

- DOT
- Regular TW

Tracer Wire

- Tracer Wire

Gas Valve

- Main, Closed
- Main, Open
- Service, Closed
- Service, Open

Regulator Station

- District
- Secondary
- Service

Controllable Fitting

- PCF Pressure Control Fitting
- SSF Short Stop
- Stoppie Fitting
- Distribution Tiein
- Subtransmission Tiein
- Transmission Tiein

NonControllableFitting

- Branch
- Cap
- Coupling
- Ell
- Insulated
- Reducer
- Section
- Tee
- Transition
- <all other values>

Material Type

- CU - Copper
- CI - Cast Iron
- PLA - Plastic
- STL - Bare Steel
- STL - Coated Steel
- PLA - Plastic, Joint Trench
- OTR - Other
- UN - Unknown
- WI - Wrought Iron
- <all other values>
- Inactive - all material types

Main Lines Styles

- In Design Main (Proposed)
- Distribution Main
- Distribution - Joint Trench
- Subtransmission Main
- Transmission
- Exposed Pipe (Coated Steel)
- Pipe Lining (CI or WI)
- AbandonedGasPipe

Other Symbols

- Drip
- Flow Arrow
- Foreign Utility Pipe
- Public Improvement
- Pressure Monitoring Device
- Leak Report - Leak Repair
- Automated Repairs
- LowPoint
- Summit

Scaled Areas

- 10, 30, 50 SCALE