

**DTE Energy – Gas Co.
Data Integrity and Technology
One Energy Plaza, 838-GO
City of Detroit, MI 48226**

June 8, 2017

Richard Doherty, CED DPW Head Engineer
City Engineering Division, DPW
2 Woodward Ave, Suite 642
Detroit, Michigan 48226-3462

RE: Petition #1481: Request to Convert to Easement the East/West and North/South public alleys, 18 Ft. Wd. in the block bounded by Dexter, Pasadena, Holmur Ave and Oakman Blvd.

- Not involved. **See Remarks**
- Involved: but asking you to hold action on this petition until further notice.
- Involved but have no objection to the property change - - provided that an easement of the full width of the public right-of-way (street, alley or other public place) is reserved.
- Involved: the nature of our services, and the estimated costs of removing, rerouting or abandonment of such all gas mains and/or services

REMARKS:

DTE Energy–Gas Company has no involvement, nor objection to Petition #1481 as mentioned above. See enclosed strip print and attached notice of public hearing, for your use and information.

Please abide by Public Act 174, three (3) working days before you dig, dial toll free MISS DIG at: 1 – 800 – 482 – 7171.

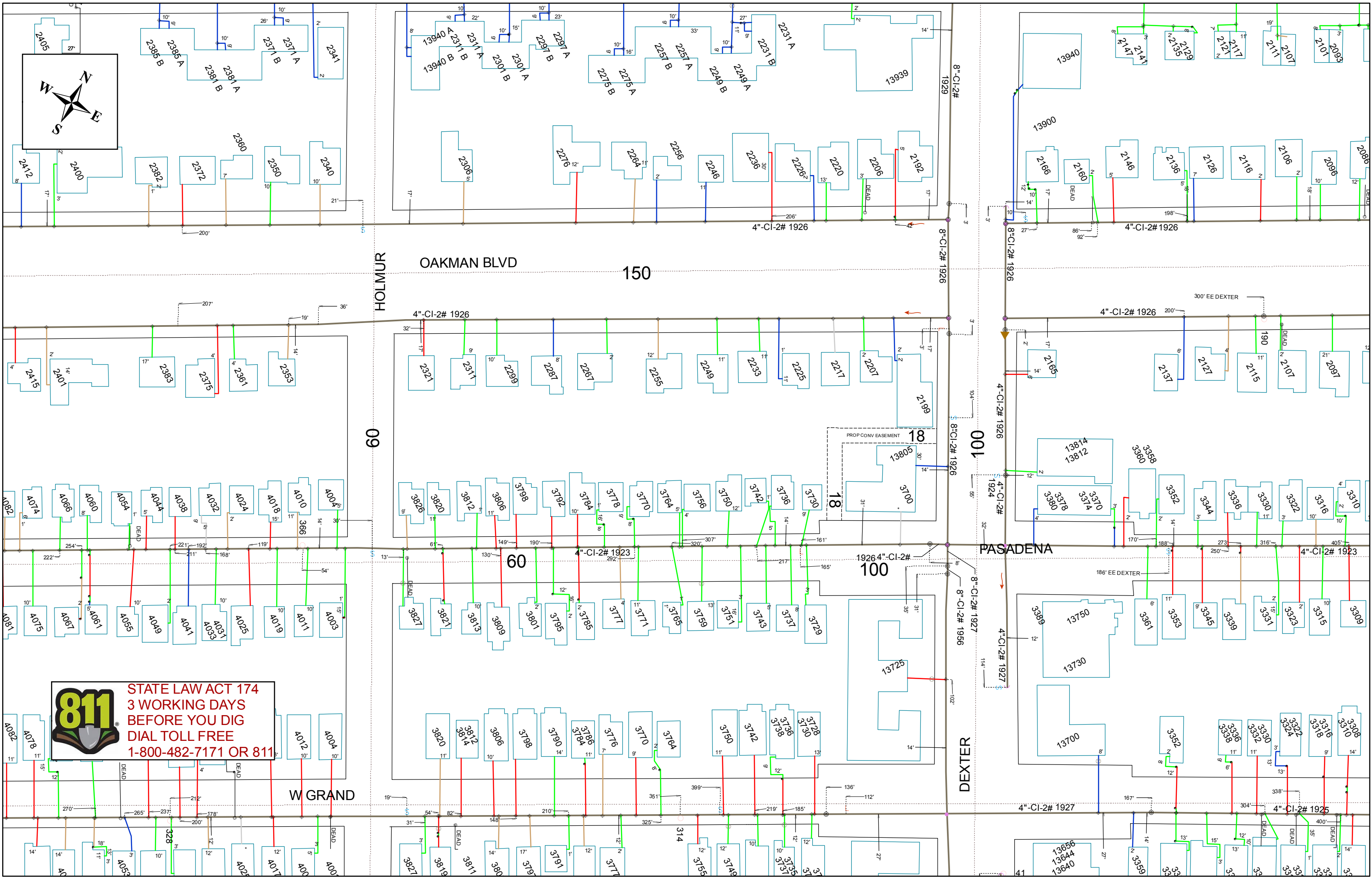
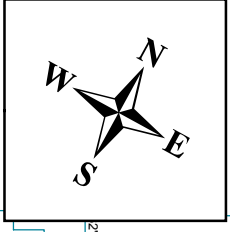
DTE Energy Gas Leak Emergency Phone Number: 1- 800 – 947 – 5000.

Sincerely,

***RS* Russell & Thornton**

Drafter
Data Integrity and Technology

RET/
Enclosure



811 STATE LAW ACT 174
3 WORKING DAYS
BEFORE YOU DIG
DIAL TOLL FREE
1-800-482-7171 OR 811

HOLMUR

OAKMAN BLVD 150

60

60

001

PASADENA

DEXTER

W GRAND

Gas GIS Legend

Service Symbols

- EndCap
- LoopedService
- Section
- EFV Relief Valve
- AbandonedService
- Aban. Service pipe

NOTE: Service line style is the same as the main it is tied into

Customer Events

- Service Event
- CUTCAP (CCtype, location)

AbandonedGasPipeSymbol

- Abandoned Gas Device
- End Cap
- Section Symbol

Gas Pipe Protection

- Casing
- Shield
- Sleeve

Land

- Bridge
- DrainCreek
- Easement
- LotLine
- RailRoad
- RightOfWay
- Tunnel
- Water
- Street Centerline
- Building
- Landmark
- BrownField
- Known Sites of Environmental Contamination DEQ Dec2008

CPAnode

- Single
- Multiple

CP Rectifier

- Rectifier

Test Point

- DOT
- Regular TW

Tracer Wire

- Tracer Wire

Gas Valve

- Main, Closed
- Main, Open
- Service, Closed
- Service, Open

Regulator Station

- District
- Secondary
- Service

Controllable Fitting

- PCF Pressure Control Fitting
- SSF Short Stop
- Stoppie Fitting
- Distribution Tiein
- Subtransmission Tiein
- Transmission Tiein

NonControllableFitting

- Branch
- Cap
- Coupling
- Ell
- Insulated
- Reducer
- Section
- Tee
- Transition
- <all other values>

Material Type

- CU - Copper
- CI - Cast Iron
- PLA - Plastic
- STL - Bare Steel
- STL - Coated Steel
- PLA - Plastic, Joint Trench
- OTR - Other
- UN - Unknown
- WI - Wrought Iron
- <all other values>
- Inactive - all material types

Main Lines Styles

- In Design Main (Proposed)
- Distribution Main
- Distribution - Joint Trench
- Subtransmission Main
- Transmission
- Exposed Pipe (Coated Steel)
- Pipe Lining (CI or WI)
- AbandonedGasPipe

Other Symbols

- Drip
- Flow Arrow
- Foreign Utility Pipe
- Public Improvement
- Pressure Monitoring Device
- Leak Report - Leak Repair
- Automated Repairs
- LowPoint
- Summit

Scaled Areas

- 10, 30, 50 SCALE