

DTE Energy - Gas Co.  
Data Integrity and Technology  
One Energy Plaza, 838-GO  
City of Detroit, MI 48226

April 27, 2017

**Richard Doherty, CED DPW Head Engineer**  
City Engineering Division, DPW  
2 Woodward Ave, Suite 642  
Detroit, Michigan 48226-3462

**RE: Petition #1432 REVISED**

**Dated: 4/7/2017**

- Not involved. **See Remarks**
- Involved: but asking you to hold action on this petition until further notice.
- Involved but have no objection to the property change - - provided that an easement of the full width of the public right-of-way (street, alley or other public place) is reserved.
- Involved: the nature of our services, and the estimated costs of removing, rerouting or abandonment of such all gas mains and/or services

**REMARKS:**

**Involved but have no objections to the property change, provided that the request to Convert to Easement at Clifford Ave 60 Ft. Wd in the area bounded by Cass, Park Ave, Henry St and Fisher Fwy Service Dr. Reason being is that, DTE Energy Gas Co. has existing Gas Main Lines (3"- MD-10# 2015) and (3"-STL-10# 2015) on Clifford located at 3' WE PL and a Gas Main Line (2"-MD-10# 2015) on Henry and Gas Service (1-1/4-MD-2004) located at 103' EE of Clifford at 153 Henry. Otherwise, contact DTE Energy Gas Company Public Improvement Department: Kayla Shelton at 313-389-7211 (Supervisor) or Laura Forrester at 313-389-7261 (Gas Planner), for the estimated cost of our services in abandoning/removing/ and/or relocating/rerouting, including the survey, design and drawing of our utilities. See enclosed strip prints for your use and information regarding our gas main locations.**

**Please abide by Public Act 174, three (3) working days before you dig, dial toll free MISS DIG at: 1 – 800 – 482 – 7171.**

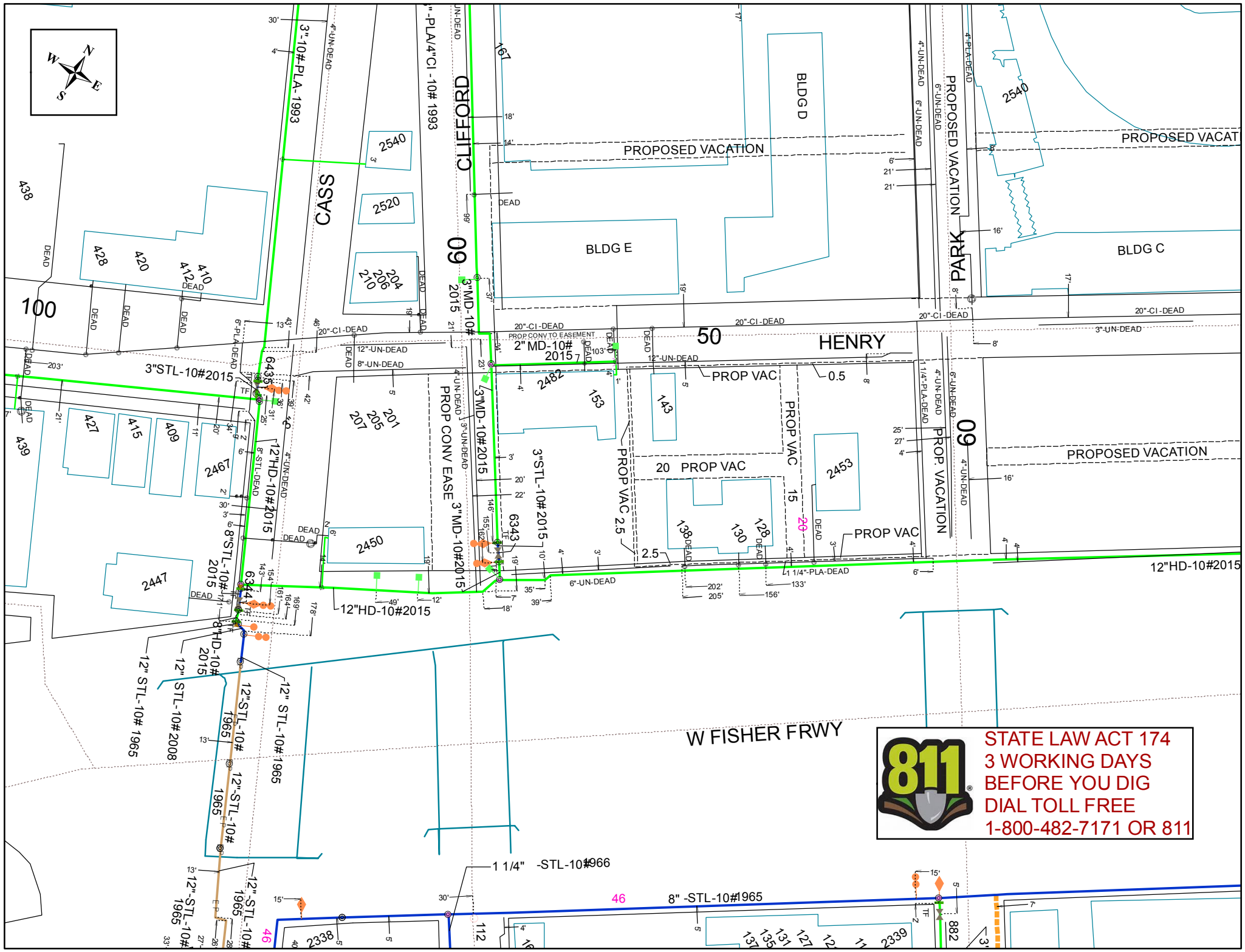
**DTE Energy Gas Leak Emergency Phone Number: 1- 800 – 947 – 5000.**

Sincerely,

***RS* Russell E Thornton**

Drafter  
Data Integrity and Technology

RET/  
Enclosure



**STATE LAW ACT 174**  
**3 WORKING DAYS**  
**BEFORE YOU DIG**  
**DIAL TOLL FREE**  
**1-800-482-7171 OR 811**

# Gas GIS Legend

## Service Symbols

- EndCap
- LoopedService
- Section
- EFV Relief Valve
- AbandonedService
- Aban. Service pipe

NOTE: Service line style is the same as the main it is tied into

## Customer Events

- Service Event
- CUTCAP (CCtype, location)

## AbandonedGasPipeSymbol

- Abandoned Gas Device
- End Cap
- Section Symbol

## Gas Pipe Protection

- ==== Casing
- ==== Shield
- ==== Sleeve

## Land

- ==== Bridge
- ==== DrainCreek
- Easement
- ==== LotLine
- ==== RailRoad
- ==== RightOfWay
- Tunnel
- ==== Water
- Street Centerline
- Building
- Landmark
- BrownField
- Known Sites of Environmental Contamination DEQ Dec2008

## CPAnode

- Single
- Multiple

## CP Rectifier

- Rectifier

## Test Point

- DOT
- Regular TW

## Tracer Wire

- Tracer Wire

## Gas Valve

- Main, Closed
- Main, Open
- Service, Closed
- Service, Open

## Regulator Station

- District
- Secondary
- Service

## Controllable Fitting

- PCF Pressure Control Fitting
- SSF Short Stop
- Stoppie Fitting
- Distribution Tiein
- Subtransmission Tiein
- Transmission Tiein

## NonControllableFitting

- Branch
- Cap
- Coupling
- == EII
- Insulated
- Reducer
- Section
- Tee
- Transition
- <all other values>

## Material Type

- CU - Copper
- CI - Cast Iron
- PLA - Plastic
- STL - Bare Steel
- STL - Coated Steel
- PLA - Plastic, Joint Trench
- OTR - Other
- UN - Unknown
- WI - Wrought Iron
- <all other values>
- Inactive - all material types

## Main Lines Styles

- In Design Main (Proposed)
- Distribution Main
- Distribution - Joint Trench
- Subtransmission Main
- Transmission
- Exposed Pipe (Coated Steel)
- Pipe Lining (CI or WI)
- AbandonedGasPipe

## Other Symbols

- Drip
- Flow Arrow
- Foreign Utility Pipe
- Public Improvement
- Pressure Monitoring Device
- Leak Report - Leak Repair
- Automated Repairs
- LowPoint
- Summit

## Scaled Areas

- 10, 30, 50 SCALE