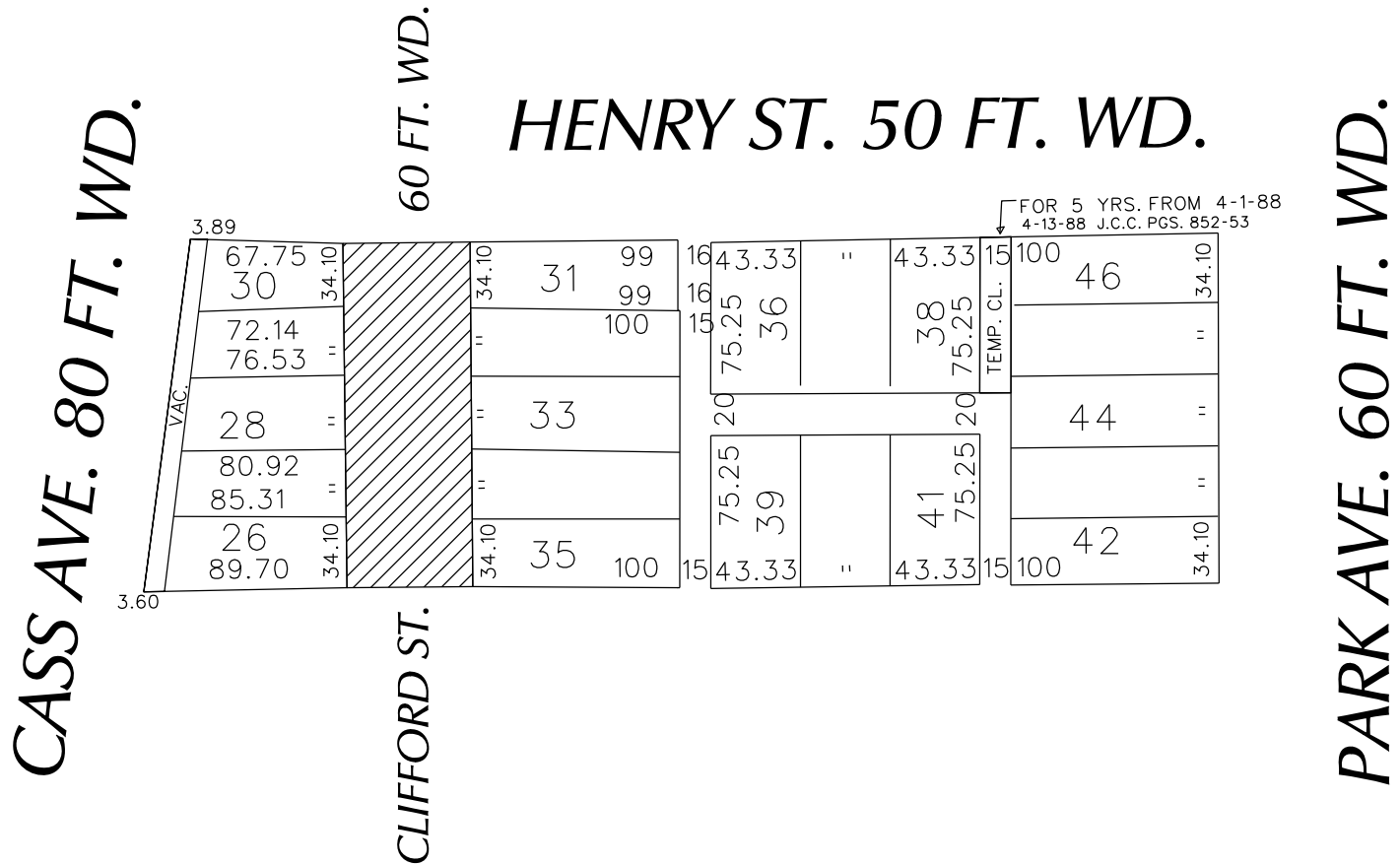


PETITION NO. 1432  
 HARRY'S DETROIT BAR  
 C/O DYKEMA GOSSETT PLLC  
 2482 CLIFFORD ST.  
 DETROIT, MICHIGAN 48201  
 C/O CARL GOSSETT  
 PHONE NO. 313 568-5422



**FISHER FWY. SERVICE DR.**  
 FISHER FREEWAY (I-75)

 - REQUESTED CONVERSION TO EASEMENT

(FOR OFFICE USE ONLY)

CARTO 29 E

B					
A					
DESCRIPTION		DRWN	CHKD	APPD	DATE
REVISIONS					
DRAWN BY		CHECKED			
DATE		APPROVED			
03-28-17					

REQUEST TO CONVERT TO EASEMENT  
 CLIFFORD AVE. 60 FT. WD.  
 IN THE AREA BOUND BY  
 CASS, PARK AVE., HENRY ST.  
 AND FISHER FWY. SERVICE DR.

CITY OF DETROIT CITY ENGINEERING DEPARTMENT SURVEY BUREAU	
JOB NO.	01-01
DRWG. NO.	X 1432