

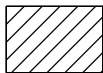
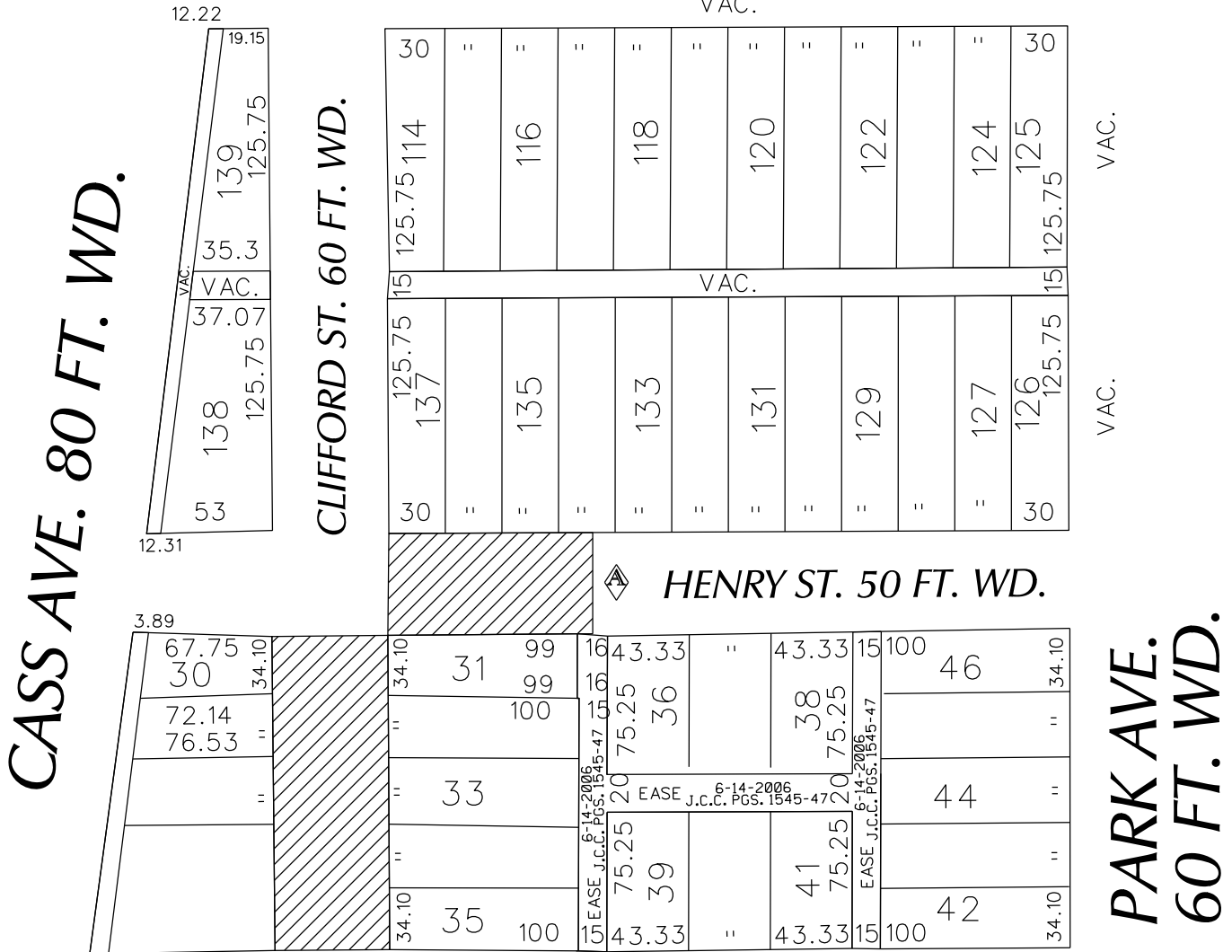
PETITION NO. 1432
 HARRY'S DETROIT BAR
 C/O DYKEMA GOSSETT PLLC
 2482 CLIFFORD ST.
 DETROIT, MICHIGAN 48201
 C/O CARL GOSSETT
 PHONE NO. 313 568-5422

"REVISED"



SIBLEY ST. 50 FT. WD.

VAC.



- REQUESTED CONVERSION TO EASEMENT

(FOR OFFICE USE ONLY)

CARTO 29 E

B						REQUEST TO CONVERT TO EASEMENT CLIFFORD ST. 60 FT. WD. AND A PORTION OF HENRY ST. 50 FT. WD. IN THE AREA BOUND BY CASS, PARK AVE., SIBLEY ST. AND FISHER FWY. SERVICE DR.	CITY OF DETROIT CITY ENGINEERING DEPARTMENT SURVEY BUREAU
A	ADDING CONVERSION TO EASEMENT TO A PORTION OF PARK AVE. 60 FT. WD.	WLW	KSM	KSM	4/07/17		
DESCRIPTION		DRWN	CHKD	APPD	DATE		
REVISIONS							
DRAWN BY	WLW	CHECKED				JOB NO.	01-01
DATE	03-28-17	APPROVED				DRWG. NO.	X 1432