



CITY OF DETROIT
DEPARTMENT OF PUBLIC WORKS
CITY ENGINEERING DIVISION

COLEMAN A. YOUNG MUNICIPAL CENTER
2 WOODWARD AVE. SUITE 601
DETROIT, MICHIGAN 48226
PHONE: (313) 224-3949 • TTY: 711
FAX: (313) 224-3471
WWW.DETROITMI.GOV

February 26th, 2020

Petitioner,

RE: Petition No. 1432

Petition No. 1432 of Harry's Detroit Bar request to vacate and convert to easement a segment of Henry Street Between Clifford Street and Park Avenue and a segment of Clifford Street between Henry Street and Fisher Freeway Service Drive.

The petition was referred to the City Engineering Division – DPW for investigation (utility review) and report. This is our report.

After reviewing the petitioner's request an investigation was conducted to determine the feasibility of the proposed vacation. The result of the investigation has determined that the requested vacation is not in the interest of the City at the present time. With ongoing efforts to improve the Cass Avenue and Woodward Avenue corridors the City would appreciate further discussion regarding the planning and vision of the petitioner.

The Department of Public Works, City Engineering Division denies this petition request. Please receive and file this report for you reference.

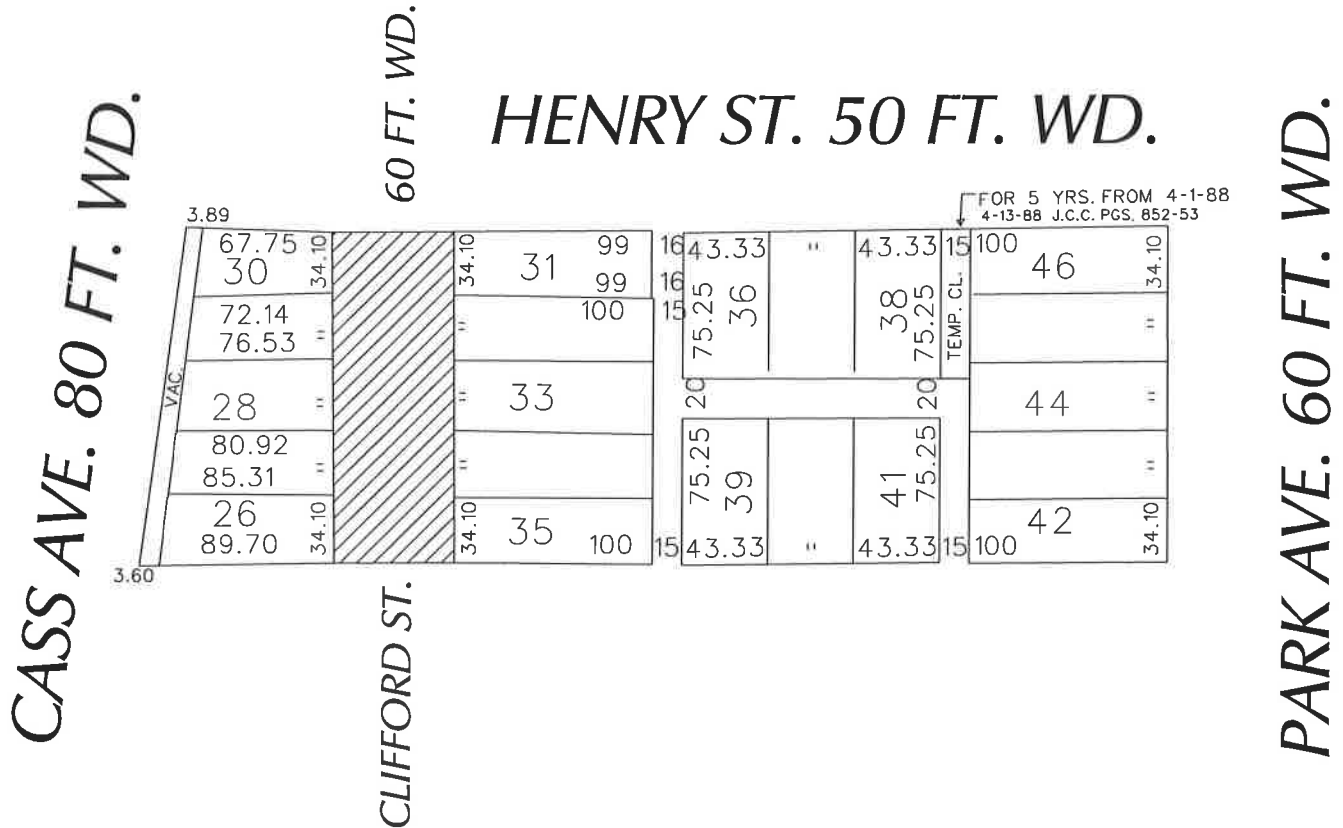
Respectfully submitted,

Richard Doherty, City Engineer
City Engineering Division – DPW

JMK/

Cc: Ron Brundidge, Director – DPW
Mayor's Office – City Council Liaison

PETITION NO. 1432
 HARRY'S DETROIT BAR
 C/O DYKEMA GOSSETT PLLC
 2482 CLIFFORD ST.
 DETROIT, MICHIGAN 48201
 C/O CARL GOSSETT
 PHONE NO. 313 568-5422



FISHER FWY. SERVICE DR.
 FISHER FREEWAY (I-75)

- REQUESTED CONVERSION TO EASEMENT

(FOR OFFICE USE ONLY)

CARTO 29 E

B						REQUEST TO CONVERT TO EASEMENT CLIFFORD AVE. 60 FT. WD. IN THE AREA BOUND BY CASS, PARK AVE., HENRY ST. AND FISHER FWY. SERVICE DR.	CITY OF DETROIT CITY ENGINEERING DEPARTMENT SURVEY BUREAU
A							JOB NO. 01-01
	DESCRIPTION	DRWN	CHKD	APPD	DATE		DRWG. NO. X 1432
	REVISIONS						
	DRAWN BY	CHECKED					
	DATE	APPROVED					