



City of Detroit
Inter-Departmental Communication

TO: Richard Doherty, City Engineer
City Engineering/Department of Public Works

FROM: Debra Singleton, Engineer
Detroit Water and Sewerage Department

DATE: September 21, 2017

RE: Petition No. 1416
Request To Convert To Easement The East/West And North/South Alley In The
Block Bound By Area Bound By St. Aubin, Gratiot, Dubois, And E. Vernor HWY.

The above petition received by this office has been reviewed. With regard to DWSD's interests, our comments are as follows

- Our records indicate that there is a sewer in the requested easements. DWSD has no objections to the requested conversion to easements provided that the attached Provisions for Conversion to Easement are strictly followed.

If you have any questions, please call me at (313) 267-8309 or Mohammed Fa Siddique at (313)-964-9245.

Sincerely,

Debra Singleton
Engineer
Permits Section

DS/MS/gl
Attachments

CC: Mohamad Farhat, CSF

Michael Duggan, Mayor

City of Detroit
**City Engineering Division, Department of Public Works
Survey Bureau**

NOTICE OF PROPOSED CHANGE IN PROPERTY

Date: 03/22/2017

Petition: x1416

- | | |
|--|--|
| <input type="checkbox"/> AT&T Telecommunication | <input type="checkbox"/> Berm Use |
| <input type="checkbox"/> Comcast Television (CATV) | <input checked="" type="checkbox"/> Conversion to Easement |
| <input type="checkbox"/> Detroit Edison (DTE) | <input type="checkbox"/> Dedication |
| <input type="checkbox"/> Fire Department | <input type="checkbox"/> Encroachment |
| <input type="checkbox"/> Great Lakes Water Authority | <input type="checkbox"/> Temporary Closing |
| <input type="checkbox"/> Land Bank Authority | <input type="checkbox"/> Vacation |
| <input type="checkbox"/> Michcon (DTE) | |
| <input type="checkbox"/> Planning & Development Department | |
| <input type="checkbox"/> Public Lighting Authority | |
| <input type="checkbox"/> Public Lighting Department | |
| <input type="checkbox"/> Police Department | |
| <input type="checkbox"/> Solid Waste Division, DPW | |
| <input type="checkbox"/> Street Design Bureau, DPW | |
| <input type="checkbox"/> Street Maintenance Division, DPW | |
| <input type="checkbox"/> Traffic Engineering Division, DPW | |
| <input type="checkbox"/> Water and Sewerage Department | |
| <input type="checkbox"/> _____ | |

A petition drawing is attached. Property shown on the attached print is proposed to be changed as indicated. Kindly report (using the back of this sheet) the nature of your services, if any affected by the proposed change and the estimated costs of removing and rerouting such services (if necessary).

Please return one copy to City Engineering Division, DPW within two weeks of the submittal date. Retain one copy and print for you file.

Ron Brundidge, Director, Department of Public Works

By: Richard Doherty, CED DPW
City Engineer

**TO: City Engineering Division, DPW
2 Woodward Ave., Suite 642
Detroit, Michigan 48226-3462
Survey Bureau: 313-224-3970**

Petition: x1416

The proposed change in property (referred to on the other side of this sheet) would affect our services as follows:

- Not Involved

- Involved; but asking you to hold action on this petition until further notice.

- Involved; but no objections to the property change.

- Involved; objection to the property change.

- Involved; but no objections to the property change...provided as easement of the full width of the public right-of-way (street, alley or other public place) is reserved.

- Involved; the nature of our services and the estimated costs of removing and/or rerouting such services are:

(Utility or City Department)

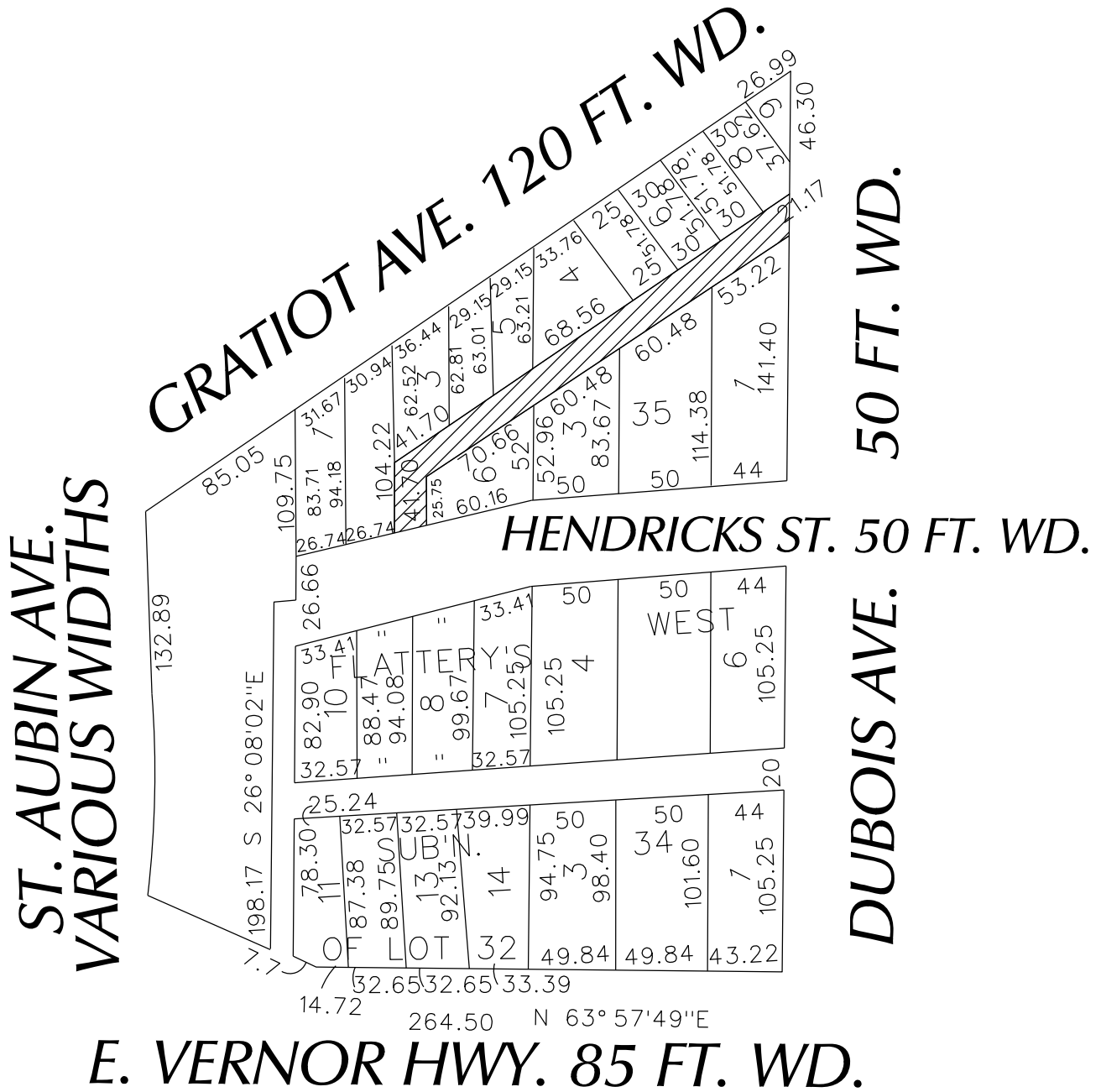
By

Title

Date

Area code – Telephone number

PETITION NO. 1416
 RHOADES MCKEE
 55 CAMPAU AVE. NW
 GRAND RAPIDS, MICHIGAN 48503
 SCOTT J. STEINER
 PHONE NO. 616 235-3500



 - REQUESTED CONVERSION TO EASEMENT

(FOR OFFICE USE ONLY)

CARTO 39 E

B					
A					
DESCRIPTION	DRWN	CHKD	APPD	DATE	
REVISIONS					
DRAWN BY	WLW	CHECKED			
DATE	03-20-17	APPROVED			

REQUEST TO CONVERT TO EASEMENT
 THE EAST/WEST AND NORTH/SOUTH
 PUBLIC ALLEY, 21.17 FT. WD.
 IN THE AREA BOUND BY
 ST. AUBIN, GRATIOT, DUBOIS AVE.
 AND E. VERNOR HWY.

CITY OF DETROIT CITY ENGINEERING DEPARTMENT SURVEY BUREAU	
JOB NO.	01-01
DRWG. NO.	X 1416

PROVISIONS FOR CONVERSION TO EASEMENT

1. An easement, the full width of the existing right of way, is reserved for the Detroit Water and Sewerage Department for the purpose of installing, maintaining, repairing, removing, or replacing any sewers, water mains, fire hydrants and appurtenances, with the right of ingress and egress at any time to, and over said easement for the purpose above set forth.

Free and easy access to the sewers, water mains, fire hydrants and appurtenances within the easement is required for Detroit Water and Sewerage Department equipment, including the use of backhoes, bull dozers, cranes or pipe trucks, and other heavy construction equipment, as necessary for the alteration or repair of the sewer or water main facilities.

The Detroit Water and Sewerage Department retains the right to install suitable permanent main location guide posts over its water mains at reasonable intervals and at points of deflection.

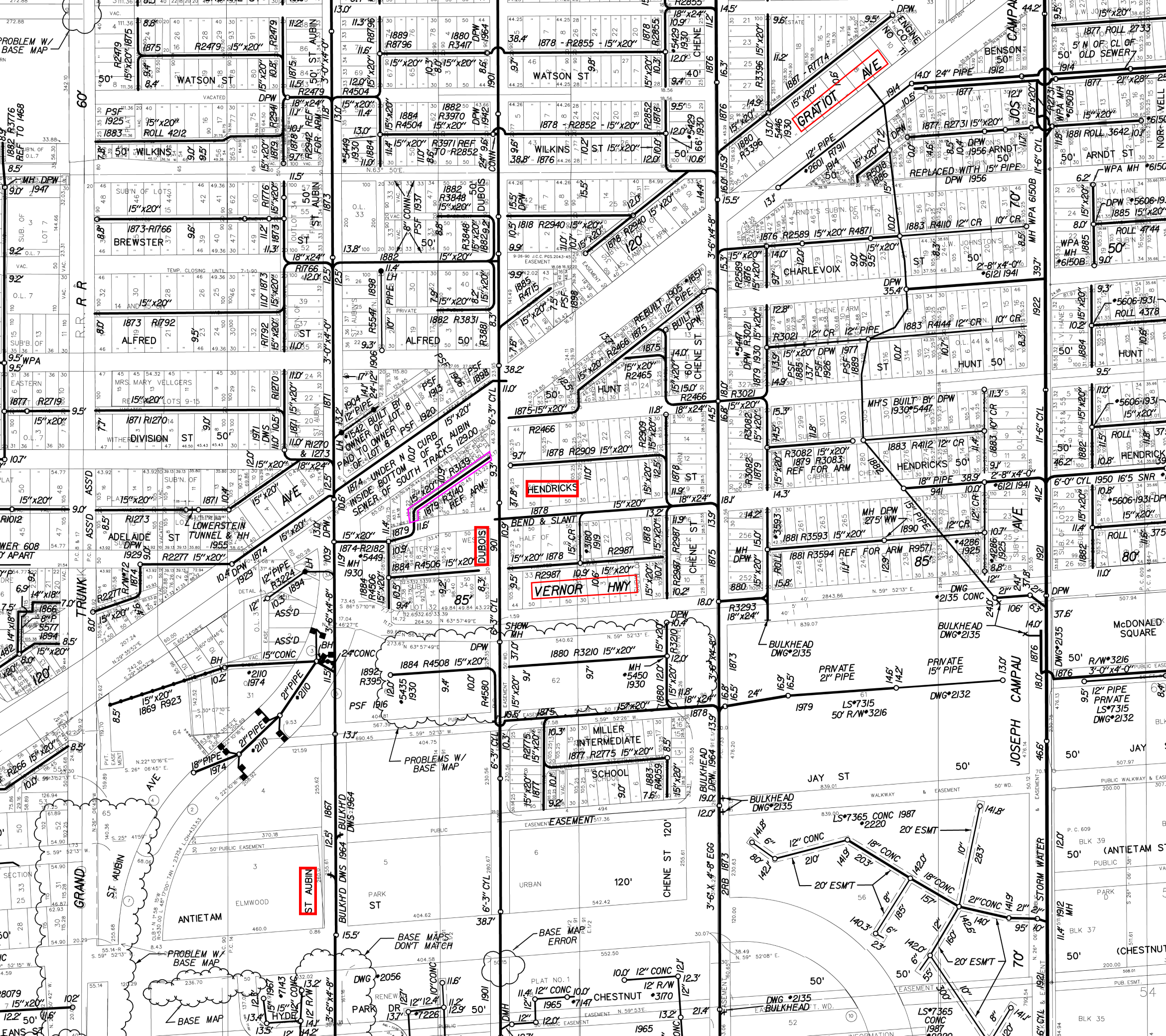
2. Said owners of the adjoining property, for themselves, their heirs and assigns, agree that no building or structure of any nature whatsoever, including fences, porches, patios, balconies, etc., shall be built upon or over said easement, or that no grade changes or storage of materials shall be made within said easement without prior written approval and agreement with the Detroit Water and Sewerage Department.
3. If at any time in the future, the owners of any lots abutting on said vacated right of way shall request the removal and/or relocation of the aforementioned utilities in said easement, such owners shall pay all costs incident to such removal and/or relocation. It is further provided that if sewers, water mains, and/or appurtenances in said easement shall break or be damaged as a result of any action on the part of the owner, or assigns, then in such event, the owner or assigns shall be liable for all costs incident to the repair of such broken or damaged sewers and water mains, and shall also be liable for all claims for damages resulting from his action.

These provisions shall be made part of the City Council's Vacating Resolution.

04/08/13

Detroit Water & Sewerage Department (DWSD) Notes:

- Our records indicate that there are water mains and sewers which are located in the vicinity of the proposed project limits.
- It is DWSD's requirement that any proposed utility crossing DWSD water mains or sewers perpendicularly must maintain a minimum of 18 inches vertical clearance. Also any proposed utility running adjacent to DWSD water mains and sewers must maintain a minimum of 5 feet lateral clearance including any conduit and/or manholes walls. No utility is allowed to run along the top of the water main or sewer.
- There are possibilities of several water and sewer service lines crossing in the vicinity of proposed work, field verify their location and depth to maintain our required clearance.
- Detroit Water and Sewerage Department (DWSD) prohibits the use of heavy construction equipment (bulldozers, backhoes, extremely large rollers, etc.) and or storage of building material directly over or near our mains or sewers. DWSD also prohibits the use of cranes and balls or hydraulic rams for pavement removal where the DWSD facilities are involved. If the water main or sewer facilities are broken or damaged as a result of any action on the part of the contractor, then the contractor shall be liable for all costs incidental to the repair of such broken or damaged water main/sewer facilities and appurtenances. The contractor shall waive all claims for damages under such circumstances.
- For any proposed work that involves DWSD utilities (water mains and/or sewers), an approval and a permit is required from DWSD before the commencement of work.



PROBLEM W/ BASE MAP

1882 R3716 REF TO 1468

9.0' MH DPN 1947

9.2' O.L. 7

9.2' O.L. 7

9.5' WPA 9.5'

1877 R2719

10.7'

9.0'

7.0'

7.5'

8.5'

8.5'

8.5'

8.5'

8.5'

8.5'

8.5'

8.5'

8.5'

RR R R

GRAND

ST AUBIN

ST AUBIN

1873-R1766

BREWSTER

1873-R1792

ALFRED

1871-R1270

DIVISION ST

1871-R1270

ADELAIDE

1871-R1270

1869-R923

1874-R2182

1892-R395

1892-R395

1892-R395

1892-R395

1892-R395

1875

1875

1875

1875

1875

1875

1875

1875

1875

1875

1875

1875

1875

1875

1875

1875

1875

1875

1875

1875

1875

1875

1875

1875

1875

1875

1875

1875

1875

1875

1875

1875

1875

1875

1875

1875

1875

1875

1875

1875

1875

1875

1875

1875

1875

1875

1875

1875

1875

1875

1875

1875

1875

1875

1875

1875

1875

1875

1875

1875

1875

1875

1875

1875

1875

1875

1875

1875

1875

1875

1875

1875

1875

1875

1875

1875

1875

1875

1875

1875

1875

1875

1875

1875

1875

1875

1875

1875

1875

1875

1875

1875

1875

1875

1875

1875

1875

1875

1875

1875

1875

1875

1875

1875

1875

1875

1875

1875

1875

1875

1875

1875

1875

1875

1875

1875

1875

1875

1875

1875

1875

1875

1875

1875

1875

1875

1875

1875

1875

1875

1875

1875

1875

1875

1875

1875

1875

1875

1875

1875

1875

1875

1875

1875

1875

1875

1875

1875

1875

1875

1875

1875

1875

1875

1875

1875

1875

1875

1875

1875

1875

1875

1875

1875

1875

1875

1875

1875

1875

1875

1875

1875

1875

1875

1875

1875

1875

1875

1875

1875

1875

1875

1875

1875

1875

1875

1875

1875

1875

1875

1875

1875

1875

1875

1875

1875

1875

1875

1875

1875

1875

1875

1875

1875

1875

1875

1875

1875

1875

1875

1875

1875

1875

1875

1875

1875

1875

1875

1875

1875

1875

1875

1875

1875

1875

1875

1875

1875

1875

1875

1875

1875

1875

1875

1875

1875

1875

1875

1875

1875

1875

1875

1875

1875

1875

1875

1875

1875

1875

1875

1875

1875

1875

1875

1875

1875

1875

1875

1875

1875

1875

1875

1875

1875

1875

1875

1875

1875

1875

1875

1875

1875

1875

1875

1875

1875

1875

1875

1875

1875

1875

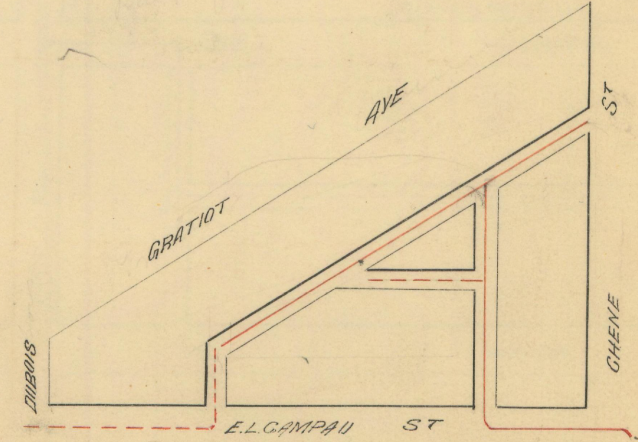
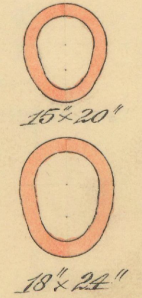
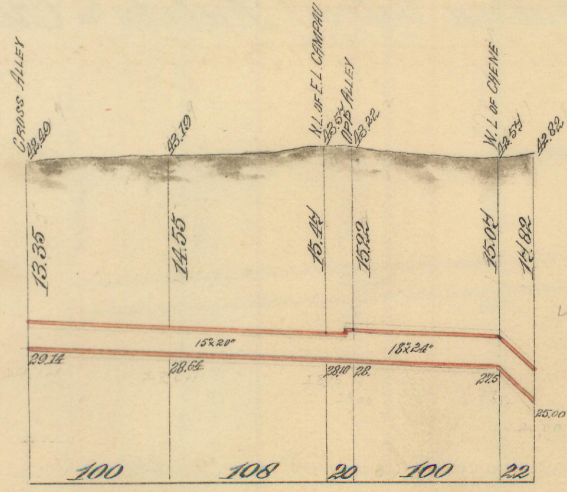
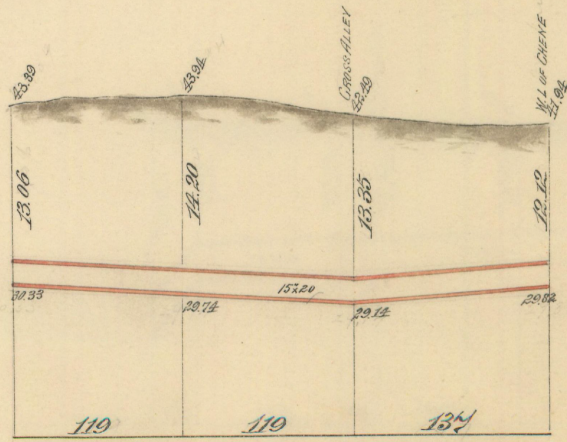
1875

No. 63

Fulwatt and Marston Contractors
 No. of Assmt Roll 2666
 Price per Foot, 88c

LATERAL SEWER IN ALLEY
 Betⁿ Gratiot, E. L. Campau, Chene and Dubois Streets

1875



SCALE { Horizontal; One Inch = 100 Feet
 Vertical " " 10 "

SEWER { Actual Length of Sewer 112 1/2 feet
 Size " " 15' x 20" to 18' x 24"
 Grade " " 0.50 per 100 ft.

6555

LATERAL SEWER IN ALLEY

BETWEEN
DUBOIS, CHENE, AND HUNT STS.
AND **GRATIOT AVE.**

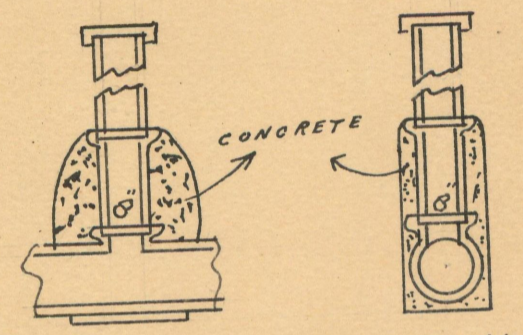
SEWER BUILT BY
CITY.

DETAILS

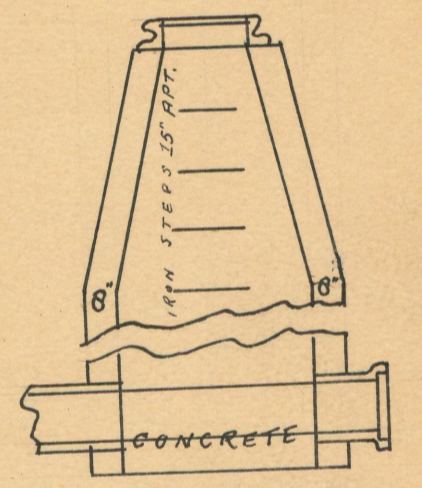
LENGTH OF SEWER 106 FEET
 " " 12" PIPE " " INC. 8-6" Y₃, 1 (12'x8') T., 2 BENDS, 1 SLANT, 2 (12'x12') Y₃.
 1 LAMP HOLE WITH IRON COVER
 1 MAN " " " STEPS
 GRADE: 100 PER 100 FEET

MONUMENT CONNECTIONS
AS PER SPECIFICATIONS.
WEST & NORTH 3" TILE.....**6**.....
EAST & SOUTH HOLLOW BRICK.....**3**.....

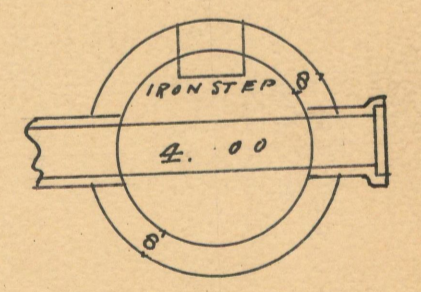
SCALES:
 HORIZONTAL 1 INCH. = 100 FEET.
 VERTICAL 1 INCH. = 10 FEET.
 PLAT 1 INCH. = 100 FEET.
 DETAILS 1 INCH. = 4 FEET.
 NOTE: Cement and Manhole Covers will be furnished by the City.



SEC'S OF LAMP HOLE



SEC OF MAN HOLE



PLAN OF MAN HOLE

