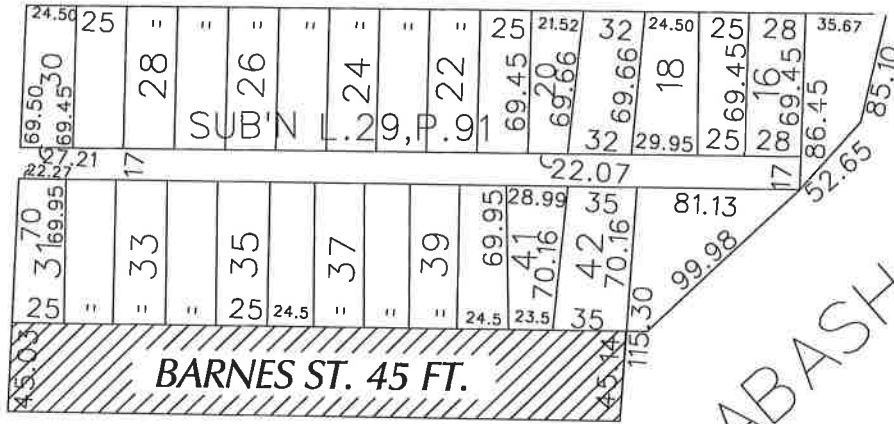


PETITION NO. 1406
 DYKEMA GOSSETT PLLC
 400 RENAISSANCE CENTER
 DETROIT, MICHIGAN 48243
 C/O JENNIFER BOUERI CHILSON
 PHONE NO. 313 568-5331



WEST END AVE.
 25 FT. WD.

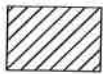
MEDINA ST. 37 FT. WD.



WABASH R.R.

ROUGE RIVER

P.C. 718
 L. 68, P. 111



- REQUESTED CONVERSION TO EASEMENT

(FOR OFFICE USE ONLY)

CARTO 1 A & F

B					
A					
DESCRIPTION	DRWN	CHKD	APPD	DATE	
REVISIONS					
DRAWN BY	WLW	CHECKED			
DATE	02-08-17	APPROVED			

REQUEST TO CONVERT TO EASEMENT
 BARNES ST., 45 FT. WD.
 IN THE BLOCK BOUND BY
 WEST END AVE., MEDINA ST., WABASH R.R.
 AND ROUGE RIVER

CITY OF DETROIT CITY ENGINEERING DEPARTMENT SURVEY BUREAU	
JOB NO.	01-01
DRWG. NO.	X 1406



WESTEND : Martins ^{#1406}