

Janice M. Winfrey
City Clerk

City of Detroit
OFFICE OF THE CITY CLERK

Victor A. Hudson
Deputy City Clerk

DEPARTMENTAL REFERENCE COMMUNICATION

Tuesday, February 21, 2017

To: *The Department or Commission Listed Below*
From: *Janice M. Winfrey, Detroit City Clerk*

AMENDMENT

Herewith, the following referral is a copy of Petition 1402

DPW - CITY ENGINEERING DIVISION PLANNING AND DEVELOPMENT DEPARTMENT

1402 *Jones Lang LaSalle, request to obtain an encroachment permit to assist in managing the placement of a temporary marketspace constructed of storage containers within Dequindre Cut, south of Wilkins Street and north of Division Street.*

NOTE: Attached please find additional documentation for the above mentioned petition.

PETITIONER IS AMENDING PETITION DUE TO:
Inclusion of site plan.. See attached.

Please provide the City Council with a report relative to this petition within four (4) weeks. Thanking you in advance.

City of Detroit

OFFICE OF THE CITY CLERK

Janice M. Winfrey
City Clerk

Vivian A. Hudson
Deputy City Clerk

DEPARTMENTAL REFERENCE COMMUNICATION

Monday, January 23, 2017

To: The Department or Commission Listed Below

From: Janice M. Winfrey, Detroit City Clerk

The following petition is herewith referred to you for report and recommendation to the City Council.

In accordance with that body's directive, kindly return the same with your report in duplicate within four (4) weeks.

DPW - CITY ENGINEERING DIVISION PLANNING AND DEVELOPMENT DEPARTMENT

- 1402** *Jones Lang LaSalle, request to obtain an encroachment permit to assist in managing the placement of a temporary marketspace constructed of storage containers within Dequindre Cut, south of Wilkins Street and north of Division Street.*



Jones Lang LaSalle
226 East Hudson Suite 200
Royal Oak, Michigan 48067
Tel: +1 248 581 3300 Fax: +1 248 581 3242

January 19, 2017

City of Detroit
City Clerk's Office
2 Woodward Avenue, Suite 200
Detroit, MI 48226

Attn: Mr. Andrew Gilbert

Subject: Request for Encroachment Permit

Mr. Gilbert,

The Detroit Riverfront Conservancy (DRFC) has hired JLL to assist in managing the placement of a temporary market space constructed of storage containers for retail and entertainment purposes. The placement of this project is being proposed within the City of Detroit ROW, so we are therefore requesting permission to locate the project in this area.

Our plan includes installation within Dequindre Cut, south of Wilkins Street and north of Division Street. The project will rest in the greenspace east of the asphalt walkway. The project will consist of various storage containers customized to accommodate entertainment space and retail. It is our hope to activate this space to provide visitors with a place to enjoy food, beverages and performances while enjoying the scenery of Dequindre Cut.

I have attached a preliminary design concept package that we are working to finalize and a picture of the location being proposed for your consideration. Our proposed schedule is to begin placement of the units by May 2017 for operation in June 2017.

If there are additional questions or further discussions required, please feel free to contact me at 313-570-1476.

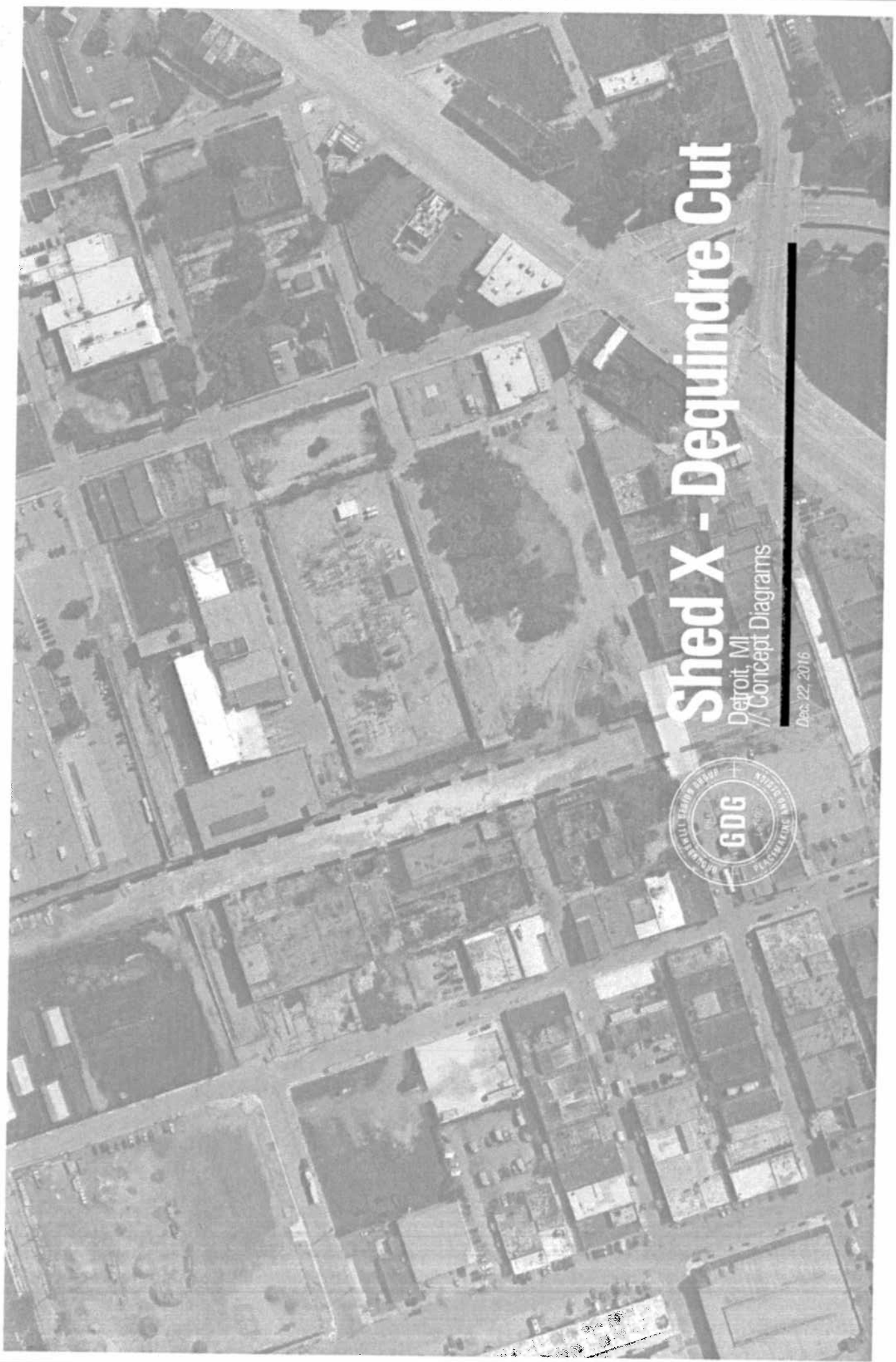
Respectively,

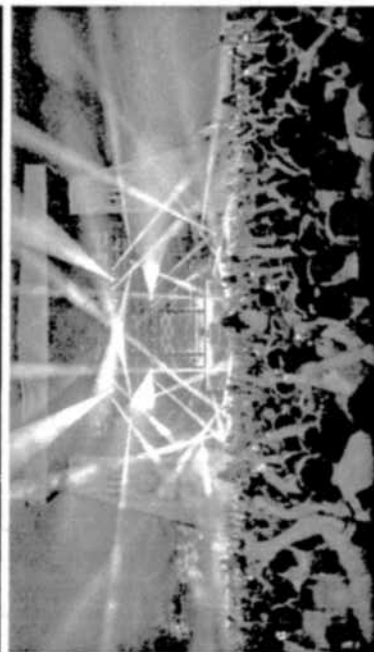
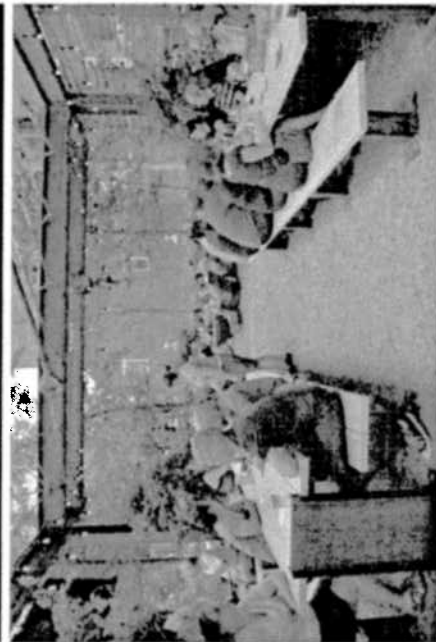
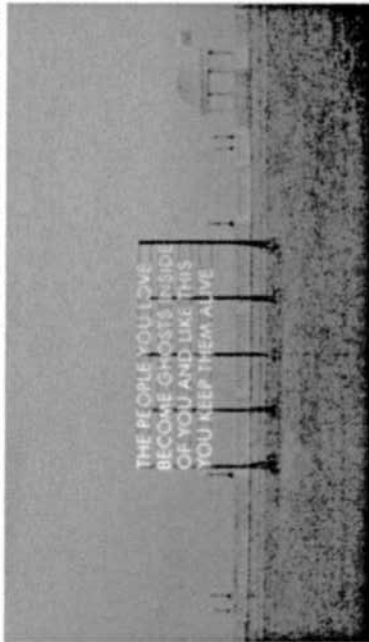
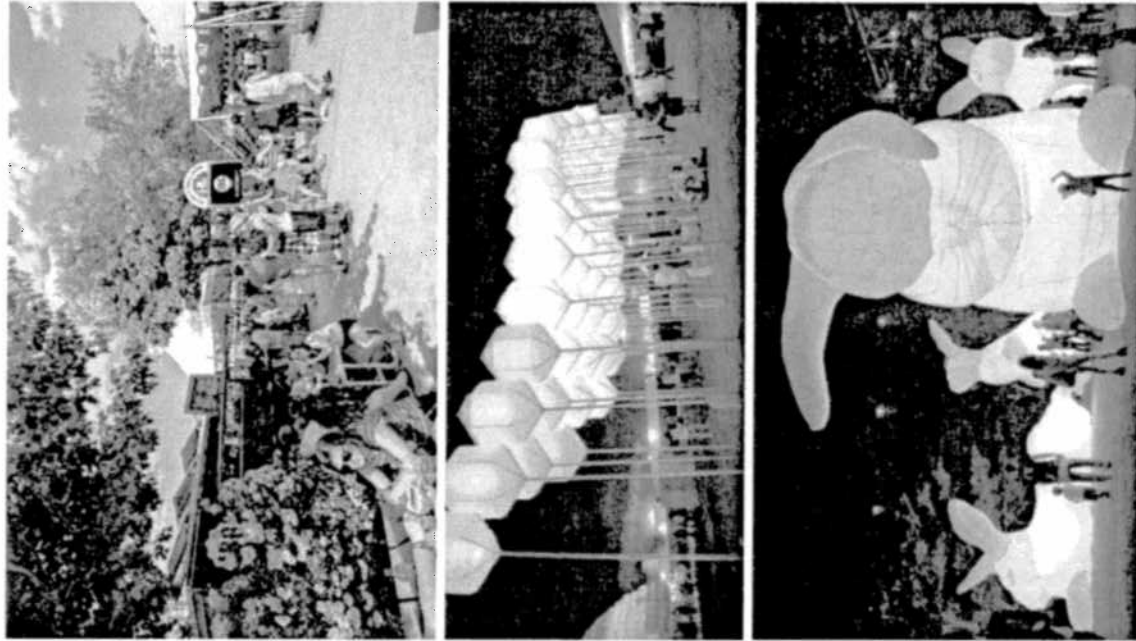
Rhonda Collins
Rhonda Collins
Senior Project Manager
Jones Lang LaSalle

Shed X - Dequindre Cut

Detroit, MI
// Concept Diagrams

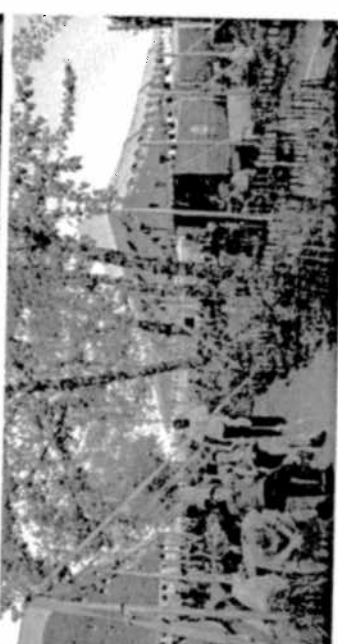
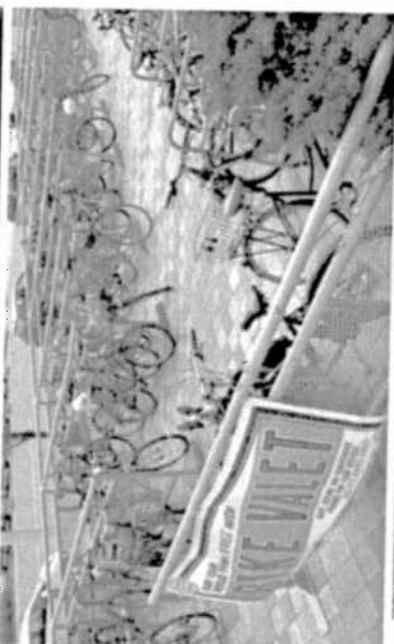
Dec. 22, 2016



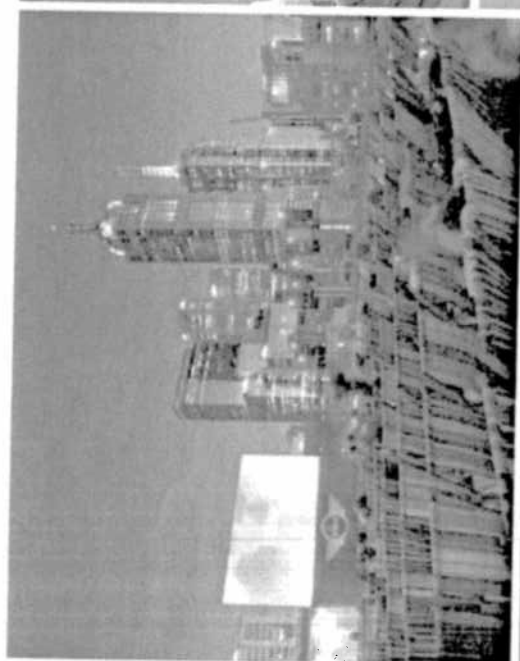
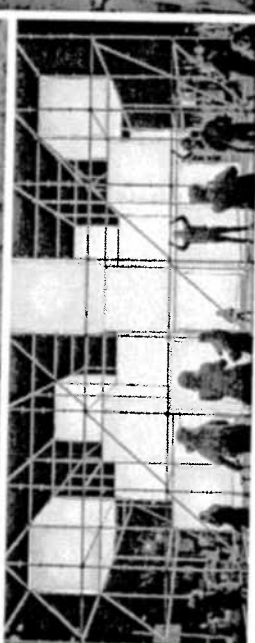
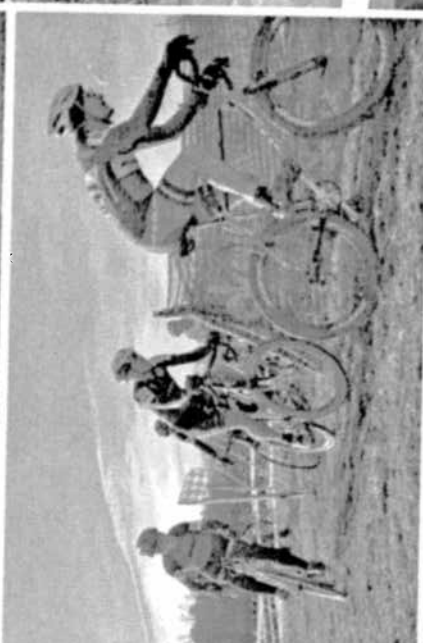
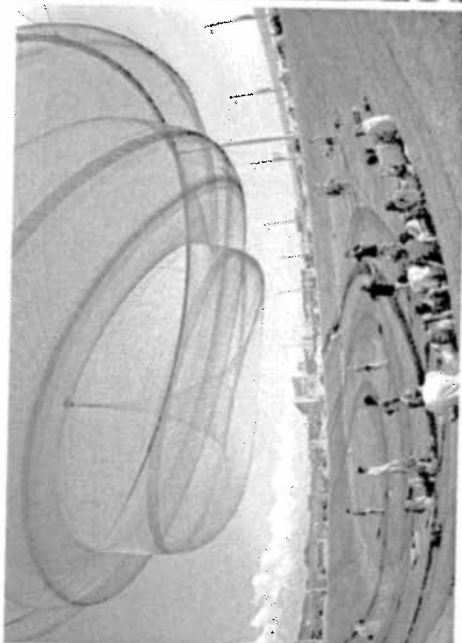


// Precedents, Inspiration & Programming

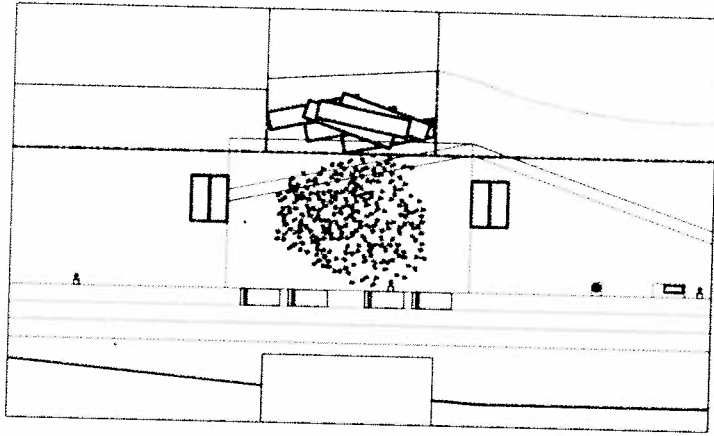
GROUNDSWELL



GROUNDWELL



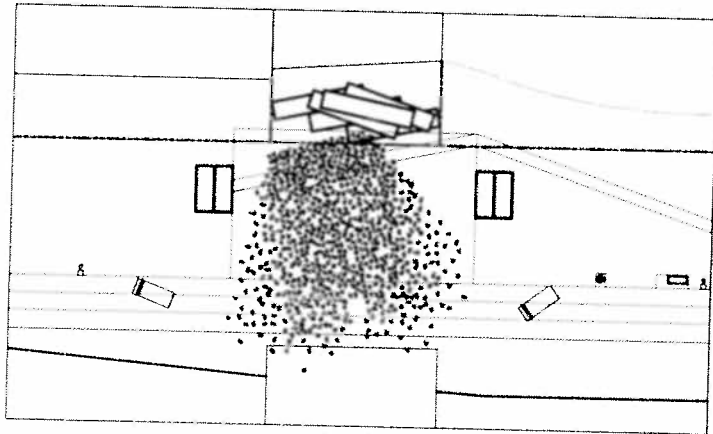
// Precedents, Inspiration & Programming



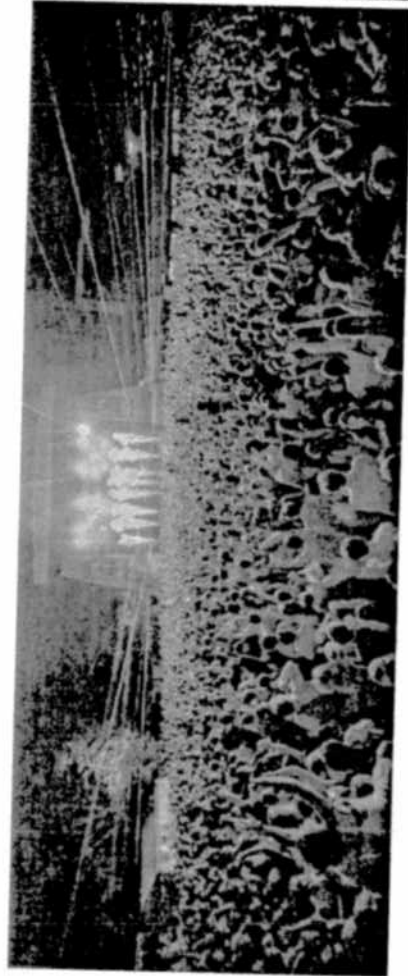
250
People



500
People

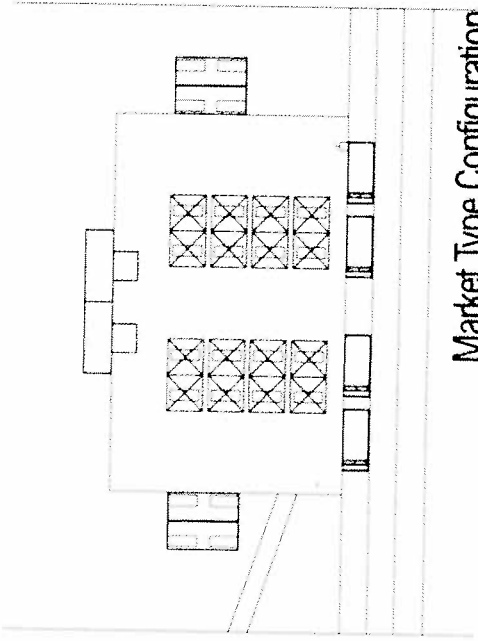
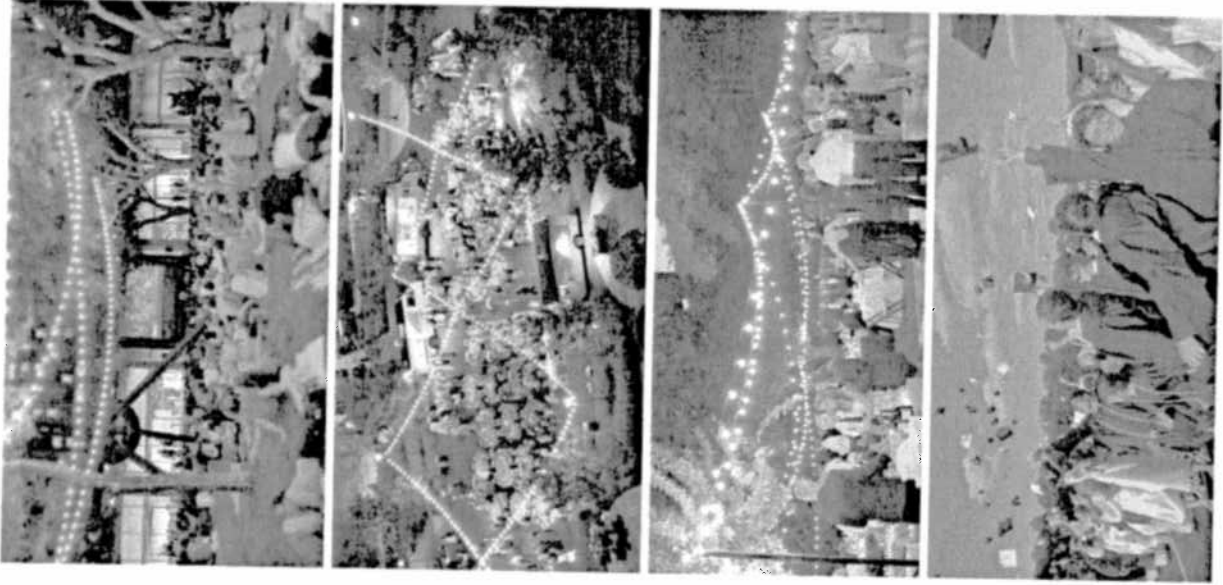


750
People

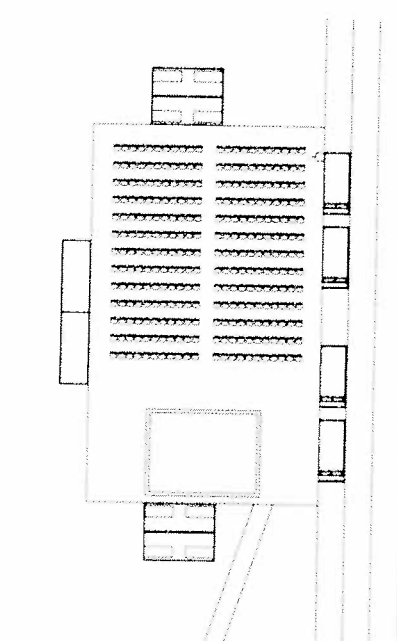


GRUNDSWELL

// The Heart - Crowd Activation Diagrams

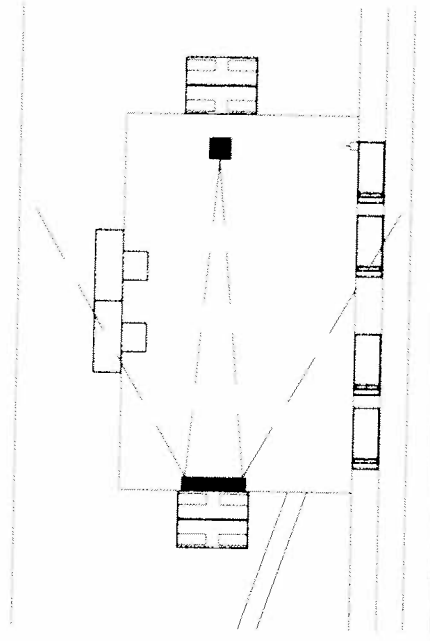


Market Type Configuration

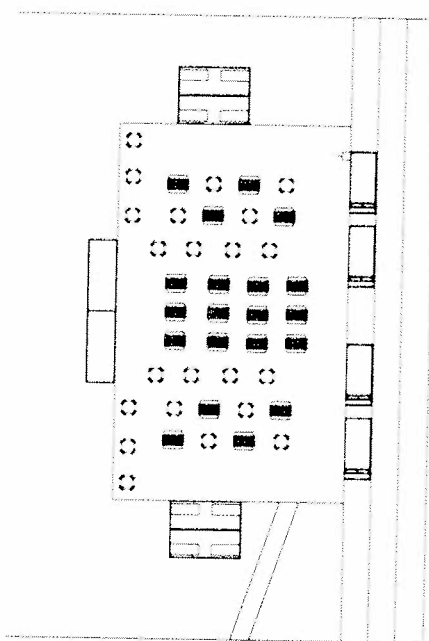


Stage & Seating Configuration

// Secondary Spaces Activation Diagrams

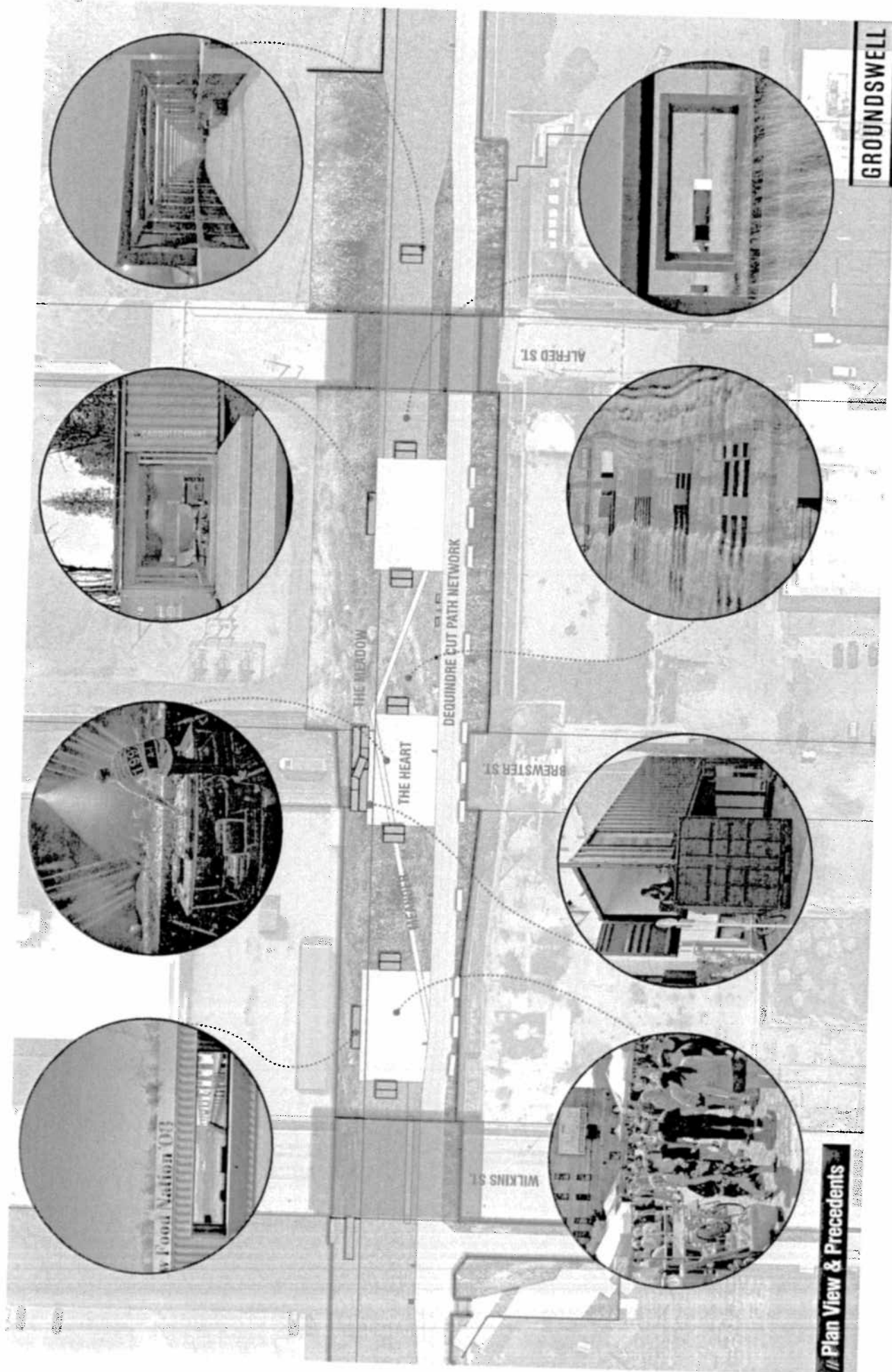


Movie Night Configuration



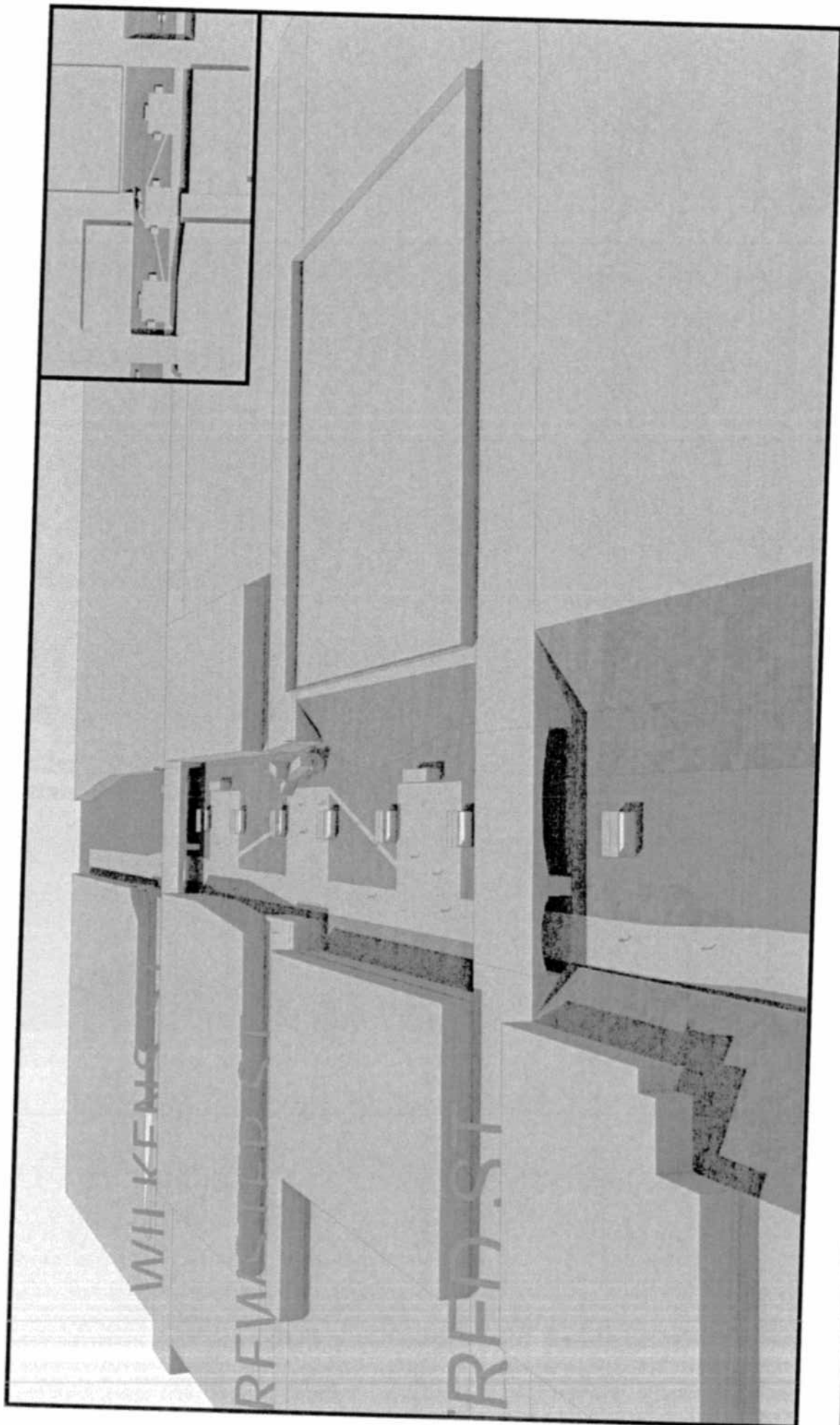
Food & Bev Festival Configuration

GROUNDSWELL



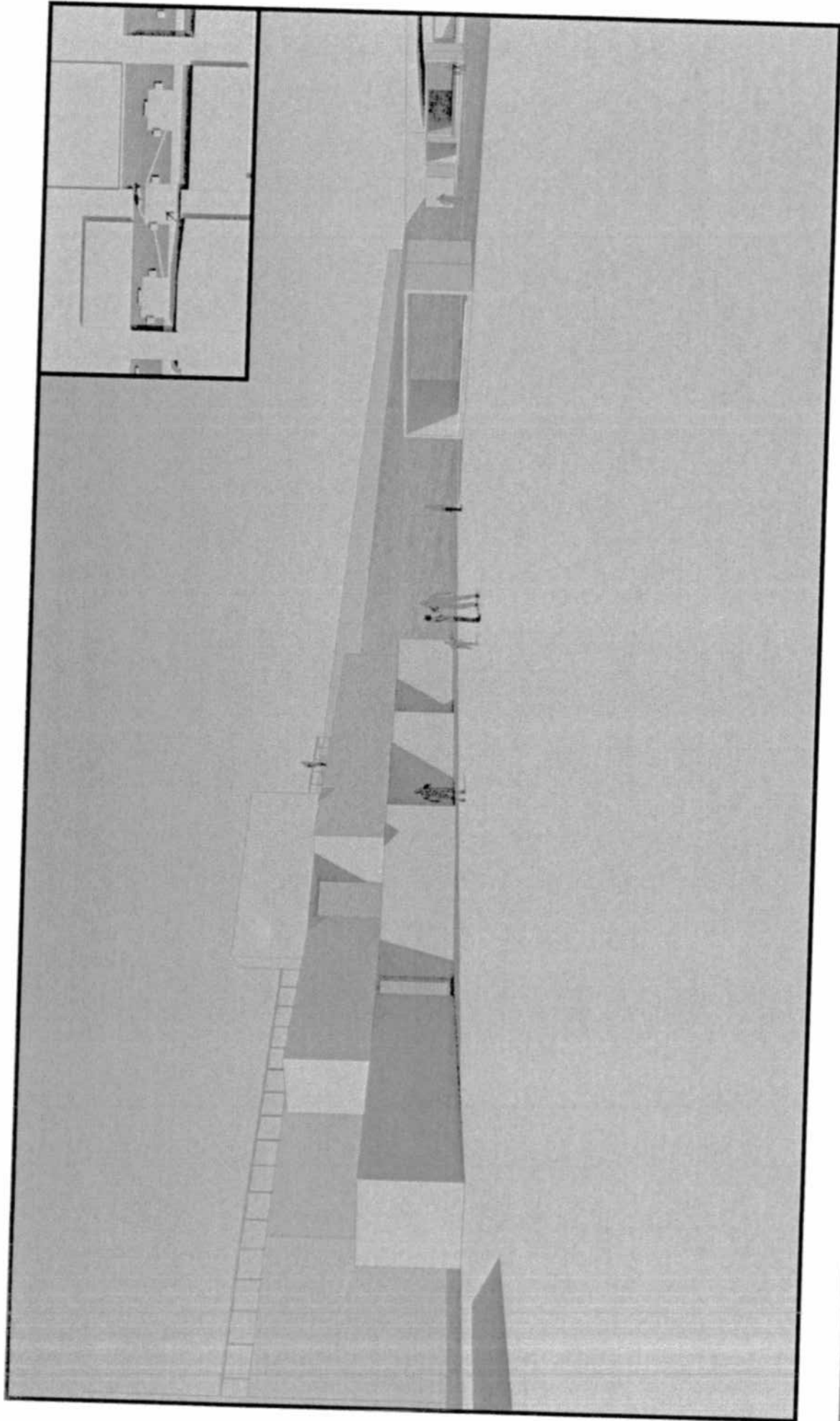
GROUNDSWELL

// Plan View & Precedents



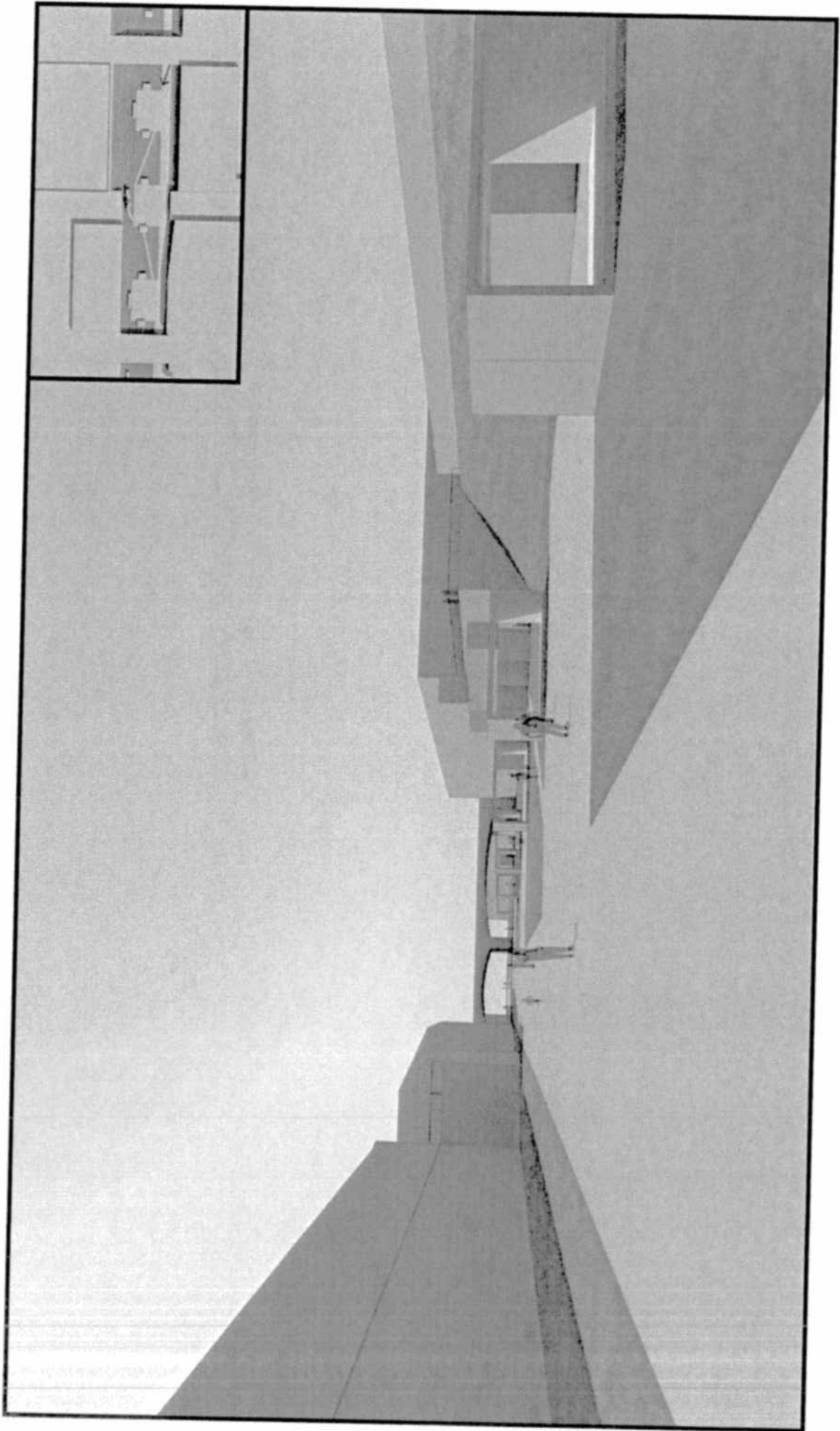
Version 1 // Clay Model Views

GRUNDSWELL



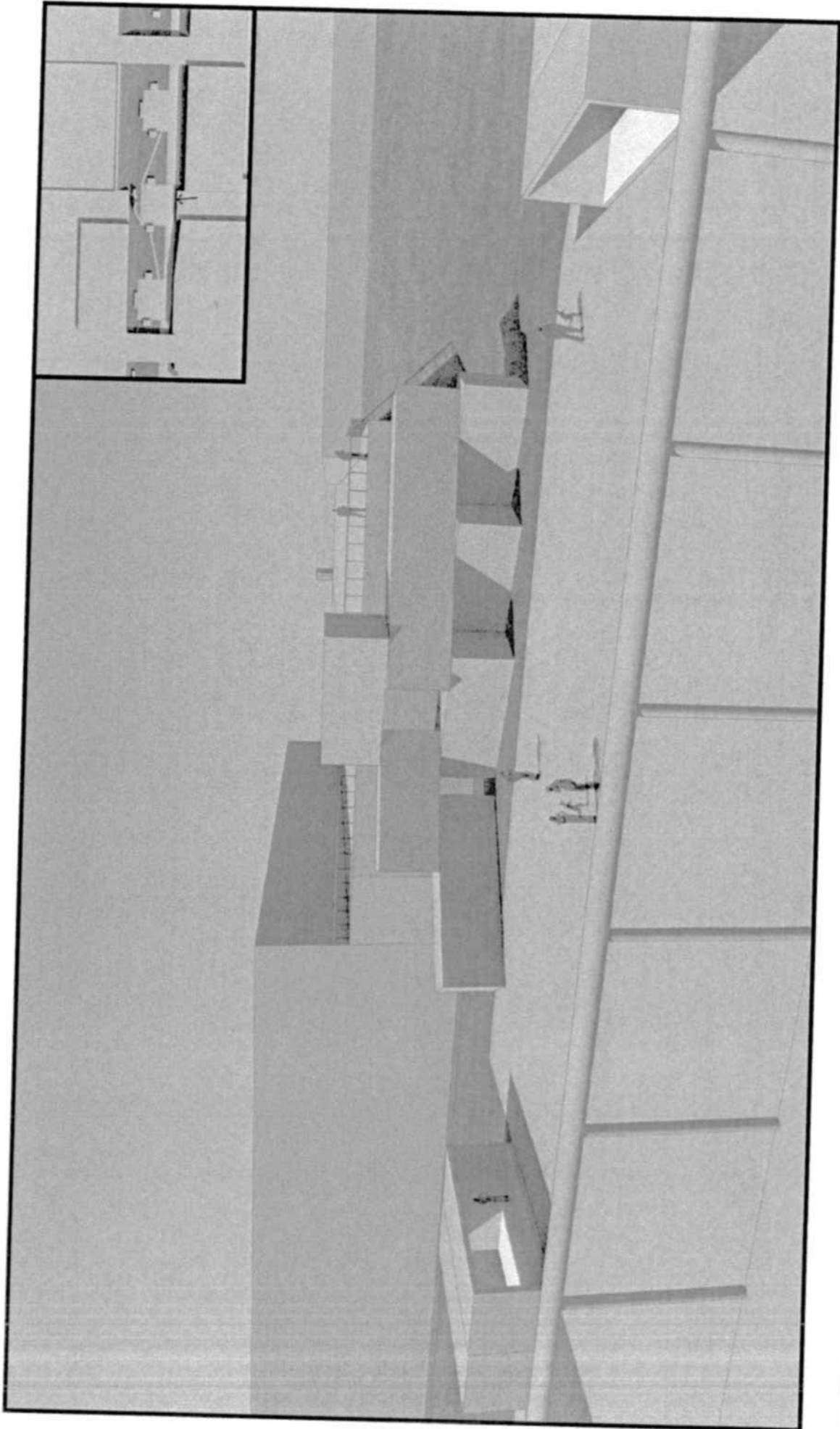
GRUNDSWELL

Version 1 // Clay Model Views



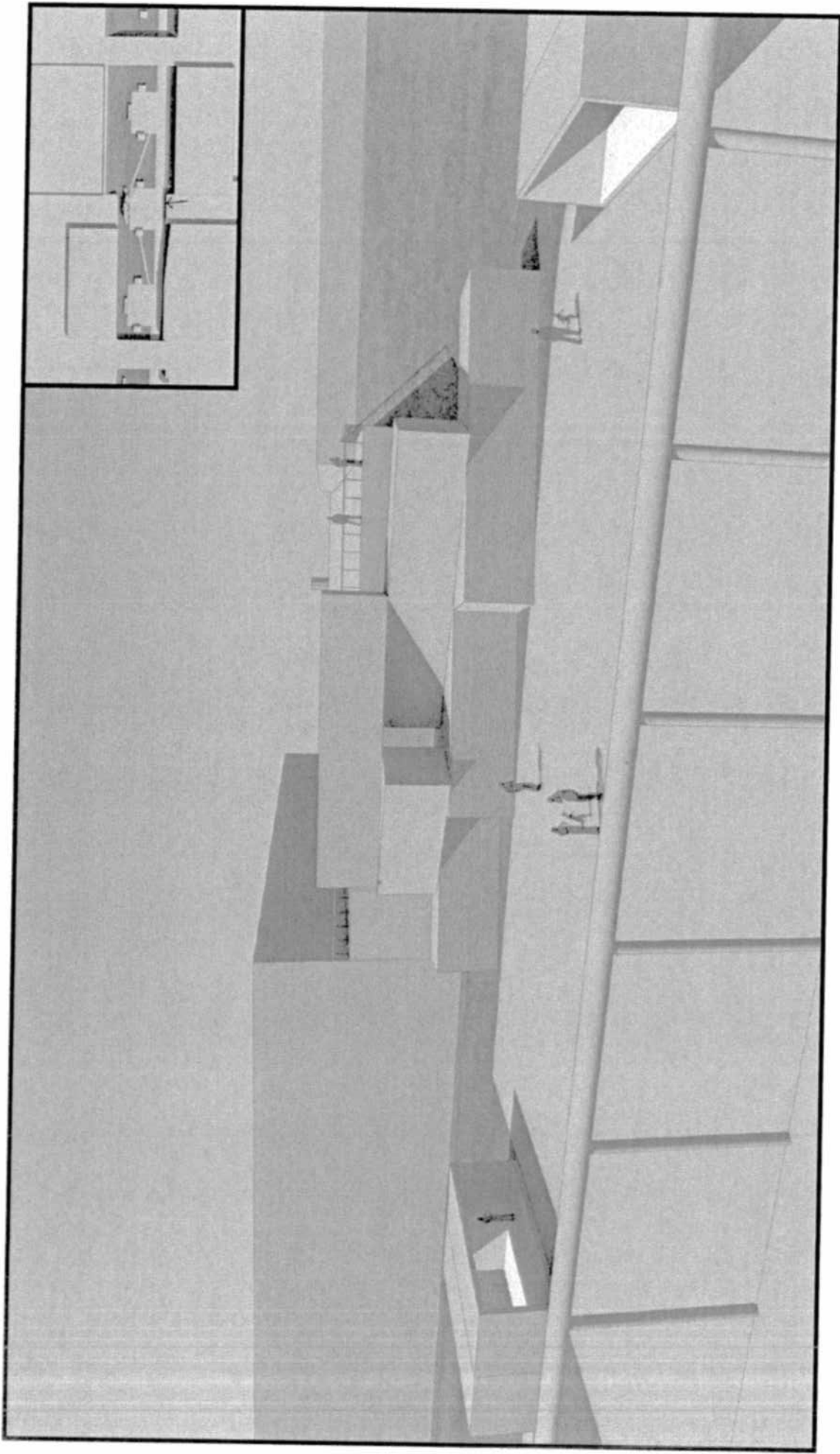
GRUNDSWELL

Version 1 // Clay Model Views



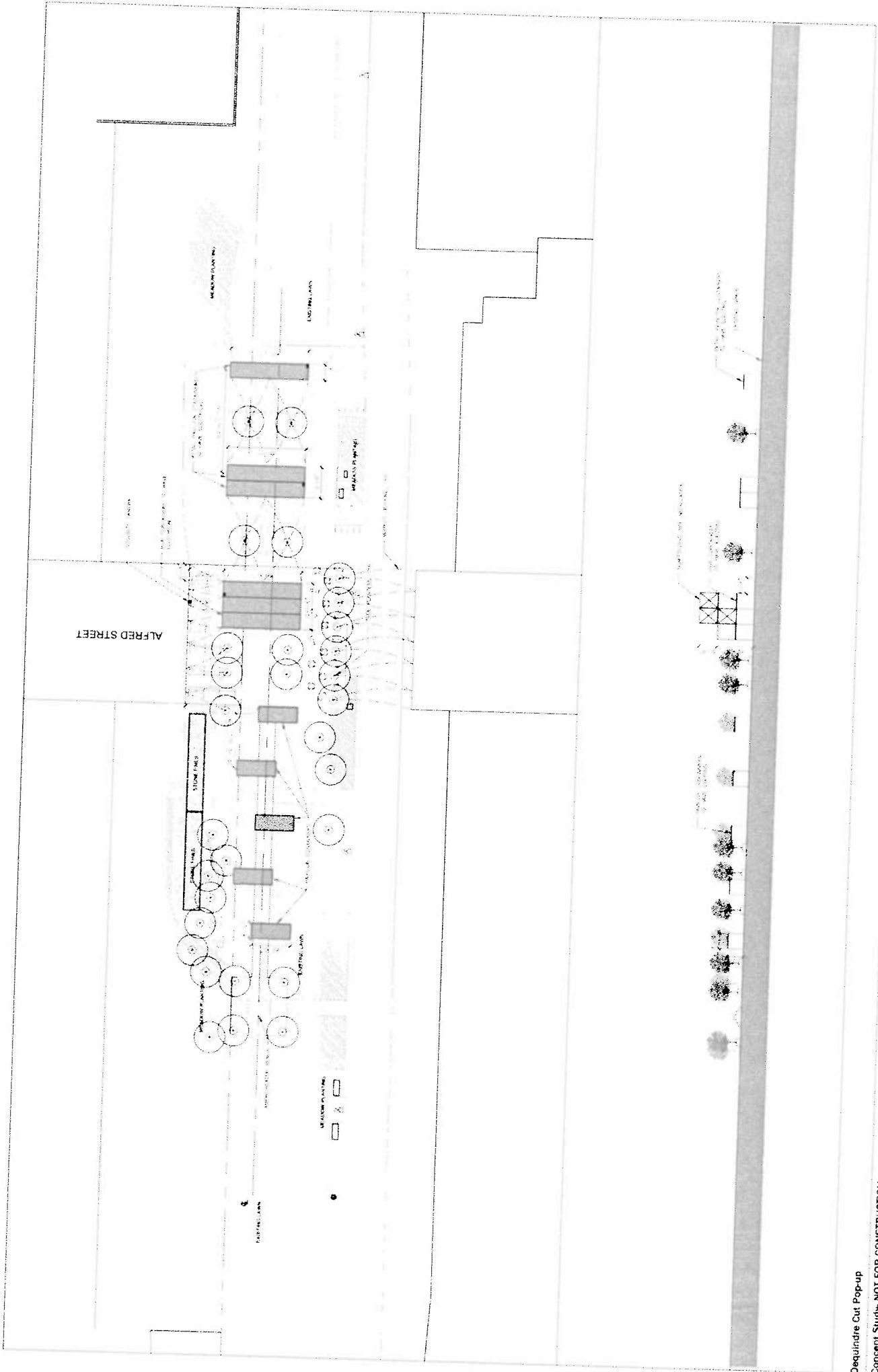
GRUNDSWELL

Version 1 // Clay Model Views



GROUNDSWELL

Version 2 // Clay Model Views



Dequindre Cut Pop-up
 Concept Study - NOT FOR CONSTRUCTION

