

City of Detroit
OFFICE OF THE CITY CLERK

Janice M. Winfrey
City Clerk

Vivian A. Hudson
Deputy City Clerk

DEPARTMENTAL REFERENCE COMMUNICATION

Monday, January 09, 2017

To: The Department or Commission Listed Below

From: Janice M. Winfrey, Detroit City Clerk

The following petition is herewith referred to you for report and recommendation to the City Council.

In accordance with that body's directive, kindly return the same with your report in duplicate within four (4) weeks.

DPW - CITY ENGINEERING DIVISION

1388 *Intersection Consulting Group, LLC, request to vacate portions of Sproat Street, Sibley Street, Clifford Street, and Henry Street in the area bounded by Cass Avenue, Woodward Avenue, Temple Avenue and Fisher Freeway*

03 January 2017

Honorable Detroit City Council
C/o Detroit City Clerk
2 Woodward Avenue
200 Coleman A. Young Municipal Center
Detroit, Michigan 48226

RE: Request to vacate portions of Sproat Street, Sibley Street, Clifford Street, and Henry Street in the area bounded by Cass Avenue, Woodward Avenue, Temple Avenue, and Fisher Freeway Service Drive.

Intersection Consulting Group, LLC, on behalf of the City of Detroit Downtown Development Authority, 500 Griswold Street, Detroit, Michigan, 48226, and adjoining property owner, Olympia Development of Michigan, LLC and its affiliates, whose address is 2211 Woodward Avenue, Detroit, Michigan, 48201, respectfully requests that the following public street right-of-ways be vacated with the City retaining a full-width, private sub-surface easements for utilities:

- Sproat Street (50 feet wide), between Cass Avenue and Park Avenue, including vacation of retained easement for vehicular and pedestrian circulation;¹
- Clifford Street (60 feet wide), beginning at Sproat Street extending south 161.00 feet;
- Clifford Street (60 feet wide), beginning 78.10 feet north of Henry Street and extending 297.90 feet north;
- Sibley Street, (50 feet wide), beginning at Cass Avenue and extending east to Clifford Street.
- Henry Street (50 feet wide), beginning 107 feet east of Clifford Street and extending to Woodward Avenue.

In addition to the requested public street vacations, we request that below grade foundation and retaining wall encroachments be authorized in an area measuring 46.0 feet located in:

- Clifford Street (60 feet wide) private subsurface utility easement,² 161.00 feet south of the Sproat Street southerly right-of-way line and 59.50 feet north of the northerly right-of-way line of vacated Sibley Street. We will be working with the Detroit Water and Sewerage Department, DTE Energy, and any other existing underground utilities to work around and support the existing infrastructure.

All vacations are in the area bounded by Cass Avenue, Woodward Avenue, Temple Avenue, and Fisher Freeway Service Drive. Limits of the requested easements and encroachments can be found in the attachment, enclosed herein.

¹ Sproat Street between Woodward Avenue and Park Avenue was vacated with the reservation of a private subsurface public utility easement by City Council Resolution adopted November 25, 2014, The same resolution vacated the south 5.0 feet of Sproat Street between Woodward Avenue and Park Avenue without a reservation of a private subsurface public utility easement.

² Clifford Street between Sproat Street and Sibley Street was vacated with the reservation of a private subsurface public utility easement by City Council Resolution on November 25, 2014.

Giffels Webster and Brian Ellison of Intersection Consulting Group have been asked to facilitate the requested vacations. We will be working with the City of Detroit's Department of Public Works – City Engineering Division, utility providers, and other stakeholders to achieve vacations that are satisfactory to all interested parties.

If you should have any questions, please do not hesitate to contact Giffels Webster planner, Deirdre Clein, at (P) 313.962.4442 or dclein@giffelswebster.com, or Brian Ellison at (P) 313.397.5863 or brian@intersectioncg.com.

Respectfully,

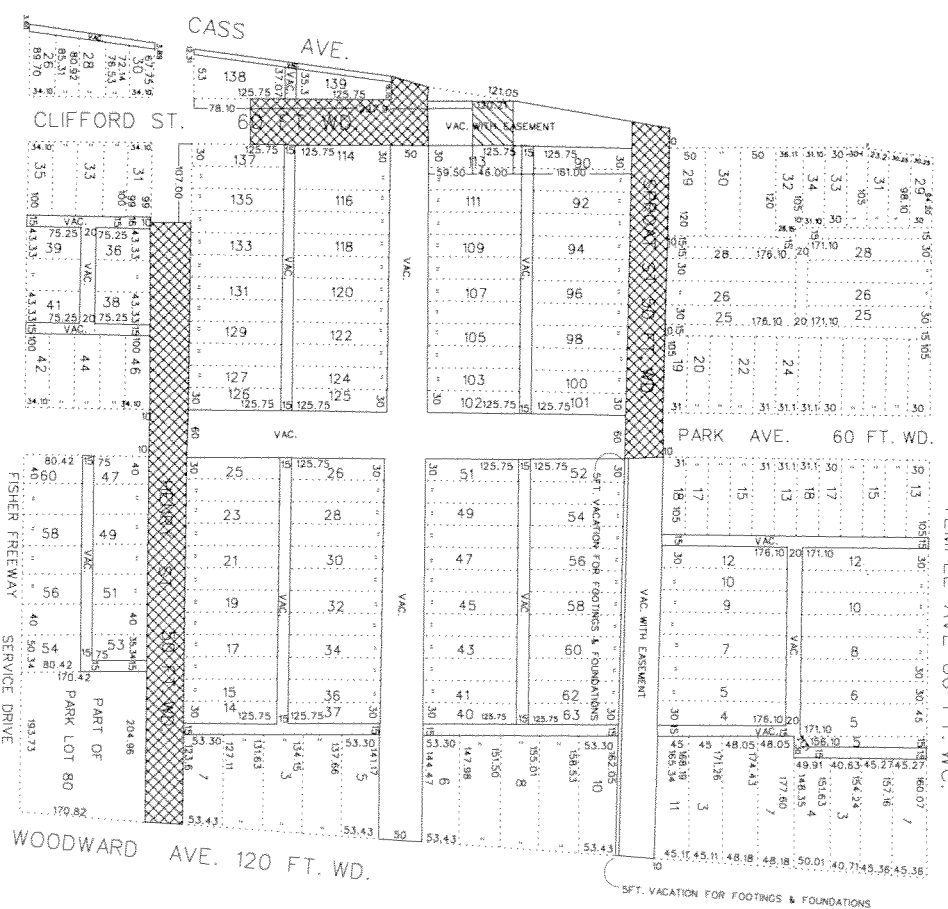
A handwritten signature in black ink, appearing to read 'Brian R Ellison', with a horizontal line extending to the right.

Brian R Ellison
Principal
The Intersection Consulting Group, LLC

PETITION NO. XXX
 GIFFELS WEBSTER
 28 W. ADAMS STE. 1200
 DETROIT, MICH. 48226
 ATT: DEIRDRE CLEIN
 P. 313.962.4442 F. 313.962.5068
 E. DCLEIN@GIFFELSWEBSTER.COM

REQUESTED CONVERSION
 TO EASEMENT (SUB-SURFACE)

REQUESTED CONVERSION TO
 EASEMENT WITH BELOW GRADE
 FOUNDATIONS, RETAINING WALLS,
 AND PAVEMENT



CARTOGRAPHIC MAP NO. 29-E
 (FOR OFFICE USE ONLY)
 NOT TO SCALE

REQUESTED CONVERSION OF SPROAT STREET AND A PORTION OF SIBLEY STREET, CLIFFORD STREET, AND HENRY STREET IN THE AREA OF CASS AVENUE, WOODWARD AVENUE, FISHER FREEWAY SERVICE DRIVE, AND TEMPLE AVENUE.

B	DATE	APPROVER
	11/15/2016	

A	DESCRIPTION	DATE
	REVISION	
	CHECKED	
	DESIGNED	
	DATE	

CITY OF DETROIT
 CITY ENGINEERING DEPARTMENT
 SURVEY BUREAU
 JOB NO. 01-01
 DRAWING NO. X-XXX.DGN



CARTOGRAPHIC MAP NO. 29-E

2017-01-09

1388

1388 *Petition of Intersection Consulting Group, LLC, request to vacate portions of Sproat Street, Sibley Street, Clifford Street, and Henry Street in the area bounded by Cass Avenue, Woodward Avenue, Temple Avenue and Fisher Freeway*

REFERRED TO THE FOLLOWING DEPARTMENT(S)

DPW - CITY ENGINEERING DIVISION