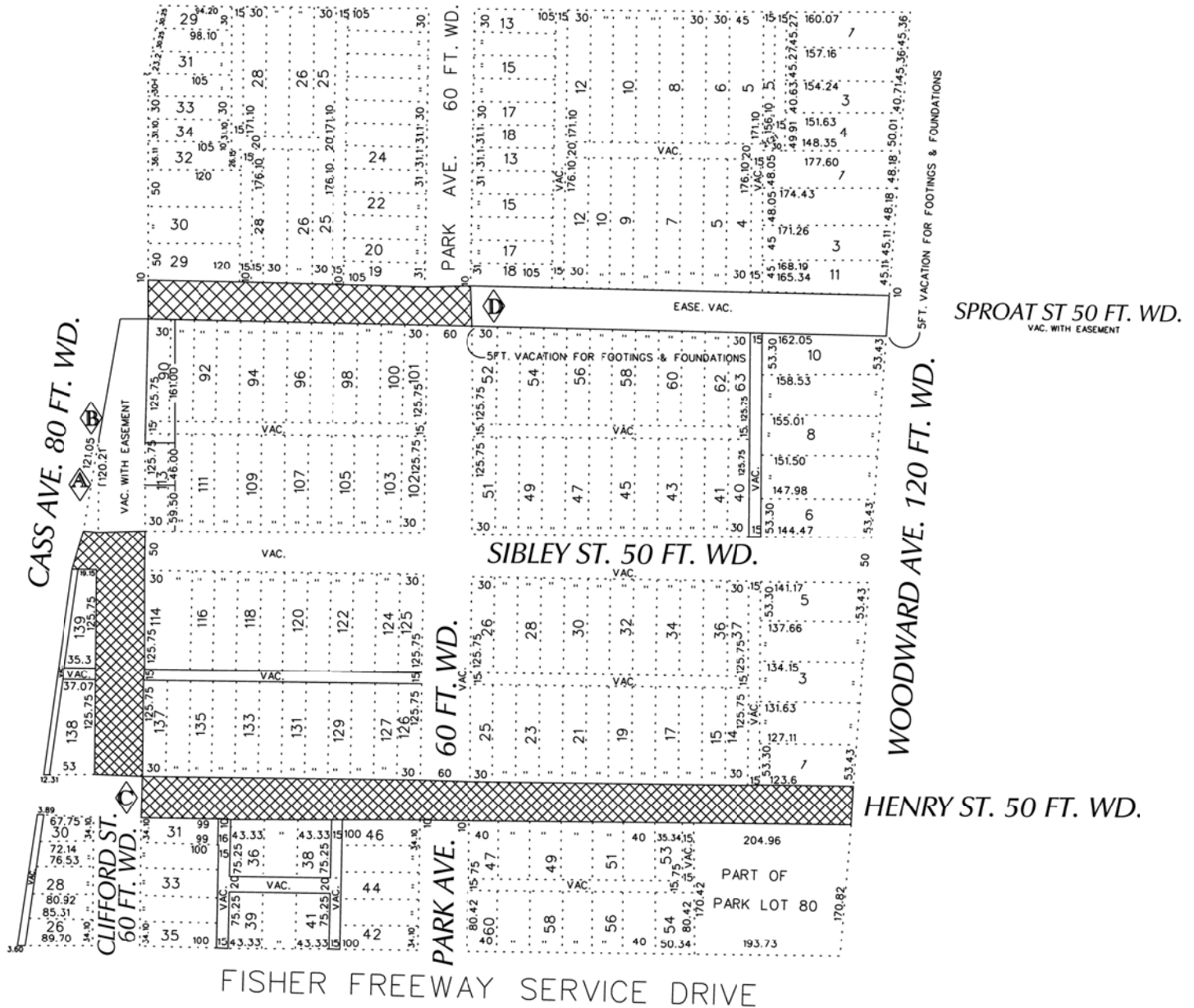


PETITION NO. 1388
 INTERSECTION CONSULTING GROUP
 500 GRISWOLD AVE.
 DETROIT, MICHIGAN 48239
 C/O BRIAN ELLISON
 PHONE NO. 313 397-5863



TEMPLE AVE. 60 FT. WD.



 - CONVERSION TO EASEMENT

D	EXTEND CONVERSION TO EASEMENT	SA	JD	JD	11/22/19
C	EXTEND CONVERSION TO EASEMENT	WLW	KSM	KSM	12/10/18
B	REMOVE CONVERSION TO EASEMENT	WLW	KSM	KSM	12/10/18
A	CHANGE FROM CONVERSION TO EASEMENT TO REQUEST ENCROACHMENT	WLW	KSM	KSM	5/18/17
DESCRIPTION		DRWN	CHKD	APPD	DATE
REVISIONS					
DRAWN BY	ICG	CHECKED	KSM		
DATE	02-02-17	APPROVED			

(FOR OFFICE USE ONLY)

CARTO 29 E

REQUEST TO CONVERT TO EASEMENT
 SPROAT, SIBLEY, HENRY ST. 50 FT. WD.
 AND CLIFFORD ST. 60 FT. WD.
 IN THE AREA BOUND BY
 CASS, TEMPLE, WOODWARD AVE.
 AND FISHER FWY. SERVICE DRIVE

CITY OF DETROIT CITY ENGINEERING DEPARTMENT SURVEY BUREAU	
JOB NO.	01-01
DRWG. NO.	X 1388

"REVISED"