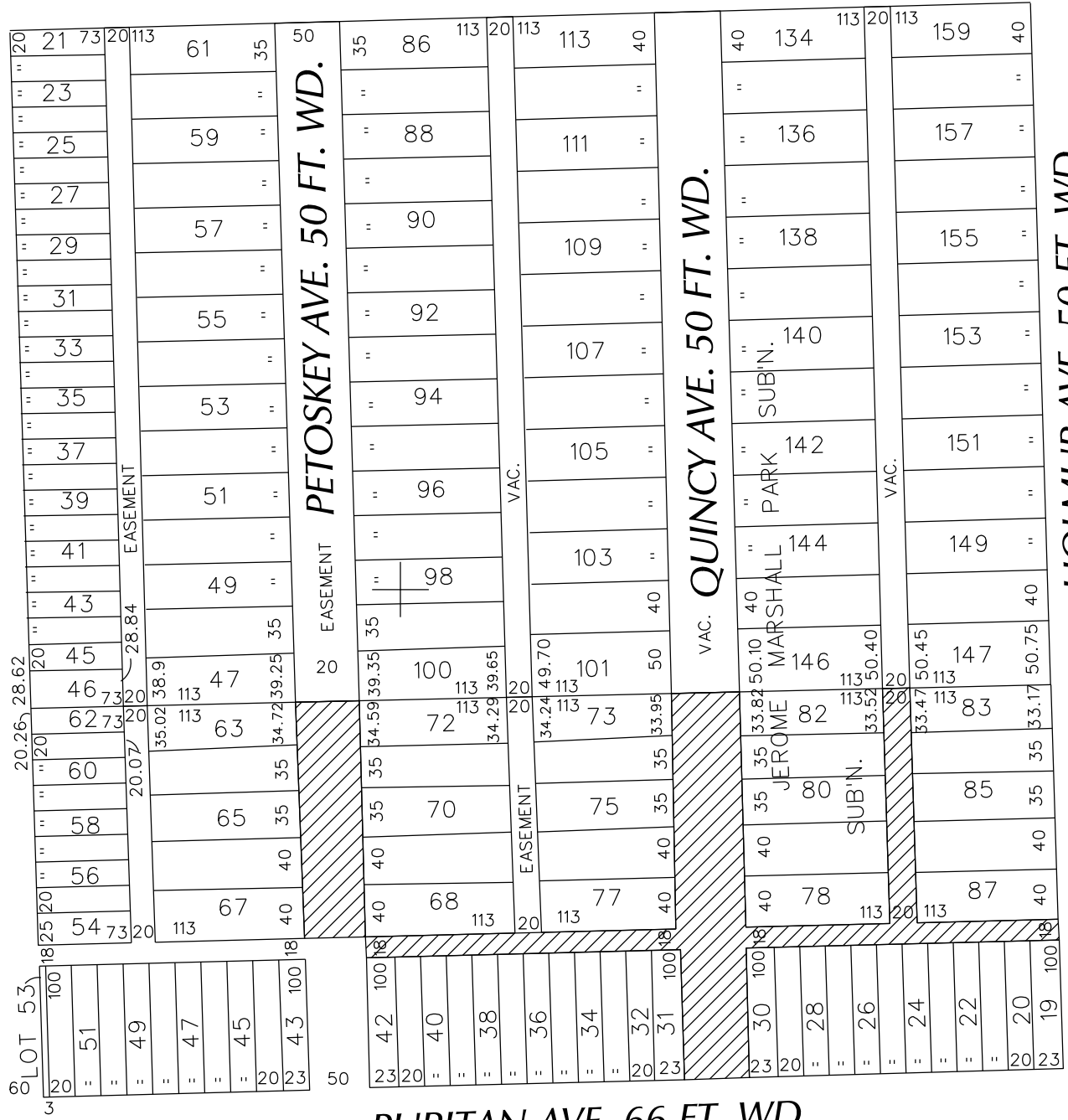


PETITION NO. 982
 GIFFELS WEBSTER
 28 W. ADAMS SUITE 1200
 DETROIT, MICHIGAN 48226
 C/O SCOTT CLEIN
 PHONE NO. 313 962-4442



FLORENCE AVE. 100 FT. WD. EASEMENT

LIVERNOIS AVE. 120 FT. WD.



PURITAN AVE. 66 FT. WD.



- REQUESTED CONVERSION TO EASEMENT

(FOR OFFICE USE ONLY)

CARTO 25 C

B					
A					
DESCRIPTION		DRWN	CHKD	APPD	DATE
REVISIONS					
DRAWN BY		CHECKED			
DATE		APPROVED			
03-09-16					

REQUEST TO CONVERT TO EASEMENT
 VARIOUS PUBLIC ALLEYS, VARIOUS WIDTHS
 AND VARIOUS PUBLIC STREETS, 50 FT. WD.
 IN THE BLOCKS BOUND BY
 FLORENCE, HOLMUR, PURITAN
 AND LIVERNOIS AVE.

CITY OF DETROIT CITY ENGINEERING DEPARTMENT SURVEY BUREAU	
JOB NO.	01-01
DRWG. NO.	X 982