

TO: City Engineering Division, DPW
2 Woodward Ave., Suite 642
Detroit, MI 48226-3462
Survey Bureau: 313-224-3970

Ref. No. 201606012
Petition No. 980

The proposed change in property (referred to above) would affect our services as follows:

- () Not Involved.
- () Involved; but asking you to hold action on this petition until further notice.
- () Involved; the nature of our services, and the estimated costs of removing and/or rerouting such services are:
- (X) Involved; have no objection to the requested encroachment into Griswold and Grand river Ave. at 28 W. Grand River Ave. (with caopies) and a portion of the north/south public alley (with bollards) between Grand River and Clifford Ave. provided that the following conditions are met:
 - (1) A minimum 9' high underclearance is maintained between the sidewalk and the bottom of the canopies.
 - (2) A clear width of 18' shall be maintained in the north/south public alley after the installation of the encroaching bollards.

Traffic Engineering Division - DPW
(Utility or City Department)

Ashok Patel
By

Sunny Jacob
As A.P

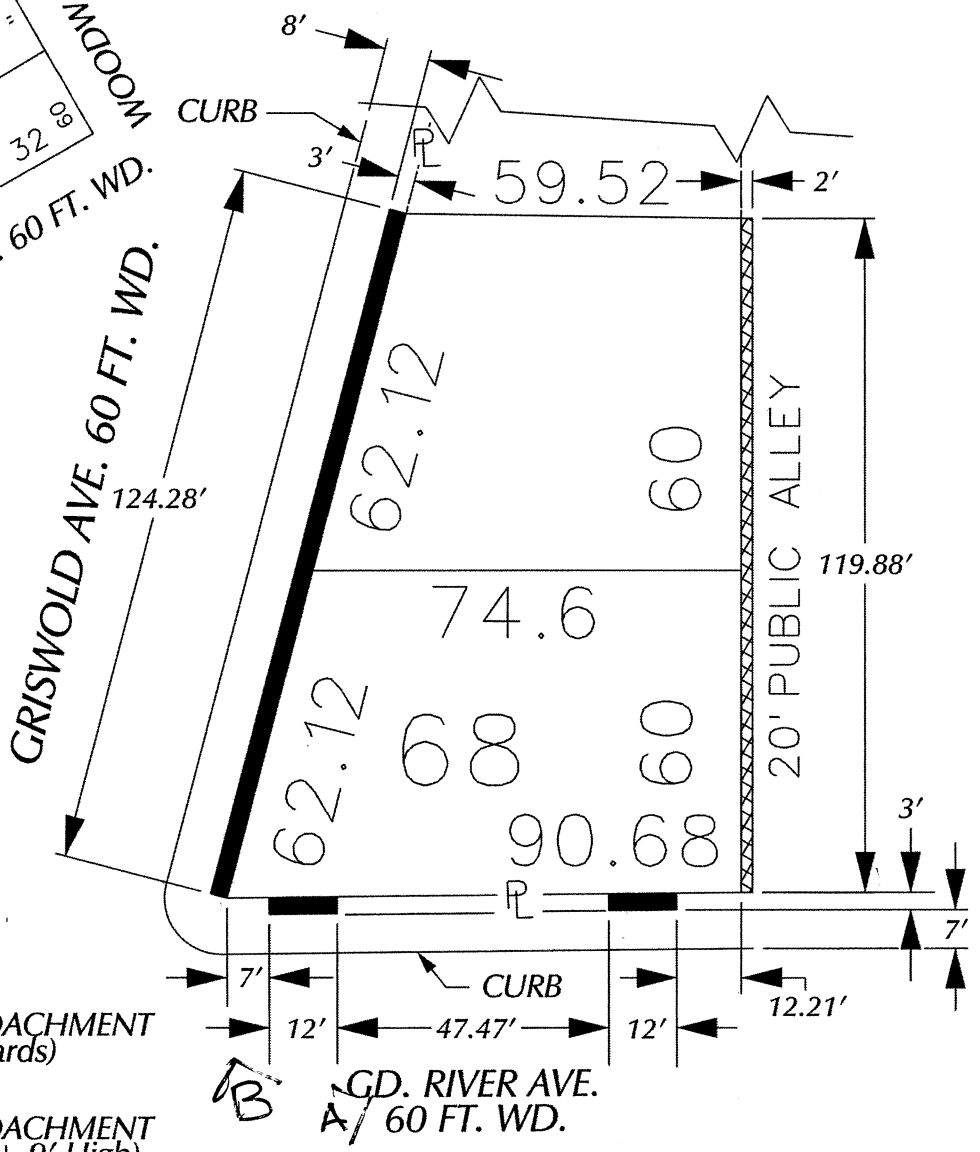
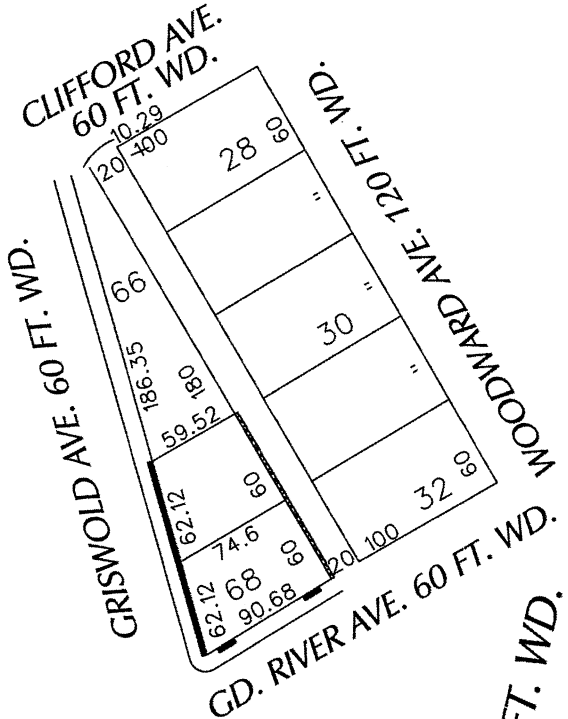
City Traffic Engineer
Title

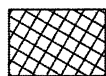

July 8, 2016
Date

313 224-1610
Area code-Telephone number

MA/ma

PETITION NO. 980
 GIFFELS WEBSTER
 28 W. ADAMS AVE., SUITE 1200
 DETROIT, MICHIGAN 48226
 C/O DEIRDRE CLEIN
 PHONE NO. 313 962-4442



-  - REQUEST ENCROACHMENT (With Bollards)
-  - REQUEST ENCROACHMENT (With Canopies ± 9' High)

(FOR OFFICE USE ONLY)

CARTO 28 B

B					
A					
DESCRIPTION	DRWN	CHKD	APPD	DATE	
REVISIONS					
DRAWN BY	WLW	CHECKED			
DATE	02-25-16	APPROVED			

REQUEST ENCROACHMENT
 INTO GRISWOLD AND GD. RIVER AVE.
 AT 28 W. GD. RIVER AVE.
 (With Canopies)
 AND A PORTION OF THE NORTH/SOUTH PUBLIC ALLEY
 (With Bollards)
 BETWEEN GD. RIVER AND CLIFFORD AVE.

CITY OF DETROIT
 CITY ENGINEERING DEPARTMENT
 SURVEY BUREAU
 JOB NO. 01-01
 DRWG. NO. X 980

