

DTE Energy - Gas Co.  
Data Integrity and Technology  
One Energy Plaza, GO-838  
City of Detroit, MI 48226

March 2, 2016

**Richard Doherty, CED DPW Head Engineer**  
City Engineering Division, DPW  
2 Woodward Ave, Suite 642  
Detroit, Michigan 48226-3462

**RE: Petition #947**

**Dated: 3/2/2016**

- Not involved. **See Remarks**
- Involved: but asking you to hold action on this petition until further notice.
- Involved but have no objection to the property change - - provided that an easement of the full width of the public right-of-way (street, alley or other public place) is reserved.
- Involved: the nature of our services, and the estimated costs of removing, rerouting or abandonment of such all gas mains and/or services

**REMARKS:**

**Involved but have no objections to the property change, provided that the request to outright Vacate a portion of the East/West Public Alley and various public streets. Various widths in the blocks bounded by American Way, Fort St, Rademacher Ave and Wabash R.R.. Reason being is that, DTE Energy Gas Co. has an existing Gas Main Line (1-1/4"-PLA/4"-CI-10# 1985) on N. Post. Otherwise, contact DTE Energy Gas Company Public Improvement Department: Michael Fedele at 313-389-7211 (Supervisor) or Laura Forrester at 313-389-7261 (Gas Planner), for the estimated cost of our services in abandoning/removing/ and/or relocating/rerouting, including the survey, design and drawing of our utilities. See enclosed strip prints for your use and information regarding our gas main locations.**

**Please abide by Public Act 174, three (3) working days before you dig, dial toll free MISS DIG at: 1 – 800 – 482 – 7171.**

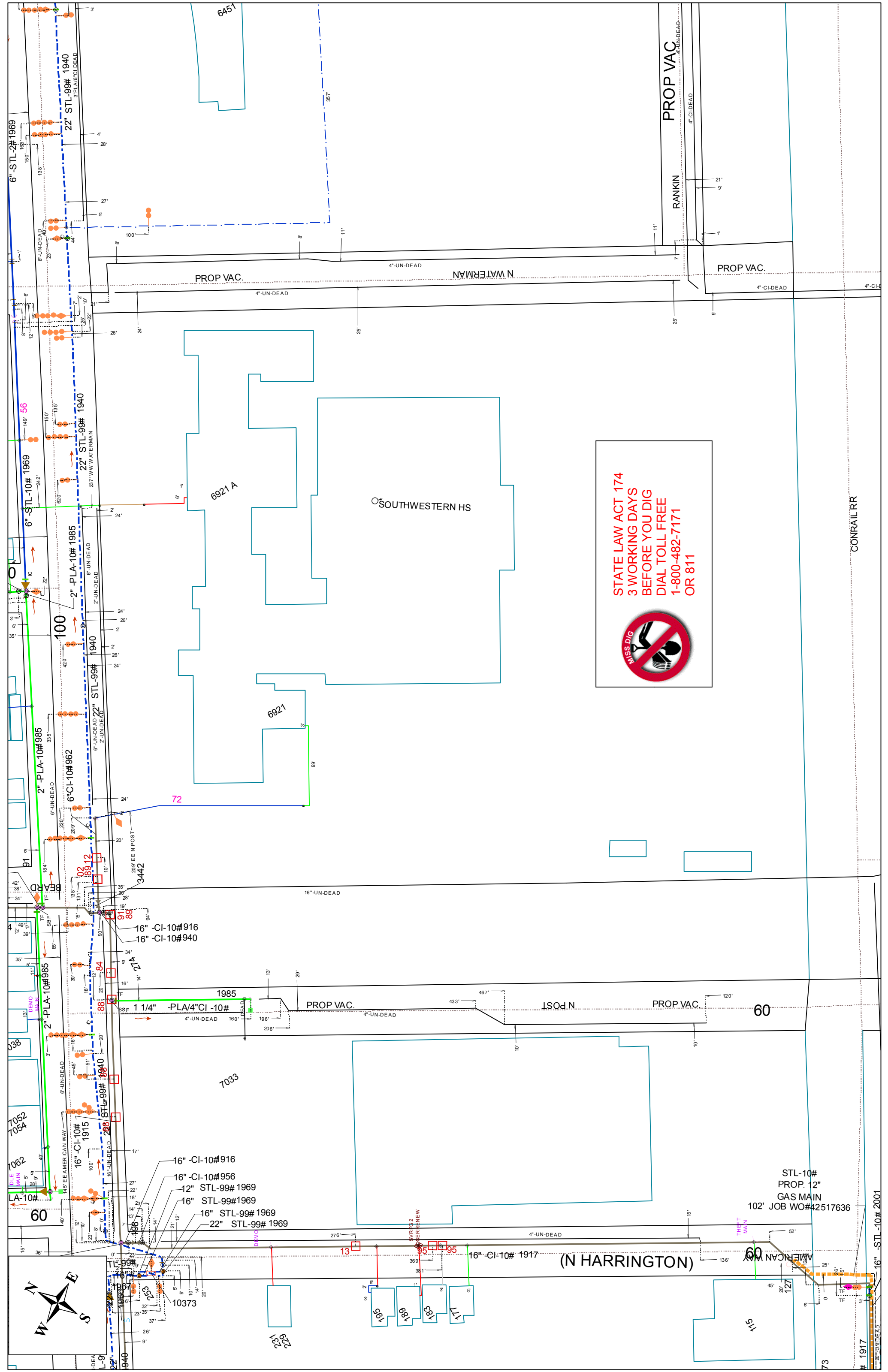
**DTE Energy Gas Leak Emergency Phone Number: 1- 800 – 947 – 5000.**

Sincerely,

***RS* Russell E Thornton**

Drafter  
Data Integrity and Technology

RET/  
Enclosure



STATE LAW ACT 174  
 3 WORKING DAYS  
 BEFORE YOU DIG  
 DIAL TOLL FREE  
 1-800-482-7171  
 OR 811

CONRAIL RR

STL-10#  
 PROP. 12"  
 GAS MAIN  
 102' JOB WO#42517636

(N HARRINGTON)



# Gas GIS Legend

## Service Symbols

- EndCap
- LoopedService
- Section
- EFV
- Relief Valve
- AbandonedService
- Aban. Service pipe

NOTE: Service line style is the same as the main it is tied into

## Customer Events

- Service Event
- CUTCAP (Cctype, location)

## AbandonedGasPipeSymbol

- Abandoned Gas Device
- End Cap
- Section Symbol

## Gas Pipe Protection

- Casing
- Shield
- Sleeve

## Land

- Bridge
- DrainCreek
- Easement
- LotLine
- RailRoad
- RightOfWay
- Tunnel
- Water
- Street Centerline
- Building
- Landmark
- BrownField

Known Sites of Environmental Contamination DEQ Dec2008

## CPANode

- Single
- Multiple

## CP Rectifier

- Rectifier

## Test Point

- DOT
- Regular TW

## Tracer Wire

- Tracer Wire

## Gas Valve

- Main, Closed
- Main, Open
- Service, Closed
- Service, Open

## Regulator Station

- District
- Secondary
- Service

## Controllable Fitting

- PCF Pressure Control Fitting
- SSF Short Stop
- Stopple Fitting
- Distribution Tiein
- Subtransmission Tiein
- Transmission Tiein

## NonControllableFitting

- Branch
- Cap
- Coupling
- Ell
- Insulated
- Reducer
- Section
- Tee
- Transition
- <all other values>

## Material Type

- CU - Copper
- CI - Cast Iron
- PLA - Plastic
- STL - Bare Steel
- STL - Coated Steel
- PLA - Plastic, Joint Trench
- OTR - Other
- UN - Unknown
- WI - Wrought Iron
- <all other values>
- Inactive - all material types

## Main Lines Styles

- In Design Main (Proposed)
- Distribution Main
- Distribution - Joint Trench
- Subtransmission Main
- Transmission
- Exposed Pipe (Coated Steel)
- Pipe Lining (CI or WI)
- AbandonedGasPipe

## Other Symbols

- Drip
- Flow Arrow
- Foreign Utility Pipe
- Public Improvement
- Pressure Monitoring Device
- Leak Report - Leak Repair
- Automated Repairs
- LowPoint
- Summit

## Scaled Areas

- 10
- 30
- 50 SCALE