

Janice M. Winfrey
City Clerk

City of Detroit
OFFICE OF THE CITY CLERK

Vivian A. Hudson
Deputy City Clerk

DEPARTMENTAL REFERENCE COMMUNICATION

Tuesday, January 12, 2016

To: The Department or Commission Listed Below

From: Janice M. Winfrey, Detroit City Clerk

The following petition is herewith referred to you for report and recommendation to the

934 *Jones Lang LaSalle, request for an encroachment permit for the construction of a performance space downtown Detroit within the Dequindre Cut to honor past member of the DRFC Board.*

8/10/16 - DID NOT REVIEW MEASURED DRAWINGS UNTIL 8/9/16

934



Jones Lang LaSalle
225 East Hudson Suite 200
Royal Oak, Michigan 48067
Tel: +1 248 581 3300 Fax: +1 248 581 3242

January 11, 2015

City of Detroit
City Clerk's Office
2 Woodward Avenue, Suite 200
Detroit, MI 48226

Attn: Mr. Andrew Gilbert

Subject: Request for Encroachment Permit

Mr. Gilbert,

The Detroit Riverfront Conservancy (DRFC) has hired JLL to assist in managing the construction of a performance space downtown Detroit within Dequindre Cut to honor a past member of the DRFC Board. The placement of this project is being proposed within the City of Detroit ROW, so we are therefore requesting permission to locate the project in this area and to access the existing concrete abutments.

will create a resting spot for visitors to enjoy performances and provide a break for bicyclists and joggers.

Events proposed for this area would include poetry reading, small concerts, theatre, dance exhibitions and other creative events programmed by the DRFC.

I have attached colored renderings of the design for your review. Our schedule is to bid and award late winter and begin construction in the spring of 2016.

If there are additional questions or further discussions required, please feel free to contact me at

313-570-1476.

Rhonda Collins

Respectively,

Rhonda Collins

Senior Project Manager

CITY CLERK 2016 JAN 12 AM 11:36

RHONDA COLLINS @ AM.JLL.COM

DETROIT

DETROIT CONSERVANCY
DETROIT, MI

CAMPBELL

ORIAL TERRACE

DETROIT, MI

ISSUE

OWNER REVIEW
JULY 2016

PROJECT NUMBER: 2016061.00

Anderson
architecture urban design

DATE: 07/14/16
SCALE: AS SHOWN
DRAWN BY: J. HARRIS
CHECKED BY: J. HARRIS

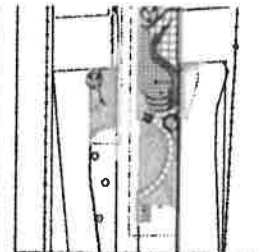
DRAWING INDEX

NO.	DESCRIPTION
00	COVER SHEET
10	TOPOGRAPHIC SURVEY
11	SITE DEMOLITION PLAN
12	SITE LAYOUT PLAN
13	SITE GRADING PLAN
14	STORM SEWER PLAN
15	SITE DETAILS
16	LANDSCAPE PLAN
17	LANDSCAPE DETAILS
18	CAUGHT ROOF PLAN AND ELEVATIONS
19	ROOF DETAILS/NOTES
20	GENERAL NOTES AND ABBREVIATIONS
21	EASTING ADJUSTMENT MODIFICATION PLAN & ELEVATIONS
22	CANOPY ADJUSTMENT MODIFICATION DETAILS
23	CANOPY PLAN
24	CANOPY SECTIONS-1
25	CANOPY SECTIONS-2
26	REGULATORY AND DETAILS

LOCATION MAP



SITE MAP



PROJECT IMAGE



OWNER

DETROIT CONSERVANCY
1000 EAST WILSON AVENUE
DETROIT, MI 48207
P 313.963.1111
WWW.DETROITCONSERVANCY.ORG

CIVIL ELECTRICAL AND STRUCTURAL ENGINEER

NAME: TERRY
ADDRESS: 1000 EAST WILSON AVENUE
DETROIT, MI 48207
P 313.963.1111

ARCHITECT/ LANDSCAPE ARCHITECT

HARRIS HARRIS ARCHITECTS ASSOCIATES
1000 EAST WILSON AVENUE
DETROIT, MI 48207
P 313.963.1111
WWW.HARRISHARRISARCHITECTS.COM

HamiltonAnderson
 Landscape Architecture

Hamilton Anderson Associates, Inc.
 1402 Randolph Road, 200
 Detroit, MI 48207
 P 313 961 0200 / F 313 961 0200
 www.hamiltonanderson.com

DATE: 08/14/13
 PROJECT: C55.2
 SHEET: 13 OF 13

**DETROIT INTERPROFIT
 CONSERVANCY**
 1402 Randolph Road, 200
 Detroit, MI 48207

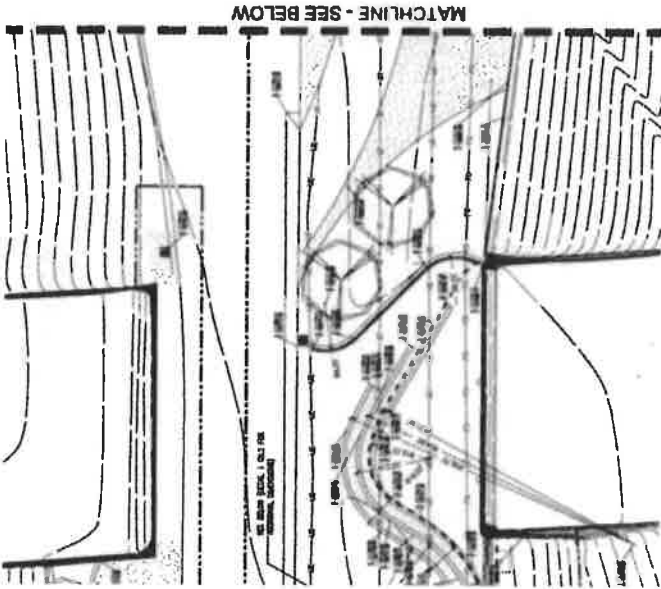
City of Detroit

PROJECT NO.	C55.2
DATE	08/14/13
PROJECT NAME	CAMPBELL MEMORIAL TERRACE
PROJECT LOCATION	1402 RANDOLPH ROAD, DETROIT, MI 48207
PROJECT OWNER	DETROIT INTERPROFIT CONSERVANCY
PROJECT ARCHITECT	DETROIT INTERPROFIT CONSERVANCY
PROJECT ENGINEER	DETROIT INTERPROFIT CONSERVANCY
PROJECT LANDSCAPE ARCHITECT	HAMILTON ANDERSON ASSOCIATES, INC.

**Site Plan
 CAMPBELL MEMORIAL
 TERRACE
 SITE LAYOUT PLAN**

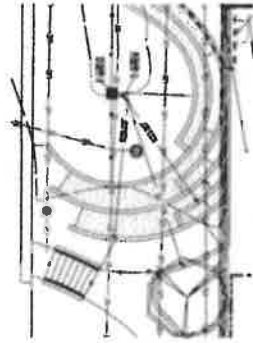
DATE	08/14/13
PROJECT NO.	C55.2
PROJECT NAME	CAMPBELL MEMORIAL TERRACE
PROJECT LOCATION	1402 RANDOLPH ROAD, DETROIT, MI 48207
PROJECT OWNER	DETROIT INTERPROFIT CONSERVANCY
PROJECT ARCHITECT	DETROIT INTERPROFIT CONSERVANCY
PROJECT ENGINEER	DETROIT INTERPROFIT CONSERVANCY
PROJECT LANDSCAPE ARCHITECT	HAMILTON ANDERSON ASSOCIATES, INC.

C55.2



LEGEND

- PROJECT LOT LINE
- LOT LINE
- LOT LINE & PROPERTY
- EXIST. TREE
- REMOVE
- ELECTRIC SERVICE
- EXISTING TREE
- REMOVE TREE
- REMOVE TREE



ADDITIONAL RETAINING WALL DIMENSIONS

NOTES

1. SEE ARCHITECT'S PLAN FOR BUILDING FOOTPRINTS.
2. SEE ARCHITECT'S PLAN FOR EXISTING TREES.
3. SEE ARCHITECT'S PLAN FOR EXISTING UTILITY LINES.



SCALE: 1" = 10'-0"

811
 Call Before you Dig

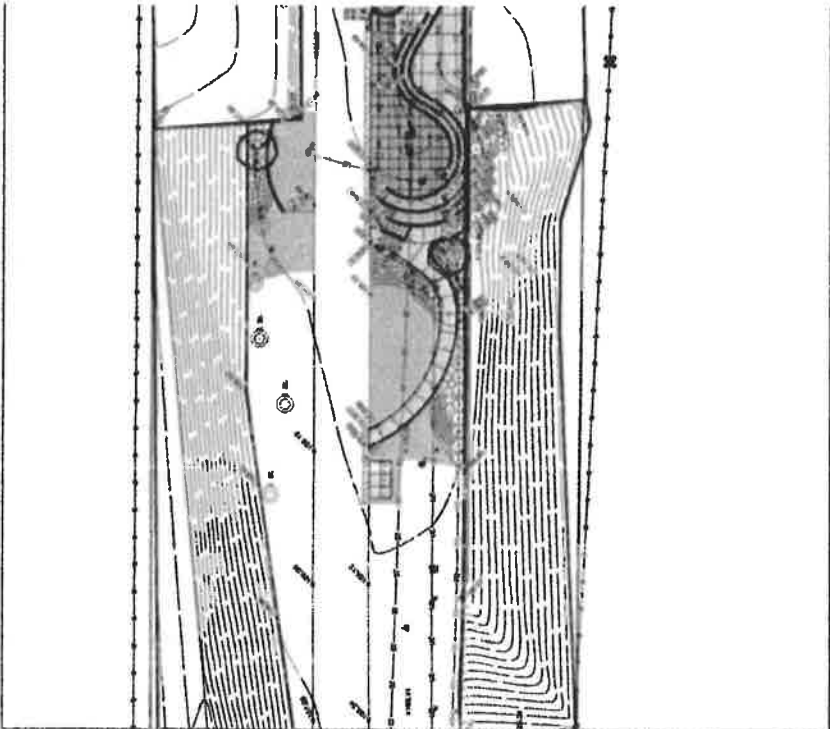
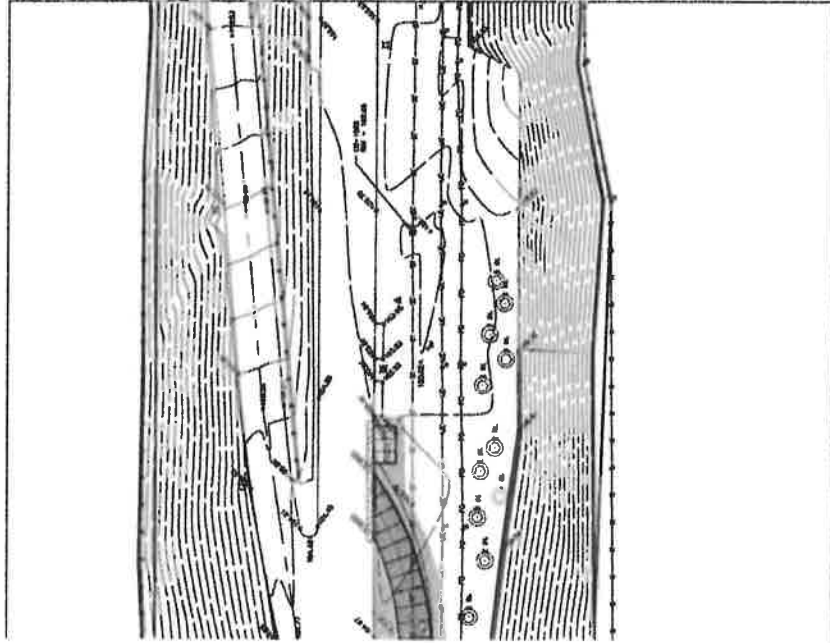
HamiltonAnderson
 CONSULTING ENGINEERS, ARCHITECTS, PLANNERS, AND LANDSCAPE ARCHITECTS

10000 Lakeshore Drive, Suite 200
 Detroit, Michigan 48206
 P 313.224.1200 F 313.224.1270
 www.hamiltonanderson.com

DATE: 05/11/11
 DRAWN BY: J. J. JONES
 CHECKED BY: J. J. JONES

CLIENT
**DETROIT RIVERFRONT
 CONSERVANCY**
 10000 LAKESHORE DRIVE, SUITE 200
 DETROIT, MI 48206

DATE: 05/11/11



NO. 1	PROPOSED GRADING	10/20/10
NO. 2	EXISTING GRADING	10/20/10

PROJECT
**CAMPBELL MEMORIAL
 TERRACE**

DESIGNED BY
**PROPOSED GRADING
 PLAN**

PROJECT NO.	10000 LAKESHORE DRIVE, SUITE 200
DATE	05/11/11
SCALE	AS SHOWN



C6.1

HamiltonAnderson
 CONSULTING ENGINEERS AND ARCHITECTS

Hamilton Anderson Associates, Inc.
 10000 Woodward Ave., Suite 200
 Detroit, Michigan 48202
 P 313 961-1270 F 313 961-1279
 PROJECT: C66.2

DATE: 11/11/08
 DRAWING NO: 11/11/08

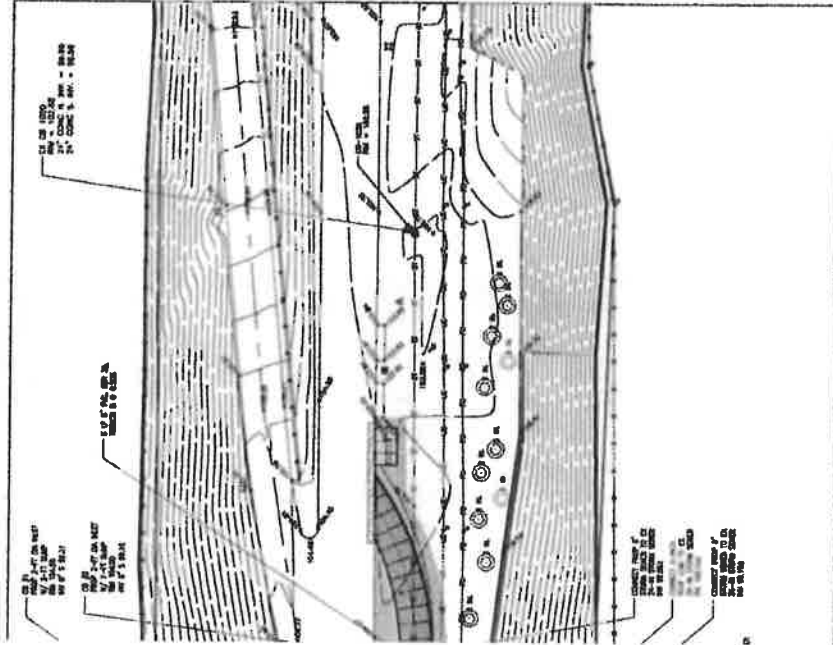
OWNER:
**DETROIT RIVERFRONT
 CONSERVANCY**
 10000 Woodward Ave., Suite 200
 Detroit, Michigan 48202

NO. OF SHEETS	11/22/08
DATE	
BY	
CHECKED BY	
APPROVED BY	

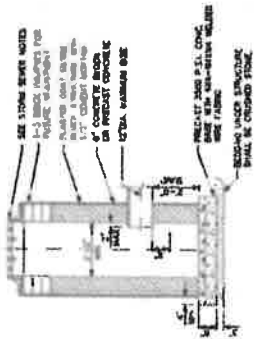
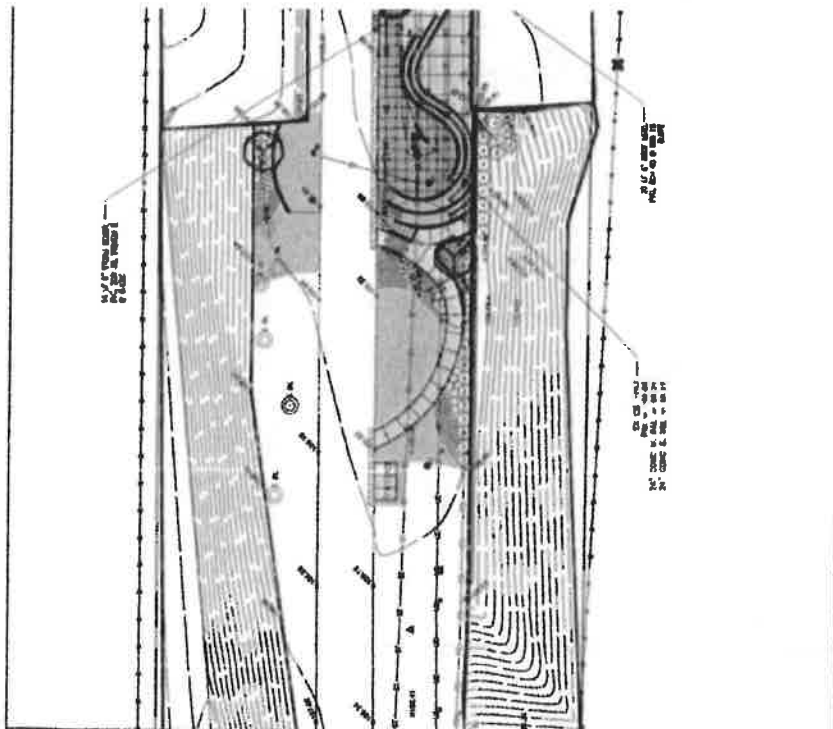
PAGE:
**CAMPBELL MEMORIAL
 TERRACE**

PROJECT NO:
**PROPOSED STORM
 SEWER PLAN**

DATE	
BY	
CHECKED BY	
APPROVED BY	



- QUANTITIES PER SHEET**
- 2 EA STANDARD STORM INLET W/ 1" SUMP
 - 2 EA CONCRETE 6-INCH STORM SEWER TO EX. 24-INCH STORM SEWER
 - 1 EA CONCRETE 6-INCH ROOF LEAD TO EX. 24-INCH STORM SEWER
 - 20 LF 6-INCH STORM SEWER TO EX. 24-INCH STORM SEWER
 - 1 EA 6-INCH TO 6-INCH OR LARGER ADAPTER



STANDARD INLET W/ 1" SUMP
 NOT TO SCALE



C66.2

CLIENT
**DETROIT RIVERFRONT
CONSERVANCY**
1000 WESTWOOD BLVD., SUITE 100
DETROIT, MI 48202

4/1/10

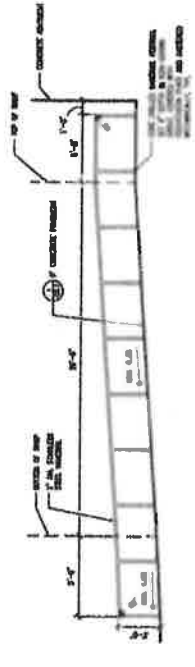
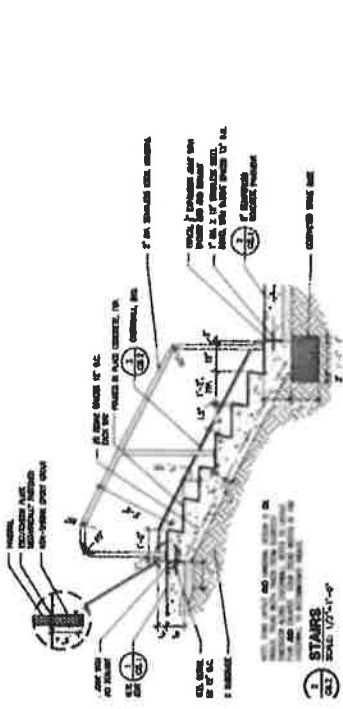
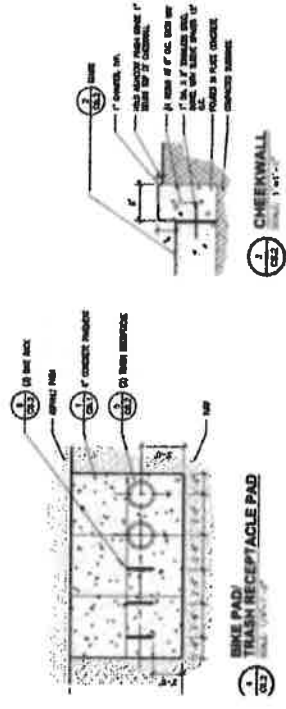
Project	CAMPBELL MEMORIAL TERRACE
Phase	Site Details
Prepared by	J. Hamilton
Checked by	C. Anderson
Date	4/1/10

Project
**CAMPBELL MEMORIAL
TERRACE**
Phase
SITE DETAILS

Prepared by	J. Hamilton
Checked by	C. Anderson
Date	4/1/10

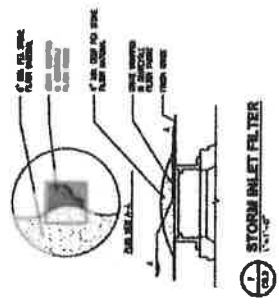


Sheet No.
C8.2

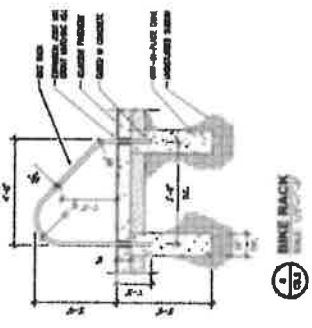


NOTE: VERIFY SPACING OF HANDRAILS TO EXCEED CODE REQUIREMENTS. VERIFY SPACING OF HANDRAILS TO EXCEED CODE REQUIREMENTS. VERIFY SPACING OF HANDRAILS TO EXCEED CODE REQUIREMENTS.

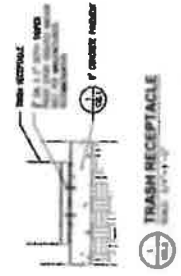
1
**UNFOLDED RAMP
AND HANDRAIL ELEVATION**
SCALE: 1/8\"/>



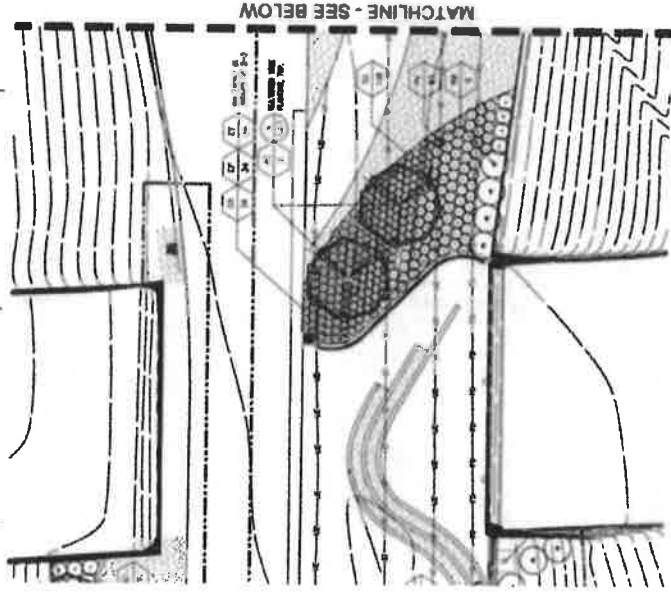
1
STORM INLET FILTER
SCALE: 1/8\"/>



1
BIKE RACK
SCALE: 1/8\"/>

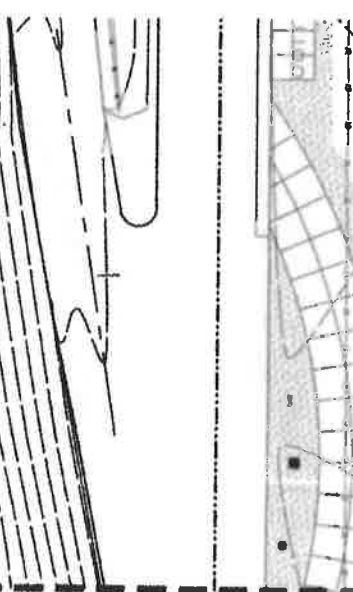
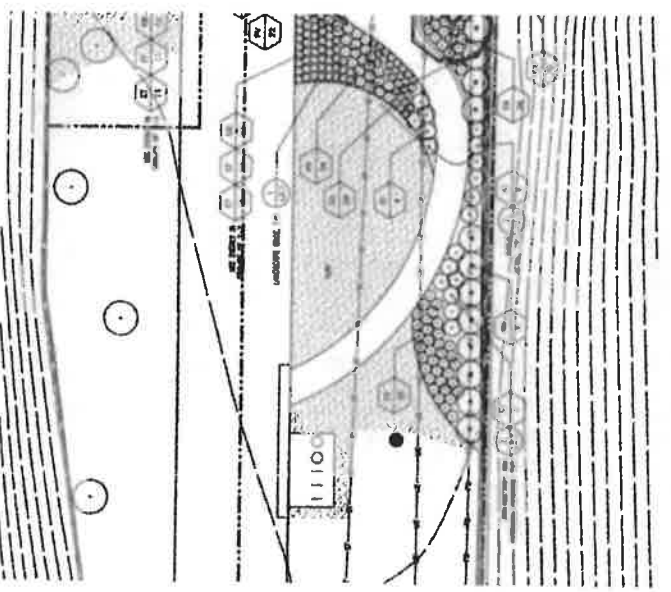
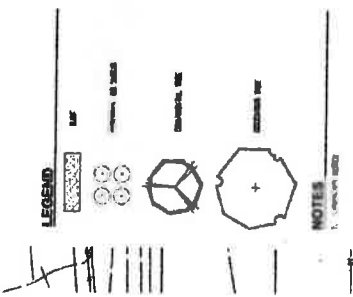


1
TRASH RECEPTACLE
SCALE: 1/8\"/>



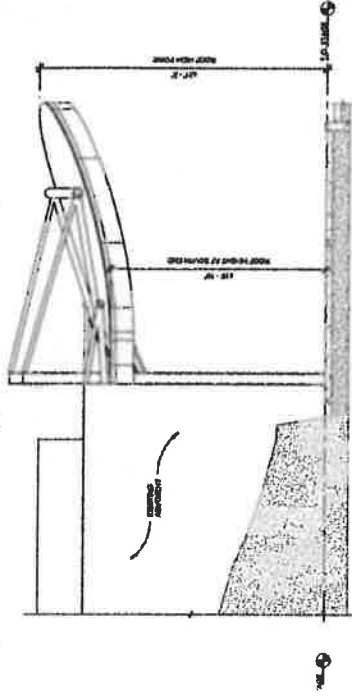
PLANT LIST

CODE	QTY	SYMBOL AND SIZE	COMMENTS
01	1	10" DB PLANTER	10" DB PLANTER
02	1	12" DB PLANTER	12" DB PLANTER
03	1	14" DB PLANTER	14" DB PLANTER
04	1	16" DB PLANTER	16" DB PLANTER
05	1	18" DB PLANTER	18" DB PLANTER
06	1	20" DB PLANTER	20" DB PLANTER
07	1	22" DB PLANTER	22" DB PLANTER
08	1	24" DB PLANTER	24" DB PLANTER
09	1	26" DB PLANTER	26" DB PLANTER
10	1	28" DB PLANTER	28" DB PLANTER
11	1	30" DB PLANTER	30" DB PLANTER
12	1	32" DB PLANTER	32" DB PLANTER
13	1	34" DB PLANTER	34" DB PLANTER
14	1	36" DB PLANTER	36" DB PLANTER
15	1	38" DB PLANTER	38" DB PLANTER
16	1	40" DB PLANTER	40" DB PLANTER
17	1	42" DB PLANTER	42" DB PLANTER
18	1	44" DB PLANTER	44" DB PLANTER
19	1	46" DB PLANTER	46" DB PLANTER
20	1	48" DB PLANTER	48" DB PLANTER
21	1	50" DB PLANTER	50" DB PLANTER
22	1	52" DB PLANTER	52" DB PLANTER
23	1	54" DB PLANTER	54" DB PLANTER
24	1	56" DB PLANTER	56" DB PLANTER
25	1	58" DB PLANTER	58" DB PLANTER
26	1	60" DB PLANTER	60" DB PLANTER

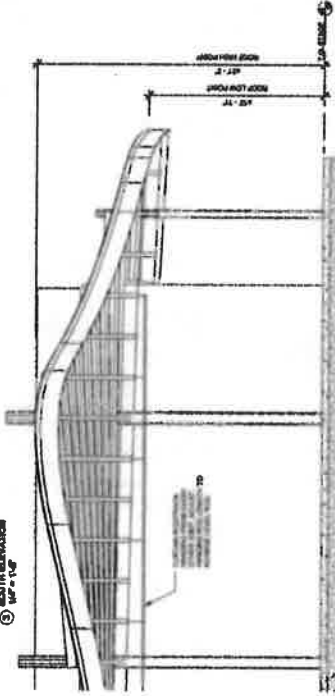


PROJECT NO.	1000000000
DATE	01/15/10
SCALE	1/8" = 1'-0"
PROJECT NAME	DETROIT RIVERFRONT CONSERVANCY
ARCHITECT	HAMILTON ANDERSON ASSOCIATES, INC.
PROJECT LOCATION	1000000000
PROJECT DESCRIPTION	DETROIT RIVERFRONT CONSERVANCY
PROJECT PHASE	CONCEPT DESIGN
PROJECT STATUS	CONCEPT DESIGN
PROJECT CONTACT	DETROIT RIVERFRONT CONSERVANCY
PROJECT ADDRESS	1000000000
PROJECT CITY	DETROIT, MI
PROJECT STATE	MI
PROJECT COUNTRY	USA

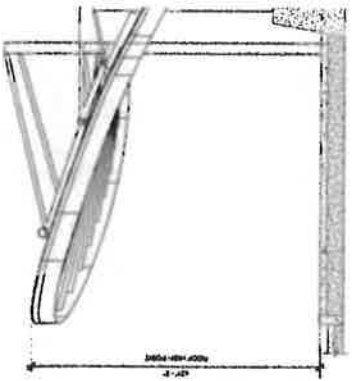
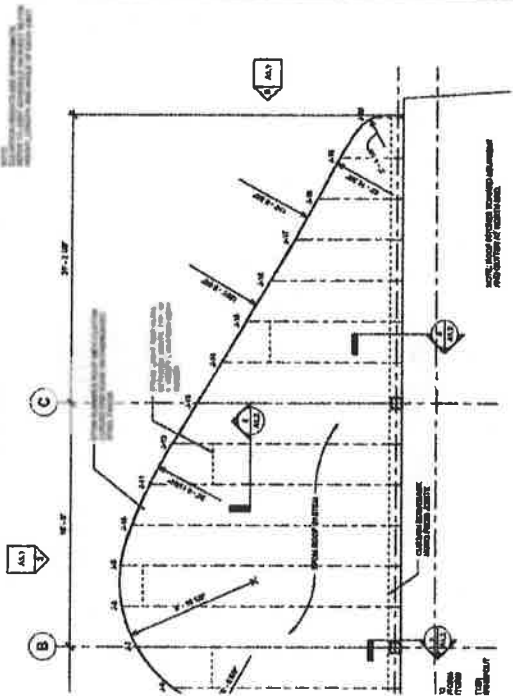
PROJECT NO.	1000000000
DATE	01/15/10
SCALE	1/8" = 1'-0"
PROJECT NAME	DETROIT RIVERFRONT CONSERVANCY
ARCHITECT	HAMILTON ANDERSON ASSOCIATES, INC.
PROJECT LOCATION	1000000000
PROJECT DESCRIPTION	DETROIT RIVERFRONT CONSERVANCY
PROJECT PHASE	CONCEPT DESIGN
PROJECT STATUS	CONCEPT DESIGN
PROJECT CONTACT	DETROIT RIVERFRONT CONSERVANCY
PROJECT ADDRESS	1000000000
PROJECT CITY	DETROIT, MI
PROJECT STATE	MI
PROJECT COUNTRY	USA



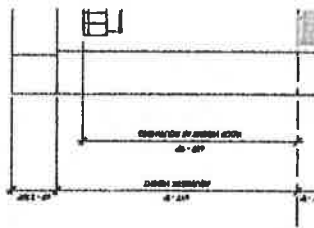
② SOUTH ELEVATION
1/8" = 1'-0"



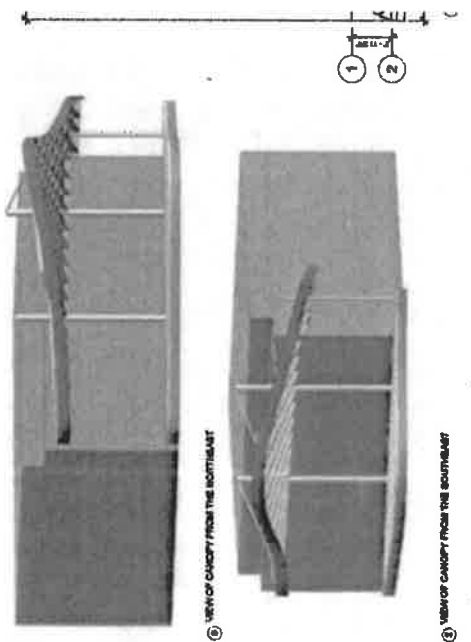
③ EAST ELEVATION
1/8" = 1'-0"



④ NORTH ELEVATION
1/8" = 1'-0"



⑤ WEST ELEVATION
1/8" = 1'-0"



① VIEW OF CANOPY FROM THE SOUTH/EAST

② VIEW OF CANOPY FROM THE SOUTH/WEST

HamiltonAnderson

HamiltonAnderson Associates, Inc.
 10000 Woodward Avenue, Suite 1000
 Detroit, Michigan 48202
 (313) 963-1000
 FAX (313) 963-1001
 www.hamiltonanderson.com

**DETROIT RIVERFRONT
 CONSERVANCY**

1000 Woodward Avenue, Suite 1000
 Detroit, Michigan 48202
 (313) 963-1000

Project Name	DETROIT RIVERFRONT CONSERVANCY
Project Number	10000
Revision	01
Date	01/15/01
Drawn By	...
Checked By	...
Scale	AS SHOWN

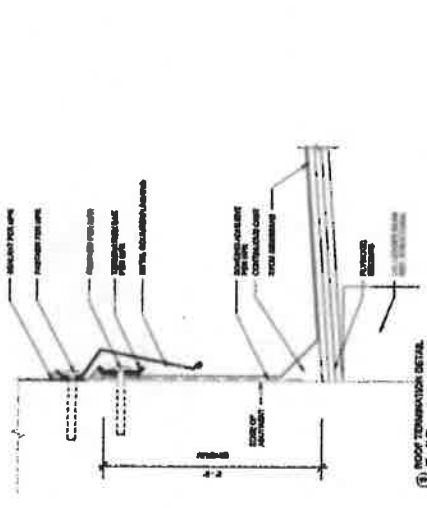
**CAMPBELL MEMORIAL
 TERRACE**

Roof Details

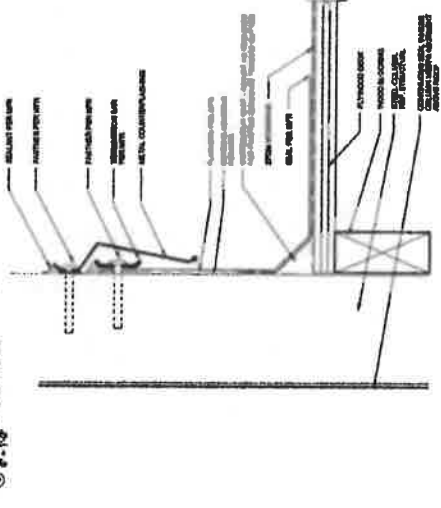
ROOF DETAILSNOTES

Project Number	10000
Revision	01
Date	01/15/01
Drawn By	...
Checked By	...
Scale	AS SHOWN

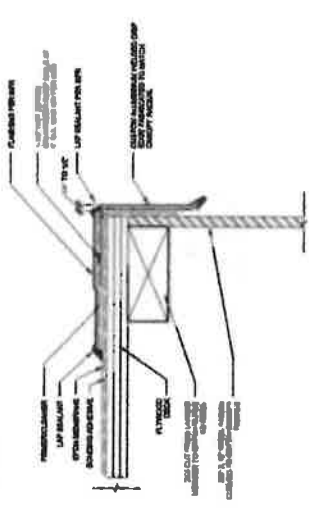
A1.2



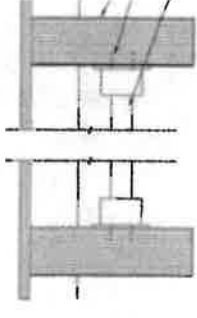
① ROOF TRANSMISSION DETAIL
 2'-0" x 1'-0"



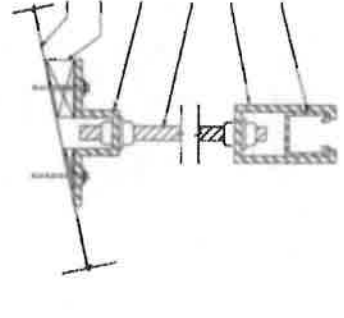
② ROOF PENETRATION AT COLUMN
 2'-0" x 1'-0"



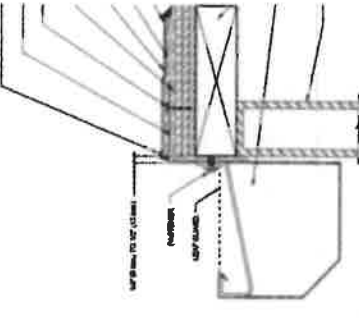
③ ROOF EDGE DETAIL
 2'-0" x 1'-0"



④ STAIR LOBBY ROOF DETAIL
 2'-0" x 1'-0"



⑤ CONCRETE ROOF SUPPORT DETAIL
 2'-0" x 1'-0"



⑥ CURTAIN DETAIL
 2'-0" x 1'-0"

HamiltonAnderson
 ARCHITECTS

1000 Michigan Avenue, S.E.
 Atlanta, Georgia 30331
 Phone: (404) 525-1100
 Fax: (404) 525-1101

PROJECT NO. 1000
 SHEET NO. S-2

**DETROIT RIVERFRONT
 CONSERVANCY**

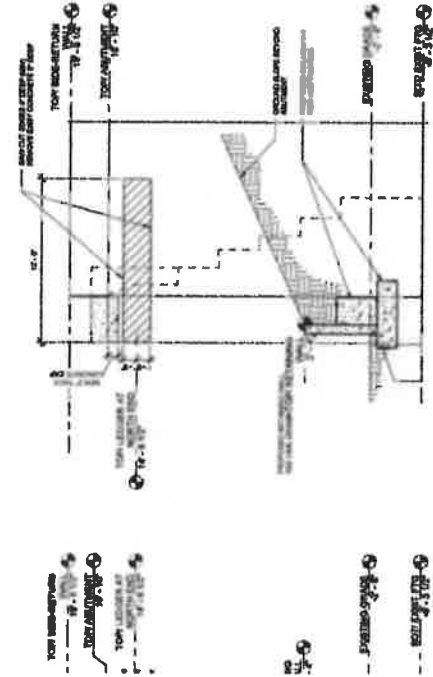
1000 Michigan Avenue, S.E.
 Atlanta, Georgia 30331

**CAMPBELL MEMORIAL
 TERRACE**

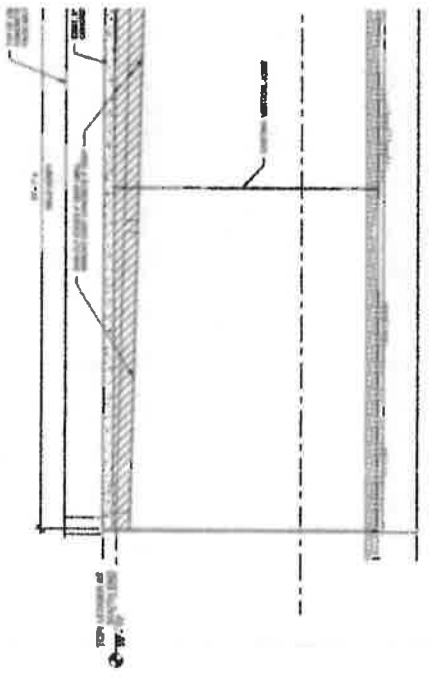
**EXISTING ABUTMENT
 MODIFICATION PLAN &
 ELEVATIONS**

DATE: 10/1/00
 DRAWN BY: [Name]
 CHECKED BY: [Name]

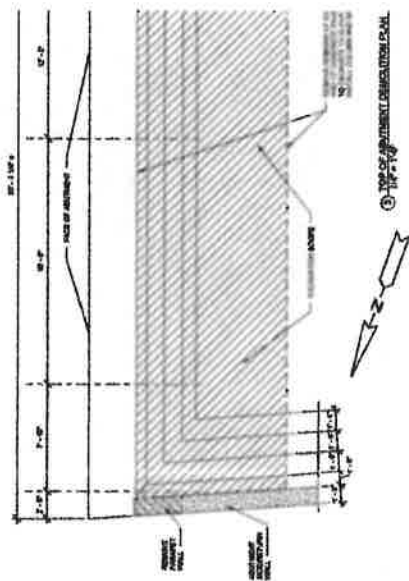
S-2



③ EXISTING MODIFICATION ELEVATION



① EXISTING MODIFICATION ELEVATION



② TOP OF ABUTMENT MODIFICATION PLAN

HamiltonAnderson
 ARCHITECTS

1000 Woodward Avenue, Suite 200
 Detroit, Michigan 48226
 Telephone: (313) 963-8100
 Fax: (313) 963-8101
 www.hamiltonanderson.com

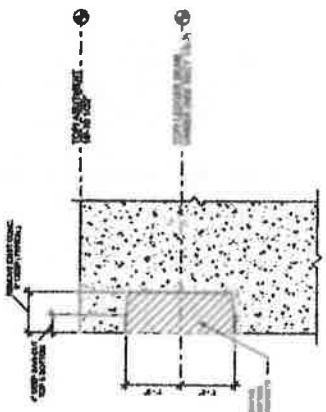
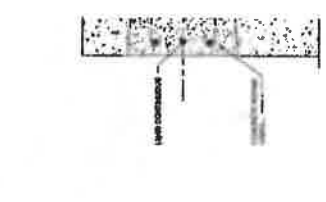
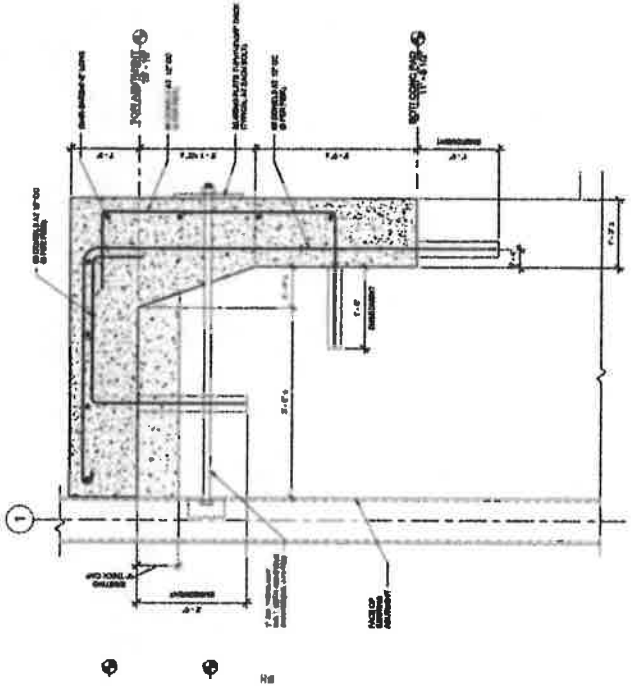
City of
**DETROIT RIVERFRONT
 CONSERVANCY**
 20000 Woodward Avenue, Suite 200
 Detroit, MI 48226

**CAMPBELL MEMORIAL
 TERRACE**

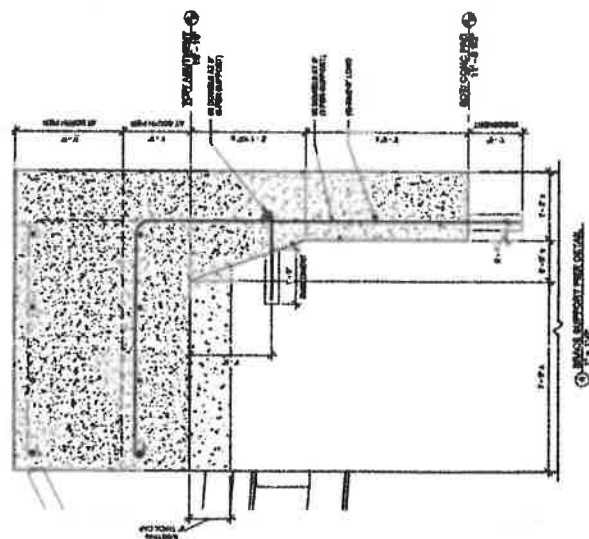
Client: City of Detroit
**EXISTING ABUTMENT
 MODIFICATION
 DETAILS**

Prepared by: [Name]
 Date: 11/11/11

S-3



ABUTMENT MODIFICATION - CONCRETE



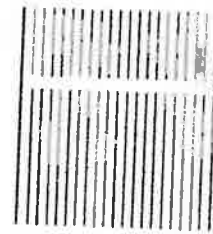
COLUMN SUPPORT DETAIL

HamiltonAnderson
 ARCHITECTS

1000 Michigan Avenue, S.E.
 Atlanta, Georgia 30334
 404.525.1234
 FAX 404.525.1235
 www.hamiltonanderson.com

**DETROIT RIVERFRONT
 CONSERVANCY**

1000 Michigan Avenue, S.E.
 Atlanta, Georgia 30334

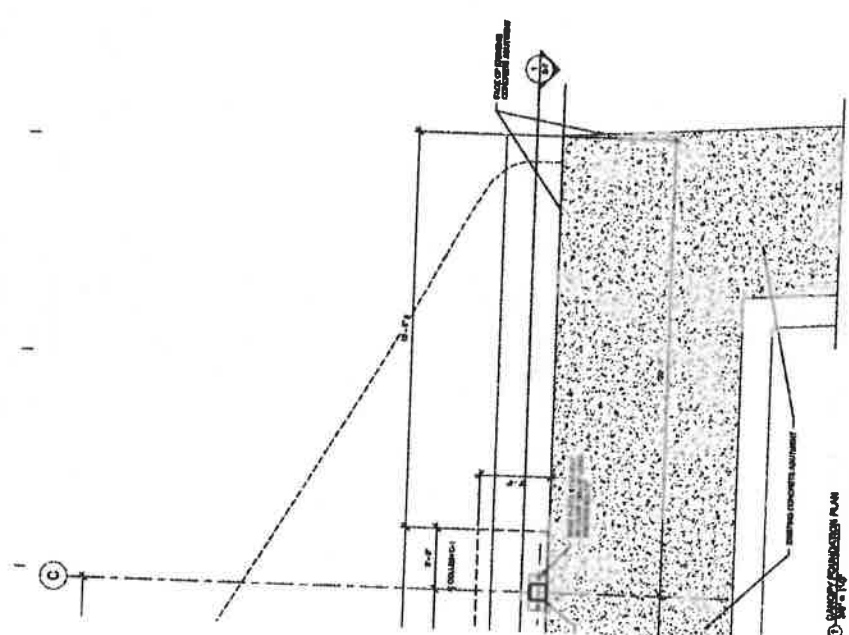


**CAMPBELL MEMORIAL
 TERRACE**

**CANOPY FOUNDATION
 PLAN**

Project: Campbell Memorial Terrace
 Client: Detroit Riverfront Conservancy
 Date: 10/10/08

S-4

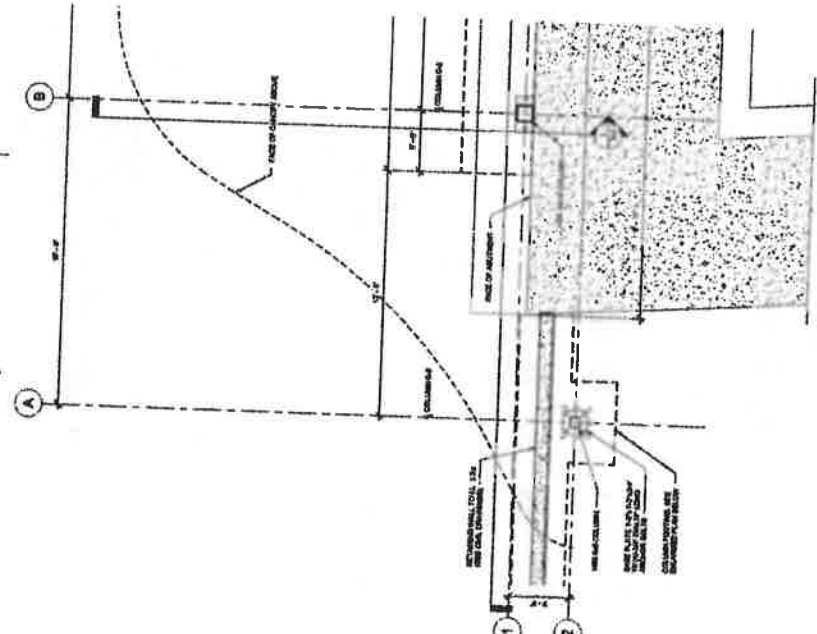


① CANOPY FOUNDATION PLAN

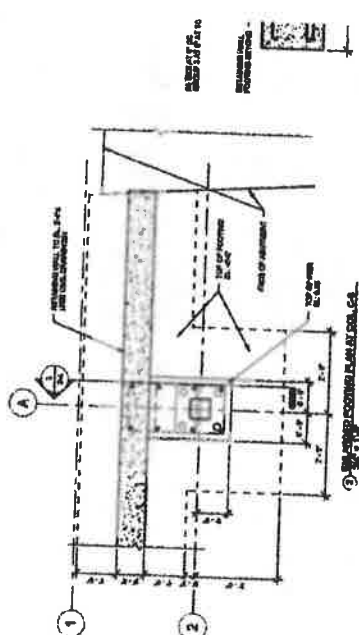
RETAINING WALL

SEE SHEET S-3

SEE SHEET S-5



② CANOPY FOUNDATION PLAN



③ CANOPY FOUNDATION PLAN

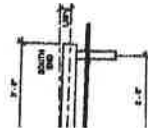
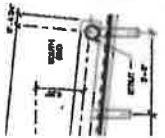
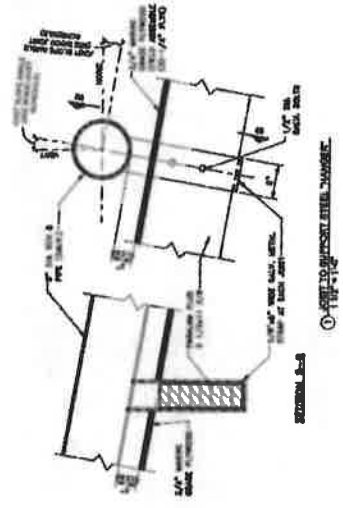
HamiltonAnderson
 ARCHITECTS
 1000 Woodward Avenue
 Detroit, Michigan 48226
 P 313.963.7333 F 313.963.7334
 hamp@hamiltonanderson.com

**DETROIT RIVERFRONT
 CONSERVANCY**
 CAMPBELL MEMORIAL TERRACE
 1000 Woodward Avenue
 Detroit, Michigan 48226

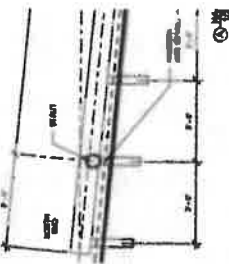
**CAMPBELL MEMORIAL
 TERRACE**
 SCHEDULES AND
 DETAILS

Prepared for: **DETROIT RIVERFRONT CONSERVANCY**
 Project Name: **CAMPBELL MEMORIAL TERRACE**
 Date: **10/1/2010**

Sheet: **S-8**



2'-0"



2'-0"



CANOPY BEAM SCHEDULE

ITEM NO.	DESCRIPTION	TYPE	GRADE	SIZE
01	1x6x6	SP	SP	6x6
02	1x6x6	SP	SP	6x6
03	1x6x6	SP	SP	6x6
04	1x6x6	SP	SP	6x6
05	1x6x6	SP	SP	6x6
06	1x6x6	SP	SP	6x6
07	1x6x6	SP	SP	6x6
08	1x6x6	SP	SP	6x6
09	1x6x6	SP	SP	6x6
10	1x6x6	SP	SP	6x6

WOOD JOIST SCHEDULE

ITEM NO.	DESCRIPTION	TYPE	GRADE	SIZE
01	1x6x6	SP	SP	6x6
02	1x6x6	SP	SP	6x6
03	1x6x6	SP	SP	6x6
04	1x6x6	SP	SP	6x6
05	1x6x6	SP	SP	6x6
06	1x6x6	SP	SP	6x6
07	1x6x6	SP	SP	6x6
08	1x6x6	SP	SP	6x6
09	1x6x6	SP	SP	6x6
10	1x6x6	SP	SP	6x6
11	1x6x6	SP	SP	6x6
12	1x6x6	SP	SP	6x6
13	1x6x6	SP	SP	6x6
14	1x6x6	SP	SP	6x6
15	1x6x6	SP	SP	6x6
16	1x6x6	SP	SP	6x6
17	1x6x6	SP	SP	6x6
18	1x6x6	SP	SP	6x6
19	1x6x6	SP	SP	6x6
20	1x6x6	SP	SP	6x6

COLUMN SCHEDULE

ITEM NO.	DESCRIPTION	TYPE	GRADE	SIZE
01	1x6x6	SP	SP	6x6
02	1x6x6	SP	SP	6x6
03	1x6x6	SP	SP	6x6

