

TO: City Engineering Division, DPW
2 Woodward Ave., Suite 642
Detroit, Michigan 48226-3462
Survey Bureau: 313-224-3970

Petition: x930
"REVISED"

The proposed change in property (referred to on the other side of this sheet) would affect our services as follows:

- ☐ Not Involved
- ☐ Involved; but asking you to hold action on this petition until further notice.
- ☒ Involved; but no objections to the property change.
Within the Grand Blvd. TMSO District. New construction and changes to the exterior of any buildings would require P&DD review. Land use changes surrounding public right of ways would require Master Plan amendments, which are also facilitated by P&DD.
- ☐ Involved; objection to the property change.
- ☐ Involved; but no objections to the property change...provided as easement of the full width of the public right-of-way (street, alley or other public place) is reserved.
- ☐ Involved; the nature of our services and the estimated costs of removing and/or rerouting such services are:

Planning & Development Department

(Utility or City Department)

By 

Greg Moots-Lead Planner-Office of Zoning Innovation

Title

April 3, 17

Date

313-224-1358

Area code – Telephone number

"REVISED"

City of Detroit
**City Engineering Division, Department of Public Works
Survey Bureau**

NOTICE OF PROPOSED CHANGE IN PROPERTY

Date: 03/07/2017

Petition: x930

- ☐ AT&T Telecommunication
- ☐ Comcast Television (CATV)
- ☐ Detroit Edison (DTE)
- ☐ Fire Department
- ☐ Great Lakes Water Authority
- ☐ Michcon (DTE)
- ☒ Planning & Development Department
- ☐ Public Lighting Authority
- ☐ Public Lighting Department
- ☐ Police Department
- ☐ Solid Waste Division, DPW
- ☐ Street Design Bureau, DPW
- ☐ Street Maintenance Division, DPW
- ☐ Traffic Engineering Division, DPW
- ☐ Water and Sewerage Department
- ☐ _____

- ☐ Berm Use
- ☒ Conversion to Easement
- ☒ Dedication
- ☐ Encroachment
- ☐ Temporary Closing
- ☒ Vacation

A petition drawing is attached. Property shown on the attached print is proposed to be changed as indicated. Kindly report (using the back of this sheet) the nature of your services, if any affected by the proposed change and the estimated costs of removing and rerouting such services (if necessary).

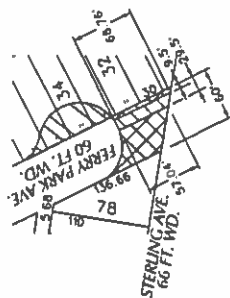
Please return one copy to City Engineering Division, DPW within two weeks of the submittal date. Retain one copy and print for you file.

Ron Brundidge, Director, Department of Public Works

By: Richard Doherty, CED DPW
City Engineer

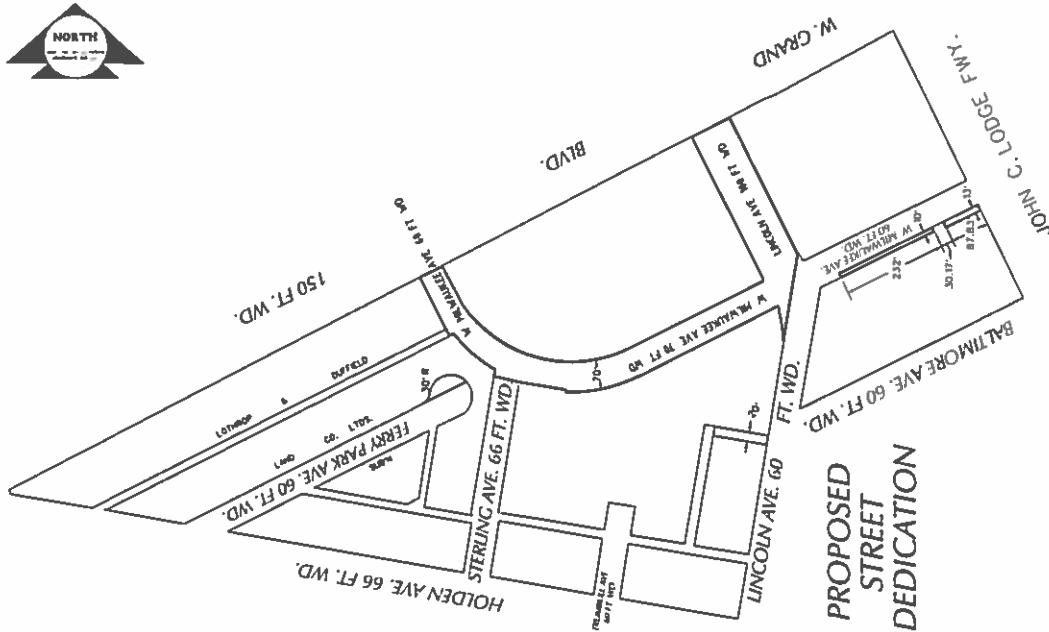
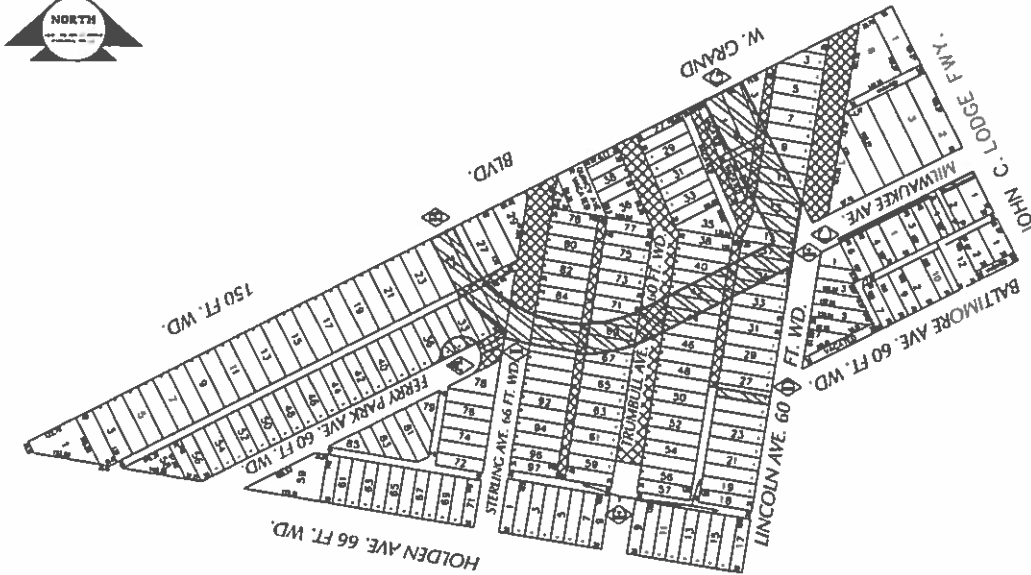
PETITION NO. 930
 GIFFELS WEBSTER
 28 W. ADAMS, SUITE 1200
 DETROIT, MICHIGAN 48226
 C/O JOHN REDASH
 PHONE NO. 313 962-4442

"REVISED"



- REQUESTED FOR DEDICATION
- CONVERSION TO EASEMENT
- OUTRIGHT VACATION

NO.	DESCRIPTION	DATE	BY	STATUS
1	FILED AT DETROIT	1/10/17	ESAM	FILED
2	FILED AT DETROIT	1/10/17	ESAM	FILED
3	FILED AT DETROIT	1/10/17	ESAM	FILED
4	FILED AT DETROIT	1/10/17	ESAM	FILED
5	FILED AT DETROIT	1/10/17	ESAM	FILED
6	FILED AT DETROIT	1/10/17	ESAM	FILED
7	FILED AT DETROIT	1/10/17	ESAM	FILED
8	FILED AT DETROIT	1/10/17	ESAM	FILED
9	FILED AT DETROIT	1/10/17	ESAM	FILED
10	FILED AT DETROIT	1/10/17	ESAM	FILED
11	FILED AT DETROIT	1/10/17	ESAM	FILED
12	FILED AT DETROIT	1/10/17	ESAM	FILED
13	FILED AT DETROIT	1/10/17	ESAM	FILED
14	FILED AT DETROIT	1/10/17	ESAM	FILED
15	FILED AT DETROIT	1/10/17	ESAM	FILED
16	FILED AT DETROIT	1/10/17	ESAM	FILED
17	FILED AT DETROIT	1/10/17	ESAM	FILED
18	FILED AT DETROIT	1/10/17	ESAM	FILED
19	FILED AT DETROIT	1/10/17	ESAM	FILED
20	FILED AT DETROIT	1/10/17	ESAM	FILED
21	FILED AT DETROIT	1/10/17	ESAM	FILED
22	FILED AT DETROIT	1/10/17	ESAM	FILED
23	FILED AT DETROIT	1/10/17	ESAM	FILED
24	FILED AT DETROIT	1/10/17	ESAM	FILED
25	FILED AT DETROIT	1/10/17	ESAM	FILED
26	FILED AT DETROIT	1/10/17	ESAM	FILED
27	FILED AT DETROIT	1/10/17	ESAM	FILED
28	FILED AT DETROIT	1/10/17	ESAM	FILED
29	FILED AT DETROIT	1/10/17	ESAM	FILED
30	FILED AT DETROIT	1/10/17	ESAM	FILED
31	FILED AT DETROIT	1/10/17	ESAM	FILED
32	FILED AT DETROIT	1/10/17	ESAM	FILED
33	FILED AT DETROIT	1/10/17	ESAM	FILED
34	FILED AT DETROIT	1/10/17	ESAM	FILED
35	FILED AT DETROIT	1/10/17	ESAM	FILED
36	FILED AT DETROIT	1/10/17	ESAM	FILED
37	FILED AT DETROIT	1/10/17	ESAM	FILED
38	FILED AT DETROIT	1/10/17	ESAM	FILED
39	FILED AT DETROIT	1/10/17	ESAM	FILED
40	FILED AT DETROIT	1/10/17	ESAM	FILED
41	FILED AT DETROIT	1/10/17	ESAM	FILED
42	FILED AT DETROIT	1/10/17	ESAM	FILED
43	FILED AT DETROIT	1/10/17	ESAM	FILED
44	FILED AT DETROIT	1/10/17	ESAM	FILED
45	FILED AT DETROIT	1/10/17	ESAM	FILED
46	FILED AT DETROIT	1/10/17	ESAM	FILED
47	FILED AT DETROIT	1/10/17	ESAM	FILED
48	FILED AT DETROIT	1/10/17	ESAM	FILED
49	FILED AT DETROIT	1/10/17	ESAM	FILED
50	FILED AT DETROIT	1/10/17	ESAM	FILED
51	FILED AT DETROIT	1/10/17	ESAM	FILED
52	FILED AT DETROIT	1/10/17	ESAM	FILED
53	FILED AT DETROIT	1/10/17	ESAM	FILED
54	FILED AT DETROIT	1/10/17	ESAM	FILED
55	FILED AT DETROIT	1/10/17	ESAM	FILED
56	FILED AT DETROIT	1/10/17	ESAM	FILED
57	FILED AT DETROIT	1/10/17	ESAM	FILED
58	FILED AT DETROIT	1/10/17	ESAM	FILED
59	FILED AT DETROIT	1/10/17	ESAM	FILED
60	FILED AT DETROIT	1/10/17	ESAM	FILED
61	FILED AT DETROIT	1/10/17	ESAM	FILED
62	FILED AT DETROIT	1/10/17	ESAM	FILED
63	FILED AT DETROIT	1/10/17	ESAM	FILED
64	FILED AT DETROIT	1/10/17	ESAM	FILED
65	FILED AT DETROIT	1/10/17	ESAM	FILED
66	FILED AT DETROIT	1/10/17	ESAM	FILED
67	FILED AT DETROIT	1/10/17	ESAM	FILED
68	FILED AT DETROIT	1/10/17	ESAM	FILED
69	FILED AT DETROIT	1/10/17	ESAM	FILED
70	FILED AT DETROIT	1/10/17	ESAM	FILED
71	FILED AT DETROIT	1/10/17	ESAM	FILED
72	FILED AT DETROIT	1/10/17	ESAM	FILED
73	FILED AT DETROIT	1/10/17	ESAM	FILED
74	FILED AT DETROIT	1/10/17	ESAM	FILED
75	FILED AT DETROIT	1/10/17	ESAM	FILED
76	FILED AT DETROIT	1/10/17	ESAM	FILED
77	FILED AT DETROIT	1/10/17	ESAM	FILED
78	FILED AT DETROIT	1/10/17	ESAM	FILED
79	FILED AT DETROIT	1/10/17	ESAM	FILED
80	FILED AT DETROIT	1/10/17	ESAM	FILED
81	FILED AT DETROIT	1/10/17	ESAM	FILED
82	FILED AT DETROIT	1/10/17	ESAM	FILED
83	FILED AT DETROIT	1/10/17	ESAM	FILED
84	FILED AT DETROIT	1/10/17	ESAM	FILED
85	FILED AT DETROIT	1/10/17	ESAM	FILED
86	FILED AT DETROIT	1/10/17	ESAM	FILED
87	FILED AT DETROIT	1/10/17	ESAM	FILED
88	FILED AT DETROIT	1/10/17	ESAM	FILED
89	FILED AT DETROIT	1/10/17	ESAM	FILED
90	FILED AT DETROIT	1/10/17	ESAM	FILED
91	FILED AT DETROIT	1/10/17	ESAM	FILED
92	FILED AT DETROIT	1/10/17	ESAM	FILED
93	FILED AT DETROIT	1/10/17	ESAM	FILED
94	FILED AT DETROIT	1/10/17	ESAM	FILED
95	FILED AT DETROIT	1/10/17	ESAM	FILED
96	FILED AT DETROIT	1/10/17	ESAM	FILED
97	FILED AT DETROIT	1/10/17	ESAM	FILED
98	FILED AT DETROIT	1/10/17	ESAM	FILED
99	FILED AT DETROIT	1/10/17	ESAM	FILED
100	FILED AT DETROIT	1/10/17	ESAM	FILED



(FOR OFFICE USE ONLY)

CARTO 31 D

REQUEST TO OUTRIGHT VACATE VARIOUS PUBLIC STREETS AND ALLEYS VARIOUS WIDTHS
 REQUEST CONVERSION TO EASEMENT A PORTION OF FERRY PARK AVE., 20 FT. WD.
 AND

REQUEST FOR DEDICATION LINCOLN AVE. 100 FT. WD., FERRY PARK AVE., 30 FT. RADIUS AND W. MILWAUKEE AVE. VARIOUS WIDTHS
 IN THE AREA BOUND BY JOHN C. LODGE FWY., BALTIMORE, LINCOLN, HOLDEN AVE. AND W. GRAND BLVD.

CITY OF DETROIT
 CITY ENGINEERING DEPARTMENT
 SURVEY BUREAU
 JOB NO. 01-01
 DRAWING NO. X 930

DATE 04-04-16
 BY WJW
 CHECKED
 APPROVED

