

"REVISED"

City of Detroit
City Engineering Division, Department of Public Works
Survey Bureau

NOTICE OF PROPOSED CHANGE IN PROPERTY

Date: 03/07/2017

Petition: x930

- | | |
|--|--|
| <input type="checkbox"/> AT&T Telecommunication | |
| <input type="checkbox"/> Comcast Television (CATV) | <input type="checkbox"/> Berm Use |
| <input type="checkbox"/> Detroit Edison (DTE) | |
| <input type="checkbox"/> Fire Department | <input checked="" type="checkbox"/> Conversion to Easement |
| <input type="checkbox"/> Great Lakes Water Authority | |
| <input type="checkbox"/> Michcon (DTE) | <input checked="" type="checkbox"/> Dedication |
| <input type="checkbox"/> Planning & Development Department | |
| <input type="checkbox"/> Public Lighting Authority | <input type="checkbox"/> Encroachment |
| <input type="checkbox"/> Public Lighting Department | |
| <input checked="" type="checkbox"/> Police Department | <input type="checkbox"/> Temporary Closing |
| <input type="checkbox"/> Solid Waste Division, DPW | |
| <input type="checkbox"/> Street Design Bureau, DPW | <input checked="" type="checkbox"/> Vacation |
| <input type="checkbox"/> Street Maintenance Division, DPW | |
| <input type="checkbox"/> Traffic Engineering Division, DPW | |
| <input type="checkbox"/> Water and Sewerage Department | |
| <input type="checkbox"/> _____ | |

A petition drawing is attached. Property shown on the attached print is proposed to be changed as indicated. Kindly report (using the back of this sheet) the nature of your services, if any affected by the proposed change and the estimated costs of removing and rerouting such services (if necessary).

Please return one copy to City Engineering Division, DPW within two weeks of the submittal date. Retain one copy and print for you file.

Ron Brundidge, Director, Department of Public Works

By: Richard Doherty, CED DPW
City Engineer

TO: City Engineering Division, DPW
2 Woodward Ave., Suite 642
Detroit, Michigan 48226-3462
Survey Bureau: 313-224-3970

Petition: x930
"REVISED"

The proposed change in property (referred to on the other side of this sheet) would affect our services as follows:

- ☐ Not Involved
- ☐ Involved; but asking you to hold action on this petition until further notice.
- ☐ Involved; but no objections to the property change.
- ☐ Involved; objection to the property change.
- ☒ Involved; but no objections to the property change...provided as easement of the full width of the public right-of-way (street, alley or other public place) is reserved.
- ☒ Involved; the nature of our services and the estimated costs of removing and/or rerouting such services are: *"NOTE" SEE ORIGINAL ATTACHMENT FROM 8-9-2016*

DETROIT POLICE DEPT 3RD PCT
(Utility or City Department)

CHRISTOPHER GIBSON 4649
By

POLICE OFFICER CODE ENFORCEMENT
Title

3-9-2017
Date

313 596-1310, 596-1363
Area code - Telephone number

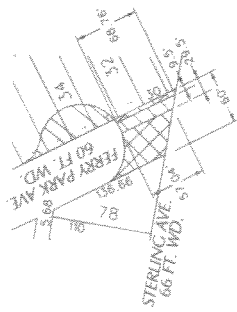
DENIED

APR 17 2017
[Signature]
THIRD PRECINCT

*Proposal would
limit access
to emergency
vehicles and
first responders*

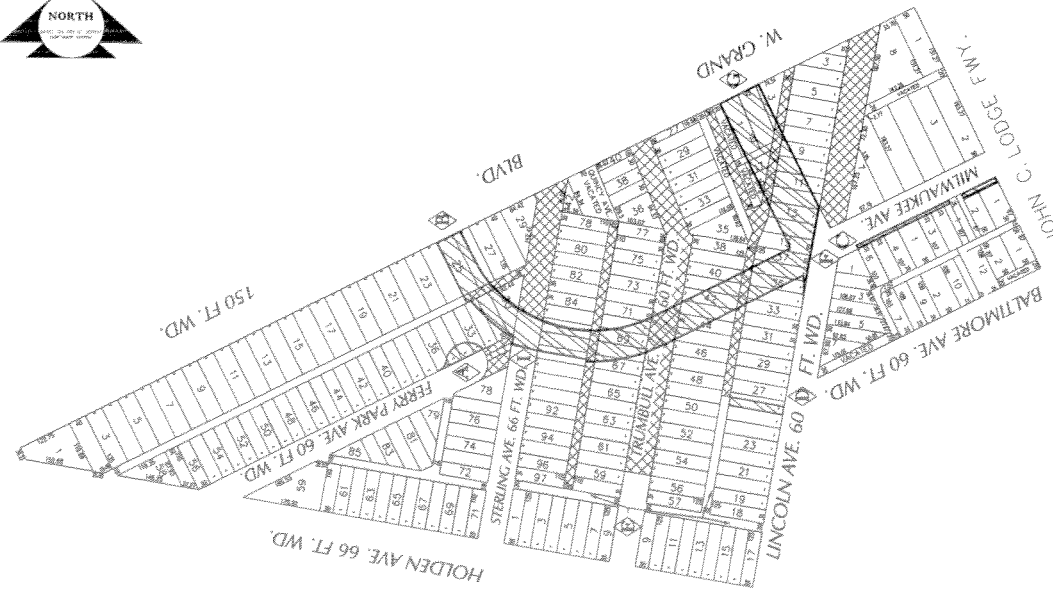
PETITION NO. 930
 GIFFELS WEBSTER
 28 W. ADAMS, SUITE 1200
 DETROIT, MICHIGAN 48226
 C/O JOHN REDASH
 PHONE NO. 313 962-4442

"REVISED"



- REQUESTED FOR DEDICATION
- CONVERSION TO EASEMENT
- OUTRIGHT VACATION

NO.	DESCRIPTION	DATE	BY	FOR
1	REVISION	04-04-16	WJW	WJW
2	REVISION	04-04-16	WJW	WJW
3	REVISION	04-04-16	WJW	WJW
4	REVISION	04-04-16	WJW	WJW
5	REVISION	04-04-16	WJW	WJW
6	REVISION	04-04-16	WJW	WJW
7	REVISION	04-04-16	WJW	WJW
8	REVISION	04-04-16	WJW	WJW
9	REVISION	04-04-16	WJW	WJW
10	REVISION	04-04-16	WJW	WJW
11	REVISION	04-04-16	WJW	WJW
12	REVISION	04-04-16	WJW	WJW
13	REVISION	04-04-16	WJW	WJW
14	REVISION	04-04-16	WJW	WJW
15	REVISION	04-04-16	WJW	WJW
16	REVISION	04-04-16	WJW	WJW
17	REVISION	04-04-16	WJW	WJW
18	REVISION	04-04-16	WJW	WJW
19	REVISION	04-04-16	WJW	WJW
20	REVISION	04-04-16	WJW	WJW
21	REVISION	04-04-16	WJW	WJW
22	REVISION	04-04-16	WJW	WJW
23	REVISION	04-04-16	WJW	WJW
24	REVISION	04-04-16	WJW	WJW
25	REVISION	04-04-16	WJW	WJW
26	REVISION	04-04-16	WJW	WJW
27	REVISION	04-04-16	WJW	WJW
28	REVISION	04-04-16	WJW	WJW
29	REVISION	04-04-16	WJW	WJW
30	REVISION	04-04-16	WJW	WJW
31	REVISION	04-04-16	WJW	WJW
32	REVISION	04-04-16	WJW	WJW
33	REVISION	04-04-16	WJW	WJW
34	REVISION	04-04-16	WJW	WJW
35	REVISION	04-04-16	WJW	WJW
36	REVISION	04-04-16	WJW	WJW
37	REVISION	04-04-16	WJW	WJW
38	REVISION	04-04-16	WJW	WJW
39	REVISION	04-04-16	WJW	WJW
40	REVISION	04-04-16	WJW	WJW
41	REVISION	04-04-16	WJW	WJW
42	REVISION	04-04-16	WJW	WJW
43	REVISION	04-04-16	WJW	WJW
44	REVISION	04-04-16	WJW	WJW
45	REVISION	04-04-16	WJW	WJW
46	REVISION	04-04-16	WJW	WJW
47	REVISION	04-04-16	WJW	WJW
48	REVISION	04-04-16	WJW	WJW
49	REVISION	04-04-16	WJW	WJW
50	REVISION	04-04-16	WJW	WJW
51	REVISION	04-04-16	WJW	WJW
52	REVISION	04-04-16	WJW	WJW
53	REVISION	04-04-16	WJW	WJW
54	REVISION	04-04-16	WJW	WJW
55	REVISION	04-04-16	WJW	WJW
56	REVISION	04-04-16	WJW	WJW
57	REVISION	04-04-16	WJW	WJW
58	REVISION	04-04-16	WJW	WJW
59	REVISION	04-04-16	WJW	WJW
60	REVISION	04-04-16	WJW	WJW
61	REVISION	04-04-16	WJW	WJW
62	REVISION	04-04-16	WJW	WJW
63	REVISION	04-04-16	WJW	WJW
64	REVISION	04-04-16	WJW	WJW
65	REVISION	04-04-16	WJW	WJW
66	REVISION	04-04-16	WJW	WJW
67	REVISION	04-04-16	WJW	WJW
68	REVISION	04-04-16	WJW	WJW
69	REVISION	04-04-16	WJW	WJW
70	REVISION	04-04-16	WJW	WJW
71	REVISION	04-04-16	WJW	WJW
72	REVISION	04-04-16	WJW	WJW
73	REVISION	04-04-16	WJW	WJW
74	REVISION	04-04-16	WJW	WJW
75	REVISION	04-04-16	WJW	WJW
76	REVISION	04-04-16	WJW	WJW
77	REVISION	04-04-16	WJW	WJW
78	REVISION	04-04-16	WJW	WJW
79	REVISION	04-04-16	WJW	WJW
80	REVISION	04-04-16	WJW	WJW
81	REVISION	04-04-16	WJW	WJW
82	REVISION	04-04-16	WJW	WJW
83	REVISION	04-04-16	WJW	WJW
84	REVISION	04-04-16	WJW	WJW
85	REVISION	04-04-16	WJW	WJW
86	REVISION	04-04-16	WJW	WJW
87	REVISION	04-04-16	WJW	WJW
88	REVISION	04-04-16	WJW	WJW
89	REVISION	04-04-16	WJW	WJW
90	REVISION	04-04-16	WJW	WJW
91	REVISION	04-04-16	WJW	WJW
92	REVISION	04-04-16	WJW	WJW
93	REVISION	04-04-16	WJW	WJW
94	REVISION	04-04-16	WJW	WJW
95	REVISION	04-04-16	WJW	WJW
96	REVISION	04-04-16	WJW	WJW
97	REVISION	04-04-16	WJW	WJW
98	REVISION	04-04-16	WJW	WJW
99	REVISION	04-04-16	WJW	WJW
100	REVISION	04-04-16	WJW	WJW



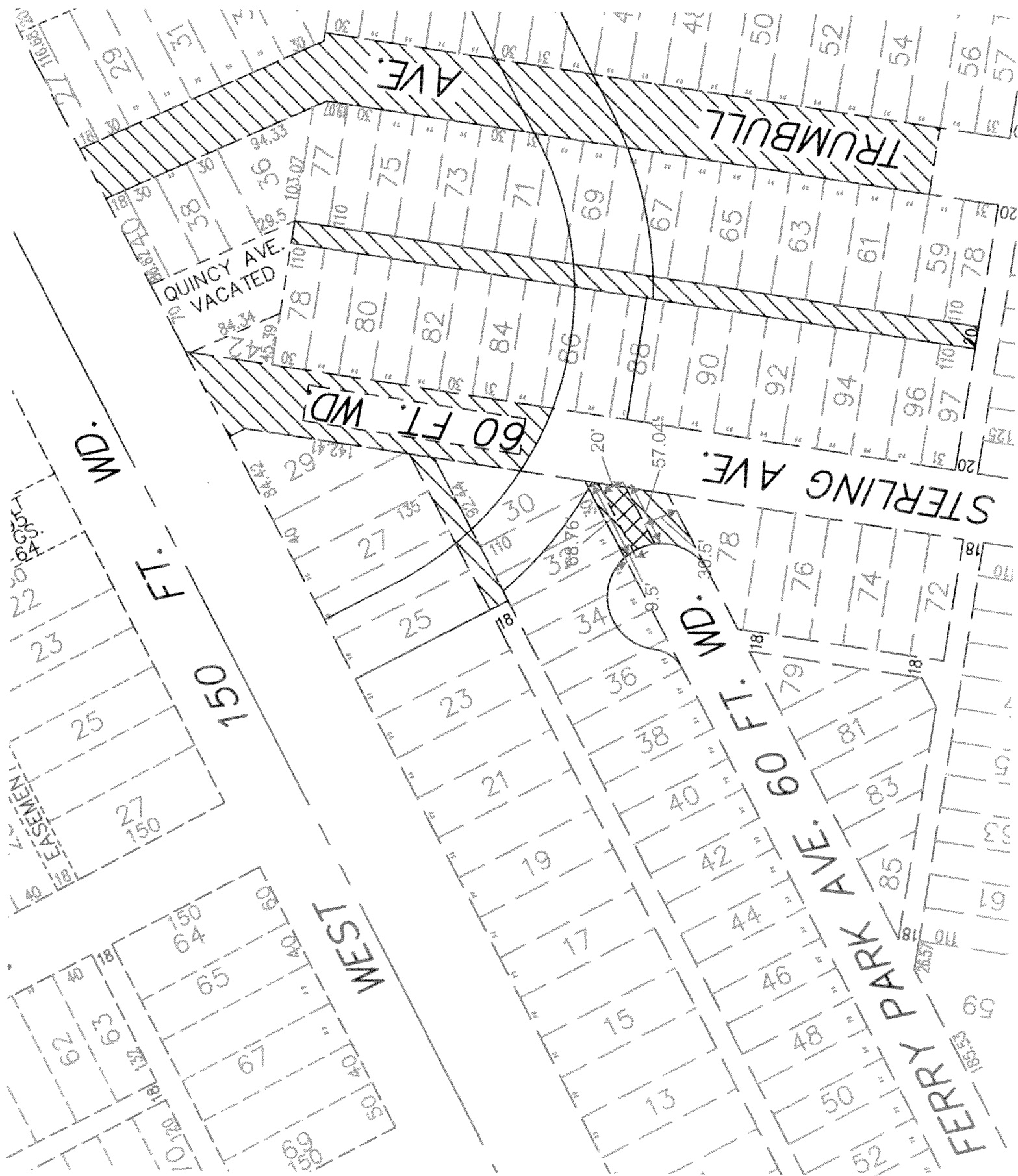
PROPOSED
 STREET
 DEDICATION

(FOR OFFICE USE ONLY)

REQUEST TO OUTRIGHT VACATE VARIOUS PUBLIC STREETS AND ALLEYS VARIOUS WIDTHS
 REQUEST CONVERSION TO EASTMENT A PORTION OF FERRY PARK AVE., 20 FT. WD.
 AND
 REQUEST FOR DEDICATION LINCOLN AVE. 100 FT. WD., FERRY PARK AVE., 30 FT. RADIUS AND W. MILWAUKEE AVE. VARIOUS WIDTHS
 IN THE AREA BOUND BY JOHN C. LODGE FWY., BALTIMORE, LINCOLN, HOLDEN AVE. AND W. GRAND BLVD.

CARTO 31 D

CITY OF DETROIT CITY ENGINEERING DEPARTMENT	SURVEY BUREAU
JOB NO.	01-01
DRAWG. NO.	X 930



[illegible]

1. *Chlorophyll a* and *Chlorophyll b* were determined in 90% methanol extracts of leaves by the method of Lichtenthaler and Whistler (1973). The absorbance of the extracts was measured at 663 nm and 646 nm. The concentrations of *Chlorophyll a* and *Chlorophyll b* were calculated using the following equations: $\text{Chlorophyll } a (\mu\text{g/g}) = 12.7 \times \text{Absorbance at } 663 \text{ nm}$ and $\text{Chlorophyll } b (\mu\text{g/g}) = 22.9 \times \text{Absorbance at } 646 \text{ nm}$. The total chlorophyll content was calculated as the sum of *Chlorophyll a* and *Chlorophyll b*.

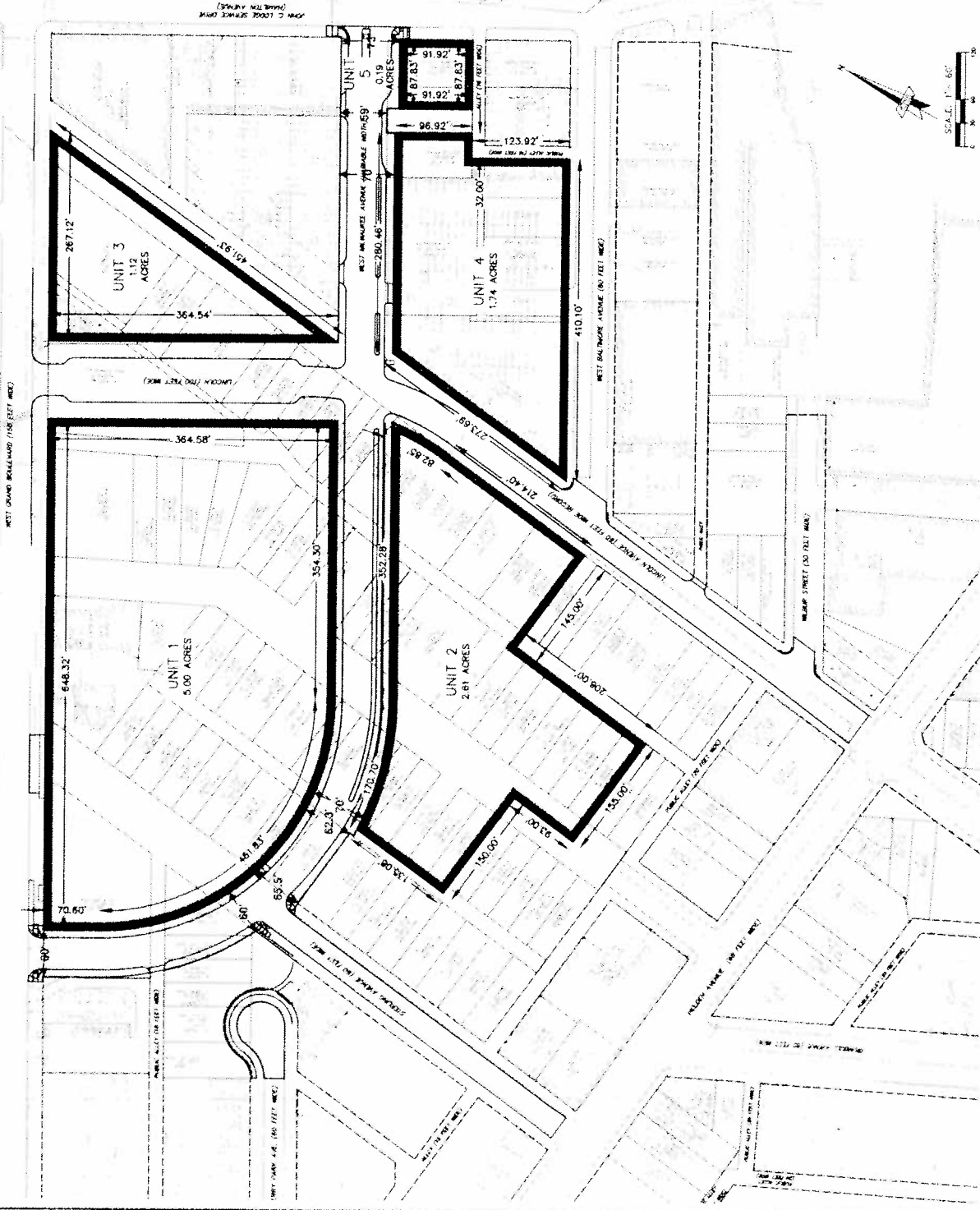
103. *See* *Shelton v. City of St. Louis*, 197 F.2d 101, 102 (8th Cir. 1955), *cert. denied*, 350 U.S. 961, 16 S.Ct. 283, 76-1 USTC ¶9500, 30 AFTR2d 56-6085 (S.Ct., 1956).

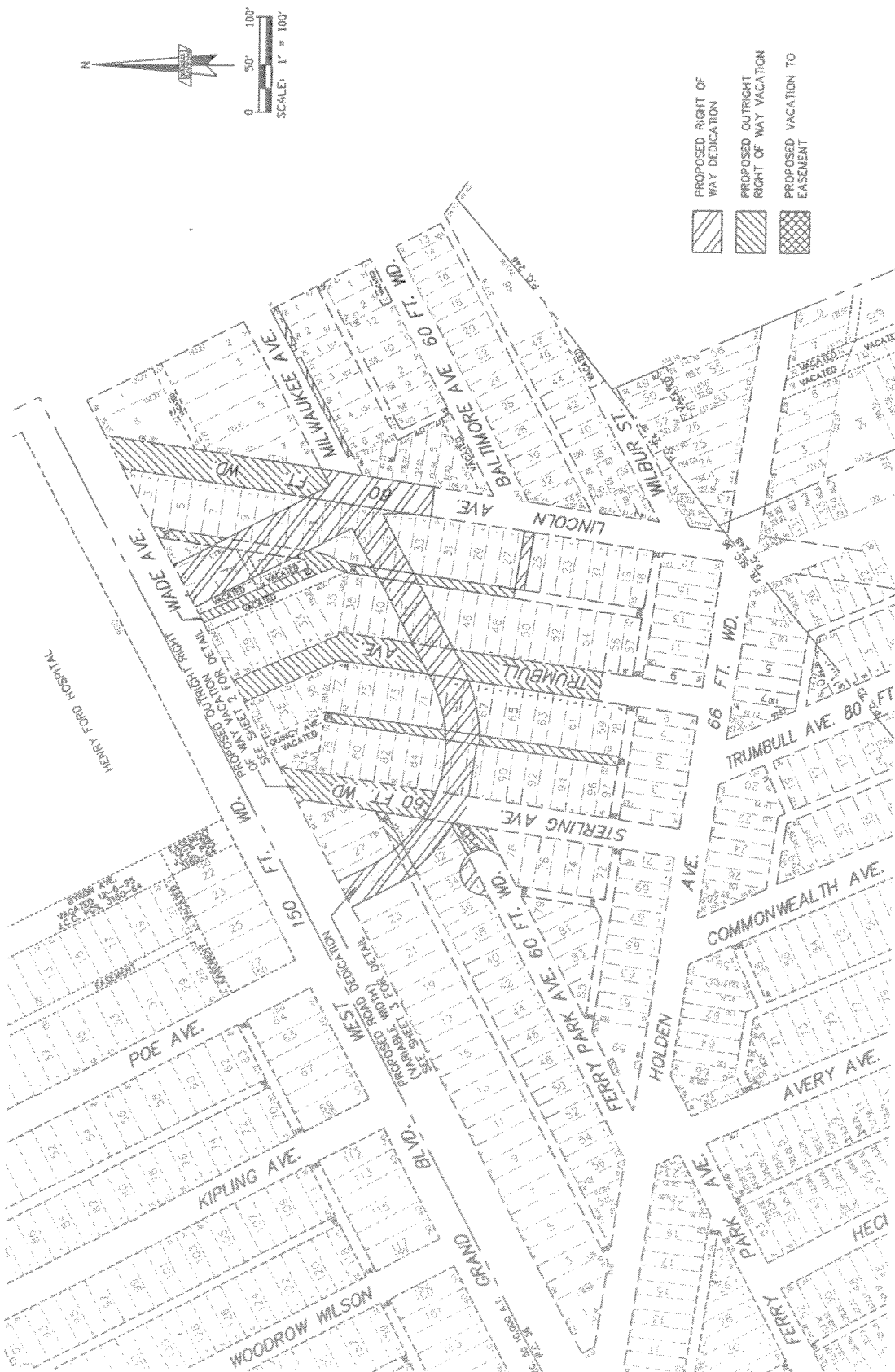
[illegible]

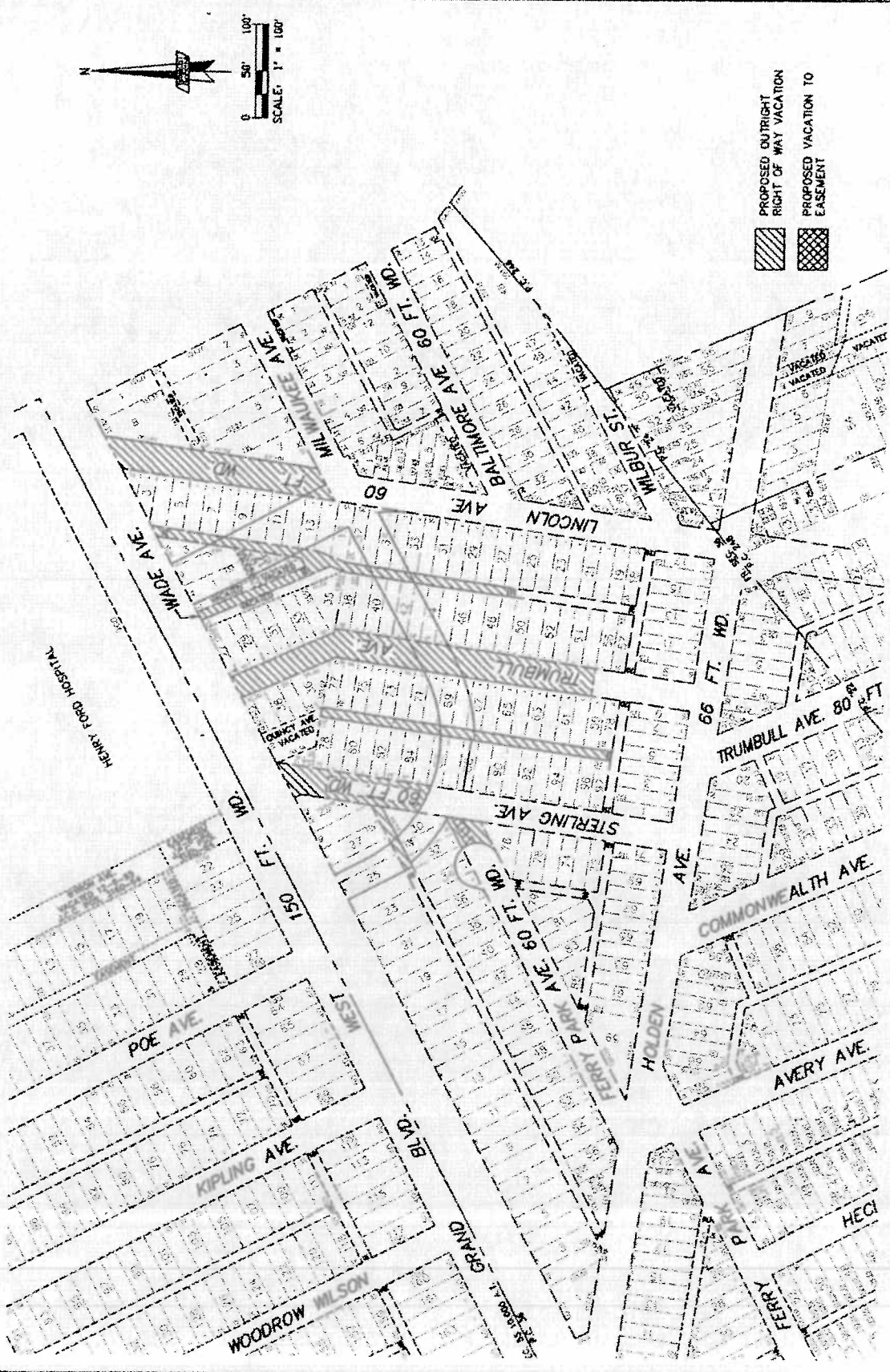
1997

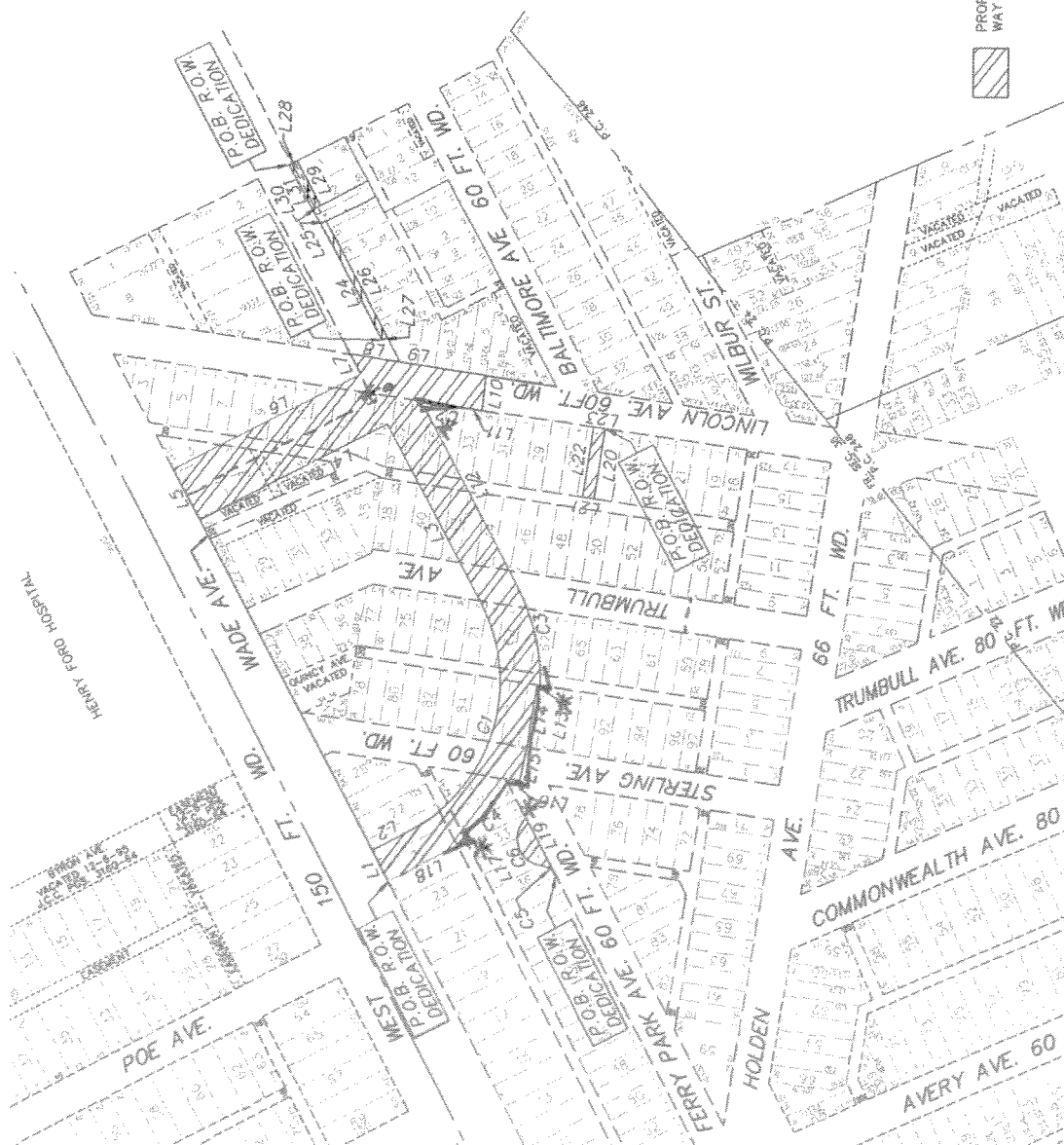
NOTES

THE DISTRICT OF COLUMBIA: DISTRICT OF COLUMBIA, D.C. 20004-1101
 DISTRICT OF COLUMBIA, D.C. 20004-1101
 DISTRICT OF COLUMBIA, D.C. 20004-1101









ROUTE SLIP



Date: August 5, 2016

NEIGHBORHOOD POLICING BUREAU-EAST

Deputy Chief U. Renee' Hall

To:

Precinct: THIRD PCT
Commander:
Captain: SZILAGY
Lieutenant:
Sergeant:
Police Officer
Other

Subject: PETITION

Route#: x930

- ☐ Proper Action
- ☒ See Special Instructions
- ☐ Recommendation
- ☐ Investigation & report
- ☐ Confer With Me
- ☐ Prepare Reply for Signature Of The

- ☐ Mayor
- ☐ Chief
- ☐ Deputy Chief

Date Due: 08/08/16

Special Instructions:

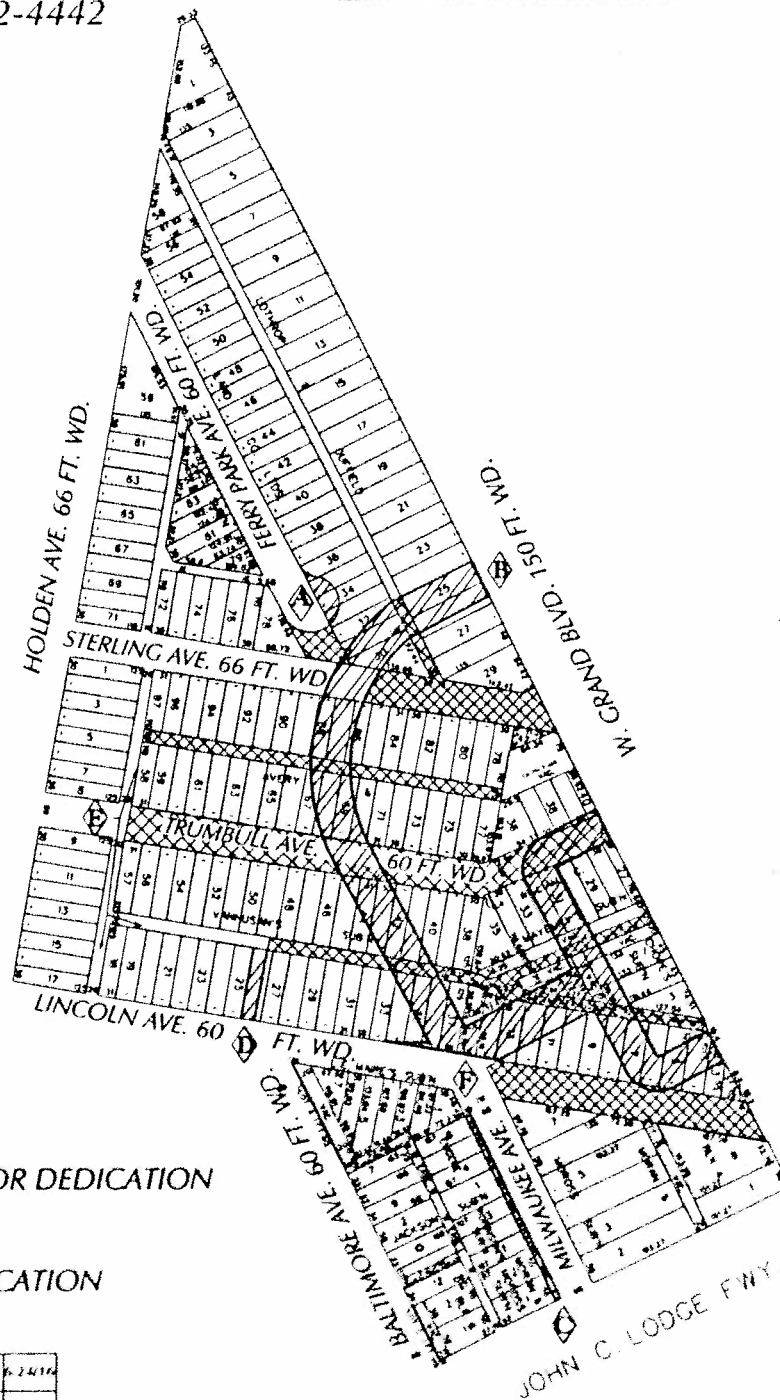
Review the proposed change in property notice and provide if in fact the proposed infrastructure change would affect DPD services (place an X on page 2, then email back to this office.

U. RENEE' HALL
Deputy Chief
Neighborhood Policing Bureau

Note: Please be mindful, all status reports or extension requests must be submitted prior to your assigned due date for approval by the C/O of Neighborhood Policing Bureau

PETITION NO. 930
 GIFFELS WEBSTER
 28 W. ADAMS, SUITE 1200
 DETROIT, MICHIGAN 48226
 C/O JOHN REDASH
 PHONE NO. 313 962-4442

"REVISED"



- REQUESTED FOR DEDICATION



- OUTRIGHT VACATION

F	REMOVED PUBLIC UTILITIES IN CERTAIN AREAS IN NEARBY BLOCKS	WLW	RSM	ASM	6-24-16
E	REMOVED PUBLIC UTILITIES IN CERTAIN AREAS IN NEARBY BLOCKS	WLW	ASM	ASM	6-24-16
D	REMOVED PUBLIC UTILITIES IN CERTAIN AREAS IN NEARBY BLOCKS	WLW	ASM	ASM	6-24-16
C	REMOVED PUBLIC UTILITIES IN CERTAIN AREAS IN NEARBY BLOCKS	WLW	ASM	ASM	6-24-16
B	REMOVED PUBLIC UTILITIES IN CERTAIN AREAS IN NEARBY BLOCKS	WLW	ASM	ASM	6-24-16
A	REMOVED PUBLIC UTILITIES IN CERTAIN AREAS IN NEARBY BLOCKS	WLW	ASM	ASM	6-24-16

(FOR OFFICE USE ONLY)

CARTO 31 D

REQUEST TO OUTRIGHT VACATE
 VARIOUS PUBLIC STREETS AND ALLEYS VARIOUS WIDTHS AND
 REQUEST FOR DEDICATION IN THE AREA BOUND BY
 JOHN C. LODGE FWY., BALTIMORE, LINCOLN, HOLDEN AVE.
 AND W. GRAND BLVD.

CITY OF DETROIT
 CITY ENGINEERING DEPARTMENT
 SURVEY BUREAU

JOB NO. 01-01

DRWG NO. X 930

DESCRIPTION	DRAWN	CHECKED	APPROVED	DATE
	WLW			
DATE	04-04-16	APPROVED		

TO: City Engineering Division, DPW
2 Woodward Ave., Suite 642
Detroit, Michigan 48226-3462
Survey Bureau: 313-224-3970

Petition: x930

The proposed change in property (referred to on the other side of this sheet) would affect our services as follows:

- ☐ Not Involved
- ☐ Involved; but asking you to hold action on this petition until further notice.
- ☐ Involved; but no objections to the property change.
- ☒ Involved; but no objections to the property change...provided as easement of the full width of the public right-of-way (street, alley or other public place) is reserved.
- ☒ Involved; the nature of our services and the estimated costs of removing and/or rerouting such services are:

DETROIT POLICE DEPT 3RD DIST
(Utility or City Department)

CHRISTOPHER GIBSON 4647
By

POLICE OFFICER CODE ENFORCEMENT
Title

8-9-2016
Date

313 596-1310, 596-1365
Area code - Telephone number

"REVISED"

City of Detroit

City Engineering Division, Department of Public Works Survey Bureau

NOTICE OF PROPOSED CHANGE IN PROPERTY

Date: 07/11/2016

Petition: x930

- | | |
|--|---|
| <input type="checkbox"/> AT&T Telecommunication | <input type="checkbox"/> Berm Use |
| <input type="checkbox"/> Comcast Television (CATV) | <input type="checkbox"/> Conversion to Easement |
| <input type="checkbox"/> Detroit Edison (DTE) | <input checked="" type="checkbox"/> Dedication |
| <input type="checkbox"/> Fire Department | <input type="checkbox"/> Encroachment |
| <input type="checkbox"/> Michcon (DTE) | <input type="checkbox"/> Temporary Closing |
| <input type="checkbox"/> Planning & Development Department | <input checked="" type="checkbox"/> Vacation |
| <input type="checkbox"/> Public Lighting Authority | |
| <input type="checkbox"/> Public Lighting Department | |
| <input checked="" type="checkbox"/> Police Department | |
| <input type="checkbox"/> Recreation Department | |
| <input type="checkbox"/> Solid Waste Division, DPW | |
| <input type="checkbox"/> Street Design Bureau, DPW | |
| <input type="checkbox"/> Street Maintenance Division, DPW | |
| <input type="checkbox"/> Traffic Engineering Division, DPW | |
| <input type="checkbox"/> Water and Sewerage Department | |
| <input type="checkbox"/> _____ | |

A petition drawing is attached. Property shown on the attached print is proposed to be changed as indicated. Kindly report (using the back of this sheet) the nature of your services, if any affected by the proposed change and the estimated costs of removing and rerouting such services (if necessary).

Please return one copy to City Engineering Division, DPW within two weeks of the submittal date. Retain one copy and print for you file.

Ron Brundidge, Director, Department of Public Works

By: Richard Doherty, CED DPW
City Engineer

August 9, 2016

To: City of Detroit City Engineering Division, Department of Public Works Survey Bureau

From: Police Officer Christopher Gibson, Third Precinct

Attachment to petition # X 930- NOTICE OF PROPOSED CHANGE IN PROPERTY

REQUESTED FOR DEDICATION and OUTRIGHT VACTION:

Based upon the nature of calls for service to the Detroit Police Department, The Third precinct would be affected by those street closers. They are routinely used as routes of travel by emergency service workers responding to calls for service throughout that area. Street closers in that area would cause a significate delay in response times.



Christopher Gibson

Police Officer 4649

Third Precinct