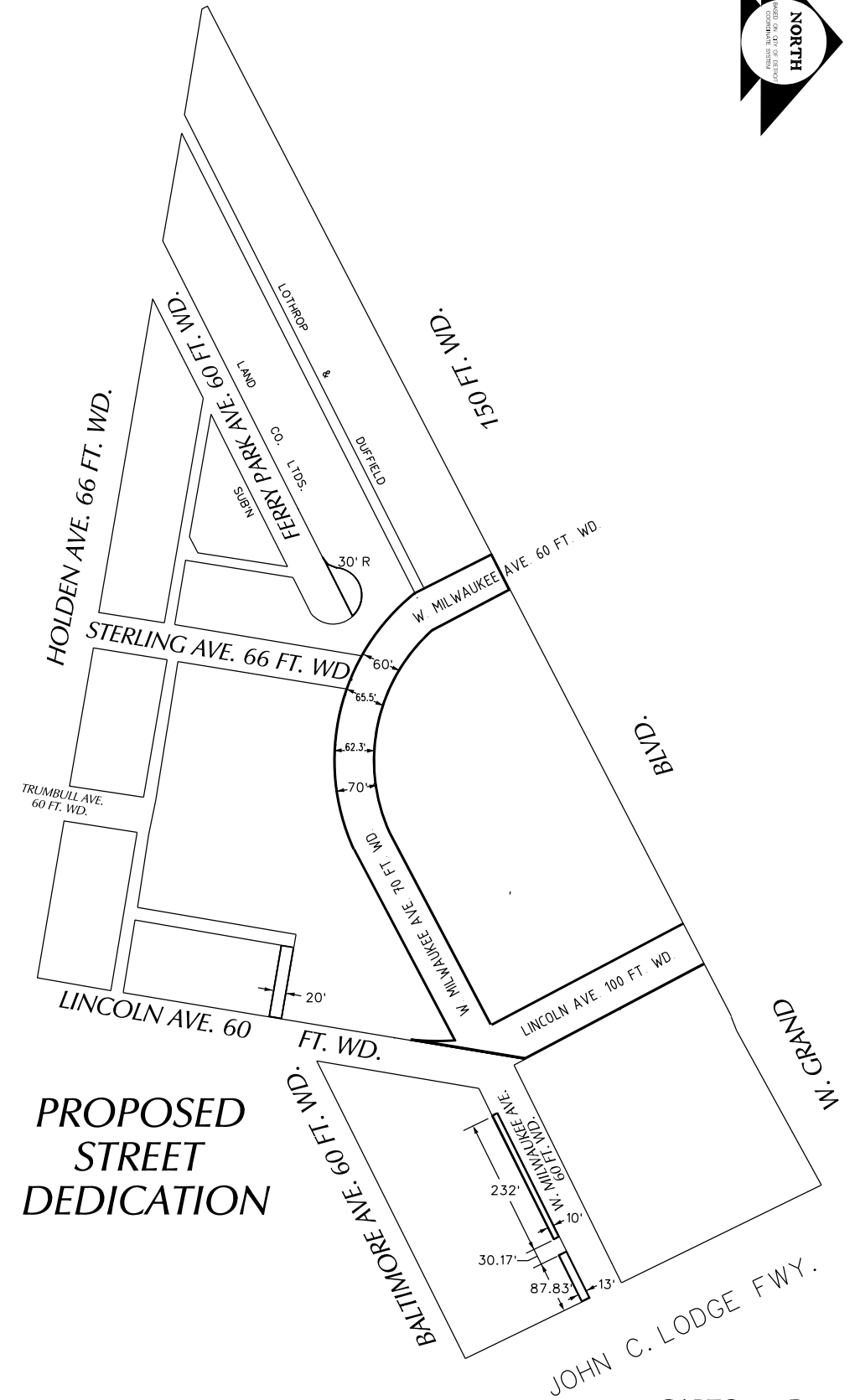
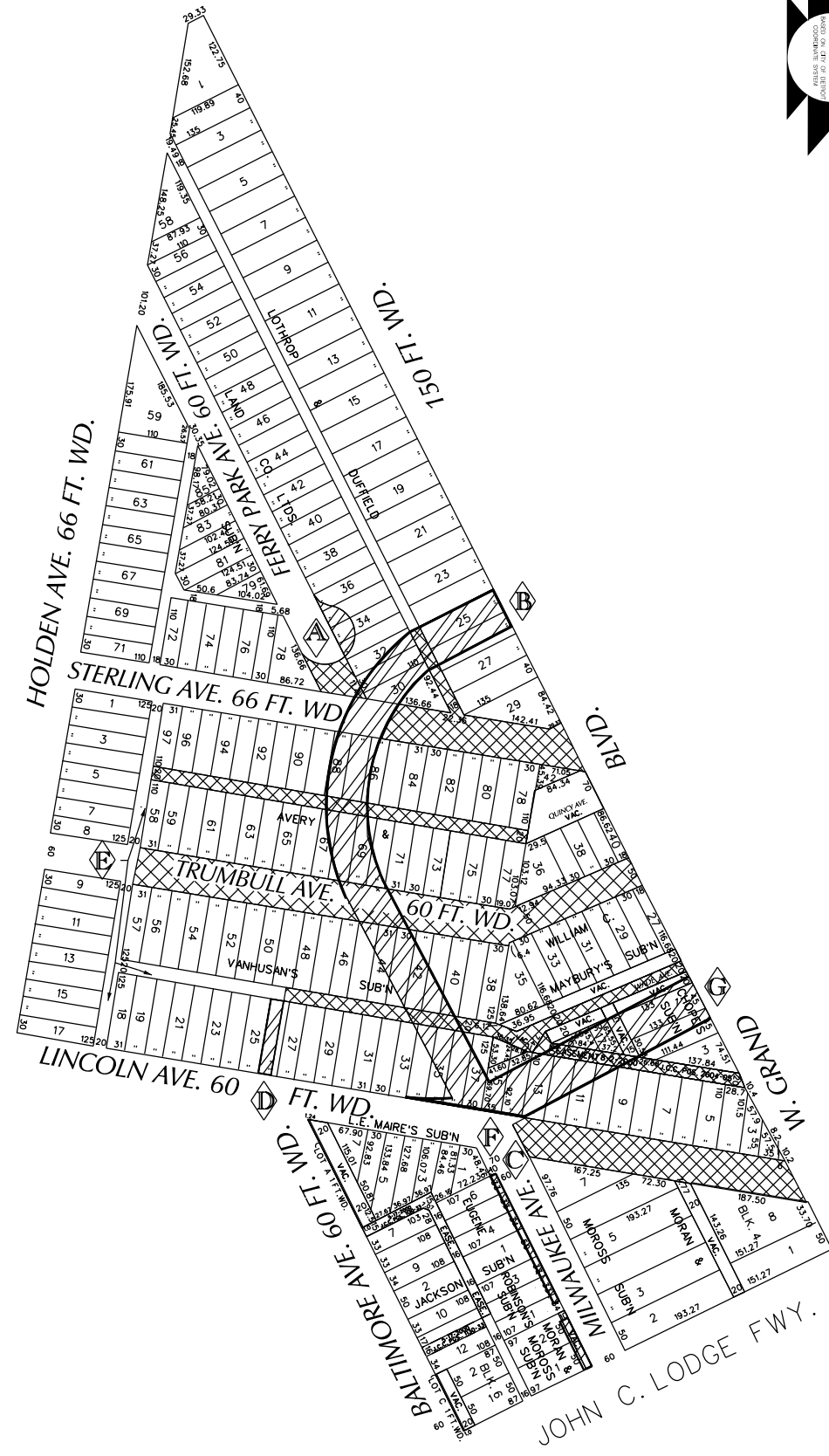


PETITION NO. 930
 GIFFELS WEBSTER
 28 W. ADAMS, SUITE 1200
 DETROIT, MICHIGAN 48226
 C/O JOHN REDASH
 PHONE NO. 313 962-4442

"REVISED"



- REQUESTED FOR DEDICATION
- OUTRIGHT VACATION

**PROPOSED
 STREET
 DEDICATION**

CARTO 31 D

**REQUEST TO OUTRIGHT VACATE VARIOUS PUBLIC STREETS AND ALLEYS VARIOUS WIDTHS
 AND**

**REQUEST FOR DEDICATION LINCOLN AVE. 100 FT. WD., FERRY PARK AVE., 30 FT. RADIUS AND W. MILWAUKEE AVE. VARIOUS WIDTHS
 IN THE AREA BOUND BY JOHN C. LODGE FWY., BALTIMORE, LINCOLN, HOLDEN AVE. AND W. GRAND BLVD.**

CITY OF DETROIT CITY ENGINEERING DEPARTMENT SURVEY BUREAU	
JOB NO.	01-01
DRWG. NO.	X 930

H	ADDING A DEDICATION R.O.W. ON MILWAUKEE AVE. TO 73 FT. WD. BETWEEN LINCOLN AND JOHN C. LODGE	WLW	KSM	KSM	1/30/17
G	INCREASE DEDICATION R.O.W. ON LINCOLN AVE. TO 100 FT. WD. BETWEEN MILWAUKEE AND W. CD. BLVD.	WLW	KSM	KSM	1/30/17
F	REDUCING PREVIOUS VACATION AREA BOUNDARY ON LINCOLN AVE.	WLW	KSM	KSM	6/24/16
E	REMOVING VACATION REQUEST ON PUBLIC ALLEYWAY	WLW	KSM	KSM	6/24/16
D	ADDING A PUBLIC ALLEYWAY (DEDICATION)	WLW	KSM	KSM	6/24/16
C	ADDING A NEW DEDICATION ON THE SOUTHSIDE OF MILWAUKEE AVE.	WLW	KSM	KSM	6/24/16
B	MILWAUKEE AVE. R.O.W. INCREASED TO 70 FT. WD. (DEDICATION)	WLW	KSM	KSM	6/24/16
A	ADDING A TURNAROUND (DEDICATION)	WLW	KSM	KSM	6/24/16
REVISIONS					
DESCRIPTION	DRWN	CHKD	APPD	DATE	
DRAWN BY	CHECKED				
WLW					
DATE	APPROVED				
04-04-16					

(FOR OFFICE USE ONLY)