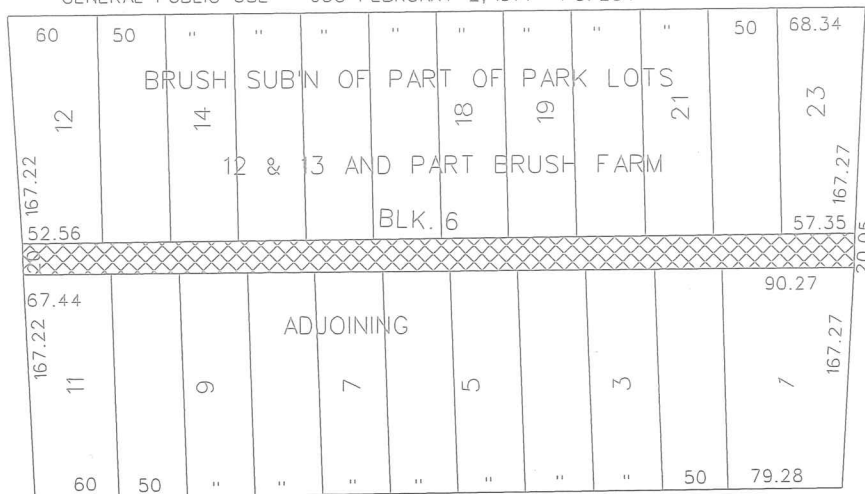


PETITION NO. 929
 GIFFELS WEBSTER
 28 W. ADAMS, SUITE 1200
 DETROIT, MICHIGAN 48226
 C/O JOHN REDASH
 PHONE NO. 313 962-4442

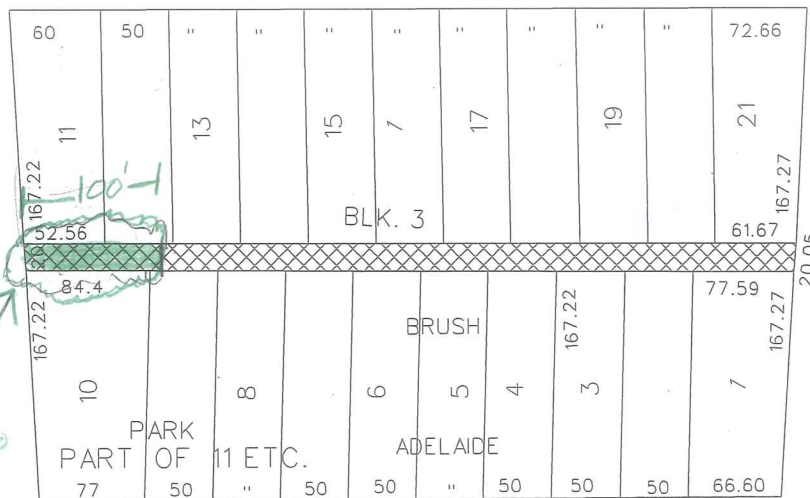


EDMUND PLACE 60 FT. WD.

CLOSED TO VEHICULAR TRAFFIC AND CONVERTED TO PEDESTRIAN MALL FOR
 GENERAL PUBLIC USE - JCC FEBRUARY 2, 1977 PG. 234



ALFRED ST. 60 FT. WD.

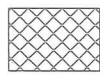


JOHN R. ST. 60 FT. WD.

BRUSH ST. 60 FT. WD.

DTE will need to maintain 100' ft. easement and the full width of the Alley See Attachment A

ADELAIDE ST. 60 FT. WD.



- OUTRIGHT VACATION

(FOR OFFICE USE ONLY)

CARTO 29 F

B					
A					
DESCRIPTION		DRWN	CHKD	APPD	DATE
REVISIONS					
DRAWN BY		CHECKED			
DATE		APPROVED			
01-21-16					

REQUEST TO OUTRIGHT VACATE
 THE EAST/WEST PUBLIC ALLEYS
 VARIOUS WIDTHS
 IN THE BLOCK BOUND BY
 BRUSH, ADELAIDE, JOHN R. ST.
 AND EDMUND PLACE

CITY OF DETROIT CITY ENGINEERING DEPARTMENT SURVEY BUREAU	
JOB NO.	01-01
DRWG. NO.	X 929



Date: March 15, 2016
To: City of Detroit
From: Abdelqwee M. Yaffai
Subject: Alley Vacation Request for Brush Park, Detroit

This is a reply to the Vacation Request to outright vacate the east/west public alleys various widths in the block bound by Brush, Adelaide, Join R. ST. and Edmund Place to enable the new construction project for Brush Park Development.

There are two alleys being requested to outright vacate:

1. North of Alfred between John R and Brush
2. South of Alfred between John R and Brush

The alley north of Alfred between John R and Brush can be fully vacated. The alley south of Alfred between John R and Brush will not be fully vacated. DTE Energy will need to maintain an easement that is the full width of the alley from the east side of (R.O.W.) line of John R and extending 100' ft. east to NB transformer #463.

1. **The system work required to vacate and relocate DTE equipment at Alley North of Alfred between John R and Brush will consist of following work:**

OH Work

- Remove (5) Poles
- Remove approximately 500' ft. secondary conductor
- Install (1) Cable Pole

System Conduit

- Conduit Rodding
- Remove (2) Netbank Column
- Duct Seal
- Miscellaneous associated work (i.e. permits, traffic control, manhole clean/abatement)

System Cable

- Remove approximately 400 ft. of 500CU cable
- Remove approximately 400 ft. of #2PL cable
- Install approximately 100 ft. of cable to new riser
- Remove (1) branch cable joint
- Install (1) straight joints
- Miscellaneous associated work (i.e. permits, traffic control, cable test)

The non-refundable customer cost for relocation work of the alley north of Alfred between John R and Brush is: \$148,927.69

2. The system work required to vacate and relocate DTE equipment at Alley south of Alfred between John R and Brush will consist of following work:

OH Work

- Remove (7) Poles
- Remove approximately 500' ft. secondary conductor

System Conduit

- Remove (2) Netbank Column
- Duct Seal
- Miscellaneous associated work (i.e. permits, traffic control, manhole clean/abatement)

System Cable

- Remove approximately 1,000 ft. of 500CU cable
- Remove approximately 400 ft. of #2PL cable
- Remove (1) branch cable joint
- Install (1) straight joints
- Miscellaneous associated work (i.e. permits, traffic control, cable test)

The non-refundable customer cost for relocation work of the alley south of Alfred between John R and Brush is: \$113,973.86

DTE Energy will need to maintain an easement that is the full width of the alley from the east side of (R.O.W.) line of John R and extending 100' ft. east to NB transformer #463.

Lead Time

The work described above would require approximately six months to be completed. However, Schedule Adherence would have to evaluate crew availability to determine a more accurate construction duration time. The time duration for design and construction will begin after a written go-ahead and payment has been received.

The information provided in this memo is valid for six months. If you have any questions, please contact me on 313-235-5172.

cc: A. Balch
K. Simone

Engineer: *A. Yaffari*

Date: *3/15/16*

Approved By: *A. M. Balch*

Date: *3/15/16*