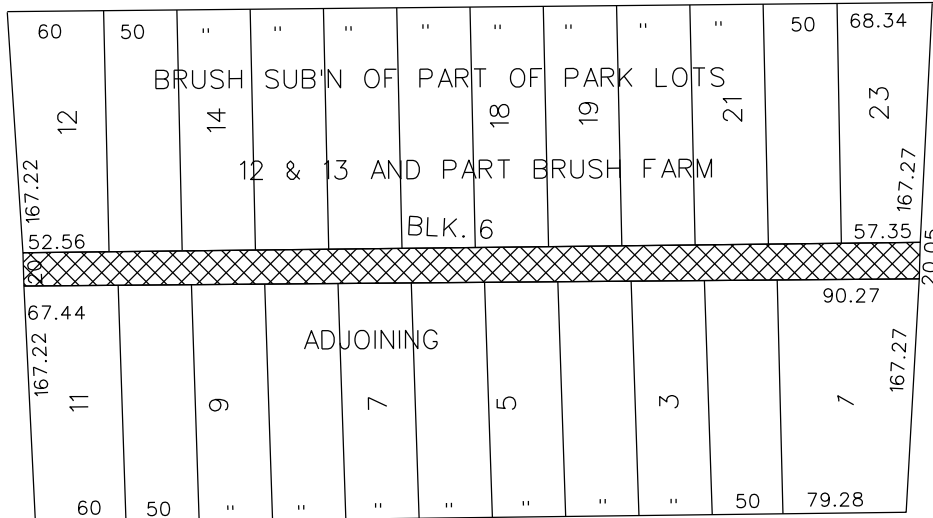


PETITION NO. 929
 GIFFELS WEBSTER
 28 W. ADAMS, SUITE 1200
 DETROIT, MICHIGAN 48226
 C/O JOHN REDASH
 PHONE NO. 313 962-4442



EDMUND PLACE 60 FT. WD.

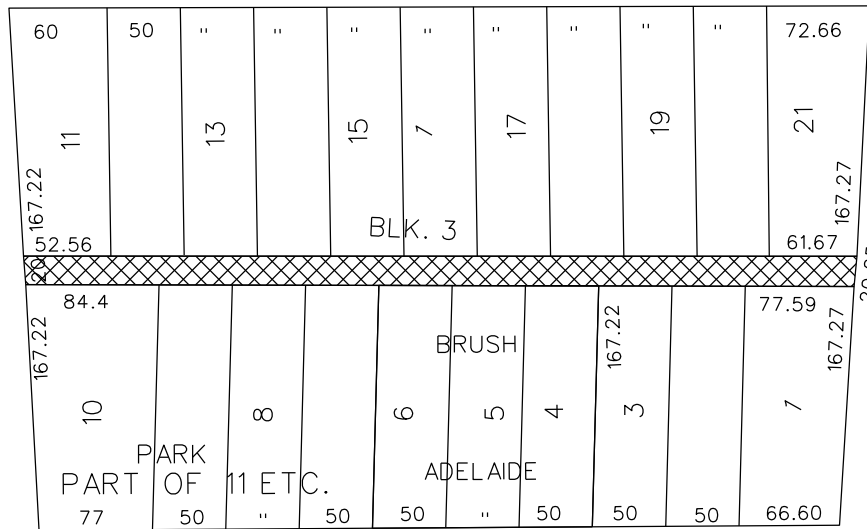
CLOSED TO VEHICULAR TRAFFIC AND CONVERTED TO PEDESTRIAN MALL FOR
 GENERAL PUBLIC USE - JCC FEBRUARY 2, 1977 PG. 234



JOHN R. ST. 60 FT. WD.

BRUSH ST. 60 FT. WD.

ALFRED ST. 60 FT. WD.



ADELAIDE ST. 60 FT. WD.



- OUTRIGHT VACATION

(FOR OFFICE USE ONLY)

CARTO 29 F

| | | | | | |
|-------------|--|----------|------|------|------|
| B | | | | | |
| A | | | | | |
| DESCRIPTION | | DRWN | CHKD | APPD | DATE |
| REVISIONS | | | | | |
| DRAWN BY | | CHECKED | | | |
| DATE | | APPROVED | | | |
| 01-21-16 | | | | | |

REQUEST TO OUTRIGHT VACATE
 THE EAST/WEST PUBLIC ALLEYS
 VARIOUS WIDTHS
 IN THE BLOCK BOUND BY
 BRUSH, ADELAIDE, JOHN R. ST.
 AND EDMUND PLACE

| | |
|---|-------|
| CITY OF DETROIT CITY ENGINEERING DEPARTMENT SURVEY BUREAU | |
| JOB NO. | 01-01 |
| DRWG. NO. | X 929 |