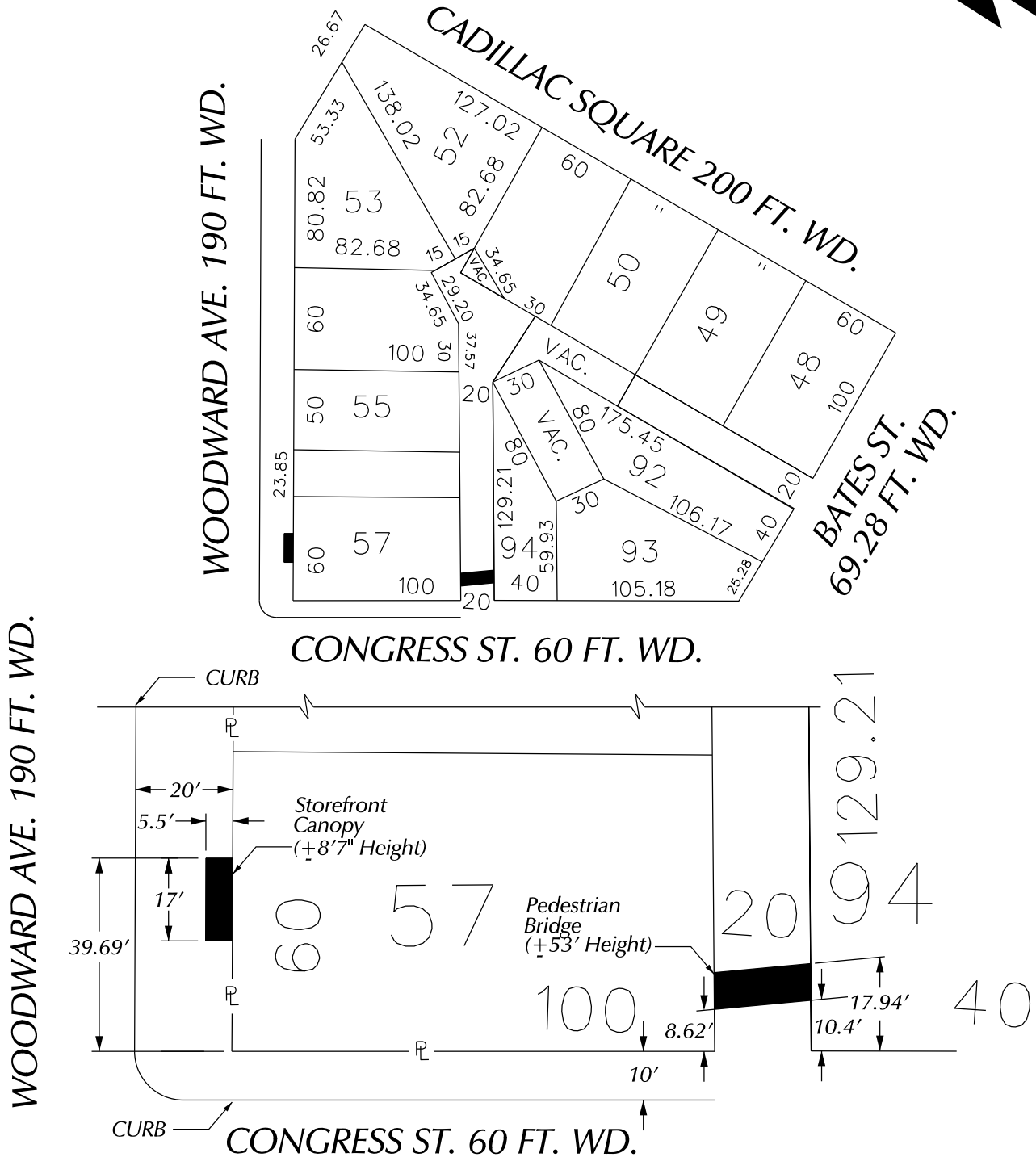


PETITION NO. 928
 GIFFELS WEBSTER
 28 W. ADAMS, SUITE 1200
 DETROIT, MICHIGAN 48226
 C/O TERENCE THOMAS
 PHONE NO. 313 962-4442



 - REQUEST ENCROACHMENT
 (With Storefront Canopy
 and Pedestrian Bridge)

(FOR OFFICE USE ONLY)

CARTO 28 F

B						REQUEST ENCROACHMENT INTO WOODWARD AT 600 WOODWARD AVE. (With Storefront Canopy) AND A PORTION OF THE NORTH/SOUTH ALLEY (With Pedestrian Bridge)	CITY OF DETROIT CITY ENGINEERING DEPARTMENT SURVEY BUREAU	
A					JOB NO. 01-01			
DESCRIPTION		DRWN	CHKD	APPD	DATE			DRWG. NO. X 928
DRAWN BY		CHECKED						
DATE		APPROVED						