

City of Detroit
Inter-Departmental Communication

TO: Richard Doherty, City Engineer
City Engineering/Department of Public Works

FROM: Debra Singleton, Engineer
Detroit Water and Sewerage Department

DATE: September 15, 2017

RE: Petition No. 1358
Requested Encroachment Into Russell At 2727 Russell (With Outdoor Seating)

We have reviewed the above Petition received by this office. With regard to DWSD's interests, our comments are as follows:

- DWSD has no objection to the requested encroachment provided that the attached Provisions for Encroachment are strictly followed.

If you have any questions, please call me at (313) 267-8309 or Mohammed Fa Siddique at (313)-964-9245.

Sincerely,

A handwritten signature in black ink, appearing to read 'Debra Singleton' with a stylized flourish.

Debra Singleton
Engineer
Permits

DS/MS/gl

Attachments

CC: Mohamad Farhat, CSF

Michael Duggan, Mayor

City of Detroit
City Engineering Division, Department of Public Works
Survey Bureau

NOTICE OF PROPOSED CHANGE IN PROPERTY

Date: 01/25/2017

Petition: x1358

- | | |
|--|--|
| <input type="checkbox"/> AT&T Telecommunication | <input type="checkbox"/> Berm Use |
| <input type="checkbox"/> Comcast Television (CATV) | <input type="checkbox"/> Conversion to Easement |
| <input type="checkbox"/> Detroit Edison (DTE) | <input type="checkbox"/> Dedication |
| <input type="checkbox"/> Fire Department | <input checked="" type="checkbox"/> Encroachment |
| <input type="checkbox"/> Great Lakes Water Authority | <input type="checkbox"/> Temporary Closing |
| <input type="checkbox"/> Michcon (DTE) | <input type="checkbox"/> Vacation |
| <input type="checkbox"/> Planning & Development Department | |
| <input type="checkbox"/> Public Lighting Authority | |
| <input type="checkbox"/> Public Lighting Department | |
| <input type="checkbox"/> Police Department | |
| <input type="checkbox"/> Solid Waste Division, DPW | |
| <input type="checkbox"/> Street Design Bureau, DPW | |
| <input type="checkbox"/> Street Maintenance Division, DPW | |
| <input type="checkbox"/> Traffic Engineering Division, DPW | |
| <input type="checkbox"/> Water and Sewerage Department | |
| <input type="checkbox"/> _____ | |

A petition drawing is attached. Property shown on the attached print is proposed to be changed as indicated. Kindly report (using the back of this sheet) the nature of your services, if any affected by the proposed change and the estimated costs of removing and rerouting such services (if necessary).

Please return one copy to City Engineering Division, DPW within two weeks of the submittal date. Retain one copy and print for you file.

Ron Brundidge, Director, Department of Public Works

By: Richard Doherty, CED DPW
City Engineer

**TO: City Engineering Division, DPW
2 Woodward Ave., Suite 642
Detroit, Michigan 48226-3462
Survey Bureau: 313-224-3970**

Petition: x1358

The proposed change in property (referred to on the other side of this sheet) would affect our services as follows:

- Not Involved

- Involved; but asking you to hold action on this petition until further notice.

- Involved; but no objections to the property change.

- Involved; but no objections to the property change...provided as easement of the full width of the public right-of-way (street, alley or other public place) is reserved.

- Involved; the nature of our services and the estimated costs of removing and/or rerouting such services are:

(Utility or City Department)

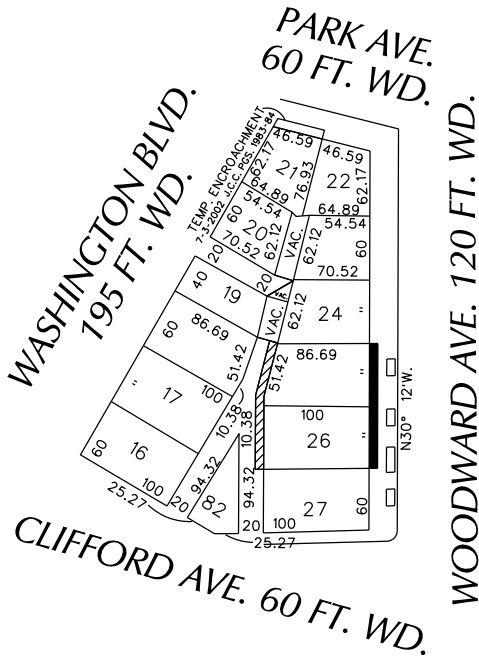
By

Title

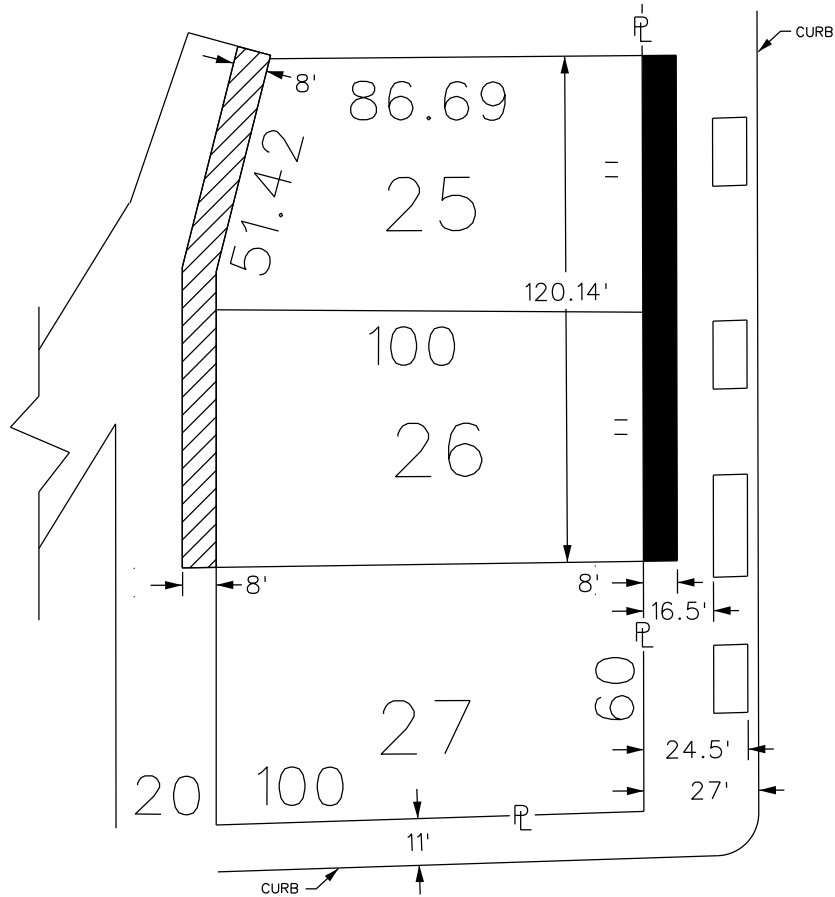
Date

Area code – Telephone number

PETITION NO. 1358
 GIFFELS WEBSTER
 28 W. ADAMS, SUITE 1200
 DETROIT, MICHIGAN 48226
 C/O DEIRDRE CLEIN
 PHONE NO. 313 962-4442

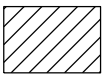


WOODWARD AVE. 120 FT. WD.



WOODWARD AVE. 120 FT. WD.

CLIFFORD AVE. 60 FT. WD.



- REQUEST ENCROACHMENT
 (With Canopies)



- REQUEST ENCROACHMENT
 (With Seasonal Outdoor Seating
 and Canopies)

(FOR OFFICE USE ONLY)

CARTO 28 B

B					
A					
DESCRIPTION	DRWN	CHKD	APPD	DATE	
REVISIONS					
DRAWN BY	WLW	CHECKED			
DATE	01-25-17	APPROVED			

REQUEST ENCROACHMENT
 INTO WOODWARD
 AT 1515 - 1525 WOODWARD AVE.
 (With Seasonal Outdoor Seating
 and Canopies)

CITY OF DETROIT CITY ENGINEERING DEPARTMENT	
SURVEY BUREAU	
JOB NO.	01-01
DRWG. NO.	X 1358

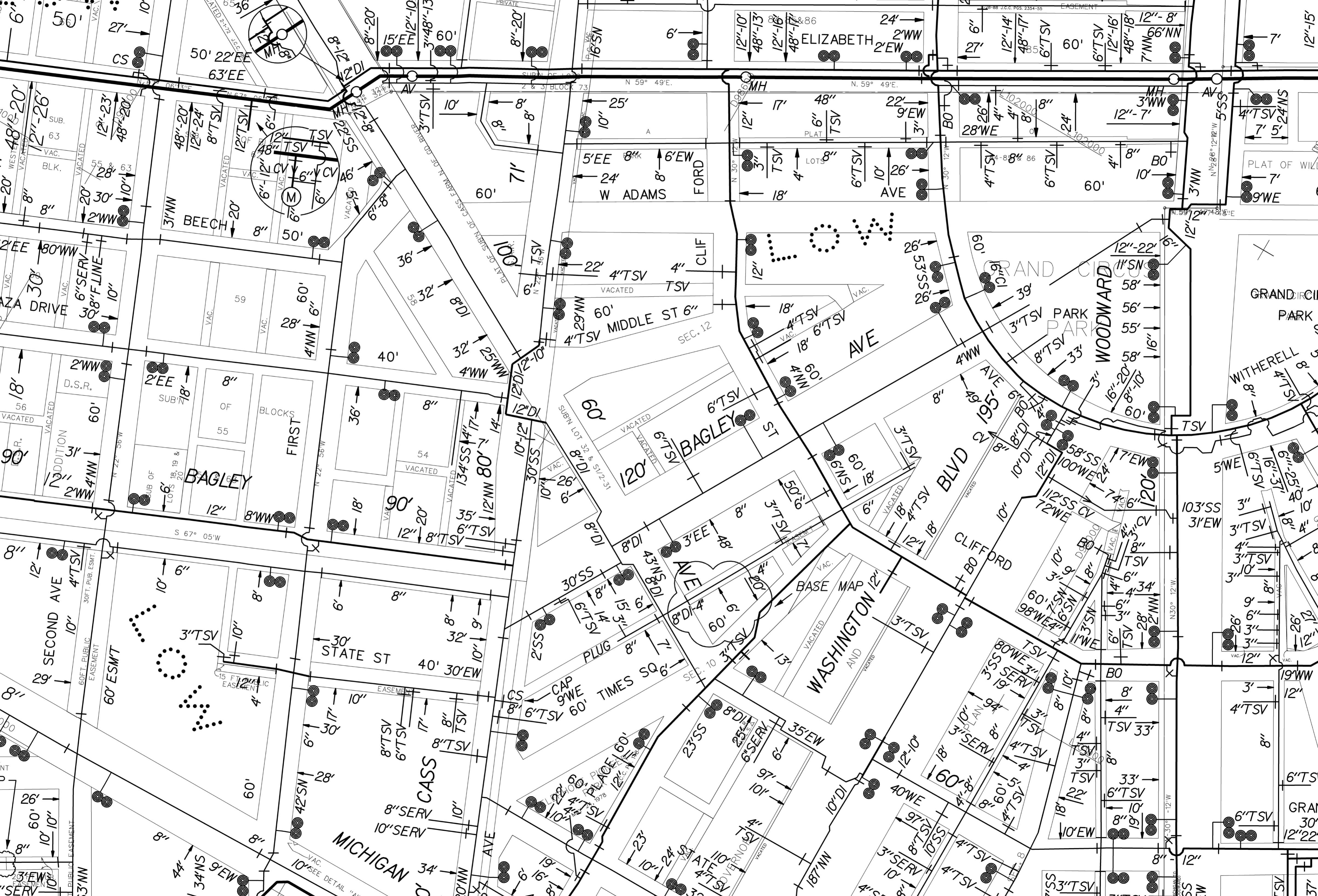
PROVISIONS FOR ENCROACHMENT For Petition 1358

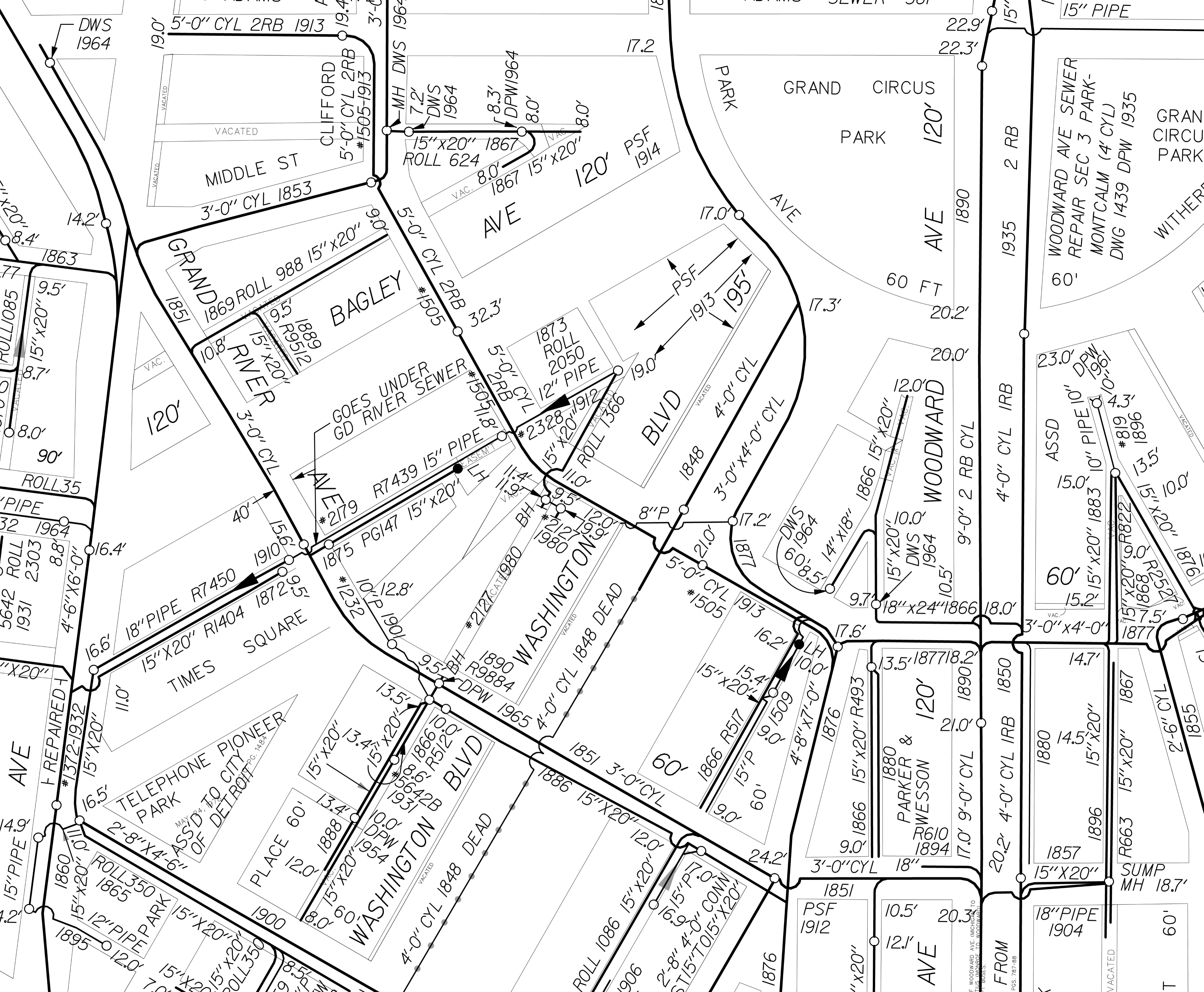
Detroit Water and Sewerage (DWSD) agree to the proposed encroachment subject to the fulfilling of the following provisions:

1. By approval of this petition the (DWSD) does not waive any of its rights to its facilities located in the right of way, and at all time, DWSD, its agents or employees, shall have the right to enter upon the right of way to maintain, repair, alter, service, inspect, or install its facilities. All costs incident to the damaging, dismantling, demolishing, removal and replacement of structures or other improvements herein permitted and incurred in gaining access to DWSD's facilities for maintenance, repairing, alteration, servicing or inspection caused by the encroachment shall be borne by the petitioner. All costs associated with gaining access to DWSD's facilities, which could normally be expected had the petitioner not encroached into the right of way shall be borne by DWSD.
2. All construction performed under this petition shall not be commenced until after five (5) days written notice to DWSD. Seventy-two (72) hours notice shall also be provided in accordance with P.A. 53 1974, as amended, utilizing the MISS DIG one call system.
3. Construction under this petition is subject to inspection and approval by DWSD forces. The cost of such inspection shall, at the discretion of DWSD, be borne by the petitioner.
4. If DWSD facilities located within the right of way shall break or be damaged as the result of any action on the part of the petitioner, then in such event the petitioner agrees to be liable for all costs incident to the repair, replacement or relocation of such broken or damaged DWSD facilities.
5. The petitioner shall hold DWSD harmless for any damage to the encroaching device constructed or installed under this petition, which may be caused by the failure of DWSD's facilities.

Detroit Water & Sewerage Department (DWSD) Notes:

- Our records indicate that there are water mains and sewers which are located in the vicinity of the proposed project limits.
- It is DWSD's requirement that any proposed utility crossing DWSD water mains or sewers perpendicularly must maintain a minimum of 18 inches vertical clearance. Also any proposed utility running adjacent to DWSD water mains and sewers must maintain a minimum of 5 feet lateral clearance including any conduit and/or manholes walls. No utility is allowed to run along the top of the water main or sewer.
- There are possibilities of several water and sewer service lines crossing in the vicinity of proposed work, field verify their location and depth to maintain our required clearance.
- Detroit Water and Sewerage Department (DWSD) prohibits the use of heavy construction equipment (bulldozers, backhoes, extremely large rollers, etc.) and or storage of building material directly over or near our mains or sewers. DWSD also prohibits the use of cranes and balls or hydraulic rams for pavement removal where the DWSD facilities are involved. If the water main or sewer facilities are broken or damaged as a result of any action on the part of the contractor, then the contractor shall be liable for all costs incidental to the repair of such broken or damaged water main/sewer facilities and appurtenances. The contractor shall waive all claims for damages under such circumstances.
- For any proposed work that involves DWSD utilities (water mains and/or sewers), an approval and a permit is required from DWSD before the commencement of work.





DWS 1964

5'-0" CYL 2RB 1913

MIDDLE ST

3'-0" CYL 1853

CLIFFORD
5'-0" CYL 2RB
#1505-1913

MH DWS 1964

15" x 20" 1867
ROLL 624

8.3' DPW 1964

8.0' 15" x 20"

8.0'

120'

PSF 1914

PARK

GRAND CIRCUS

PARK

120'

AVE

1890

15" PIPE

WOODWARD AVE SEWER
REPAIR SEC 3 PARK-
MONTCALM (4' CYL)
DWG 1439 DPW 1935

GRAN
CIRCUS
PARK

WITHER

ROLL 1085

15" x 20" 9.5'

8.7'

8.0'

90'

ROLL 35

PIPE

32 1964

8.8'

4'-6" x 6'-0"

16.4'

15" x 20"

11.0'

16.5'

15" x 20"

18" PIPE R7450

15" x 20" R1404

1872.9.5'

1910.0'

15.9'

40'

15.0'

15" x 20"

15.0'

15" x 20"

15" x 20"

GRAND RIVER

3'-0" CYL

15" x 20"

10.8'

15" x 20"

9.5'

R9512

1889

1851

1869 ROLL 988

15" x 20"

15" x 20"

15" x 20"

15" x 20"

15" x 20"

15" x 20"

15" x 20"

15" x 20"

15" x 20"

15" x 20"

BAGLEY

15" x 20"

15" x 20"

15" x 20"

15" x 20"

15" x 20"

15" x 20"

15" x 20"

15" x 20"

15" x 20"

15" x 20"

15" x 20"

15" x 20"

15" x 20"

15" x 20"

15" x 20"

15" x 20"

15" x 20"

15" x 20"

15" x 20"

15" x 20"

15" x 20"

15" x 20"

15" x 20"

15" x 20"

15" x 20"

15" x 20"

15" x 20"

15" x 20"

15" x 20"

15" x 20"

15" x 20"

15" x 20"

15" x 20"

15" x 20"

15" x 20"

15" x 20"

15" x 20"

15" x 20"

15" x 20"

15" x 20"

15" x 20"

15" x 20"

15" x 20"

15" x 20"

15" x 20"

15" x 20"

15" x 20"

15" x 20"

15" x 20"

15" x 20"

15" x 20"

15" x 20"

15" x 20"

15" x 20"

15" x 20"

15" x 20"

15" x 20"

15" x 20"

15" x 20"

15" x 20"

15" x 20"

15" x 20"

15" x 20"

15" x 20"

15" x 20"

15" x 20"

15" x 20"

15" x 20"

15" x 20"

15" x 20"

15" x 20"

15" x 20"

15" x 20"

15" x 20"

15" x 20"

15" x 20"

15" x 20"

15" x 20"

15" x 20"

15" x 20"

15" x 20"

15" x 20"

15" x 20"

15" x 20"

15" x 20"

15" x 20"

15" x 20"

15" x 20"

15" x 20"

15" x 20"

15" x 20"

15" x 20"

15" x 20"

15" x 20"

15" x 20"

15" x 20"

15" x 20"

15" x 20"

15" x 20"

15" x 20"

15" x 20"

15" x 20"

15" x 20"

15" x 20"

15" x 20"

15" x 20"

15" x 20"

15" x 20"

15" x 20"

15" x 20"

15" x 20"

15" x 20"

15" x 20"

15" x 20"

15" x 20"

15" x 20"

15" x 20"

15" x 20"

15" x 20"

15" x 20"

15" x 20"

15" x 20"

15" x 20"

15" x 20"

15" x 20"

15" x 20"

15" x 20"

15" x 20"

15" x 20"

15" x 20"

15" x 20"

15" x 20"

15" x 20"

15" x 20"

15" x 20"

15" x 20"

15" x 20"

15" x 20"

15" x 20"

15" x 20"

15" x 20"

15" x 20"

15" x 20"

15" x 20"

15" x 20"

15" x 20"

15" x 20"

15" x 20"

15" x 20"

15" x 20"

15" x 20"

15" x 20"

15" x 20"

15" x 20"

15" x 20"

15" x 20"

15" x 20"

15" x 20"

15" x 20"

15" x 20"

15" x 20"

15" x 20"

15" x 20"

15" x 20"

15" x 20"

15" x 20"

15" x 20"

15" x 20"

15" x 20"

15" x 20"

15" x 20"

15" x 20"

15" x 20"

15" x 20"

15" x 20"

15" x 20"

15" x 20"

15" x 20"

15" x 20"

15" x 20"

15" x 20"

15" x 20"

15" x 20"

15" x 20"

15" x 20"

15" x 20"

15" x 20"

15" x 20"

15" x 20"

15" x 20"

15" x 20"

15" x 20"

15" x 20"

15" x 20"

15" x 20"

15" x 20"

15" x 20"

15" x 20"

15" x 20"

15" x 20"

15" x 20"

15" x 20"

15" x 20"

15" x 20"

15" x 20"

15" x 20"

15" x 20"

15" x 20"

15" x 20"

15" x 20"

15" x 20"

15" x 20"

15" x 20"

15" x 20"

15" x 20"

15" x 20"

15" x 20"

15" x 20"

15" x 20"

15" x 20"

15" x 20"

15" x 20"

15" x 20"

15" x 20"

15" x 20"

15" x 20"

15" x 20"

15" x 20"

<