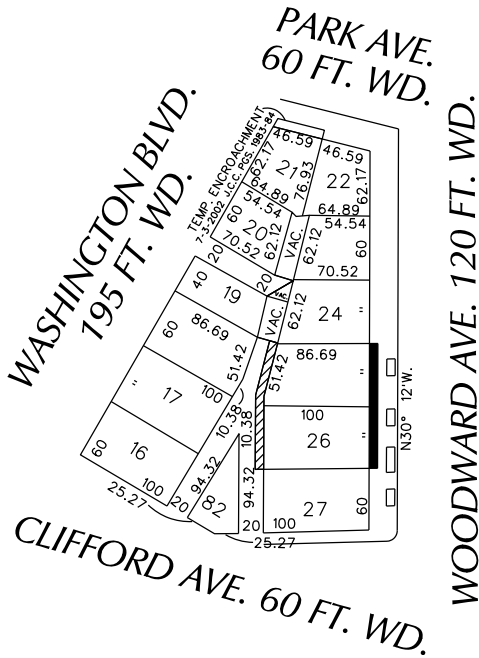
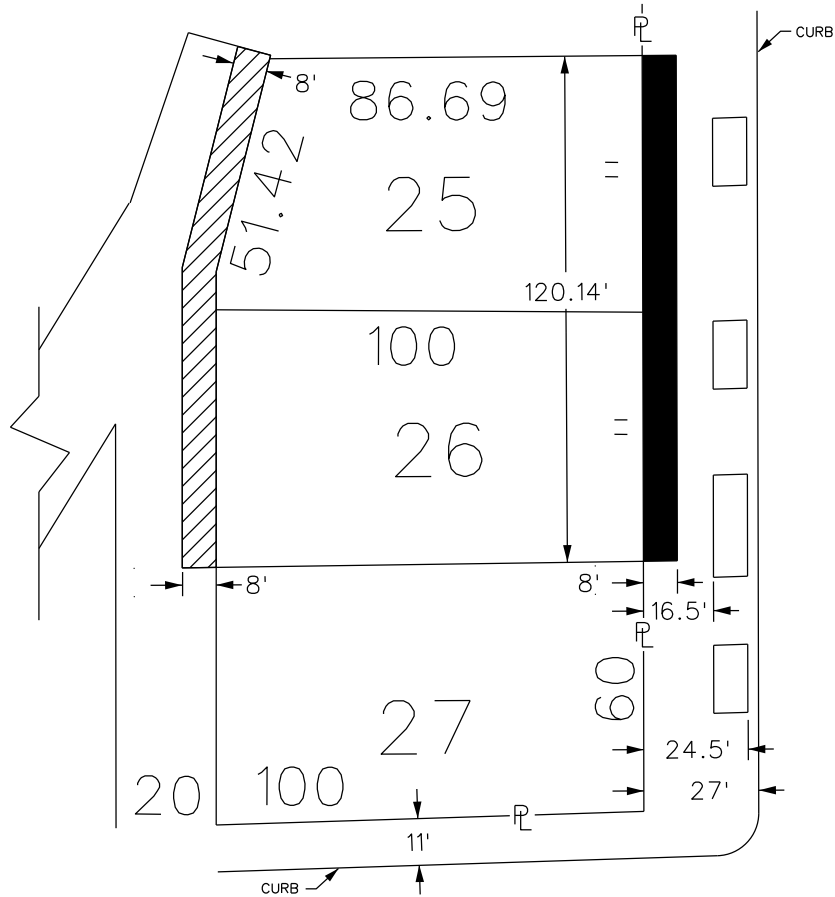


PETITION NO. 1358
 GIFFELS WEBSTER
 28 W. ADAMS, SUITE 1200
 DETROIT, MICHIGAN 48226
 C/O DEIRDRE CLEIN
 PHONE NO. 313 962-4442

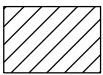


WOODWARD AVE. 120 FT. WD.



WOODWARD AVE. 120 FT. WD.

CLIFFORD AVE. 60 FT. WD.



- REQUEST ENCROACHMENT
 (With Canopies)



- REQUEST ENCROACHMENT
 (With Seasonal Outdoor Seating
 and Canopies)

(FOR OFFICE USE ONLY)

CARTO 28 B

B					
A					
DESCRIPTION	DRWN	CHKD	APPD	DATE	
REVISIONS					
DRAWN BY	WLW	CHECKED			
DATE	01-25-17	APPROVED			

REQUEST ENCROACHMENT
 INTO WOODWARD
 AT 1515 - 1525 WOODWARD AVE.
 (With Seasonal Outdoor Seating
 and Canopies)

CITY OF DETROIT CITY ENGINEERING DEPARTMENT	
SURVEY BUREAU	
JOB NO.	01-01
DRWG. NO.	X 1358