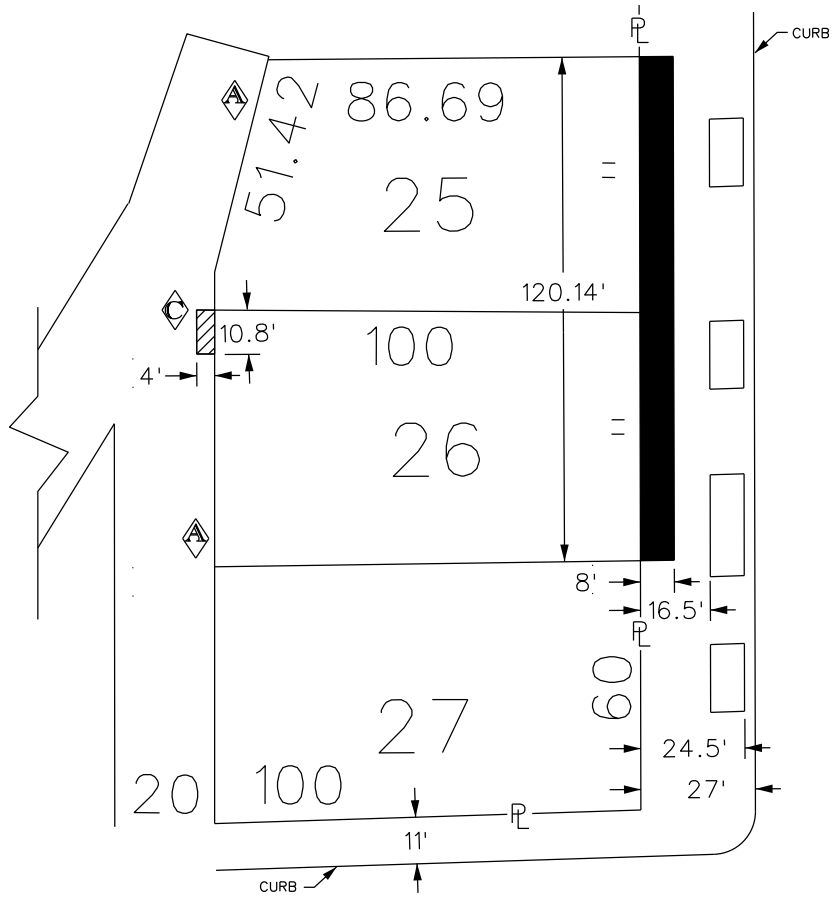
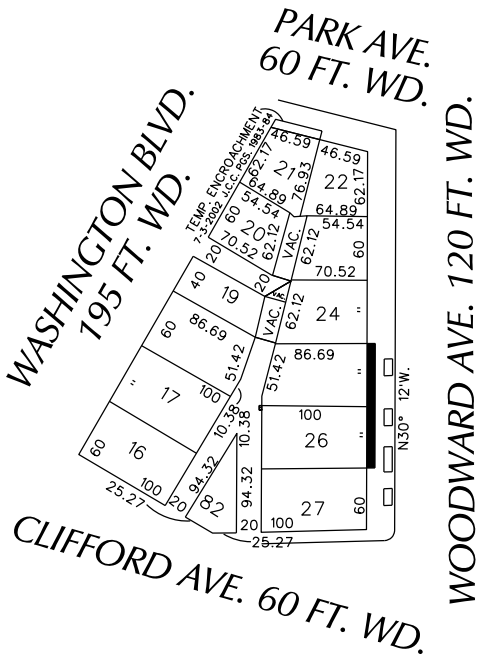


PETITION NO. 1358  
 GIFFELS WEBSTER  
 28 W. ADAMS, SUITE 1200  
 DETROIT, MICHIGAN 48226  
 C/O DEIRDRE CLEIN  
 PHONE NO. 313 962-4442

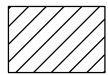


**"REVISED"**



WOODWARD AVE. 120 FT. WD.

CLIFFORD AVE. 60 FT. WD.



- REQUEST ENCROACHMENT  
 (With Underground Vault and Mechanical Venting) Ⓢ



- REQUEST ENCROACHMENT  
 (With Outdoor Seating and Canopies) Ⓢ

C	ADD UNDERGROUND VAULT AND MECHANICAL VENTING	WLW	KSM	KSM	03/26/19
B	CHANGING FROM SEASONAL OUTDOOR SEATING TO OUTDOOR SEATING.	WLW	KSM	KSM	03/13/19
A	REMOVING REQUEST ENCROACHMENT (With Canopies)	WLW	KSM	KSM	10/25/18
<b>REVISIONS</b>		<b>DRWN</b>	<b>CHKD</b>	<b>APPD</b>	<b>DATE</b>
<b>DRAWN BY</b>	WLW	<b>CHECKED</b>		KSM	
<b>DATE</b>	01-25-17	<b>APPROVED</b>			

(FOR OFFICE USE ONLY)

CARTO 28 B

**REQUEST ENCROACHMENT  
 INTO WOODWARD  
 AT 1515 - 1525 WOODWARD AVE.  
 (With Outdoor Seating, Canopies,  
 Underground Vault and Mechanical Venting)**

<b>CITY OF DETROIT    CITY ENGINEERING DEPARTMENT    SURVEY BUREAU</b>	
<b>JOB NO.</b>	01-01
<b>DRWG. NO.</b>	X 1358